

WEIPU® 2026



 **WEIPU® Connector**
Smart Connection Provider

 **B.C.E.**
ELECTRONICS

**WATERPROOF
CONNECTOR**

B.C.E. S.r.l. - Via Regina Pacis, 54/c - Sassuolo (MO) - I 41049 - Italy
Tel.: 0536 811616 - Fax: 0536 811500 - Web: www.bce.it - E-mail: bce@bce.it

About WEIPU

With nearly 30 years of experience, WEIPU provides comprehensive connector products and services, developing connecting solutions adapted to international markets and customers.

Our expertise: We have been on the front lines helping to shape the future of the development of industries. Our products enhance connectivity comfort, safety, and efficiency. The connectors we produce, whose high performance is the result of nearly 30 years of constant innovation, literally act as a link at the heart of the industry.

Our mission: As Industry 4.0 and IoT adoption continues to grow, providing smart connectivity has become a priority for many connector manufacturers. Smart connectivity is becoming a must for many industries to make possible more robust data transmission and reliable performance in critical services and emerging applications. With comprehensive connecting solutions and innovative capability, WEIPU is helping transform traditional technology into smart infrastructures.

Our purpose: We make connectivity solutions connect whether on data, power, or signal connection- across a variety of industries such as renewable energy systems, LED lighting, test & measurement, battery energy storage systems, communications, defense, security, and transportation, etc.

Efficiency & Quality

Termination Solder, Crimp, Screw PC Tail Options	Pin Option From 1-pin to 61-pin Options	Robust Power (up to 150A), Signal, Data, and Hybrid Connection
IP rating IP44 to IP68 Outdoor & Indoor Use	Coupling Thread, Push-pull, Push-lock, Bayonet Options	Custom Service Cable assembly, PC Tail pin, Shielding, Seal potting



Core Style Overview

Straight Cable Plug



Angled Cable Plug



USB3.0/LC/HDMI/RJ45 Plug



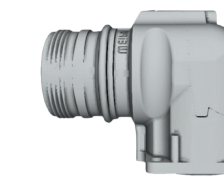
Straight Cable Receptacle



Angled Cable Receptacle



Angled Square Flange Receptacle



USB3.0/LC/HDMI/RJ45 Receptacle



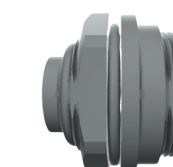
Square Flange Receptacle



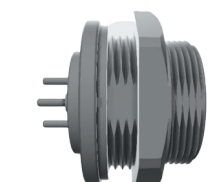
Two-hole Flange Receptacle



Rear-nut Receptacle



Front-nut Receptacle



Applications

Our customers have trusted us in interconnect projects for 30 years and, together with our team of experienced application specialists have turned their first ideas and complex projects into functioning solutions.

WEIPU is active in the fields of application:

- Renewable Energy
- Energy Storage
- E-mobility
- Lighting
- Robotics & Automation
- Test & Measurement
- Agriculture
- Security
- Traffic Engineering
- Railway Technology
- Medical Technology
- Mechanical Engineering
- Heavy Equipment
- Consumer



*Space and Weight-Saving,
High-Performance
Connectivity*



Contents

- 01 Threaded Coupling**
- 02 Bayonet Coupling**
- 03 Push-Pull/Push-lock Coupling**
- 04 Hybrid Connectors**
- 05 Data Connectors**
- 06 High Precision Connectors**
- 07 High Current Connectors**
- 08 Overmolded Connectors**
- 09 Customized Service**
- 10 Accessories**
- 11 Heavy Duty & CEE Connectors**



**New production plants & office buildings
built in 2016
Guangdong | China**



Threaded Coupling



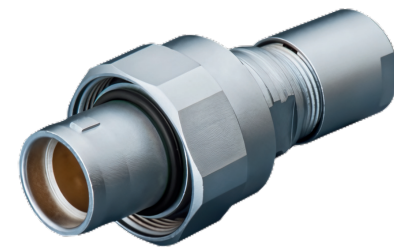
IP68



SP series



- Shell Material: PC, Nylon66
- Size: SP11-SP29
- Pin Options: 1-35
- Termination: Solder/Crimp/Screw
- Up to 60A, 500V
- Color options: Blue/ Custom color
- Temperature range: -40°C~+85°C
- Mating Cycle: 500 times
- CE / RoHS/ UL approval



High Precision - W series

- Shell Material: Brass with chrome plating
- Temperature range: -20°C~+200°C
- Mating Cycle: >1000 times
- Insulation resistance: $\geq 100M\Omega$
- Shielding efficiency: at 10MHz >95dB/at 1GHz >80dB
- Salt spray test: >144hrs
- **Resistance to hydrostatic pressure (mated): ~30bars**

IP67



M23X series

- Shell Material: Zinc alloy with nickel plating
- Type: Power/Signal
- Pin Options: 6&8 (Power); 9-19 (Signal)
- Termination: Crimp
- Up to 28A, 600V (Power); 20A, 300V (Signal)
- Temperature range: -40°C~ +125°C
- Mating Cycle: 1000 times
- CE / RoHS



WA22 series

- Shell Material: Nylon66
- Pin Options: 3+PE & 6+PE
- Termination: Screw/Solder
- 16A, 400V ; 10A, 250V
- Temperature range: -40°C~+85°C
- Mating Cycle: 500 times
- CE / RoHS approval



ST12 series

- Shell Material: Zinc alloy with nickel plating
- Pin Options: 2-9
- Termination: Solder
- Up to 13A, 250V
- Temperature range: -40°C~+85°C
- Mating Cycle: 500 times
- CE / RoHS approval



M12 series Pre-molded cable assembly

- Shell Material: Brass with chrome plating
- Pin Options: 3-12
- Termination: Solder
- Up to 4A, 250V
- Temperature range: -25°C~+85°C
- Mating Cycle: ≥ 100 times
- CE / RoHS approval

IP66-IP67



WL52 series

- Shell Material: Anodized aluminum
- Pin Options: 19
- Termination: Solder
- Up to 25A, 500V
- Color options: Black (standard)/ Blue/Green/Orange/Purple/Red/Yellow
- Temperature range: -40°C~+85°C
- Mating Cycle: 500 times
- CE / RoHS approval

IP55-IP67



WF series

- Shell Material: Zinc alloy with chrome plating
- Size: WF16-WF55
- Pin Options: 1-61
- Termination: Solder/Crimp/Screw
- Up to 150A, 500V
- Temperature range: -40°C~+85°C
- Mating Cycle: 500 times
- CE / RoHS approval

IP55-IP65



WD28 series

- Shell Material: Zinc alloy with nickel plating
- Pin Options: 4 & 15
- Termination: Solder
- Up to 50A, 500V
- Temperature range: -40°C~+85°C
- Mating Cycle: 500 times
- CE / RoHS approval

Indoor Use



WS series

- Shell Material: Zinc alloy with chrome plating
- Size: WS16-WS55
- Pin Options: 1-61
- Termination: Solder/Crimp/Screw
- Up to 150A, 500V
- Temperature range: -40°C~+85°C
- Mating Cycle: 500 times
- CE / RoHS approval



WB series

- Shell Material: Zinc alloy with chrome plating
- Size: WB25 & WB30
- Pin Options: 4&7
- Termination: Solder
- Up to 30A, 500V
- Temperature range: -40°C~+85°C
- Mating Cycle: 500 times
- CE / RoHS approval

Bayonet Coupling

IP67



SY series

- Shell Material: PC, Nylon66
- Size: SY11-SY29
- Pin Options: 1-35
- Termination: Solder/Crimp/Screw
- Up to 60A, 500V
- Color options: Blue/ Custom Color
- Temperature range: -40°C~+85°C
- Mating Cycle: 500 times
- CE / RoHS/ UL approval



SY25 Data series

- Shell Material: PC, Nylon66
- USB3.0/LC/HDMI2.0/RJ45
- Ethernet Class E/Cat 5 (10-100Mbps); Class E/Cat 6 (100-1000Mbps)
- Temperature range: -20°C~+70°C
- Mating Cycle: 1500 times(USB3.0); 1000 times (LC); 500 times (HDMI2.0/RJ45)
- CE / RoHS approval



WY12 series

- Shell Material: Zinc alloy with chrome plating
- Pin Options: 2-9
- Termination: Solder
- Up to 13A, 250V
- Temperature range: -40°C~+85°C
- Mating Cycle: 500 times
- CE / RoHS approval



WY24 Data series

- Shell Material: Zinc alloy with chrome plating
- USB3.0/LC/HDMI2.0/RJ45
- Ethernet Class E/Cat 5 (10-100Mbps); Class E/Cat 6 (100-1000Mbps)
- Temperature range: -20°C~+70°C
- Mating Cycle: 1500 times (USB3.0); 500 times (LC/HDMI2.0/RJ45)
- CE / RoHS approval



RJ45 series

- Shell Material: PC
- Ethernet Cat 6 (100-1000Mbps)
- Temperature range: -40°C~+85°C
- Mating Cycle: 500 times
- CE / RoHS approval

IP65



WAC3 series

- Shell Material: PC, Nylon66
- Up to 20A, 250V
- Termination: Plug: Screw; Socket: 3/16" Flat Tab Terminals
- Temperature range: -40°C~+85°C
- Mating Cycle: 1000 times
- CE / RoHS approval

IP55-IP67



WY series

- Shell Material: Zinc alloy with chrome plating
- Size: WY12-WY55
- Pin Options: 1-61
- Termination: Solder/Crimp/Screw
- Up to 150A, 500V
- Temperature range: -40°C~+85°C
- Mating Cycle: 500 times
- CE / RoHS approval

IP44-IP55



WP20 series

- Shell Material: Nylon66/ Zinc alloy
- Pin Options: 1-15
- Termination: Solder/Screw /Crimp
- Up to 30A, 500V
- Temperature range: -40°C~+85°C
- Mating Cycle: 500 times
- CE / RoHS approval

Indoor Use



WT29 series

- Shell Material: Nylon PA66
- Pin Options: 3 & 5
- Termination: Solder
- Up to 10A, 400V
- Temperature range: -40°C~+85°C
- Mating Cycle: 500 times
- CE / RoHS approval



Push-Pull/Push-lock Coupling

IP67



SF series



- Shell Material: Brass with chrome plating
- Size: SF6-SF20
- Pin Options: 1-15
- Termination: Solder/Crimp/Screw
- Up to 30A, 500V
- Temperature range: -40°C~+85°C
- Mating Cycle: 500 times
- CE / RoHS/ UL approval



SA series



- Shell Material: Anodized aluminum
- Size: SA6-SA28
- Pin Options: 1-35
- Termination: Solder/Crimp/Screw
- Up to 60A, 500V
- Temperature range: -40°C~+85°C
- Mating Cycle: 500 times
- CE / RoHS approval
- Color options: Standard: Black/Silver; Special: Blue/Green/Red



SA24 Data series

- Shell Material: Anodized aluminum
- RJ45/USB3.0/LC/HDMI2.0
- Ethernet Class E/Cat 5 (10-100Mbps); Class E/Cat 6 (100-1000Mbps)
- Temperature range: -20°C~+70°C
- Mating Cycle: 1000 times (USB3.0); 500 times (LC/HDMI2.0/RJ45)
- CE / RoHS approval
- Color options: Standard: Black/Silver; Special: Blue/Green/Red



SF24 Data series

- Shell Material: Brass with chrome plating
- RJ45/USB3.0/LC/HDMI2.0
- Ethernet Class E/Cat 5 (10-100Mbps); Class E/Cat 6 (100-1000Mbps)
- Temperature range: -20°C~+70°C
- Mating Cycle: 500 times
- CE / RoHS approval

Self-latching Connection

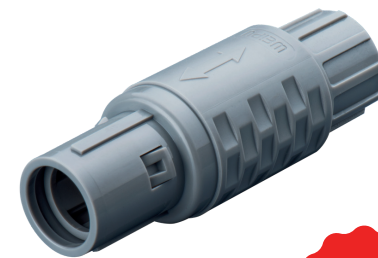
IP50



B series



- Shell Material: Brass with chrome plating
- Temperature range: -55°C~+250°C
- **Mating Cycle: >5000 times**
- Insulation resistance: $\geq 100M\Omega$
- Shielding efficiency: at 10MHz >75dB/at 1GHz >40dB
- Protection: IP50
- Salt spray test: >144hrs



P series



- Shell Material: PSU
- Temperature range: -50°C~+150°C
- Mating Cycle: >1000 times
- Insulation resistance: $\geq 100M\Omega$
- Protection: IP50
- Salt spray test: >144hrs

Push-lock Coupling

IP68



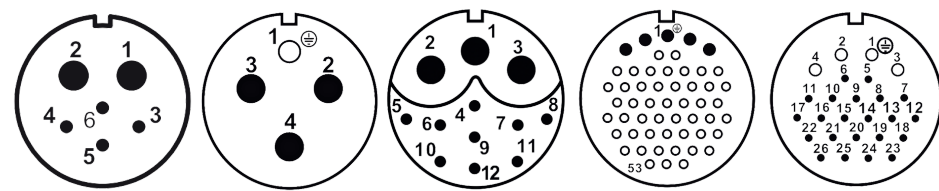
WK series



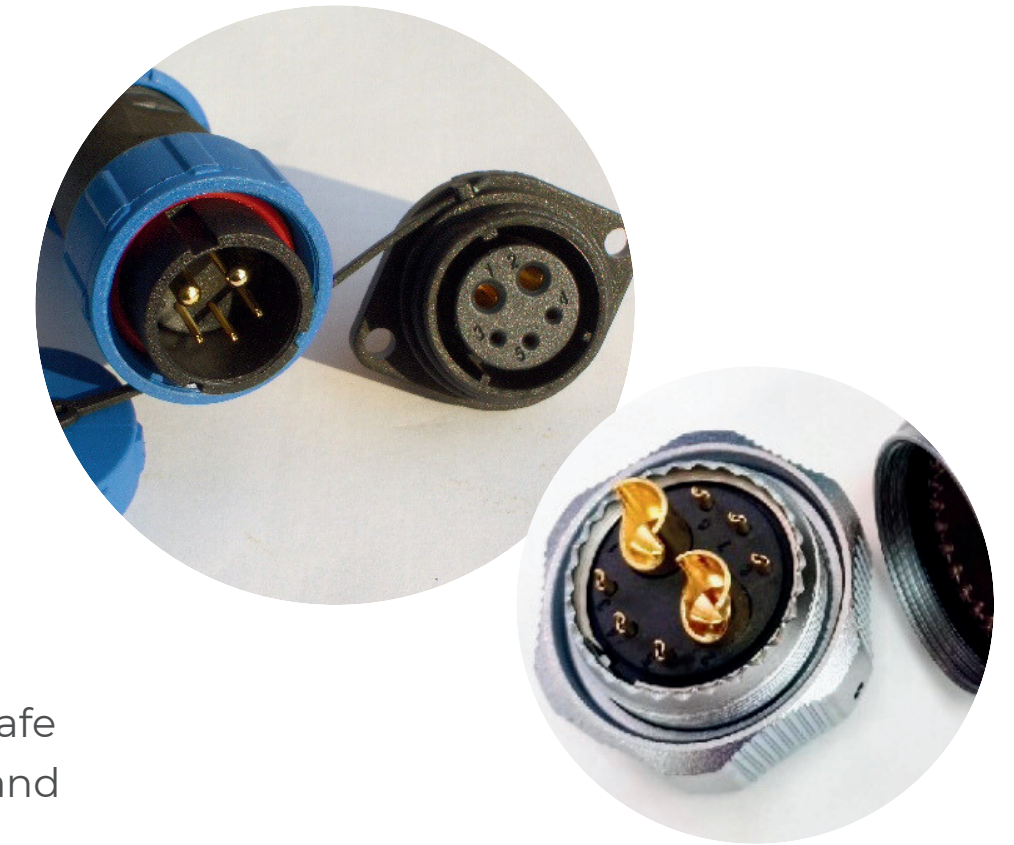
- Shell Material: PPE/Zinc alloy
- Size: WK16-WK28
- Pin Options: 1-35
- Termination: Solder/Crimp/Screw
- Up to 50A, 500V
- Temperature range: -40°C~+105°C
- Mating Cycle: 500 times

Hybrid Connectors

Combine both **Signal** and **Power** in one connection.



WEIPU provides a solution with a design providing up to 150 amps of power while simultaneously delivering high-speed signal transmission.



Reliable Connection

Higher performance with fast signal communication and power connection with up to 150 Amps.

Up to IP68

The high sealing performance secures applications' operation even under hostile environments.

Anti-Vibrating

Bayonet coupling ensures safe locking even in high shock and vibration applications.

Product Line

WEIPU hybrid connectors offer multiple choices. With different terminations (Solder, Crimp, Screw), shell material (Metal, Plastic), IP rating (up to IP68), and 4-pin to 53-pin options, we can best meet different industries' needs.

Metal



SF series



SA series



WS series



WF series



WY series



WD28 series

Plastic



SP series



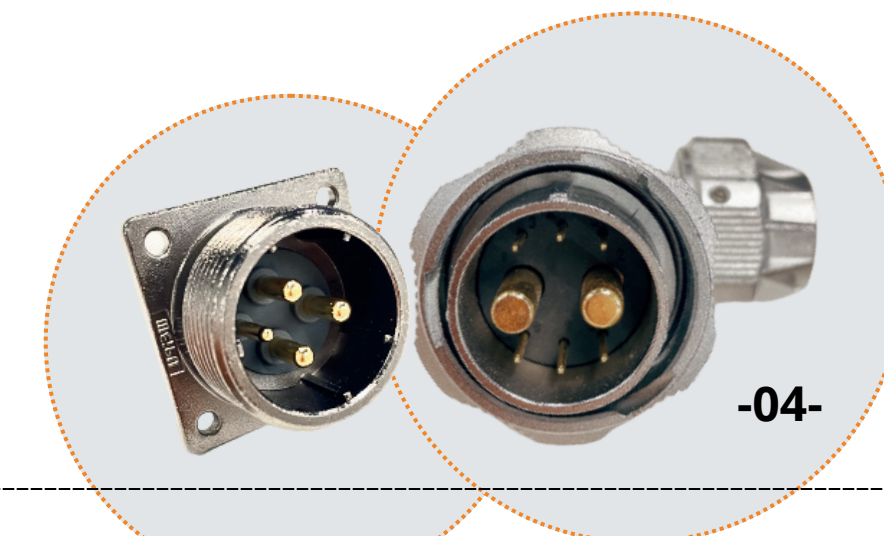
SY series



WP20 series



WK series



Data Connectors

WEIPU Data connectors are designed specifically for USB, LC, HDMI, and RJ45 applications. With up to IP67-rated environmentally sealed function, the connectors provide secure and safe connections in harsh environments.



SA24 series

- Shell Material: Anodized aluminum
- RJ45/USB3.0/LC/HDMI2.0
- Ethernet Class E/Cat 5 (10-100Mbps); Class E/Cat 6 (100-1000Mbps)
- Temperature range: -20°C~+70°C
- Mating Cycle: 1000 times (USB3.0); 500 times (LC/HDMI2.0/RJ45)
- CE / RoHS approval
- Color options: Standard: Black/Silver; Special: Blue/Green/Red



SF24 series

- Shell Material: Brass with chrome plating
- RJ45/USB3.0/LC/HDMI2.0
- Ethernet Class E/Cat 5 (10-100Mbps); Class E/Cat 6 (100-1000Mbps)
- Temperature range: -20°C~+70°C
- Mating Cycle: 500 times
- CE / RoHS approval



WY24 series

- Shell Material: Zinc alloy with chrome plating
- RJ45/USB3.0/LC/HDMI2.0
- Ethernet Class E/Cat 5 (10-100Mbps); Class E/Cat 6 (100-1000Mbps)
- Temperature range: -20°C~+70°C
- Mating Cycle: 1500 times (USB3.0); 500 times (LC/HDMI2.0/RJ45)
- CE / RoHS approval



SY25 series

- Shell Material: PC, Nylon66
- USB3.0/LC/HDMI2.0/RJ45
- Ethernet Class E/Cat 5 (10-100Mbps); Class E/Cat 6 (100-1000Mbps)
- Temperature range: -20°C~+70°C
- Mating Cycle: 1500 times(USB3.0); 1000 times (LC); 500 times (HDMI2.0/RJ45)
- CE / RoHS approval



RJ45 series

- Shell Material: PC
- Ethernet Cat 6 (100-1000Mbps)
- Temperature range: -40°C~+85°C
- Mating Cycle: 500 times
- CE / RoHS approval



High Precision Connectors

WEIPU high-precision connectors are engineered for critical applications in high-end industries, including medical devices, robotics, automation, and aviation. They are designed to deliver precise connections, robust durability, and superior environmental sealing.



NEW!

B series Self-latching

Standard Multi-pin

- Shell Material: Brass with chrome plating
- Temperature range: -55°C~+250°C
- **Mating Cycle: >5000 times**
- Insulation resistance: $\geq 100M\Omega$
- Shielding efficiency:
at 10MHz >75dB/at 1GHz >40dB
- Protection: IP50
- Salt spray test: >144hrs



NEW!

W series Thread

Watertightness

- Shell Material: Brass with chrome plating
- Temperature range: -20°C~+200°C
- Mating Cycle: >1000 times
- Insulation resistance: $\geq 100M\Omega$
- Shielding efficiency:
at 10MHz >95dB/at 1GHz >80dB
- **Protection: IP68**
- Salt spray test: >144hrs
- **Resistance to hydrostatic pressure (mated): ~30bars**



NEW!

P series Self-latching

Fits for Medical use

- Shell Material: PSU
- Temperature range: -50°C~+150°C
- Mating Cycle: >1000 times
- Insulation resistance: $\geq 100M\Omega$
- Protection: IP50
- Salt spray test: >144hrs



High Current Connectors

WEIPU high-current connectors are built for demanding power delivery in harsh environments. Ideal for EV charging infrastructure, battery systems, and industrial power distribution—where safety, durability, and stable performance are critical.



WH800A/WH630A series

- Number of Pins: Single Pole
- Shell Material: PA66+GF
- Contact Material: T2 Copper (Silver Plated)
- Coupling: Bayonet
- Protection: IP67
- Temperature range: -40°C~+85°C
- Mating Cycle: ≥500 times
- Rated voltage: 1000 AC. V
- Compliance: GB/T 11918.1-2014
- Insulation resistance: ≥5000mΩ



WH400A series

- Number of Pins: Single Pole
- Shell Material: PA6, UL94-V0
- Contact Material: Brass with silver plating
- Coupling: Bayonet
- Protection: IP67
- Temperature range: -25°C~+85°C
- Mating Cycle: ≥500 times
- Rated voltage: 1000 AC. V
- Compliance: GB/T 11918.1-2014
- Insulation resistance: ≥5000mΩ



400A series

- Number of Pins: 4&5
- Shell Material: Aluminum alloy with chrome plating
- Contact Material: Copper alloy (nickel-plated, silver-plated)
- Coupling: Straight plug-in
- Protection: IP67
- Temperature range: -40°C~+125°C
- Mating Cycle: ≥125 times
- Rated voltage: 1000 AC. V
- Compliance: GB/T 11918.1; EN 60309-1
- Insulation resistance: ≥5mΩ



200A series

- Number of Pins: 5
- Shell Material: Aluminum alloy, PA+GF
- Contact Material: Brass with silver plating
- Coupling: Push-in
- Protection: IP67
- Temperature range: -25~ + 125°C
- Mating Cycle: ≥500 times
- Rated voltage: 380-415 AC. V
- Compliance: IEC 60309-1; IEC 60309-2



Connectors with Overmolded Cable

WEIPU overmolded connectors provide integrated sealing and strain relief for power, signal, and data cables in harsh outdoor and industrial environments. The overmold reinforces the cable-to-connector joint to reduce failures from bending, pulling, and vibration.



M12 series

- Protection: IP67
- Shell Material: Brass with chrome plating
- Pin Options: 3-12
- 1.5-4A, 30-250V
- Coupling: Thread
- Mating Cycle: ≥100 times



SF series

- Protection: IP67
- Size: SF6-SF24
- Shell Material: Brass with chrome plating
- Pin Options: 2-19
- Up to 30A, 500V
- Coupling: Push-pull
- Mating Cycle: ≥500 times



SA series

- Protection: IP67
- Size: SA6-SA28
- Shell Material: Anodized aluminium
- Pin Options: 2-35
- Up to 60A, 500V
- Coupling: Push-pull
- Mating Cycle: ≥500 times
- Connector Color options: Standard: Black/Silver; Special: Blue/Green/Red



SP series

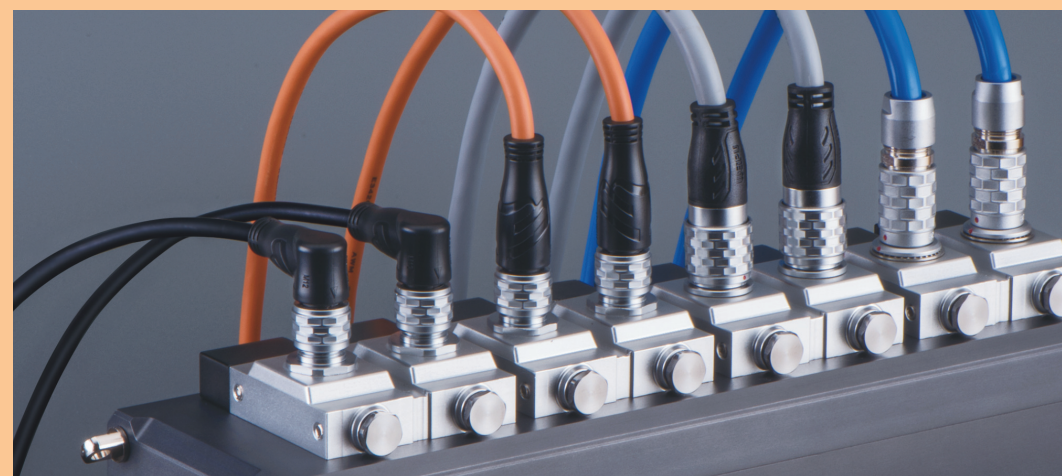
- Protection: IP68
- Size: SP11-SP29
- Shell Material: PC, PA66, Fire resistance: V-0
- Pin Options: 2-35
- Up to 60A, 500V
- Coupling: Thread
- Mating Cycle: ≥500 times
- Connector Color options: Blue / Black color



SY series

- Protection: IP67
- Size: SY11-SY29
- Shell Material: PC, PA66, Fire resistance: V-0
- Pin Options: 2-35
- Up to 60A, 500V
- Coupling: Bayonet
- Mating Cycle: ≥500 times
- Connector Color options: Blue / Black color

✓ We also offer custom cable assemblies across all series.



Customized Service



Cable Assembly & Overmolding

With UL-approved cable harnesses, Weipu is committed to providing reliable customized assembled cable solutions.

- *Cable Assembly:*
All series available
- *Cable Overmolding:*
M12/SF/SA/SP/SY series available



PC Tail Pin

PCB pin can be customized with the size of the PCB pin diameter from Φ 0.6 to Φ 3.



- *SF/SA/ST/SP/SY/WS/WF/WY/WP series are available.*



Multiple-hole entry

This solution gives cost savings and space savings. It answers the need when several cables need to be terminated into one single cord grip.



Custom Color

We offer custom shell color services to meet the demand for different color solutions from industries.

Shielding Circle

To meet the rising need of different industries for shielding functions, WEIPU offers a custom shielding circle with a grounding arrangement.

Potting sealing

- Provide additional strain relief for cables and contacts.
- Seal the rear of the connector against moisture and dust.
- Offer strong shock resistance, impact resistance, and deformation resistance.



Accessories

Cable Gland



Plastic Material



Metal Material



Plastic Accessories



Metal Accessories



Plastic & Metal Hose

Adapter



Junction Box



Crimp Contact Spec & Tool



For Series:
 SA/SF/SP/SY/WP/M23X
 WS/WF/WY/WK

Heavy Duty & CEE Connectors

To offer comprehensive connecting solution to meet different requirements from various industries, we also offer heavy duty and CEE connectors.

Heavy Duty (Rectangular Connector)



Space Saving, Low-maintenance, for Harsh Environments

Inserts:

- UL94 V-0 thermoplastic material
- Terminations: Screw, Crimp, Cage Clamp, Axial Screw

Hoods/Housing:

- Plastic & Metal material
- Up to IP69K protection

Design Standard:

IEC61984, IEC60664-1, IEC60352, IEC60529, EN175301-801

TÜV

CEE connector & Distribution box

Robust Design, High Current & Voltage



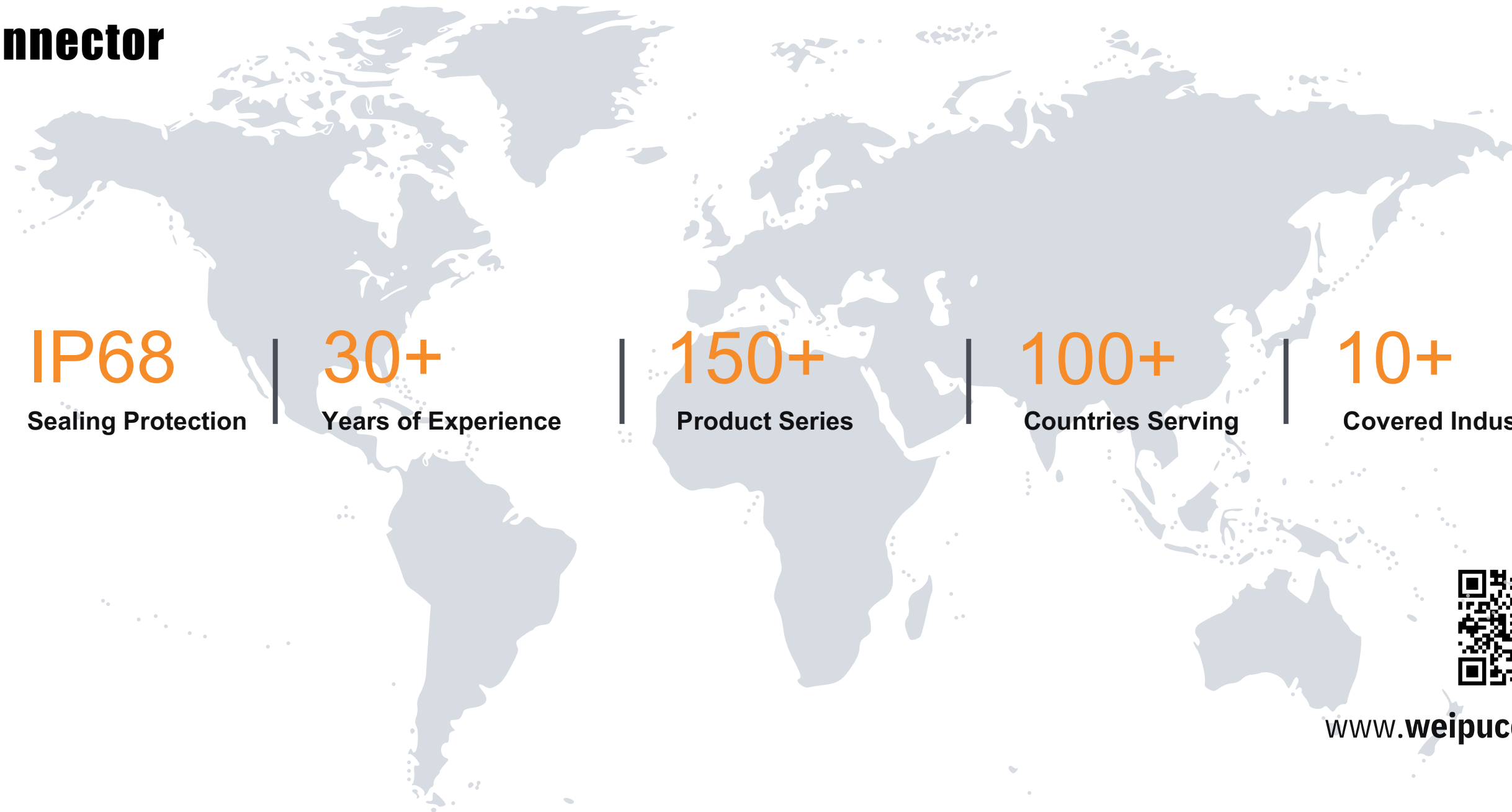
Plug



Socket



Distribution box



IP68

Sealing Protection

30+

Years of Experience

150+

Product Series

100+

Countries Serving

10+

Covered Industries



www.weipuconnector.com

Shanghai, China

info@weipuconnector.com

+86-21-56631111

4th Floor, No.153, Jiang Chang 3rd Road

Shanghai, 200436, China

Italy - Distributor

bce@bce.it

+39-811616

Via Regina Pacis, 54/c

I-Sassuolo (MO) Italy

Production site: Guangdong, China

No. 3, Puling Road, Dayan Industrial Park,

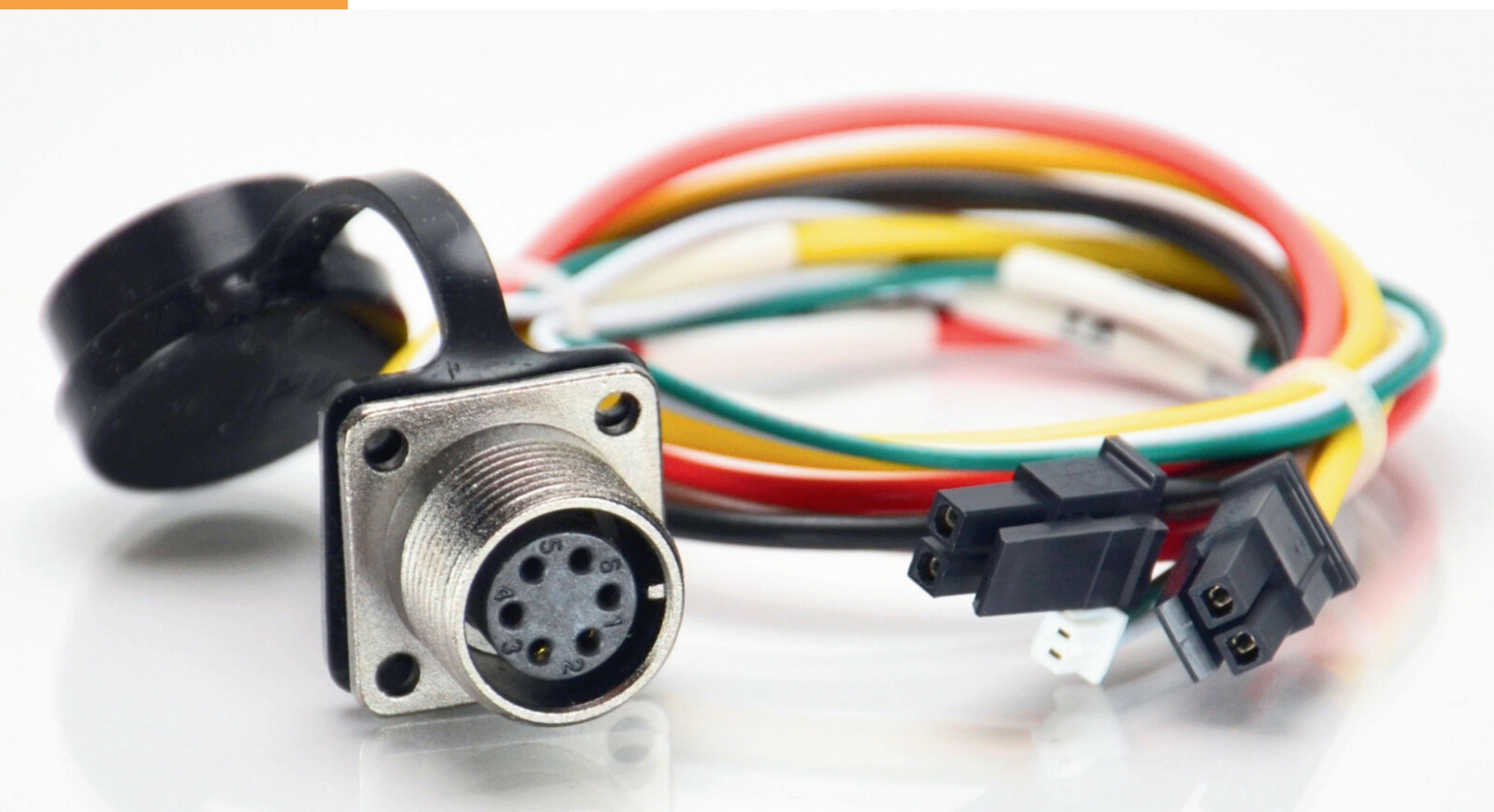
Huangpu Town, Zhongshan City, 528429,

GuangDong Province, China

B.C.E. S.r.l. - Via Regina Pacis, 54/c - Sassuolo (MO) - I 41049 - Italy
Tel.: 0536 811616 - Fax: 0536 811500 - Web: www.bce.it - E-mail: bce@bce.it



***"WEiPU, Smart & Waterproof
Connection Provider"***



B.C.E. s.r.l.
Via Regina Pacis, 54/c - 41049 SASSUOLO (MO) Italy
Tel. +39 0536 811.616 r.a. - Fax +39 0536 811.500
www.bce.it - E-mail: bce@bce.it

