



Cable Assembly for Your Customized System Solution



## Connect to put the new realm of technique

WEIPU was established in 1996, specialize in R&D and manufacturing the industrial connectors , we are the member of “ National Electrical Appliances Standardization Technical Committees ” and one of the members to draft the national standard for industrial connectors GB/T11918.



Factory premises

Workshop building



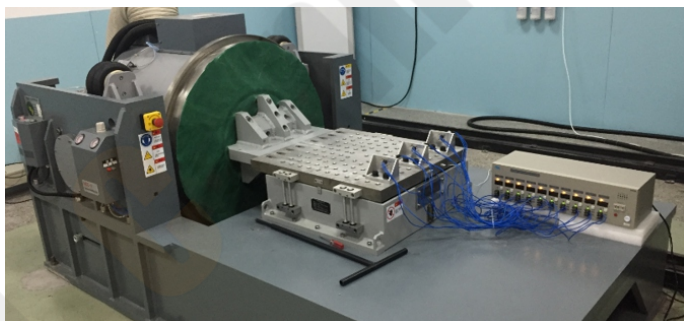
**ISO 9001**

**ISO/TS 22163**

**IATF16949**



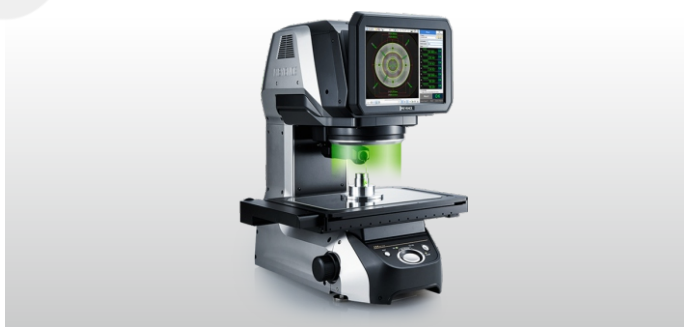
## In-house Test Lab Equipment



• Vibration Test Equipment



• Electric Current Break Test Equipment



• Optical Comparator



• Waterproof Ip Rating Test Chamber

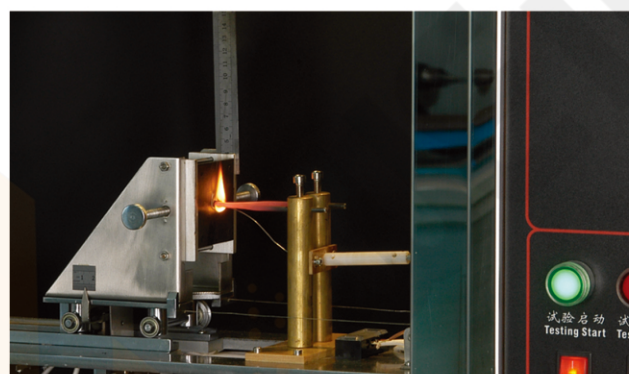


• Mating Cycle Life Time Test Machine



• Accurate Size Test Equipment















Series	Page
SF Series	1 - 14 <a href="#">&lt;CLICK</a>
SP Series	15-24 <a href="#">&lt;CLICK</a>
SY Series	25-34 <a href="#">&lt;CLICK</a>
Product Application	35-42 <a href="#">&lt;CLICK</a>
Custom Case	43-48 <a href="#">&lt;CLICK</a>



## Precasting connector

---



WEIPU provides a full series of SF6-SF20 precast connectors, providing a safe, convenient and fast connection solution for various instruments and power supplies in the industrial field.







★ Each side can be male or female contact

## Material and spec

Product model	Overmold Product
Coupling	Push-pull
Shell material	Brass, PVC fire resistance:UL94 V-0
Insert material	PPS max temperature 260 °C
Contact material	Brass with gold plating
IP rating	IP67
Mating cycle	500
Temperature range	-20°C ~ +85°C
Insulation resistance (MΩ)	2000MΩ

B.C.E. S.r.l. - Via Regina Pacis, 54/c - Sassuolo (MO) - I 41049 - Italy  
 Tel.: 0536 811616 - Fax: 0536 811500 - Web: [www.bce.it](http://www.bce.it) - E-mail: [bce@bce.it](mailto:bce@bce.it)



## SF6 Series

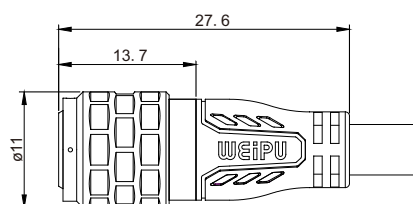


Single-Ended Cordsets--Plug  
Mate with SF621, SF612B, SF615B

SF620/P--

SF620/S--

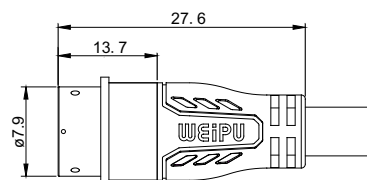
Cable length: 0.5, 1, 1.5, 2, 3m  
Number of contact  
Male contact S Female contact



Single-Ended Cordsets--Receptacle  
Mate with SF620, SF624

SF621/P--

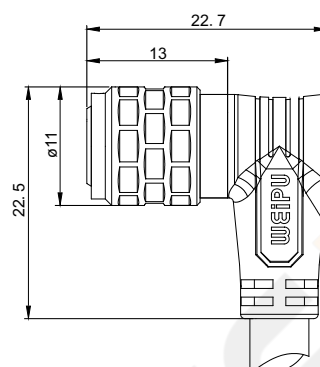
SF621/S--



Single-Ended Cordsets--Plug  
Mate with SF621, SF612B, SF615B

SF624/P--

SF624/S--



## Contact spec

If you need to order other colour and cable length, please contact with our sales representative

Number of contact	2	3	4	5
Male contact face view				
Rated current (A)	0.8	0.8	0.5	0.2
Contact diameter(mm)	$\varnothing 0.6 \times 2$	$\varnothing 0.6 \times 3$	$\varnothing 0.6 \times 4$	$\varnothing 0.6 \times 5$
Rated voltage (AC.V)	30	30	30	30
Test voltage(AC.V) 1 min	500	500	500	500
Contact resistance(m $\Omega$ )	10	10	10	10
Wire size(mm <sup>2</sup> /AWG)	0.2/24	0.2/24	0.12/26	0.05/30



## SF6 Series



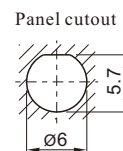
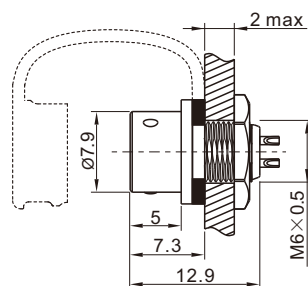
Rear-nut mount  
Mate with SF620, SF624

SF612B/P\_

SF612B/S\_

Male contact

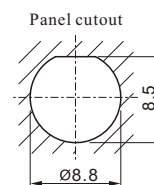
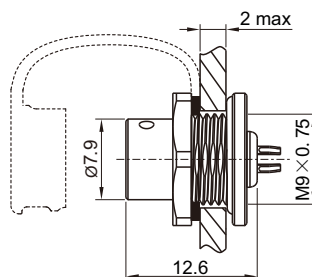
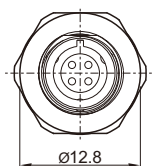
Number of contact  
Female contact



Front-nut mount  
Mate with SF620, SF624

SF615B/P\_

SF615B/S\_



SF620/\_ + SF621/\_

Flexible combination  
P Male contact S Female contact  
Number of contact  
Cable length: 0.5, 1, 1.5, 2, 3m  
Number of contact  
P Male contact S Female contact  
Flexible combination



## SF8 Series

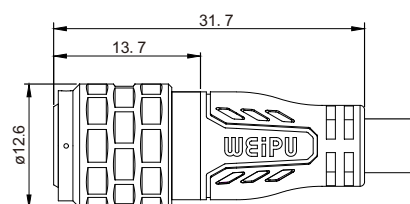


SF820/P--

SF820/S--

Single-Ended Cordsets--Plug  
Mate with SF821, SF812B, SF815B

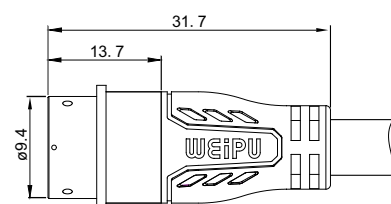
Cable length: 0.5, 1, 1.5, 2, 3m  
Number of contact  
P Male contact S Female contact



SF821/P--

SF821/S--

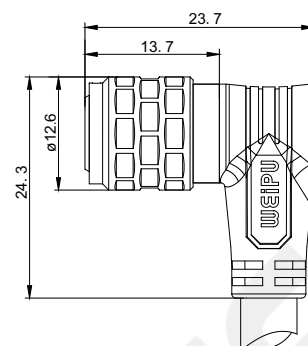
Single-Ended Cordsets--Receptacle  
Mate with SF820, SF824



SF824/P--

SF824/S--

Single-Ended Cordsets--Plug  
Mate with SF821, SF812B, SF815B



## Contact spec

If you need to order other colour and cable length, please contact with our sales representative

Number of contact	2	3	4	6
Male contact face view				
Rated current (A)	2	0.84	0.8	0.2
Contact diameter(mm)	1×2	1×3	0.6×4	0.6×6
Rated voltage (AC.V)	125	125	30	30
Test voltage(AC.V) 1 min	1000	1000	500	500
Contact resistance(mΩ)	5	5	10	10
Wire size(mm²/AWG)	0.3/22	0.2/24	0.2/24	0.05/30



## SF8 Series



**SF812B/P**—

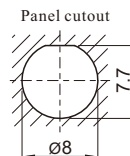
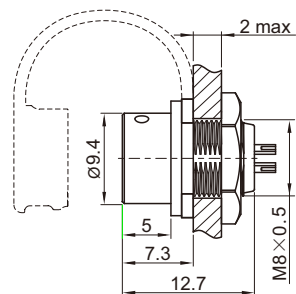
Male contact



**SF812B/S**—

Rear-nut mount  
Mate with SF820, SF824

Number of contact  
Female contact

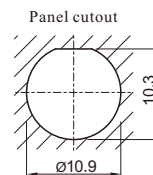
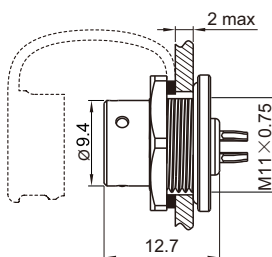
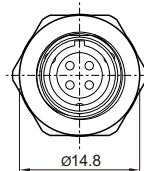


**SF815B/P**—



**SF815B/S**—

Front-nut mount  
Mate with SF820, SF824



**SF820/**— + **SF821/**— —

Flexible combination  
P Male contact S Female contact  
Number of contact

Cable length: 0.5, 1, 1.5, 2, 3m  
Number of contact  
P Male contact S Female contact  
Flexible combination



## SF10 Series

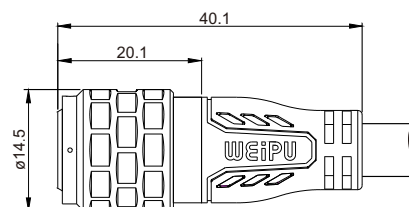


Single-Ended Cordsets--Plug  
Mate with SF1021, SF1012, SF1015

SF1020/P--

SF1020/S--

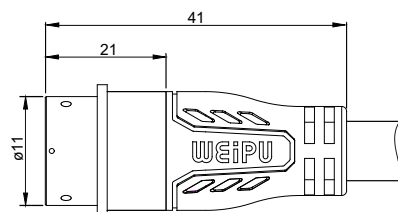
Cable length: 0.5, 1, 1.5, 2, 3m  
Number of contact  
P Male contact S Female contact



Single-Ended Cordsets--Receptacle  
Mate with SF1020, SF1024

SF1021/P--

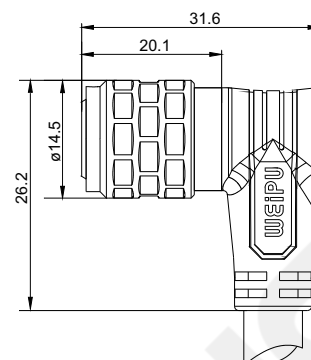
SF1021/S--



Single-Ended Cordsets--Plug  
Mate with SF1021, SF1012, SF1015

SF1024/P--

SF1024/S--



### Contact spec

If you need to order other colour and cable length, please contact with our sales representative

Number of contact	2	3	4	5
Male contact face view				
Rated current (A)	5	3	2	2
Contact diameter(mm)	ø1×2	ø1×3	ø0.7×4	ø0.7×5
Rated voltage (AC.V)	180	180	125	125
Test voltage(AC.V) 1 min	1000	1000	1000	1000
Contact resistance(mΩ)	5	5	10	10
Wire size(mm <sup>2</sup> /AWG)	0.75/18	0.5/20	0.3/22	0.3/22



## SF10 Series



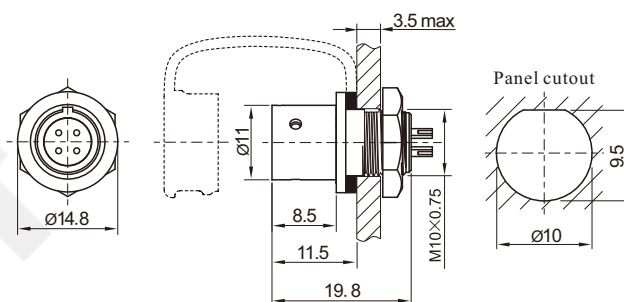
Rear-nut mount  
Mate with SF1020, SF1024

SF1012 / P

SF1012 / S

Male contact

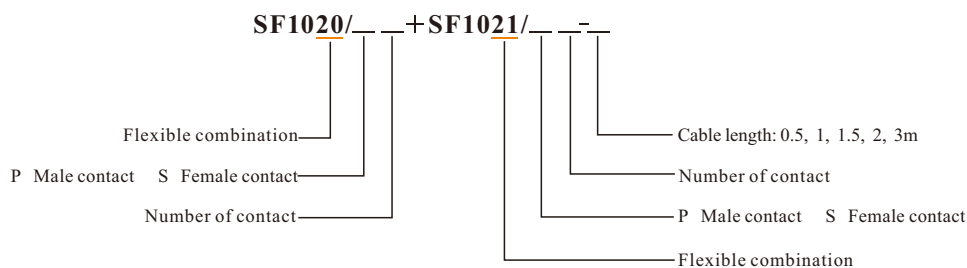
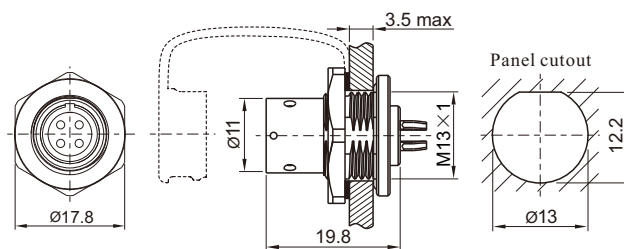
Number of contact  
Female contact



Front-nut mount  
Mate with SF1020, SF1024

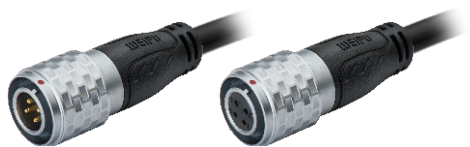
SF1015 / P

SF1015 / S





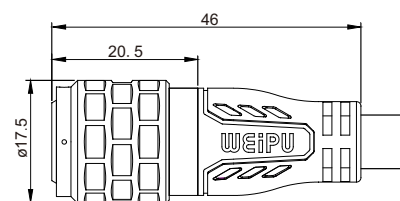
## SF12 Series



Single-Ended Cordsets--Plug  
Mate with SF1221, SF1212, SF1213, SF1215

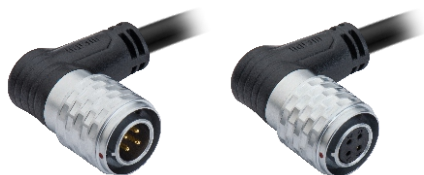
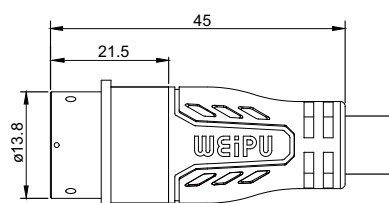
SF1220/P\_\_ SF1220/S\_\_

— Cable length: 0.5, 1, 1.5, 2, 3m  
— Number of contact  
— P Male contact S Female contact



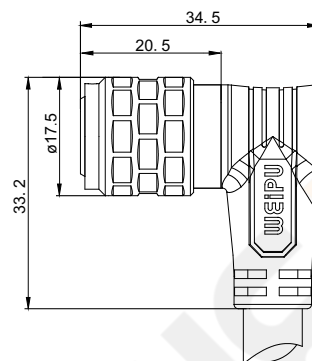
Single-Ended Cordsets--Receptacle  
Mate with SF1220, SF1224

SF1221/P\_\_ SF1221/S\_\_



Single-Ended Cordsets--Plug  
Mate with SF1221, SF1212, SF1213, SF1215

SF1224/P\_\_ SF1224/S\_\_



### Contact spec

If you need to order other colour and cable length, please contact with our sales representative

Number of contact	2	3	4	5	6	7
Male contact face view						
Rated current (A)	10	8	5	3	3	2
Contact diameter(mm)	Ø1.6×2	Ø1.6×3	Ø1×4	Ø1×5	Ø1×6	Ø1×7
Rated voltage (AC.V)	250	250	200	180	125	125
Test voltage(AC.V) 1 min	1500	1500	1500	1000	1000	1000
Contact resistance(mΩ)	2.5	2.5	5	5	5	5
Wire size(mm²/AWG)	1.5/15	1.0/17	0.75/18	0.5/20	0.5/20	0.3/22

## SF12 Series



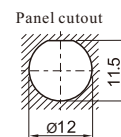
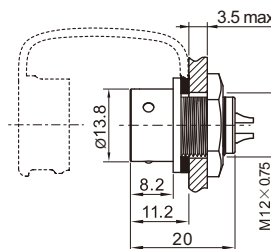
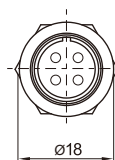
Rear-nut mount  
Mate with SF1220, SF1224

SF1212 / P\_\_

SF1212 / S\_\_

Male contact

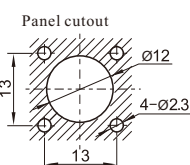
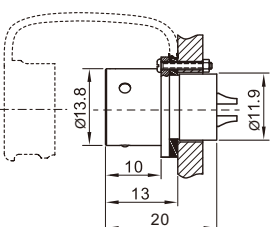
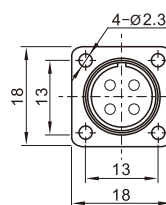
Number of contact  
Female contact



Square flange  
Mate with SF1220, SF1224

SF1213 / P\_\_

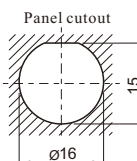
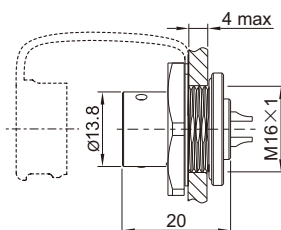
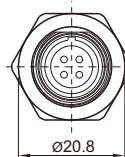
SF1213 / S\_\_



Front-nut mount  
Mate with SF1220, SF1224

SF1215 / P\_\_

SF1215 / S\_\_



SF1220/ + SF1221/ -

Flexible combination  
P Male contact S Female contact  
Number of contact

Cable length: 0.5, 1, 1.5, 2, 3m  
Number of contact  
P Male contact S Female contact  
Flexible combination



## SF16 Series

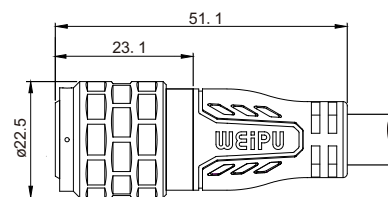


Single-Ended Cordsets--Plug  
Mate with SF1621, SF1612, SF1613, SF1615

SF1620/P--

SF1620/S--

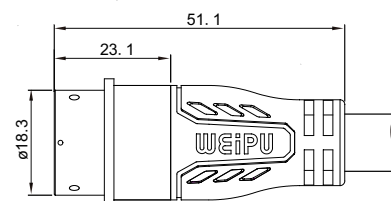
Cable length: 0.5, 1, 1.5, 2, 3m  
Number of contact  
P Male contact S Female contact



Single-Ended Cordsets--Receptacle  
Mate with SF1620, SF1624

SF1621/P--

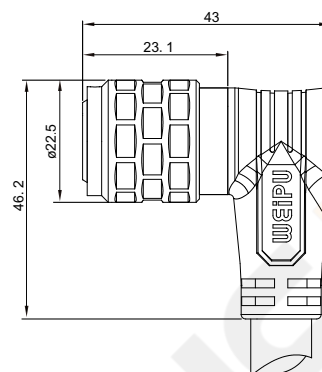
SF1621/S--



Single-Ended Cordsets--Plug  
Mate with SF1621, SF1612, SF1613, SF1615

SF1624/P--

SF1624/S--



### Contact spec

If you need to order other colour and cable length, please contact with our sales representative

Number of contact	2	3	4	2B	3B	4B	5	7	10
Male contact face view									
Rated current (A)	10	10	5	15	15	15	5	5	5
Contact diameter(mm)	Ø1.5×2	Ø1.5×3	Ø1×4	Ø2×2	Ø2×3	Ø2×4	Ø1×5	Ø1×7	Ø1×10
Rated voltage (AC.V)	500	500	500	500	500	500	500	400	400
Test voltage(AC.V) 1 min	1500	1500	1500	1500	1500	1500	1500	1200	1200
Contact resistance (mΩ)	2.5	2.5	5	2.5	2.5	2.5	5	5	5
Wire size (mm <sup>2</sup> /AWG)	1.5/15	1.5/15	0.75/18	2.5/13	2.5/13	2.5/13	0.75/18	0.75/18	0.75/18

## SF16 Series

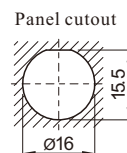
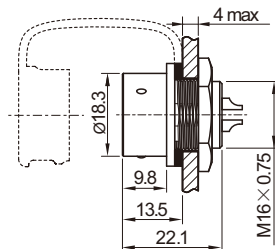
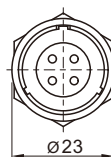


**Rear-nut mount**  
Mate with SF1620, SF1624

SF1612 / P \_ \_ SF1612 / S \_ \_

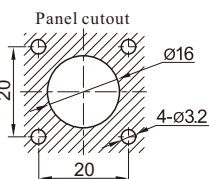
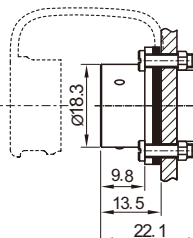
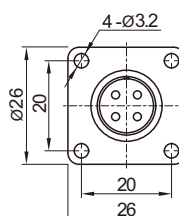
Male contact

1: solder, 3: crimp  
Number of contact  
Female contact



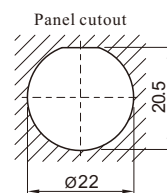
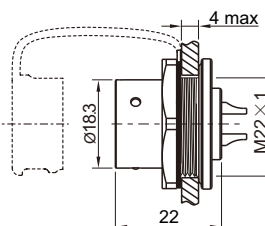
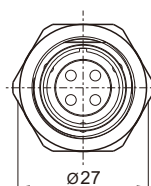
**Square flange**  
Mate with SF1620, SF1624

SF1613 / P \_ \_ SF1613 / S \_ \_



**Front-nut mount**  
Mate with SF1620, SF1624

SF1615 / P \_ \_ SF1615 / S \_ \_



SF1620/ \_ \_ + SF1621/ \_ \_

Flexible combination

P Male contact S Female contact

Number of contact

Cable length: 0.5, 1, 1.5, 2, 3m

Number of contact

P Male contact S Female contact

Flexible combination

B.C.E. S.r.l. - Via Regina Pacis, 54/c - Sassuolo (MO) - I 41049 - Italy  
Tel.: 0536 811616 - Fax: 0536 811500 - Web: [www.bce.it](http://www.bce.it) - E-mail: [bce@bce.it](mailto:bce@bce.it)



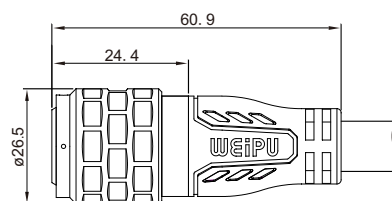
## SF20 Series



Single-Ended Cordsets--Plug  
Mate with SF2021, SF2012, SF2013, SF2015

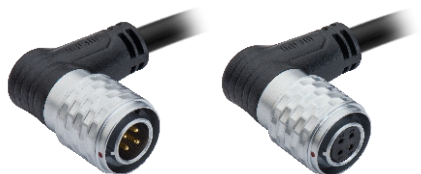
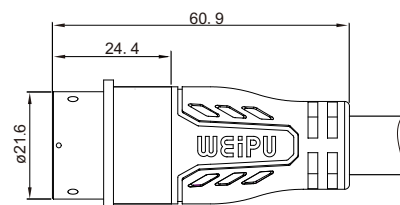
**SF2020/P**\_\_ **SF2020/S**\_\_

— Cable length: 0.5, 1, 1.5, 2, 3m  
— Number of contact  
— P Male contact S Female contact



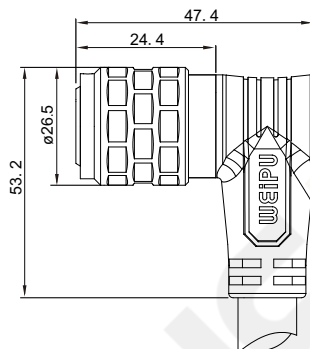
Single-Ended Cordsets--Receptacle  
Mate with SF2020, SF2024

**SF2021/P**\_\_ **SF2021/S**\_\_



Single-Ended Cordsets--Plug  
Mate with SF2021, SF2012, SF2013, SF2015

**SF2024/P**\_\_ **SF2024/S**\_\_



### Contact spec

If you need to order other colour and cable length, please contact with our sales representative

Number of contact	2	3	4	5	7	8	12
Male contact face view							
Rated current (A)	25	25	17	10	10	8	3
Contact diameter(mm)	Ø2.5×2	Ø2.5×3	Ø2.5×4	Ø1.5×5	Ø1.5×7	Ø1.5×8	Ø1×12
Rated voltage (AC.V)	500	500	500	500	500	500	400
Test voltage(AC.V) 1 min	1500	1500	1500	1500	1500	1500	1200
Contact resistance(mΩ)	1	1	1	2.5	2.5	2.5	5
Wire size(mm <sup>2</sup> /AWG)	4/11	4/11	2.5/13	1.5/15	1.5/15	1.0/17	0.5/20

## SF20 Series



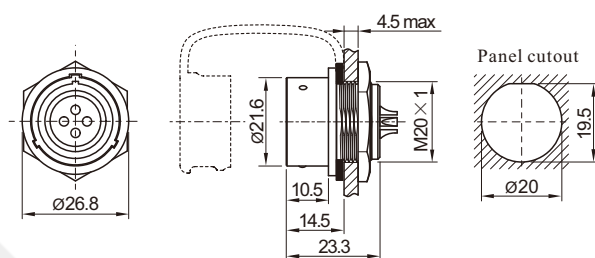
**Rear-nut mount**  
Mate with SF2020, SF2024

SF2012 / P \_ \_

SF2012 / S \_ \_

Male contact

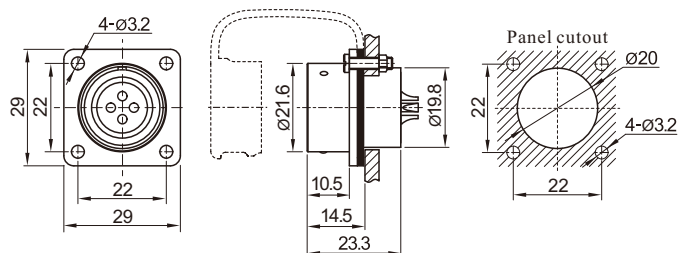
1: solder, 2: screw, 3: crimp  
Number of contact  
Female contact



**Square flange**  
Mate with SF2020, SF2024

SF2013 / P \_ \_

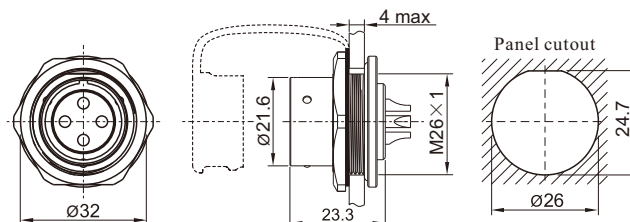
SF2013 / S \_ \_



**Front-nut mount**  
Mate with SF2020, SF2024

SF2015 / P \_ \_

SF2015 / S \_ \_



SF2020/ \_ \_ + SF2021/ \_ \_

Flexible combination

P Male contact S Female contact

Number of contact

Cable length: 0.5, 1, 1.5, 2, 3m

Number of contact

P Male contact S Female contact

Flexible combination

B.C.E. S.r.l. - Via Regina Pacis, 54/c - Sassuolo (MO) - I 41049 - Italy  
Tel.: 0536 811616 - Fax: 0536 811500 - Web: [www.bce.it](http://www.bce.it) - E-mail: [bce@bce.it](mailto:bce@bce.it)



## Precasting connector

---



WEIPU provides a full series of SP11-SP21 precast connectors, providing a safe, convenient and fast connection solution for various instruments and power supplies in the industrial field.

B.C.E. S.r.l. - Via Regina Pacis, 54/c - Sassuolo (MO) - I 41049 - Italy  
Tel.: 0536 811616 - Fax: 0536 811500 - Web: [www.bce.it](http://www.bce.it) - E-mail: [bce@bce.it](mailto:bce@bce.it)



★ Each side can be male or female contact

#### Material and spec

Product model	Overmold Product
Coupling	Threaded
Shell material	PC, Nylon66, PVC fire resistance:UL94 V-0
Insert material	PPS max temperature 260 °C
Contact material	Brass with gold plating
IP rating	IP68
Mating cycle	500
Temperature range	-20°C ~ +85°C
Insulation resistance (MΩ)	2000 MΩ

B.C.E. S.r.l. - Via Regina Pacis, 54/c - Sassuolo (MO) - I 41049 - Italy  
 Tel.: 0536 811616 - Fax: 0536 811500 - Web: [www.bce.it](http://www.bce.it) - E-mail: [bce@bce.it](mailto:bce@bce.it)



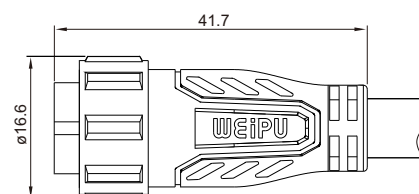
## SP11 Series



Single-Ended Cordsets--Plug  
Mate with SP1121, SP1112

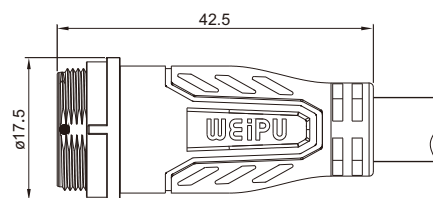
SP1120/P\_\_ SP1120/S\_\_

Cable length: 0.5, 1, 1.5, 2, 3m  
Number of contact  
P Male contact S Female contact



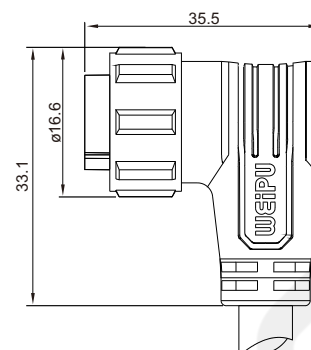
Single-Ended Cordsets--Receptacle  
Mate with SP1120, SP1124

SP1121/P\_\_ SP1121/S\_\_



Single-Ended Cordsets--Plug  
Mate with SP1121, SP1112

SP1124/P\_\_ SP1124/S\_\_



### Contact spec

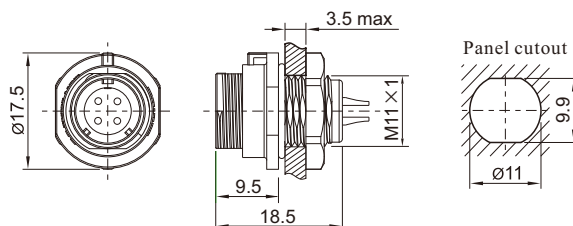
If you need to order other colour and cable length, please contact with our sales representative

Number of contact	2	3	4	5
Male contact face view				
Rated current (A)	5	3	2	2
Contact diameter(mm)	ø1×2	ø1×3	ø0.7×4	ø0.7×5
Rated voltage (AC.V)	180	180	125	125
Test voltage(AC.V) 1 min	1000	1000	1000	1000
Contact resistance(mΩ)	5	5	10	10
Wire size(mm²/AWG)	0.75/18	0.5/20	0.3/22	0.3/22

## SP11 Series



Rear-nut mount  
Mate with SP1120, SP1124



**SP1112 / P**

Male contact

**SP1112 / S**

Number of contact

Female contact



**SP1120/** + **SP1121/** -

Flexible combination

P Male contact S Female contact

Number of contact

Cable length: 0.5, 1, 1.5, 2, 3m

Number of contact

P Male contact S Female contact

Flexible combination



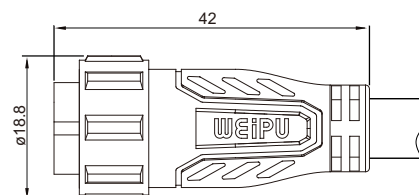
## SP13 Series



Single-Ended Cordsets--Plug  
Mate with SP1321, SP1312, SP1315

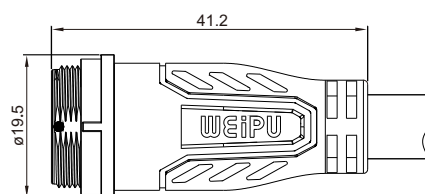
SP1320/P\_\_ SP1320/S\_\_

Cable length: 0.5, 1, 1.5, 2, 3m  
Number of contact  
P Male contact S Female contact



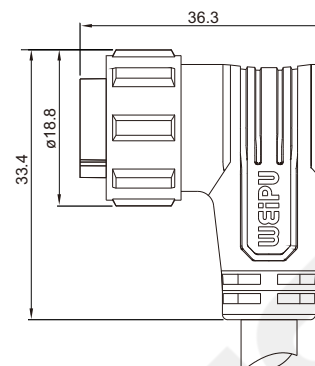
Single-Ended Cordsets--Receptacle  
Mate with SP1320, SP1324

SP1321/P\_\_ SP1321/S\_\_



Single-Ended Cordsets--Plug  
Mate with SP1321, SP1312, SP1315

SP1324/P\_\_ SP1324/S\_\_



## Contact spec

If you need to order other colour and cable length, please contact with our sales representative

Number of contact	2	3	4	5	6	7
Male contact face view						
Rated current (A)	10	8	5	3	3	2
Contact diameter(mm)	Ø1.6×2	Ø1.6×3	Ø1×4	Ø1×5	Ø1×6	Ø1×7
Rated voltage (AC.V)	250	250	200	180	125	125
Test voltage(AC.V) 1 min	1500	1500	1500	1000	1000	1000
Contact resistance(mΩ)	2.5	2.5	5	5	5	5
Wire size(mm <sup>2</sup> /AWG)	1.5/15	1.0/17	0.75/18	0.5/20	0.5/20	0.3/22

## SP13 Series



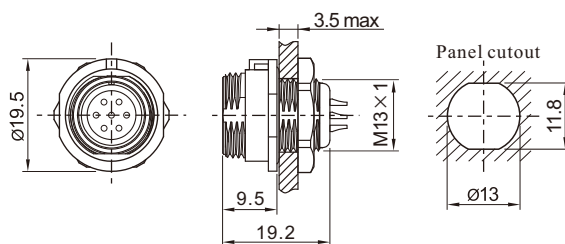
Rear-nut mount  
Mate with SP1320, SP1324

SP1312 / P\_\_

SP1312 / S\_\_

Male contact

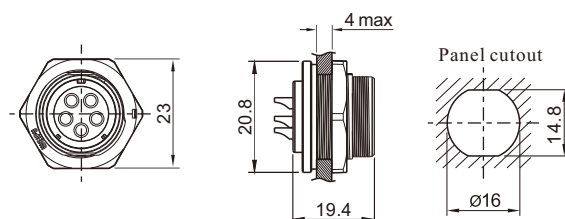
Number of contact  
Female contact



Front-nut mount  
Mate with SP1320, SP1324

SP1315/ P\_\_

SP1315/ S\_\_



SP1320/ + SP1321/ -

Flexible combination

P Male contact S Female contact

Number of contact

Cable length: 0.5, 1, 1.5, 2, 3m

Number of contact

P Male contact S Female contact

Flexible combination

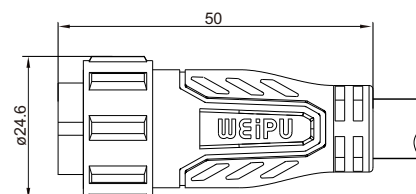
## SP17 Series



Single-Ended Cordsets--Plug  
Mate with SP1721, SP1712

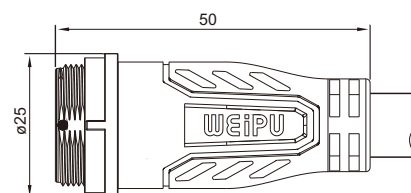
SP1720/P\_\_ SP1720/S\_\_

Cable length: 0.5, 1, 1.5, 2, 3m  
Number of contact  
P Male contact S Female contact



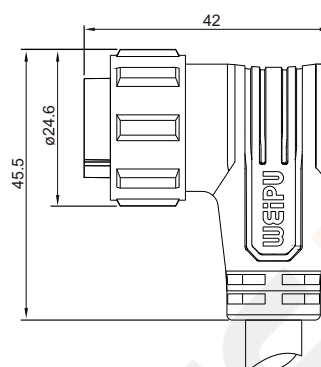
Single-Ended Cordsets--Receptacle  
Mate with SP1720, SP1724

SP1721/P\_\_ SP1721/S\_\_



Single-Ended Cordsets--Plug  
Mate with SP1721, SP1712

SP1724/P\_\_ SP1724/S\_\_



## Contact spec

If you need to order other colour and cable length, please contact with our sales representative

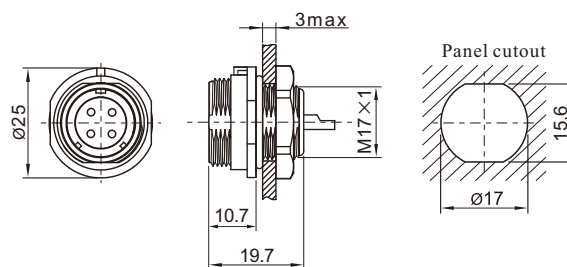
Number of contact	2	3	4	2B	3B	4B	5	7	10
Male contact face view									
Rated current (A)	10	10	5	15	10	10	5	5	5
Contact diameter(mm)	Ø1.5×2	Ø1.5×3	Ø1×4	Ø2×2	Ø2×3	Ø2×4	Ø1×5	Ø1×7	Ø1×10
Rated voltage (AC.V)	500	500	500	500	500	500	500	400	400
Test voltage(AC.V) 1 min	1500	1500	1500	1500	1500	1500	1500	1200	1200
Contact resistance(mΩ)	2.5	2.5	5	2.5	2.5	2.5	5	5	5
Wire size (mm²/AWG)	1.5/15	1.5/15	0.75/18	2.5/13	1.5/15	1.5/15	0.75/18	0.75/18	0.75/18



## SP17 Series



Rear-nut mount  
Mate with SP1720, SP1724



SP1712 / P --

SP1712 / S --

Male contact

1: solder, 3: crimp

Number of contact

Female contact



SP1720/ -- + SP1721/ --

Flexible combination

P Male contact S Female contact

Number of contact

Cable length: 0.5, 1, 1.5, 2, 3m

Number of contact

P Male contact S Female contact

Flexible combination

## SP21 Series

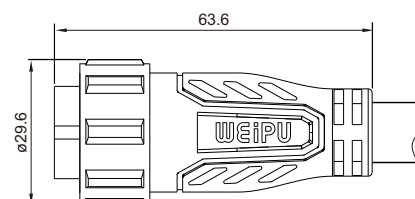


SP2120/P--

SP2120/S--

Single-Ended Cordsets--Plug  
Mate with SP2121, SP2112, SP2113, SP2115

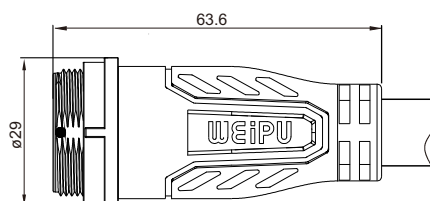
Cable length: 0.5, 1, 1.5, 2, 3m  
Number of contact  
P Male contact S Female contact



SP2121/P--

SP2121/S--

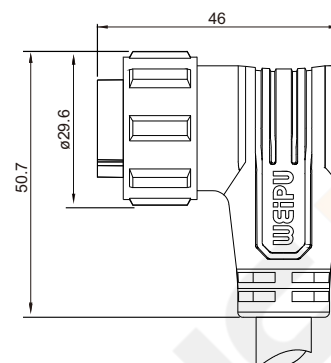
Single-Ended Cordsets--Receptacle  
Mate with SP2120, SP2124



SP2124/P--

SP2124/S--

Single-Ended Cordsets--Plug  
Mate with SP2121, SP2112, SP2113, SP2115



### Contact spec

If you need to order other colour and cable length, please contact with our sales representative

Number of contact	2	3	4	5	7	8	12
Male contact face view							
Rated current (A)	25	25	17	10	10	8	3
Contact diameter(mm)	Ø2.5×2	Ø2.5×3	Ø2.5×4	Ø1.5×5	Ø1.5×7	Ø1.5×8	Ø1×12
Rated voltage (AC.V)	500	500	500	500	500	500	400
Test voltage(AC.V) 1 min	1500	1500	1500	1500	1500	1500	1200
Contact resistance(mΩ)	1	1	1	2.5	2.5	2.5	5
Wire size (mm <sup>2</sup> /AWG)	4/11	4/11	2.5/13	1.5/15	1.5/15	1.0/17	0.5/20

## SP21 Series



Rear-nut mount  
Mate with SP2120, SP2124

SP2112 / P \_ \_

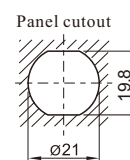
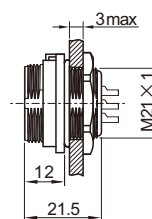
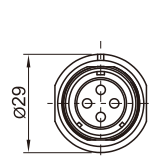
SP2112 / S \_ \_

Male contact

1: solder, 2: screw, 3: crimp

Number of contact

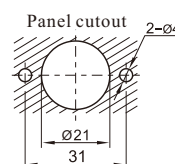
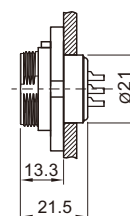
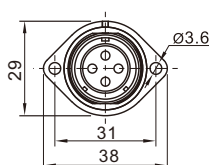
Female contact



2-hole flange  
Mate with SP2120, SP2124

SP2113 / P \_ \_

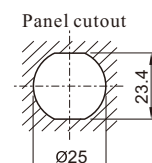
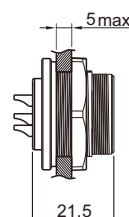
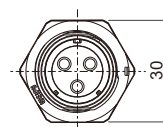
SP2113 / S \_ \_



Front-nut mount  
Mate with SP2120, SP2124

SP2115 / P \_ \_

SP2115 / S \_ \_



SP2120/ \_ \_ + SP2121/ \_ \_

Flexible combination

P Male contact S Female contact

Number of contact

Cable length: 0.5, 1, 1.5, 2, 3m

Number of contact

P Male contact S Female contact

Flexible combination

B.C.E. S.r.l. - Via Regina Pacis, 54/c - Sassuolo (MO) - I 41049 - Italy  
Tel.: 0536 811616 - Fax: 0536 811500 - Web: [www.bce.it](http://www.bce.it) - E-mail: [bce@bce.it](mailto:bce@bce.it)



## Precasting connector

---



WEIPU provides a full series of SY11-SY21 precast connectors, providing a safe, convenient and fast connection solution for various instruments and power supplies in the industrial field.

B.C.E. S.r.l. - Via Regina Pacis, 54/c - Sassuolo (MO) - I 41049 - Italy  
Tel.: 0536 811616 - Fax: 0536 811500 - Web: [www.bce.it](http://www.bce.it) - E-mail: [bce@bce.it](mailto:bce@bce.it)



★ Each side can be male or female contact

## Material and spec

Product model	Overmold Product
Coupling	Bayonet
Shell material	PC, Nylon66, PVC fire resistance:UL94 V-0
Insert material	PPS max temperature 260 °C
Contact material	Brass with gold plating
IP rating	IP67
Mating cycle	500
Temperature range	-20°C ~ +85°C
Insulation resistance (MΩ)	2000MΩ

B.C.E. S.r.l. - Via Regina Pacis, 54/c - Sassuolo (MO) - I 41049 - Italy  
 Tel.: 0536 811616 - Fax: 0536 811500 - Web: [www.bce.it](http://www.bce.it) - E-mail: [bce@bce.it](mailto:bce@bce.it)

## SY11 Series

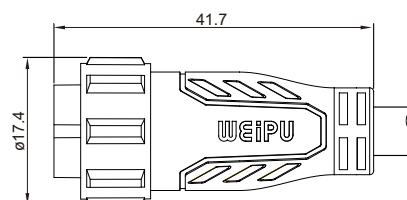


Single-Ended Cordsets--Plug  
Mate with SY1121, SY1112

SY1120/P--

SY1120/S--

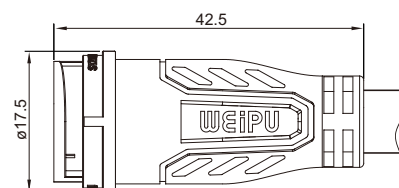
Cable length: 0.5, 1, 1.5, 2, 3m  
Number of contact  
P Male contact S Female contact



Single-Ended Cordsets--Receptacle  
Mate with SY1120, SY1124

SY1121/P--

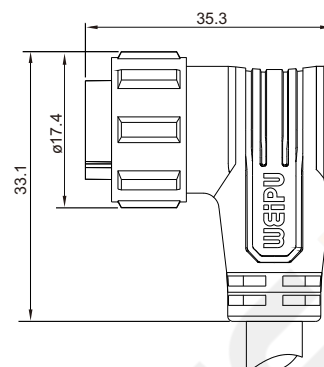
SY1121/S--



Single-Ended Cordsets--Plug  
Mate with SY1121, SY1112

SY1124/P--

SY1124/S--



## Contact spec

If you need to order other colour and cable length, please contact with our sales representative

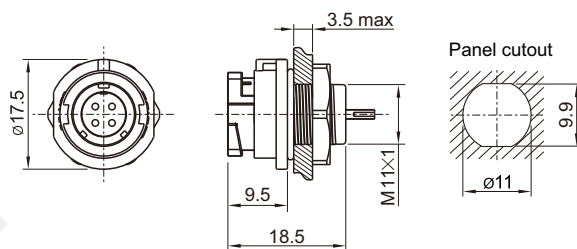
Number of contact	2	3	4	5
Male contact face view				
Rated current (A)	5	3	2	2
Contact diameter(mm)	Ø1×2	Ø1×3	Ø0.7×4	Ø0.7×5
Rated voltage (AC.V)	180	180	125	125
Test voltage(AC.V) 1 min	1000	1000	1000	1000
Contact resistance(mΩ)	5	5	10	10
Wire size(mm²/AWG)	0.75/18	0.5/20	0.3/22	0.3/22



## SY11 Series



Rear-nut mount  
Mate with SY1120, SY1124



**SY1112 / P**

Male contact

**SY1112 / S**

Number of contact  
Female contact



**SY1120/** — **+SY1121/** — —

Flexible combination

P Male contact S Female contact

Number of contact

Cable length: 0.5, 1, 1.5, 2, 3m

Number of contact

P Male contact S Female contact

Flexible combination

## SY13 Series

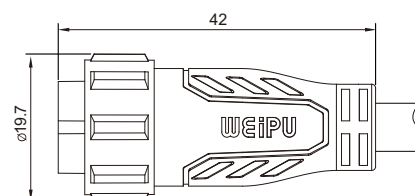


Single-Ended Cordsets--Plug  
Mate with SY1321, SY1312

SY1320/P--

SY1320/S--

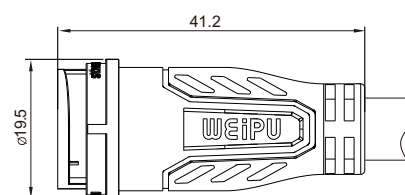
Cable length: 0.5, 1, 1.5, 2, 3m  
Number of contact  
P Male contact S Female contact



Single-Ended Cordsets--Receptacle  
Mate with SY1320, SY1324

SY1321/P--

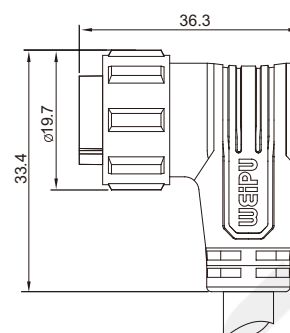
SY1321/S--



Single-Ended Cordsets--Plug  
Mate with SY1321, SY1312

SY1324/P--

SY1324/S--



## Contact spec

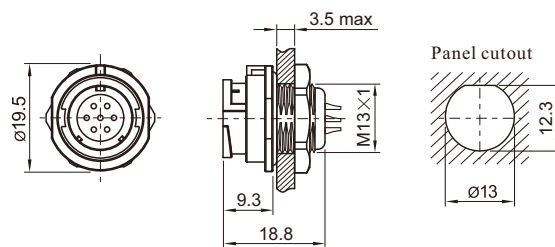
If you need to order other colour and cable length, please contact with our sales representative

Number of contact	2	3	4	5	6	7
Male contact face view						
Rated current (A)	10	8	5	3	3	2
Contact diameter(mm)	Ø1.6×2	Ø1.6×3	Ø1×4	Ø1×5	Ø1×6	Ø1×7
Rated voltage (AC.V)	250	250	200	180	125	125
Test voltage(AC.V) 1 min	1500	1500	1500	1000	1000	1000
Contact resistance(mΩ)	2.5	2.5	5	5	5	5
Wire size(mm <sup>2</sup> /AWG)	1.5/15	1.0/17	0.75/18	0.5/20	0.5/20	0.3/22

## SY13 Series



Rear-nut mount  
Mate with SY1320, SY1324



**SY1312 / P**

Male contact

**SY1312 / S**

Number of contact  
Female contact



**SY1320/** + **SY1321/** -

Flexible combination  
P Male contact S Female contact  
Number of contact  
Cable length: 0.5, 1, 1.5, 2, 3m  
Number of contact  
P Male contact S Female contact  
Flexible combination



## SY17 Series

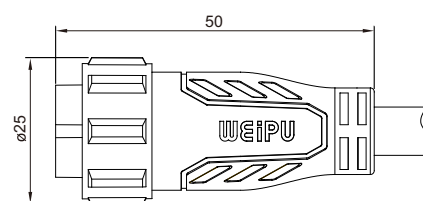


Single-Ended Cordsets--Plug  
Mate with SY1721, SY1712

SY1720/P--

SY1720/S--

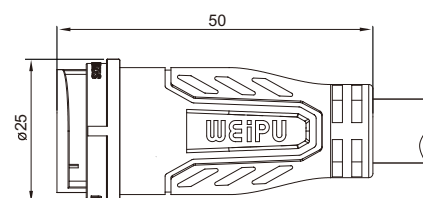
Cable length: 0.5, 1, 1.5, 2, 3m  
Number of contact  
P Male contact S Female contact



Single-Ended Cordsets--Receptacle  
Mate with SY1720, SY1724

SY1721/P--

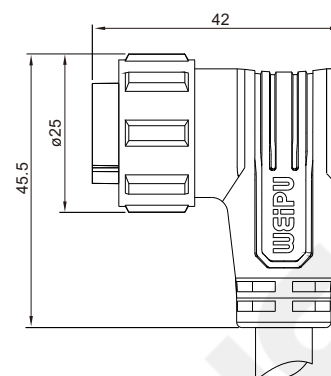
SY1721/S--



Single-Ended Cordsets--Plug  
Mate with SY1721, SY1712

SY1724/P--

SY1724/S--



## Contact spec

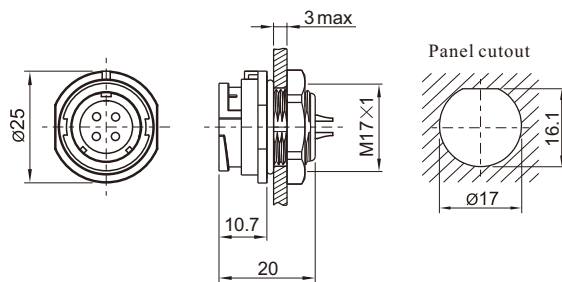
If you need to order other colour and cable length, please contact with our sales representative

Number of contact	2	3	4	2B	3B	4B	5	7	10
Male contact face view									
Rated current (A)	10	10	5	15	10	10	5	5	5
Contact diameter(mm)	ø1.5×2	ø1.5×3	ø1×4	ø2×2	ø2×3	ø2×4	ø1×5	ø1×7	ø1×10
Rated voltage (AC.V)	500	500	500	500	500	500	500	400	400
Test voltage(AC.V) 1 min	1500	1500	1500	1500	1500	1500	1500	1200	1200
Contact resistance(mΩ)	2.5	2.5	5	2.5	2.5	2.5	5	5	5
Wire size (mm²/AWG)	1.5/15	1.5/15	0.75/18	2.5/13	1.5/15	1.5/15	0.75/18	0.75/18	0.75/18

## SY17 Series



Rear-nut mount  
Mate with SY1720, SY1724



**SY1712 / P** - -

Male contact

**SY1712 / S** - -

1: solder, 3: crimp

Number of contact

Female contact



**SY1720/** - - + **SY1721/** - -

Flexible combination

P Male contact S Female contact

Number of contact

Cable length: 0.5, 1, 1.5, 2, 3m

Number of contact

P Male contact S Female contact

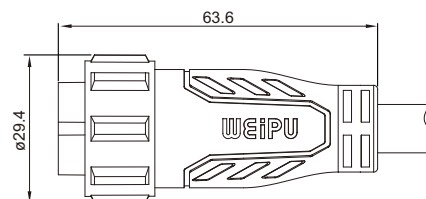
Flexible combination

## SY21 Series

Single-Ended Cordsets--Plug  
Mate with SY2121, SY2112, SY2113

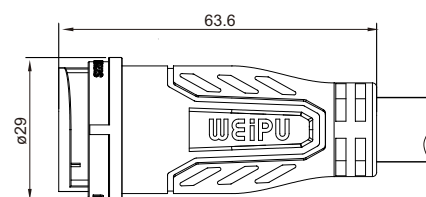
SY2120/P--

SY2120/S--

Cable length: 0.5, 1, 1.5, 2, 3m  
Number of contact  
P Male contact S Female contactSingle-Ended Cordsets--Receptacle  
Mate with SY2120, SY2124

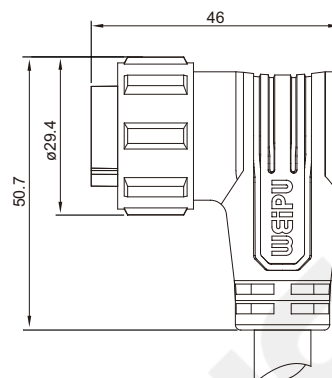
SY2121/P--

SY2121/S--

Single-Ended Cordsets--Plug  
Mate with SY2121, SY2112, SY2113

SY2124/P--

SY2124/S--



## Contact spec

If you need to order other colour and cable length, please contact with our sales representative

Number of contact	2	3	4	5	7	8	12
Male contact face view							
Rated current (A)	25	25	17	10	10	8	3
Contact diameter(mm)	Ø2.5×2	Ø2.5×3	Ø2.5×4	Ø1.5×5	Ø1.5×7	Ø1.5×8	Ø1×12
Rated voltage (AC.V)	500	500	500	500	500	500	400
Test voltage(AC.V) 1 min	1500	1500	1500	1500	1500	1500	1200
Contact resistance(mΩ)	1	1	1	2.5	2.5	2.5	5
Wire size (mm²/AWG)	4/11	4/11	2.5/13	1.5/15	1.5/15	1.0/17	0.5/20



## SY21 Series



**Rear-nut mount**  
Mate with SY2120, SY2124

SY2112 / P \_ \_

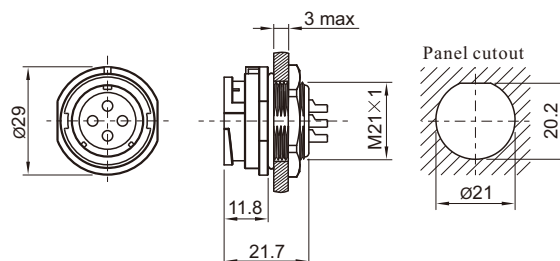
SY2112 / S \_ \_

Male contact

1: solder, 2: screw, 3: crimp

Number of contact

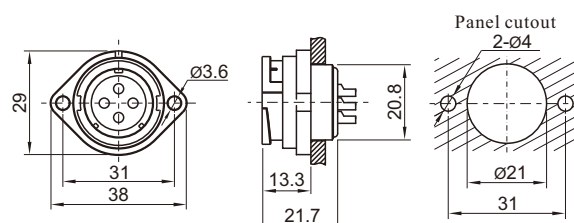
Female contact



**2-hole flange**  
Mate with SY2120, SY2124

SY2113 / P \_ \_

SY2113 / S \_ \_



SY2120/ \_ \_ + SY2121/ \_ \_

Flexible combination

P Male contact S Female contact

Number of contact

Cable length: 0.5, 1, 1.5, 2, 3m

Number of contact

P Male contact S Female contact

Flexible combination

Weipu provides various professional customized solution



WEIPU studies the characteristics of each industry carefully, and designs, develops and produces more specialized connectors according to the special needs of users, and dedicateds in helping users to optimize design solutions, lower costs, and make the entire connection system more Safe, Reliable, Stable and Fast. The use of connectors for power supply enables the production line to expand and innovate more flexibly. In addition, convenience, speed and exquisite appearance are also the ideal choice for many users.



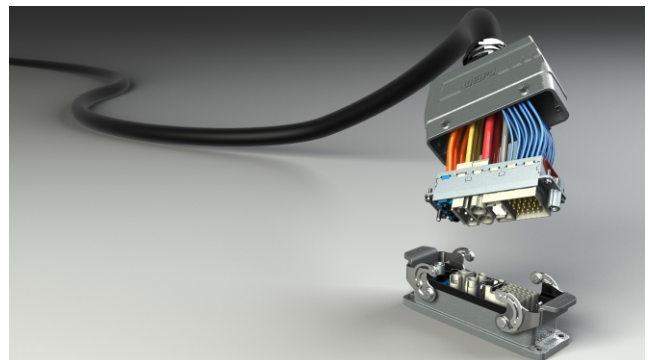
Provide diverse and reliable connector



Industrial Connector



Circular Connector



Heavy Duty Connector



Precision push pull self-locking connector



Waterproof cable gland



## Industrial transmission



Modern mass production pursues zero downtime of the production line, which requires that the motor can be replaced in a very short time once failure occurs. WEIPU connector can easily connect and disconnect the motor, thus ensuring high production rate. WEIPU has a variety of connectors, which can power a variety of electric motors, servomotors and other electrical equipment.

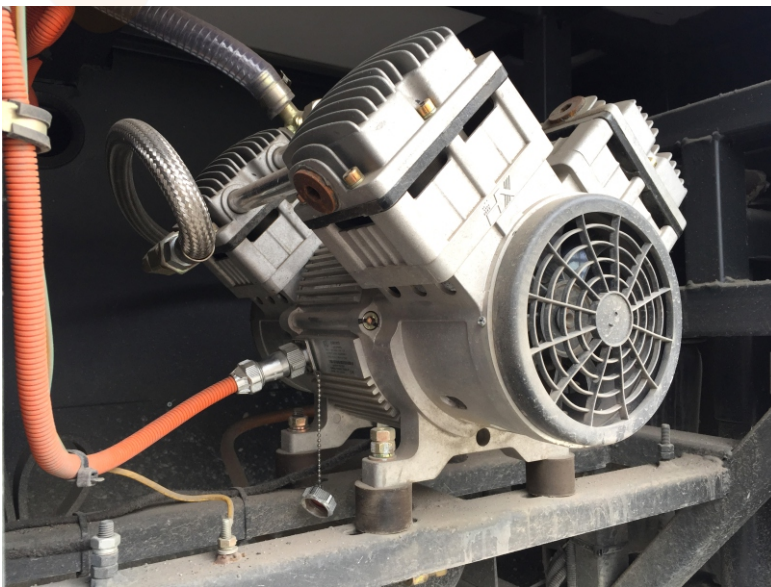




## New energy vehicles

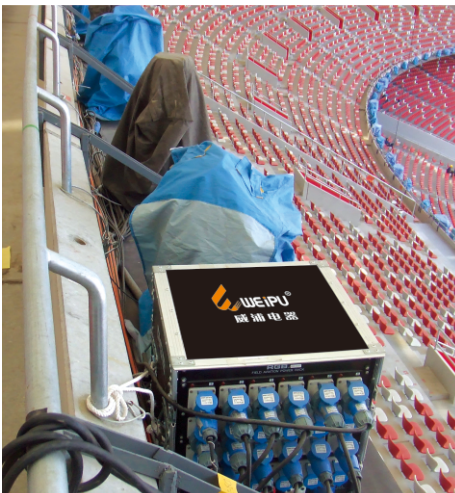


WEIPU's full range of connectors can provide safe and reliable connection for various applications in new energy field, which can meet the extremely harsh conditions of various new energy sites and greatly optimize the wiring of new energy equipment.



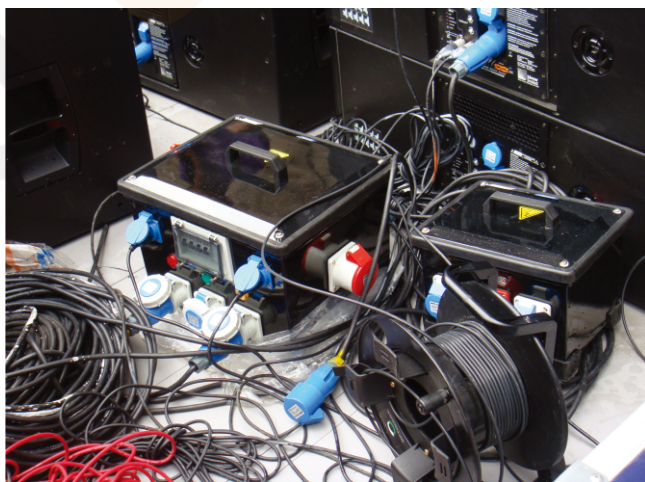


## Power supply engineering



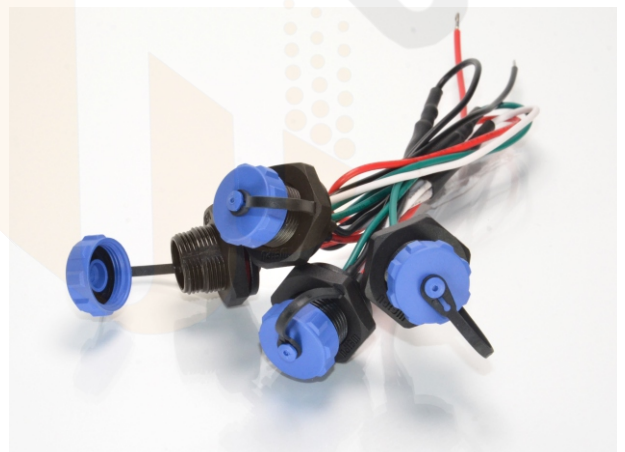
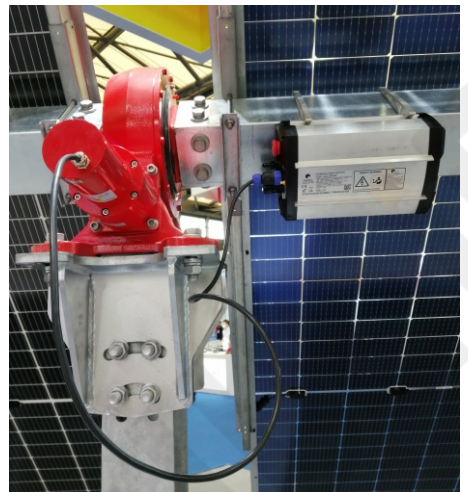
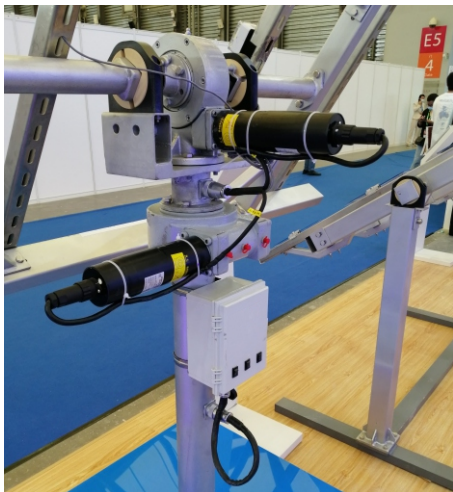


Sound and lighting engineering





Photovoltaic engineering





## Rail transit



## Electric Power Industry



## Communication engineering



## Chemical Engineering



B.C.E. S.r.l. - Via Regina Pacis, 54/c - Sassuolo (MO) - I 41049 - Italy  
Tel.: 0536 811616 - Fax: 0536 811500 - Web: [www.bce.it](http://www.bce.it) - E-mail: [bce@bce.it](mailto:bce@bce.it)

## Harness customization scheme

---





## Harness customization scheme

---



## Harness customization scheme

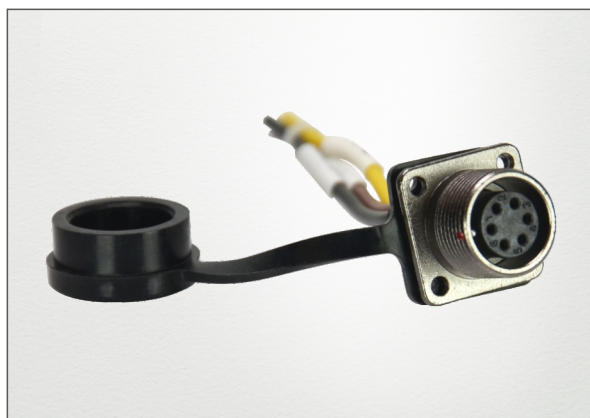
---





## Harness customization scheme

---





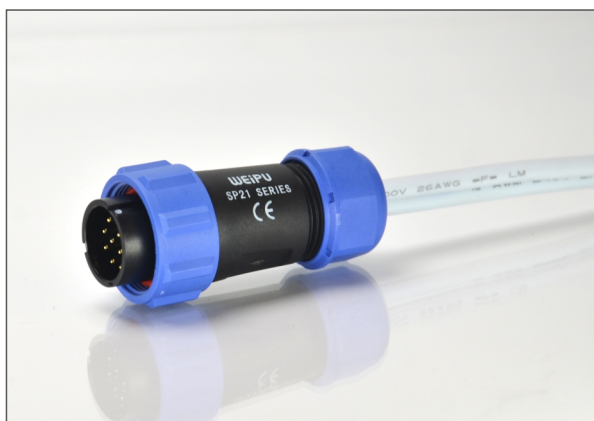
## Harness customization scheme

---



## Harness customization scheme

---



B.C.E. S.r.l. - Via Regina Pacis, 54/c - Sassuolo (MO) - I 41049 - Italy  
 Tel.: 0536 811616 - Fax: 0536 811500 - Web: [www.bce.it](http://www.bce.it) - E-mail: [bce@bce.it](mailto:bce@bce.it)



CCC CQC UL LISTED RA US RA C US CE TÜV ISO 9001 ISO/TS 22163 IATF16949

[www.weipuconnector.com](http://www.weipuconnector.com)

Edition: 202309-1

**B.C.E.**  
ELECTRONICS  
Importation & Distribution  
Electronic Components

**B.C.E. s.r.l.**  
Via Regina Pacis, 54/c - 41049 SASSUOLO (MO) Italy  
Tel. +39 0536 811.616 r.a. - Fax +39 0536 811.500  
[www.bce.it](http://www.bce.it) - E-mail: [bce@bce.it](mailto:bce@bce.it)

