



Push-Pull Connector

SF & SA series

Easy & Fast Connection

according to the latest standards

Easy to Connect & Disconnect

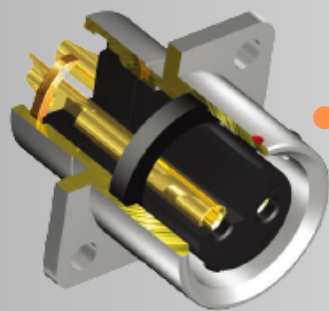
Fast connection with IP67 protection

SF & SA series



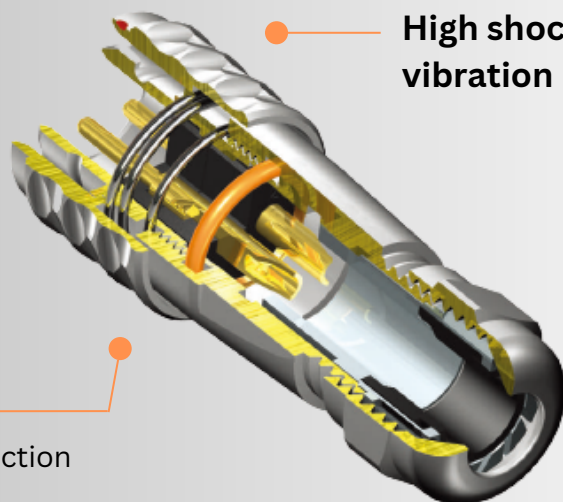
FEATURE

- IP67 protection
- Easy-to-use connection
- High shock & vibration resistance
- Temperature range: -40°C to +85°C
- Rated current up to 100 A
- Rated voltage up to 500 AC.V.
- 500 mating cycles guaranteed



Fast & Safe Lock
Push pull connection

Long-lasting and durable
500 mating cycles guaranteed



High shock & vibration resistance

IP67 Protection
Achieve highly sealing protection



SF SERIES

- Shell Material: Brass with chrome plating
- Size: SF6-SF20
- Pin Options: 1-15
- Termination: Solder/Crimp/Screw
- Up to 100A, 500V
- Temperature range: -40°C~+85°C
- Mating Cycle: 500 times
- CE / RoHS/ UL approval



SA SERIES

- Shell Material: Anodized aluminum
- Size: SA6-SA28
- Pin Options: 1-35
- Termination: Solder/Crimp/Screw
- Up to 100A, 500V
- Temperature range: -40°C~+85°C
- Mating Cycle: 500 times
- CE / RoHS approval
- Color options: Standard: Black/Silver;
Special: Blue/Green/Red



APPLICATION



Test &
Measurement



Automation



LED
Lighting



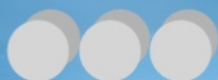
Security &
Defense



Audio Equipment



Mechanical
Keyboard



B.C.E. S.r.l. - Via Regina Pacis, 54/c - I 41049 Sassuolo (MO), Italy

Tel: (+39) 0536 811616 Fax: (+39) 0536 811500 E-mail: bce@bce.it Web: www.bce.it

