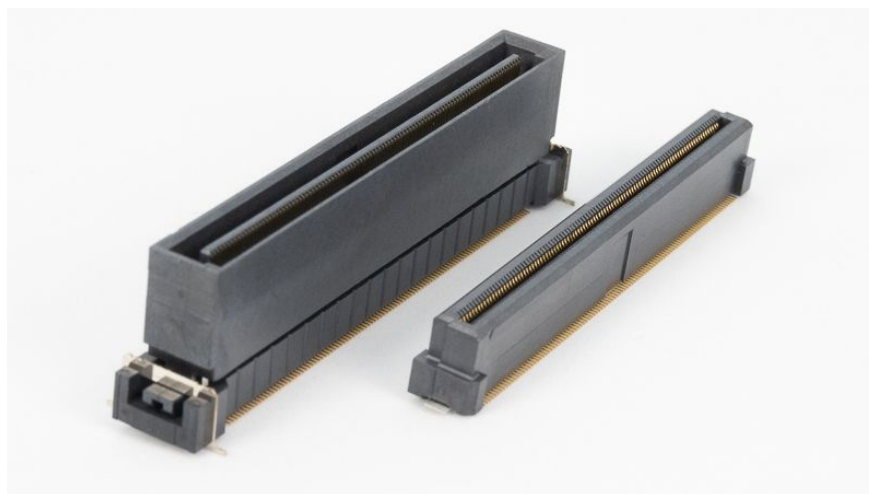


"DT series" floating connector XY direction $\pm 1.2\text{mm}$ movable type



<Product overview>

- It is possible to move the floating amount $\pm 1.2\text{mm}$ in the XY direction.
- Transmission characteristics meet all the requirements of SATA Rev 3.0.
number of contacts of 140 and 200 are available.
- The connection configuration is a stacked mating.
- Stack height is 20mm.
- The operating temperature corresponds to $-40\text{ }^{\circ}\text{C}$ to $+105\text{ }^{\circ}\text{C}$.
- Samples with 200 number of contacts and 20mm stack height are available.

<Product specifications>

- Insulator materials : LCP (glass-filled) UL94V-0; Color: Black
- Contact material : Copper alloy
- Contact plating : Gold over Nickel
- Retention clip material : Copper alloy
- Retention clip plating : Tin over Nickel
- Rated current rating : 0.4A per contact
- Contact contact resistance : $80\text{m}\Omega$ or less
- Dielectric withstand voltage : AC 200V, 1 minute
- Insulation insulation resistance : DC 250V, $100\text{M}\Omega$ or more
- Insertion/Extraction durability : 100 times
- Operating temperature : $-40\text{ }^{\circ}\text{C}$ to $+105\text{ }^{\circ}\text{C}$

<Application>

- Electric power equipment market • Vehicle equipment market • Industrial equipment market
- Electronic application equipment market • Amusement equipment market • Office equipment market

* Because this is a product under development, the specifications, shape, and series name are subject to change without notice.

©2023 KEL Corporation. All rights reserved

B.C.E. S.r.l. - Via Regina Pacis, 54/c - I 41049 Sassuolo (MO), Italy

Tel: (+39) 0536 811616

Fax: (+39) 0536 811500

E-mail: bce@bce.it

Web: www.bce.it