



WEIPU[®] 2022

WATERPROOF CONNECTOR

About WEIPU




With nearly 30 years of experience, WEIPU provides comprehensive connector products and services, developing connecting solutions adapted to international markets and customers.

Our expertise: We have been on the front lines helping to shape the future of the development of industries. Our products enhance connectivity comfort, safety, and efficiency. The connectors we produce, whose high performance is the result of nearly 30 years of constant innovation, literally act as a link at the heart of the industry.

Our mission: As Industry 4.0 and IoT adoption continues to grow, providing smart connectivity has become a priority for many connector manufacturers. Smart connectivity is becoming a must for many industries to make possible more robust data transmission and reliable performance in critical services and emerging applications. With comprehensive connecting solutions and innovative capability, WEIPU is helping transform traditional technology into smart infrastructures.

Our purpose: We make the connectivity solutions connect whether on data, power, or signal connection- across a variety of industries such as renewable energy systems, LED lighting, test & measurement, battery energy storage systems, communications, defense, security, and transportation, etc.

Efficiency & Quality

Termination Solder, Crimp, Screw PC Tail Options 	Pin Option From 1-pin to to 61-pin Options	Robust Power (up to 150Amps), Singal, Data, and Hybrid Connection 
IP rating IP44 to IP68 Outdoor & Indoor Use	Coupling Thread, Push-pull, Bayonet Options 	Custom Service Cable assembly, PC Tail pin, Shielding, Seal Potting

Core Style Overview

Straight Cable Plug



Angled Cable Plug



USB3.0/LC/HDMI/RJ45 Plug



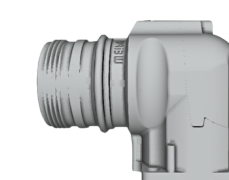
Straight Cable Receptacle



Angled Cable Receptacle



Angled Square Flange Receptacle



USB3.0/LC/HDMI/RJ45 Receptacle



Square Flange Receptacle



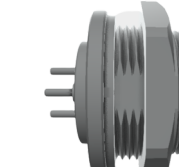
Two-hole Flange Receptacle



Rear-nut Receptacle



Front-nut Receptacle



Applications

Our customers have trusted us in interconnect projects for 30 years and, together with our team of experienced application specialists have turned their first ideas and complex projects into functioning solutions.

WEIPU is active in the fields of application:

- Renewable Energy
- Energy Storage
- E-mobility
- Lighting
- Robotics & Automation
- Test & Measurement
- Agriculture
- Security
- Traffic Engineering
- Railway Technology
- Medical Technology
- Mechanical Engineering
- Heavy Equipment
- Consumer

*Space and Weight-Saving,
High-Performance
Connectivity*



Contents

- 01** Threaded Coupling
- 02** Push-Pull Coupling
- 03** Bayonet Coupling
- 04** Hybrid Connector
- 05** Data Connector
- 06** Customized Service
- 07** Accessories
- 08** Heavy Duty & CEE Connector



New production plants & office buildings
built in 2016
Guangdong | China



Threaded Coupling

IP68



SP series



- Shell Material: PC, Nylon66
- Size: SP11-SP29
- Pin Options: 1-35
- Termination: Solder/Crimp/Screw
- Up to 60A, 500V
- Color options: Blue/ Custom color
- Temperature range: -40°C~+85°C
- Mating Cycle: 500 times
- CE / RoHS/ UL approval



IP67



M23 series

- Shell Material: Zinc alloy with nickel plating
- Type: Power/Signal
- Pin Options: 6&8 (Power); 9-19 (Signal); Custom Available
- Termination: Crimp
- Up to 28A, 600V (Power); 20A, 300V (Signal)
- Temperature range: -40°C~ +125°C
- Mating Cycle: 1000 times
- CE / RoHS



WA22 series



- Shell Material: Nylon66
- Pin Options: 3+PE & 6+PE
- Termination: Screw/Solder
- 16A, 400V ; 10A, 250V
- Temperature range: -40°C~+85°C
- Mating Cycle: 500 times
- CE / RoHS/CSA approval



ST12 series

- Shell Material: Zinc alloy with nickel plating
- Pin Options: 2-9
- Termination: Solder
- Up to 13A, 250V
- Temperature range: -40°C~+85°C
- Mating Cycle: 500 times
- CE / RoHS approval

IP66-IP67



WL52 series

- Shell Material: Anodized aluminum
- Pin Options: 19
- Termination: Solder
- Up to 25A, 500V
- Color options: Black (standard)/ Blue/Green/Orange/Purple/Red/Yellow
- Temperature range: -40°C~+85°C
- Mating Cycle: 500 times
- CE / RoHS approval

IP55-IP67



WF series

- Shell Material: Zinc alloy with chrome plating
- Size: WF16-WF55
- Pin Options: 1-61
- Termination: Solder/Crimp/Screw
- Up to 150A, 500V
- Temperature range: -40°C~+85°C
- Mating Cycle: 500 times
- CE / RoHS approval

IP55-IP65



WD28 series

- Shell Material: Zinc alloy with nickel plating
- Pin Options: 4 & 15
- Termination: Solder
- Up to 50A, 500V
- Temperature range: -40°C~+85°C
- Mating Cycle: 500 times
- CE / RoHS approval

Indoor Use



WS series

- Shell Material: Zinc alloy with chrome plating
- Size: WS16-WS55
- Pin Options: 1-61
- Termination: Solder/Crimp/Screw
- Up to 150A, 500V
- Temperature range: -40°C~+85°C
- Mating Cycle: 500 times
- CE / RoHS approval



WB series

- Shell Material: Zinc alloy with chrome plating
- Size: WB25 & WB30
- Pin Options: 4&7
- Termination: Solder
- Up to 30A, 500V
- Temperature range: -40°C~+85°C
- Mating Cycle: 500 times
- CE / RoHS approval

IP67



SF series



- Shell Material: Brass with chrome plating
- Size: SF6-SF20
- Pin Options: 1-15
- Termination: Solder/Crimp/Screw
- Up to 30A, 500V
- Temperature range: -40°C~+85°C
- Mating Cycle: 500 times
- CE / RoHS/ UL approval



SA series

- Shell Material: Anodized aluminum
- Size: SA6-SA28
- Pin Options: 1-35
- Termination: Solder/Crimp/Screw
- Up to 60A, 500V
- Temperature range: -40°C~+85°C
- Mating Cycle: 500 times
- CE / RoHS approval
- Color options: Standard: Black/Silver;
Special: Blue/Green/Red



SA24 series

- Shell Material: Anodized aluminum
- RJ45/USB3.0/LC/HDMI2.0
- ethernet Class D/Cat.5e and Class E/Cat 6 (10 Base T, 100 base TX, 1000 Base T networks)
- Temperature range: -20°C~+70°C
- Mating Cycle: 1000 times (USB3.0); 500 times (LC/HDMI2.0/RJ45)
- CE / RoHS approval
- Color options: Standard: Black/Silver;
Special: Blue/Green/Red

With IP67, WEIPU Push-Pull series not only gives fast connection but also protects the device from harsh conditions that may affect connected applications!



Bayonet Coupling

IP67



SY series



- Shell Material: PC, Nylon66
- Size: SY11-SY29
- Pin Options: 1-35
- Termination: Solder/Crimp/Screw
- Up to 60A, 500V
- Color options: Blue/ Custom Color
- Temperature range: -40°C~+85°C
- Mating Cycle: 500 times
- CE / RoHS/ UL approval



SY25 series

- Shell Material: PC, Nylon66
- USB3.0/LC/HDMI2.0/RJ45
- ethernet Class D/Cat.5e and Class E/Cat 6 (10 Base T, 100 base TX, 1000 Base T networks)
- Temperature range: -20°C~+70°C
- Mating Cycle: 1500 times(USB3.0); 500 times (LC/HDMI2.0/RJ45)
- CE / RoHS approval



WY12 series

- Shell Material: Zinc alloy with chrome plating
- Pin Options: 2-9
- Termination: Solder
- Up to 13A, 250V
- Temperature range: -40°C~+85°C
- Mating Cycle: 500 times
- CE / RoHS approval



WY24 series

- Shell Material: Zinc alloy with chrome plating
- USB3.0/LC/HDMI2.0/RJ45
- ethernet Class D/Cat.5e and Class E/Cat 6 (10 Base T, 100 base TX, 1000 Base T networks)
- Temperature range: -20°C~+70°C
- Mating Cycle: 1500 times (USB3.0); 500 times (LC/HDMI2.0/RJ45)
- CE / RoHS approval



RJ45 series

- Shell Material: PC
- ethernet Class D/Cat.5e and Class E/Cat 6 (10 Base T, 100 base TX, 1000 Base T networks)
- Temperature range: -40°C~+85°C
- Mating Cycle: 500 times
- CE / RoHS approval

Bayonet coupling design helps withstand impact, shock and vibration and ensures stable connection.

IP65



WAC3 series

- Shell Material: PC, Nylon66
- Up to 20A, 250V
- Termination: Plug: Screw; Socket: 3/16" Flat Tab Terminals
- Temperature range: -40°C~+85°C
- Mating Cycle: 1000 times
- CE / RoHS approval



WY series

- Shell Material: Zinc alloy with chrome plating
- Size: WY16-WY55
- Pin Options: 1-61
- Termination: Solder/Crimp/Screw
- Up to 150A, 500V
- Temperature range: -40°C~+85°C
- Mating Cycle: 500 times
- CE / RoHS approval

IP44-IP55



WP20 series

- Shell Material: Nylon66/ Zinc alloy
- Pin Options: 1-15
- Termination: Solder/Screw /Crimp
- Up to 30A, 500V
- Temperature range: -40°C~+85°C
- Mating Cycle: 500 times
- CE / RoHS approval

Indoor Use



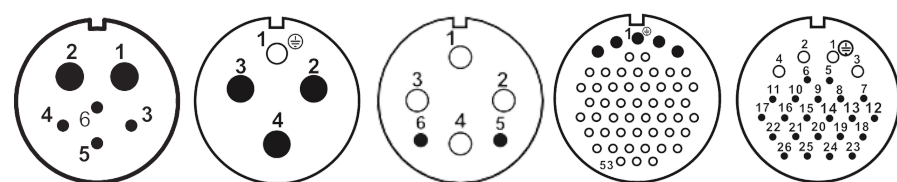
WT29 series

- Shell Material: Nylon PA66
- Pin Options: 3 & 5
- Termination: Solder
- Up to 10A, 400V
- Temperature range: -40°C~+85°C
- Mating Cycle: 500 times
- CE / RoHS approval



Hybrid Connector

Combine both **Signal** and **Power** in one connection.



Reliable Connection

Higher performance with fast signal communication and power connection with up to 150 Amps.

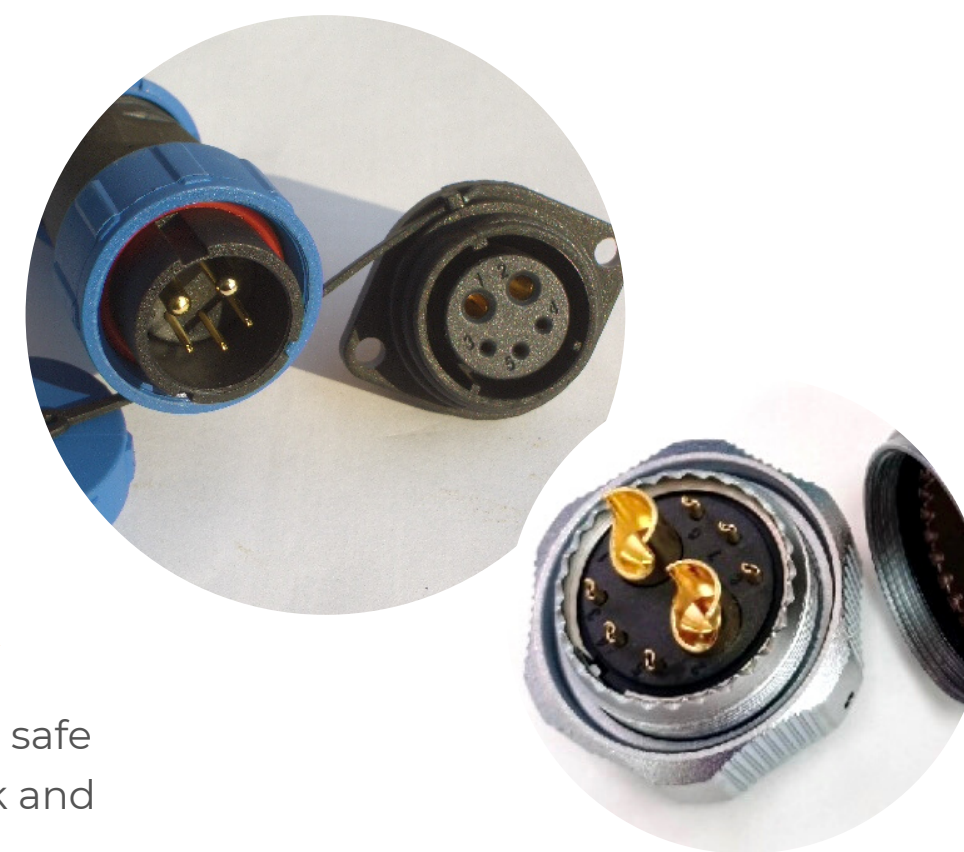
WEIPU provides a solution with a design providing up to 150 amps of power while simultaneously delivering high-speed signal transmission.

Up to IP68

The high sealing performance secures applications' operation even under hostile environments.

Anti-Vibrating

Bayonet coupling ensures safe locking even in high shock and vibration applications.



Product Line

WEIPU hybrid connectors offer multiple choices. With different terminations (Solder, Crimp, Screw), shell material (Metal, Plastic), IP rating (up to IP68), and 4-pin to 53-pin options, we can best meet different industries' needs.

Metal



SF series



SA series



WS series



WF series



WY series



WD28 series

Plastic



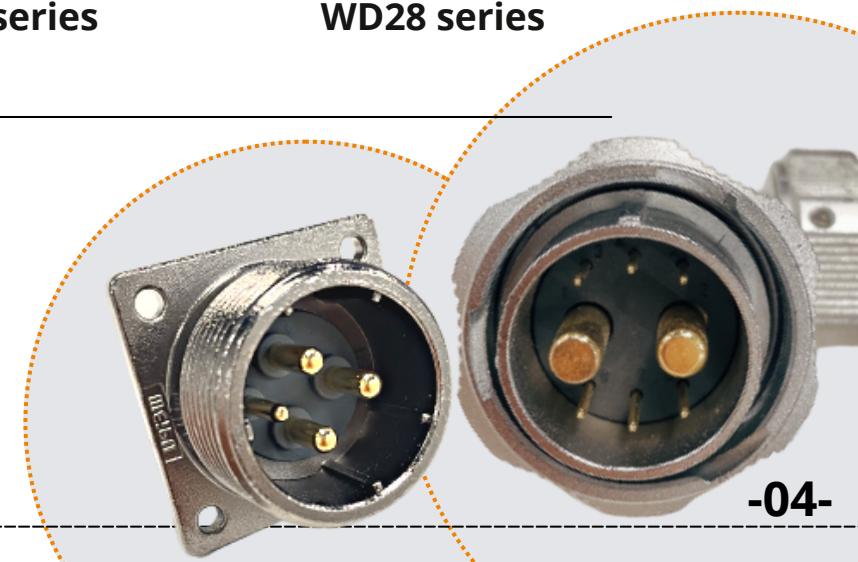
SP series



SY series



WP20 series



Data Connector

WEIPU Data connectors are designed specifically for USB, LC, HDMI, and RJ45 applications. With up to IP67-rated environmentally sealed function, the connectors provide secure and safe connections in harsh environments.



SA24 series

- Shell Material: Anodized aluminum
- RJ45/USB3.0/LC/HDMI2.0
- ethernet Class D/Cat.5e and Class E/Cat 6 (10 Base T, 100 base TX, 1000 Base T networks)
- Temperature range: -20°C~+70°C
- Mating Cycle: 1000 times (USB3.0); 500 times (LC/HDMI2.0/RJ45)
- CE / RoHS approval
- Color options: Standard: Black/Silver; Special: Blue/Green/Red



WY24 series

- Shell Material: Zinc alloy with chrome plating
- RJ45/USB3.0/LC/HDMI2.0
- ethernet Class D/Cat.5e and Class E/Cat 6 (10 Base T, 100 base TX, 1000 Base T networks)
- Temperature range: -20°C~+70°C
- Mating Cycle: 1500 times (USB3.0); 500 times (LC/HDMI2.0/RJ45)
- CE / RoHS approval



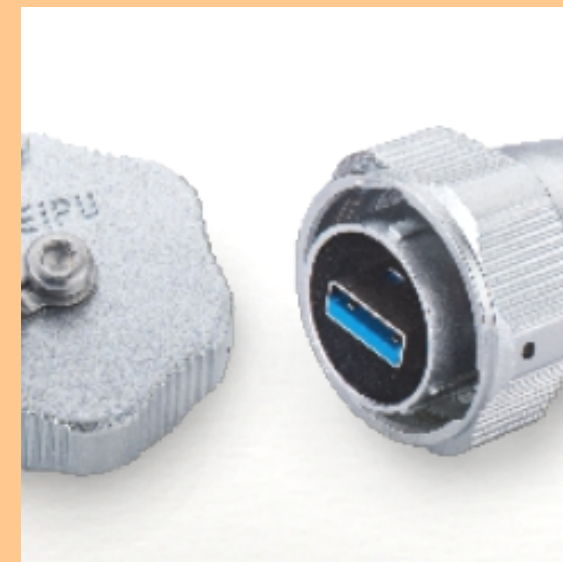
SY25 series

- Shell Material: PC, Nylon66
- RJ45/USB3.0/LC/HDMI2.0
- ethernet Class D/Cat.5e and Class E/Cat 6 (10 Base T, 100 base TX, 1000 Base T networks)
- Temperature range: -20°C~+70°C
- Mating Cycle: 1500 times (USB3.0); 500 times (LC/HDMI2.0/RJ45)
- CE / RoHS approval



RJ45 series

- Shell Material: PC
- ethernet Class D/Cat.5e and Class E/Cat 6 (10 Base T, 100 base TX, 1000 Base T networks)
- Temperature range: -40°C~+85°C
- Mating Cycle: 500 times
- CE / RoHS approval



Cable Assembly & Molding

With UL-approved cable harness, Weipu is committed to providing reliable customized assembled cable solution.

- *Cable Assembly:*
All series available
- *Cable Overmolding:*
SF/SA/SP/SY series available

PC Tail Pin

PCB pin can be customized with the size of the PCB pin diameter from Φ 0.6 to Φ 3.

- *SF/SA/ST/SP/SY/WS/WF/WY/WP series are available.*

Multiple-hole entry

This solution gives cost savings and space savings. It answers the need when several cables need to be terminated into one single cord grip.

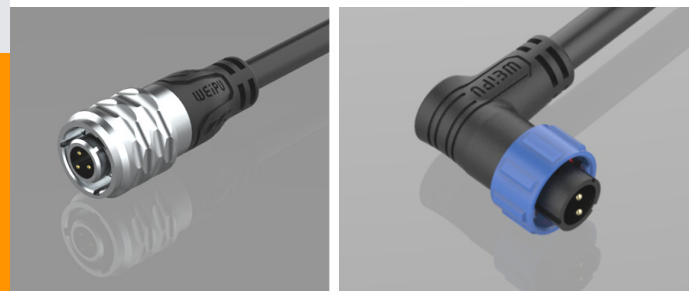


Custom Color

We offer custom shell color services to meet the demand for different color solutions from industries.

Shielding Circle

To meet the rising need of different industries for shielding functions, WEIPU offers a custom shielding circle with a grounding arrangement.



Cable Gland



Plastic Material



Metal Material



Plastic Accessories



Metal Accessories



Plastic & Metal Hose

Adapter



Junction Box



Crimp Contact Spec & Tool



For Series:
SA/SF/SP/SY/WP/M23
WS/WF/WY

Heavy Duty (Rectangular Connector)

To offer comprehensive connecting solution to meet different requirements from various industries, we also offer heavy duty and CEE connectors.



Space Saving, Low-maintenance, for Harsh Environments

Inserts:

- UL94 V-0 thermoplastic material
- Terminations: Screw, Crimp, Cage Clamp, Axial Screw

Hoods/Housing:

- Plastic & Metal material
- Up to IP 69K protection

Hoods/Housing:

- Plastic & Metal material
- Up to IP 69K protection

Design Standard:

IEC61984, IEC60664-1, IEC60352, IEC60529, EN175301-801

CEE connector & Distribution box

Roboust Design, High Current & Voltage



Plug

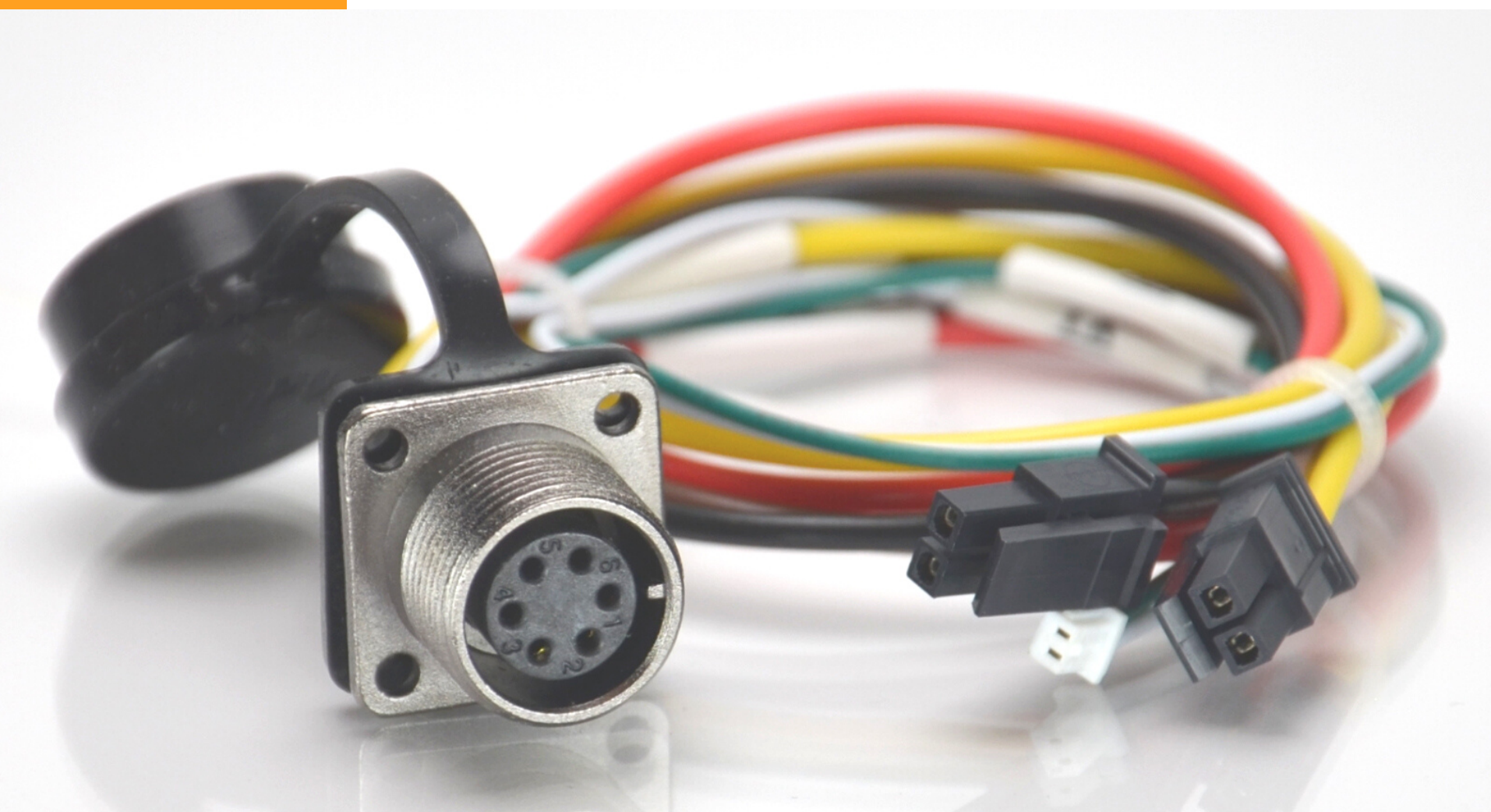


Socket



Distribution box

***"WEIPU, Smart & Waterproof
Connection Provider"***



 **WEIPU[®] Connector**

**B.C.E.
ELECTRONICS**
Importation & Distribution
Electronic Components

B.C.E. s.r.l.
Via Regina Pacis, 54/c - 41049 SASSUOLO (MO) Italy
Tel. +39 0536 811.616 r.a. - Fax +39 0536 811.500
www.bce.it - E-mail: bce@bce.it

