



ISO 9001
ISO 14001
IATF 16949
QC080000

欣訊科技 
CEN LINK CO., LTD.

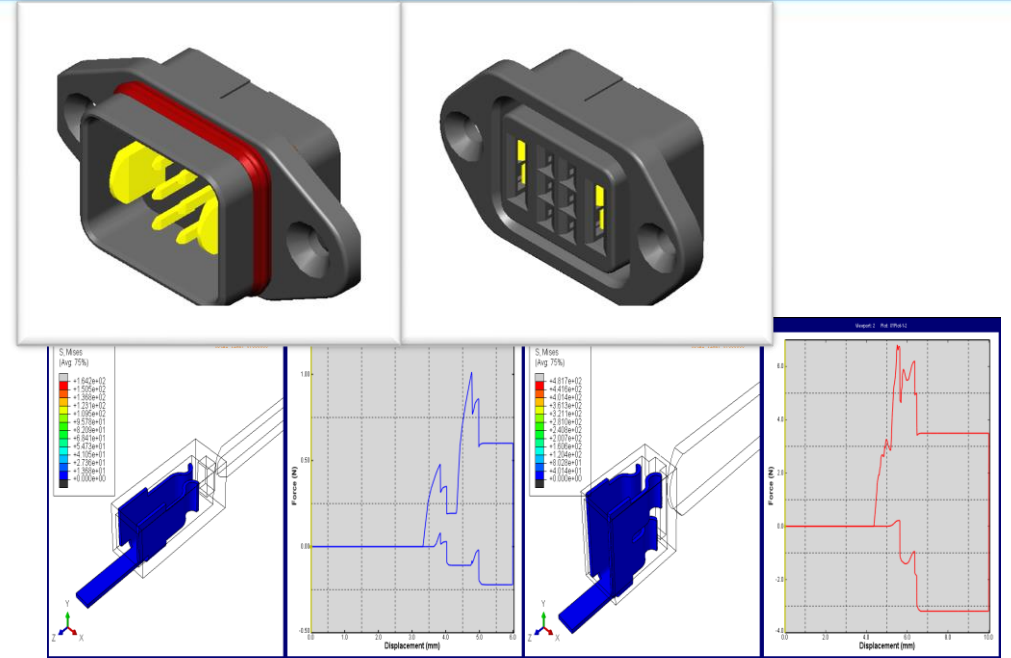
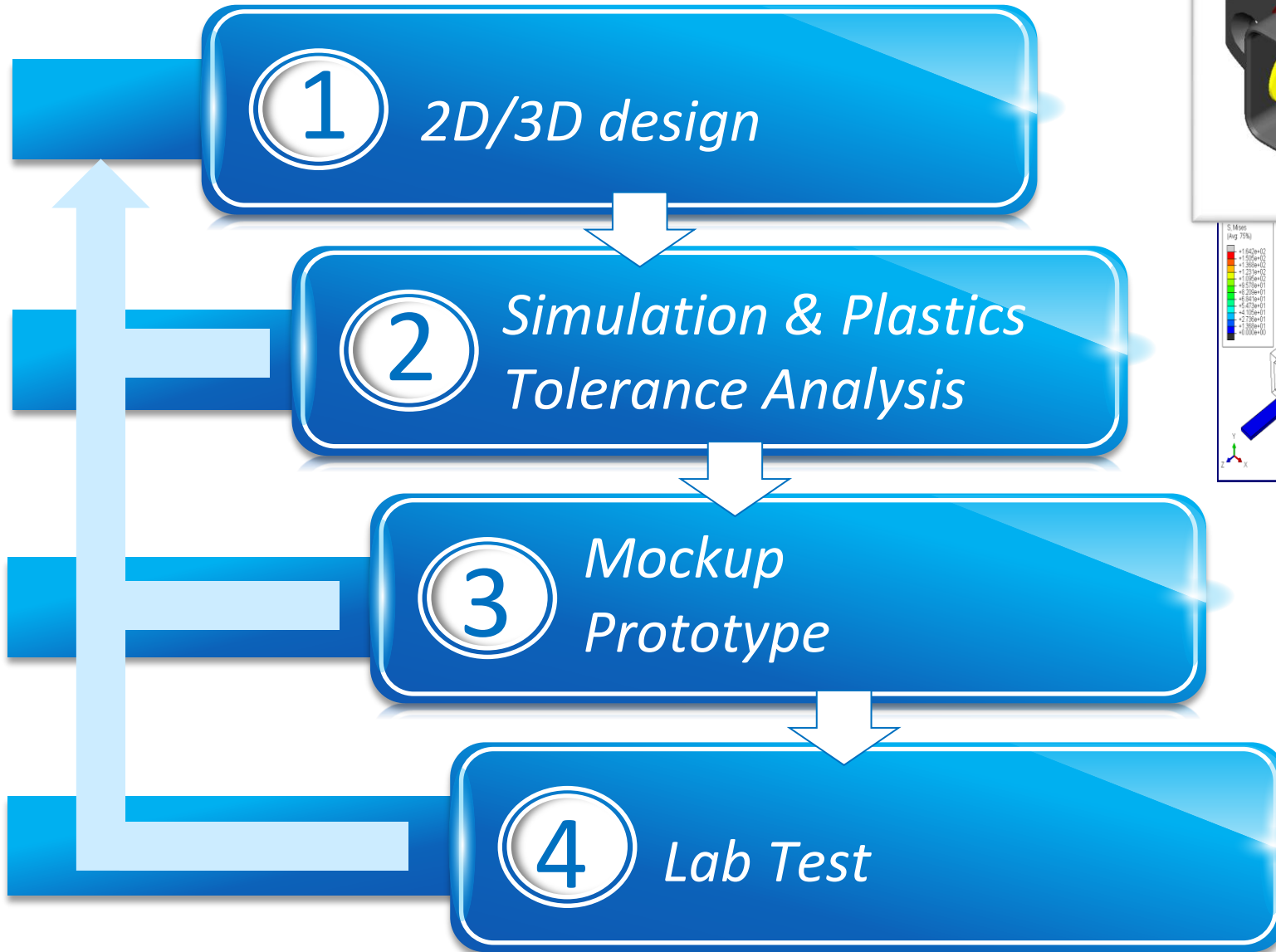
WTW Battery Connector (2P2S~2P6S) Product introduction

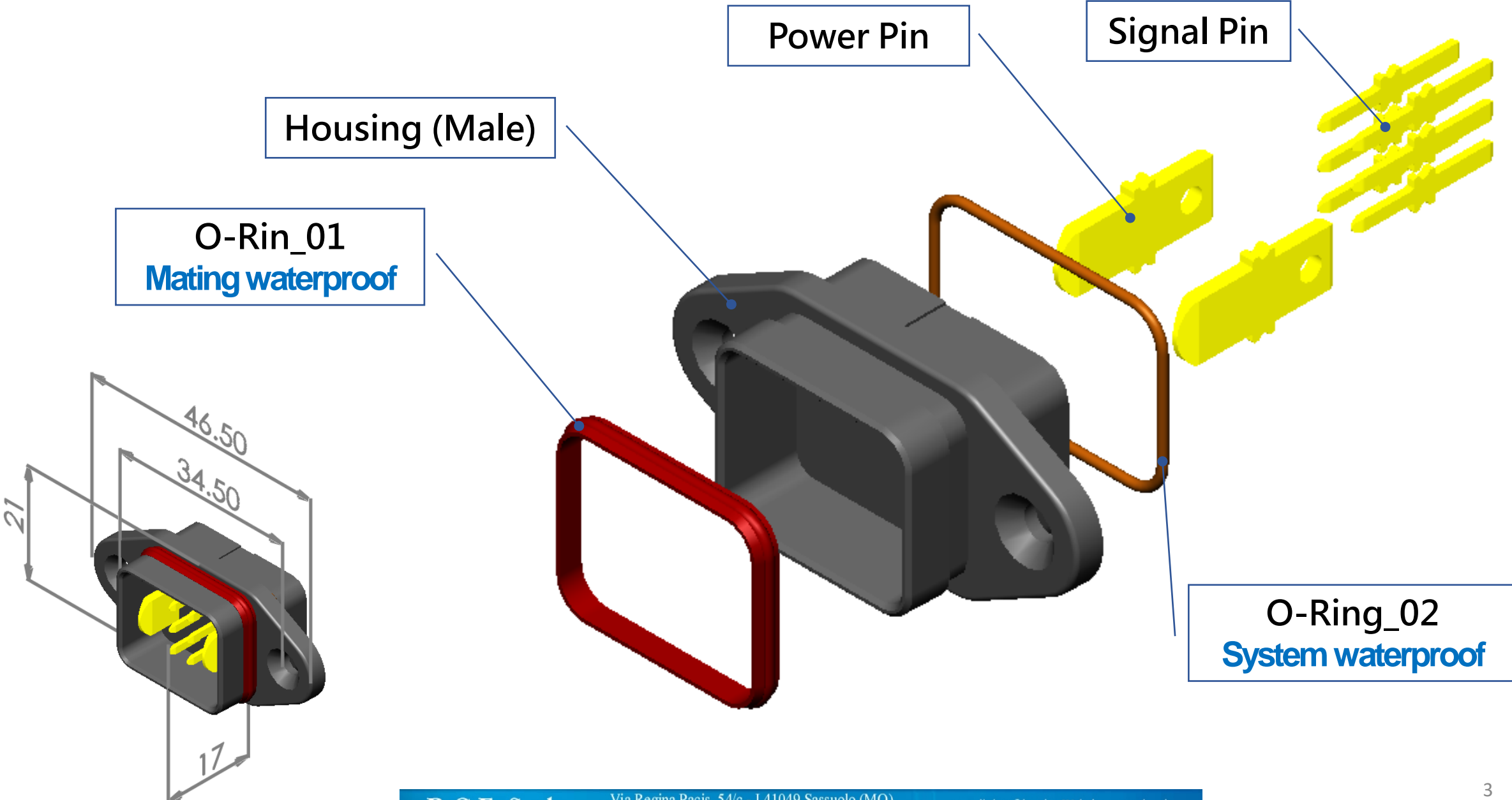


Since 1981

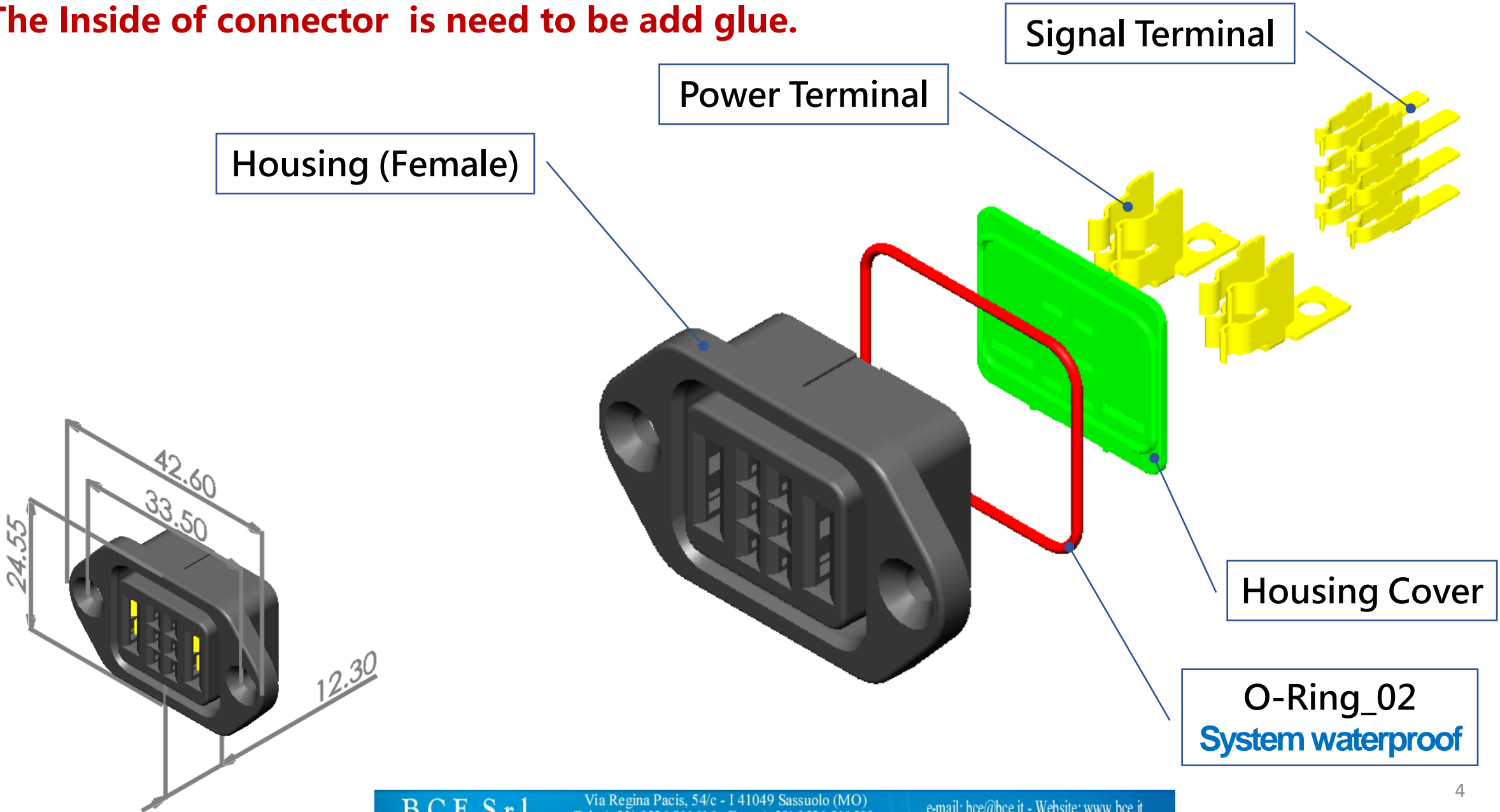
The Best Service, Timely Delivery, Low Price, High Quality

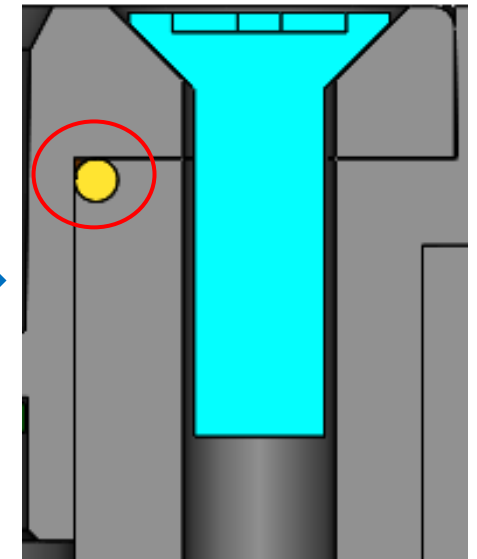
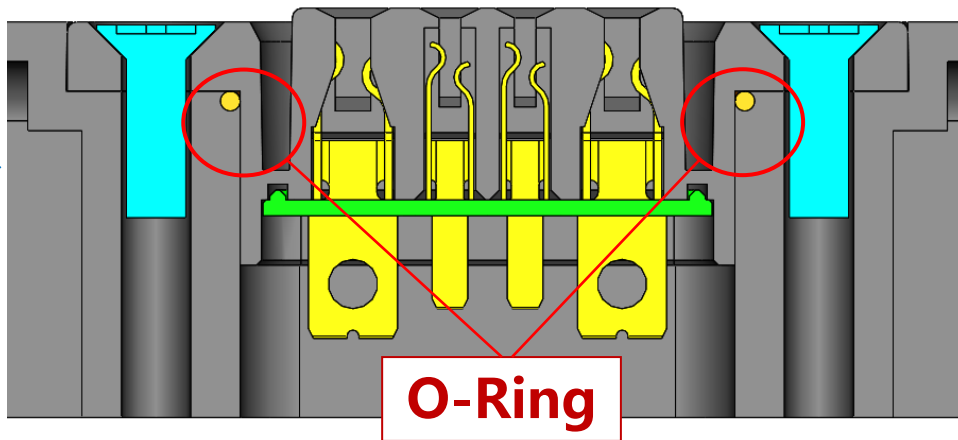
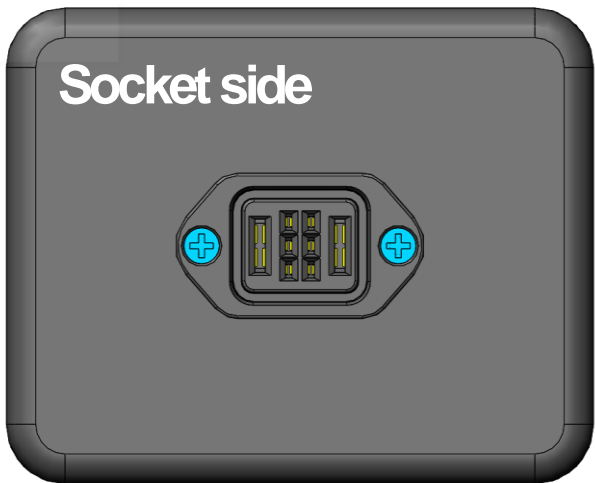
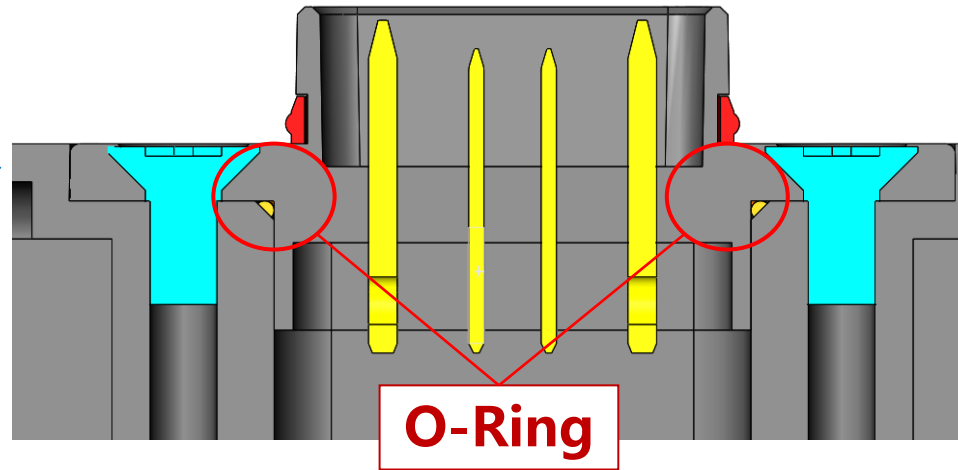
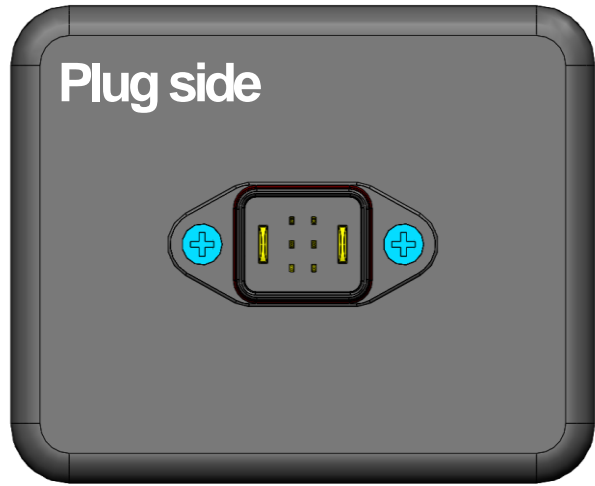






The Inside of connector is need to be add glue.





The outside of connector is covered O-ring, it's need to be match with the customer.

Battery Connector

Operating Temp	-40°C - +85°C (125°C Peak)
Voltage	60 V DC
Insertion Force	50 N (Max.)
Withdrawal Force	5 N (Min.)
Durability	3000 Cycles
Current	Power : 25 A (12 AWG Max.)
	Signal : 5 A (20 AWG Max.)
Waterproof	Plug side : IPX5
	Socket side : IPX7
	Mating : IPX6



(2P2S)
CEN P/N:
TSN1-01701-02YN
TSN0-01701-02YN

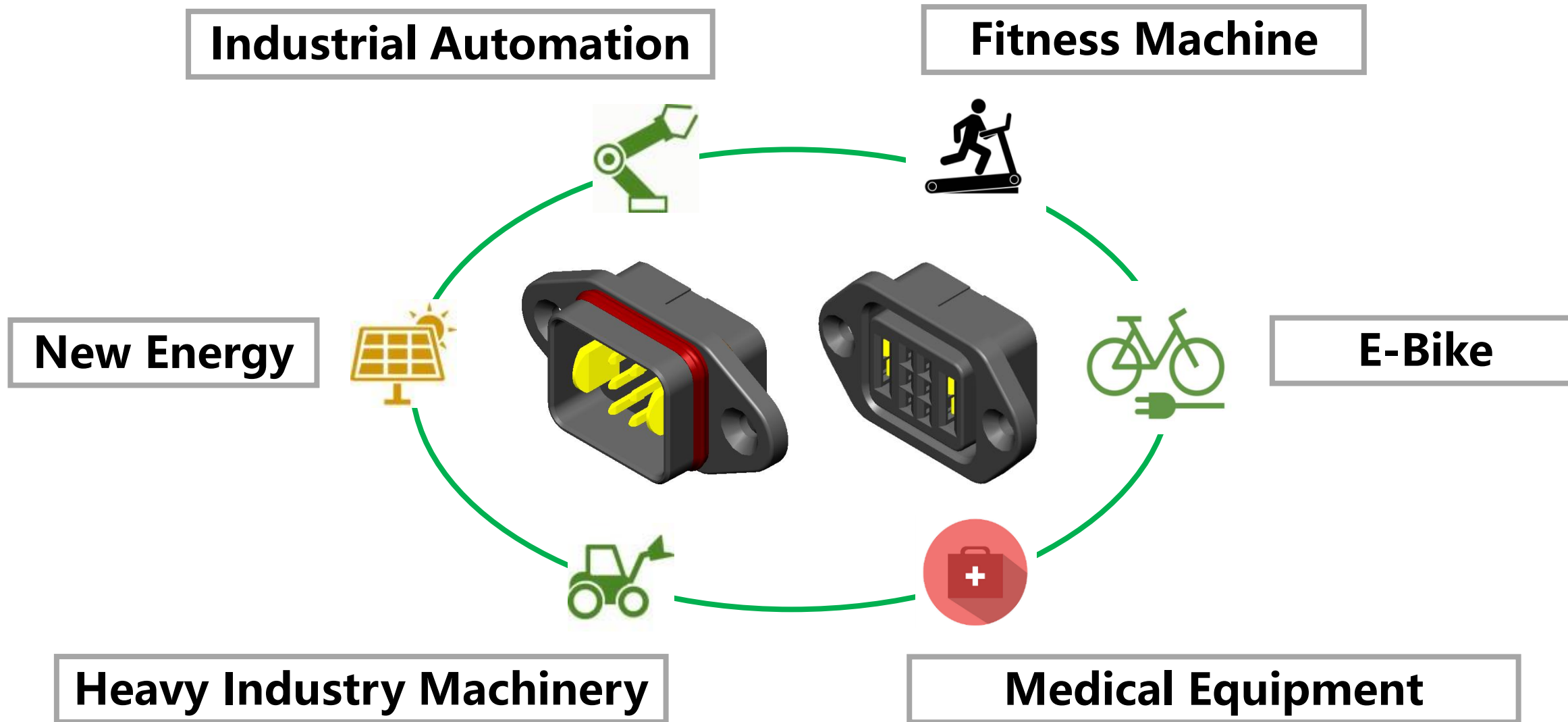


(2P4S)
CEN P/N:
TSN1-01701-04YN
TSN0-01701-04YN



(2P6S)
CEN P/N:
TSN1-01701-06YN
TSN0-01701-06YN







B.C.E. s.r.l.
Via Regina Pacis, 54/c - 41049 SASSUOLO (MO) Italy
Tel. +39 0536 811.616 r.a. - Fax +39 0536 811.500
www.bce.it - E-mail: bce@bce.it



Thank you