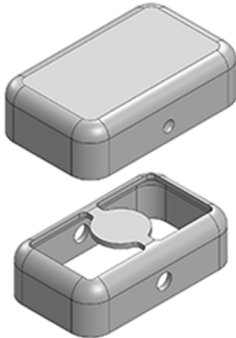


MS On-Board

[See More](#)

Introducing: MS102-10

Two-piece Drawn-Seamless EMI/RFI Shield
Standard (Off-the-shelf) Product

Two-piece RF Shield **10.2 x 6 x 3 mm (Frame)**, EMI Shielded Can, RF Shielding Cabinet for PCB, Board Level Shielding, Tin Plated Steel

Complimentary **CAD files** downloads are available online for immediate implementation.

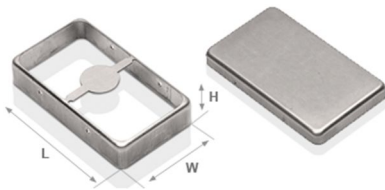
[Download CAD files](#)



Check out our wide range
of standard shields

Pick out your required shield

[Available Now Online!](#)



MS Drawn EMI/RFI Shields Features & Benefits:

Seamless Protective Cage

For higher shielding effectiveness.

Solid Construction

To resist dents and warps.

Optimal Planarity

For higher yield on reflow soldering.

Two-piece Shield Design

enables to repair components without removing the shield,
saving time and reducing repair damage.

You may also like:



**MASACH
ENGINEERING
SAMPLE KIT**
[Product Page](#)



**MASACH
CATALOGUE**
[Download](#)