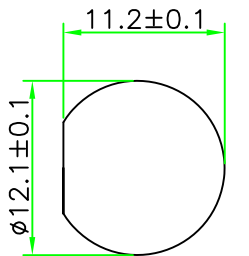
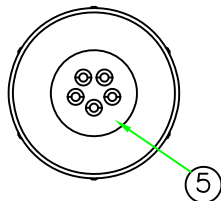


REV.	DESCRIPTION	DATE
A	ISSUE	Arp/17/2018

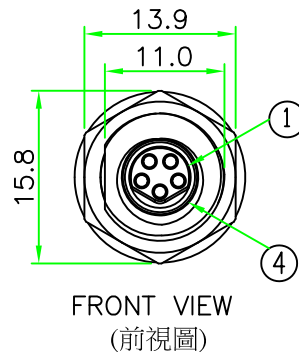
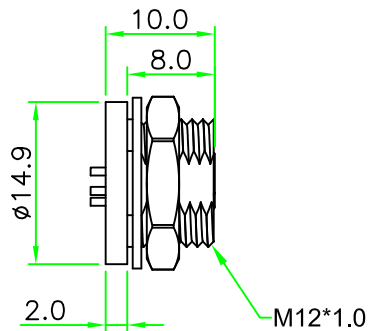


RECOMMENDED
PANEL CUT-OUT

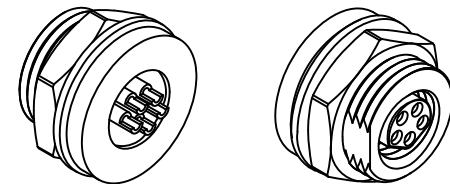
RoHS
IP66~68



REAR VIEW
(後視圖)

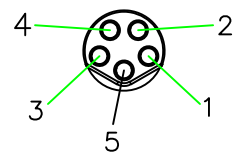


FRONT VIEW
(前視圖)

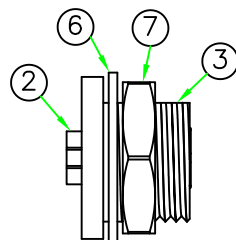


NOTES:

- ELECTRICAL CHARACTERISTICS:
CURRENT RATING: 3A
TEMPERATURE RANGE: -25°C TO +85°C
DIELECTRIC WITHSTANDING VOLTAGE:
500V AC FOR ONE MINUTE
- PANEL THICKNESS MAX. 4.0mm



PIN ASSIGNMENT
FRONT VIEW
(前視圖)



7	HEX NUT	Brass ,Nickel Plated.			1	
6	GASKET	EPDM	BLACK		1	
5	GLUE	EPOXY.	BLACK		1	
4	O-RING	VITON	BLACK		1	
3	HOUSING	Brass, Nickel Plated.			1	
2	CONTACT	Brass, 6 u" Gold plated. Female Contact.			5	
1	CONNECTOR	M8 B-Coding Female Connector Insert, NYLON+GF.	BLACK		1	12-135
No.	PART NAME	DESCRIPTION	COLOR	Q'TY	REMARKS	

HOLIN® HTP ASIA TECHNOLOGY CO., LTD.
禾凌科技股份有限公司

		UNIT:mm	TITLE : M8 B-Coding Female Panel Connector Rear mount Circular Flange With Solder Bucket Pin
SCALE	1.5:1		
UNLESS OTHERWISE SPECIFIED TOLERANCES: .x ± 0.25 .xx ± 0.1 .xxx ± 0.05 ANGLE ± 1°			P/N: B08D-M205CSR-S12
REV.	SHEET	DWG.NO:	DR. SIBYL CH. ERIC
A	1/1	B08D-M205CSR-S12	AP.