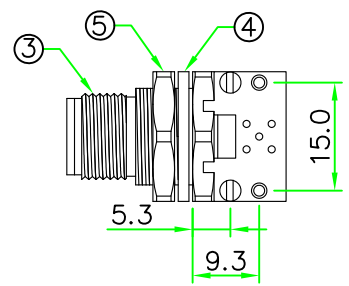
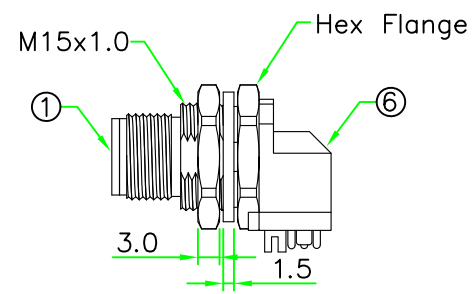
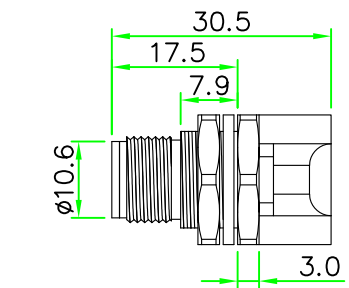
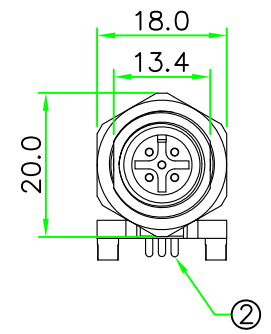
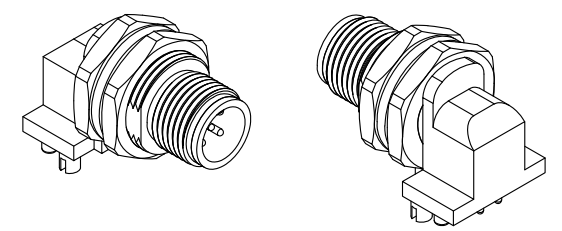


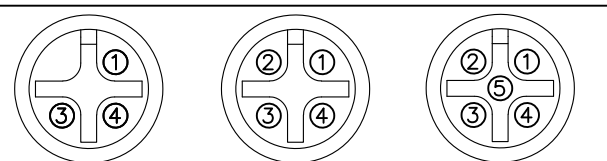
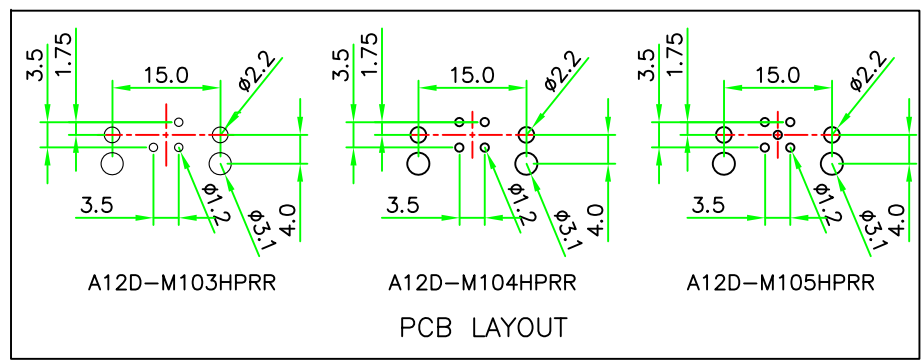
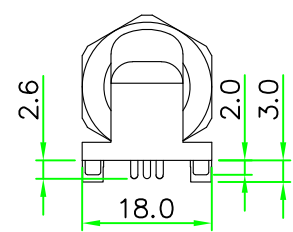
RoHS
IP66~68



REV.	DESCRIPTION	DATE
A	ISSUE	Nov/27/2018



- NOTES:
- ELECTRICAL CHARACTERISTICS:
CURRENT RATING: 4A
TEMPERATURE RANGE: -25°C TO +85°C
DIELECTRIC WITHSTANDING VOLTAGE:
500V AC FOR ONE MINUTE
 - HOW TO ORDER: A12D-M1xxHPRR
 - 03 - 3 PINS
 - 04 - 4 PINS
 - 05 - 5 PINS



A12D-M103HPRR A12D-M104HPRR A12D-M105HPRR
PIN ASSIGNMENT FRONT VIEW(前視圖)

No.	PART NAME	DESCRIPTION	COLOR	Q'TY	REMARKS
6	HOLDER	Nylon+GF.	BLACK	1	
5	HEX NUT	Brass, Nickel Plated.		1	
4	GASKET	Rubber.	BLACK	1	
3	HOUSING	Brass, Nickel Plated.		1	
2	CONTACT	Brass, 6 u" Gold Plated. Male Contact.		N	
1	CONNECTOR	M12 A-Coding Male Connector Insert. Nylon+GF.	BLACK	1	

HOLIN® HTP ASIA TECHNOLOGY CO., LTD.
禾凌科技股份有限公司

UNIT: mm TITLE : M12 A-Coding Male Panel Connector Rear Mount Hex Flange R/A PCB Pin

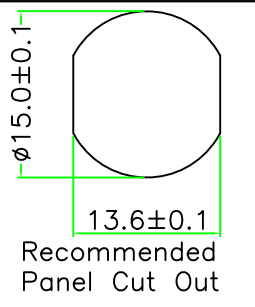
SCALE 1:1

UNLESS OTHERWISE SPECIFIED TOLERANCES:
 x ±0.5 xx ±0.25
 xxx ±0.1 ANGLE ± 1°

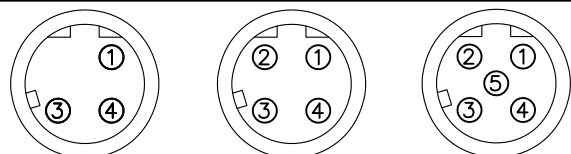
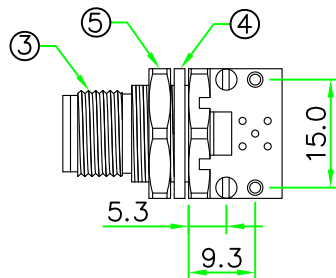
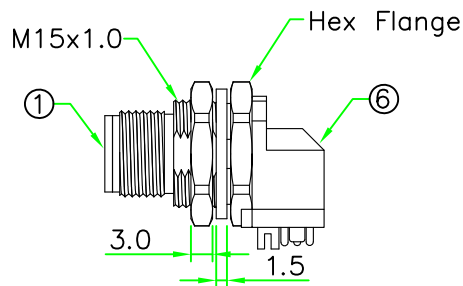
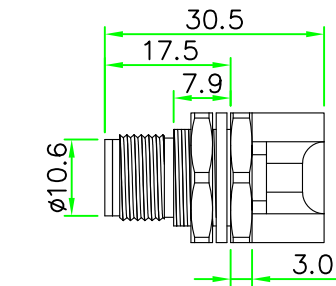
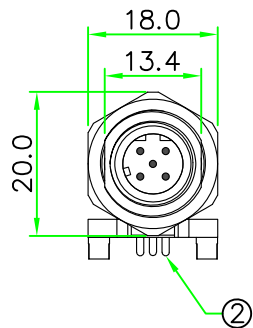
P/N: A12D-M1xxHPRR DR. SIBYL
 CH. ERIC

DWG.NO: A12D-M1xxHPRR AP.

A 1/1



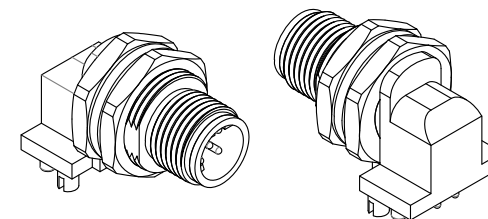
RoHS
IP66~68



A12D-M103HPRR A12D-M104HPRR A12D-M105HPRR

PIN ASSIGNMENT FRONT VIEW(前視圖)

REV.	DESCRIPTION	DATE
A	ISSUE	Feb/23/2019



NOTES:

- ELECTRICAL CHARACTERISTICS:
CURRENT RATING: 4A
TEMPERATURE RANGE: -25°C TO +85°C
DIELECTRIC WITHSTANDING VOLTAGE:
500V AC FOR ONE MINUTE
- HOW TO ORDER: D12D-M1xxHPRR

- 03 - 3 PINS
- 04 - 4 PINS
- 05 - 5 PINS

No.	PART NAME	DESCRIPTION	COLOR	Q'TY	REMARKS
6	HOLDER	Nylon+GF.	BLACK	1	
5	HEX NUT	BRASS, Nickel Plated.		1	
4	GASKET	EPDM.	BLACK	1	
3	HOUSING	BRASS, Nickel Plated.		1	
2	CONTACT	BRASS, 6 u" Gold Plated. Male Contact.		N	
1	CONNECTOR	M12 D-Coding Male Connector Insert. Nylon+GF.	BLACK	1	

HOLIN® HTP ASIA TECHNOLOGY CO., LTD. 禾凌科技股份有限公司	
UNIT: mm SCALE 1:1 UNLESS OTHERWISE SPECIFIED TOLERANCES: x ±0.5 xx ±0.25 xxx ±0.1 ANGLE ± 1°	TITLE : M12 D-Coding Male Panel Connector Rear Mount Hex Flange R/A PCB Pin P/N: D12D-M1xxHPRR DWG.NO: D12D-M1xxHPRR
A	1/1
DR. James	CH. ERIC
AP.	