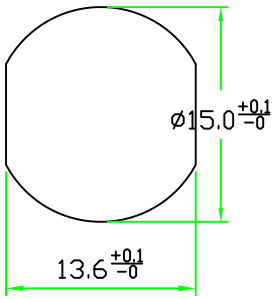
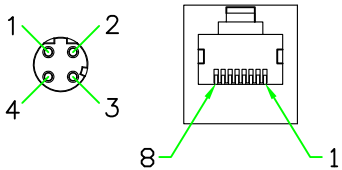
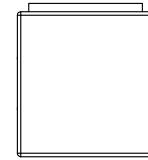
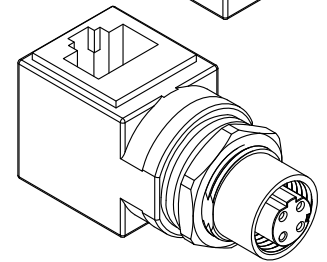
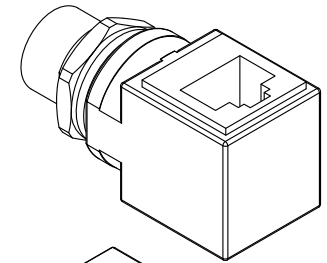
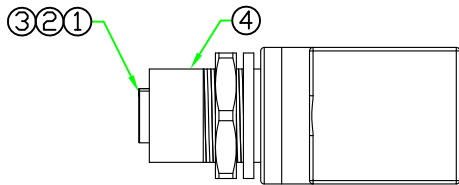
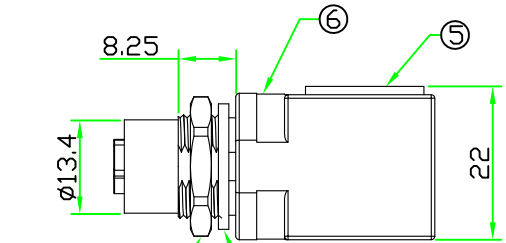
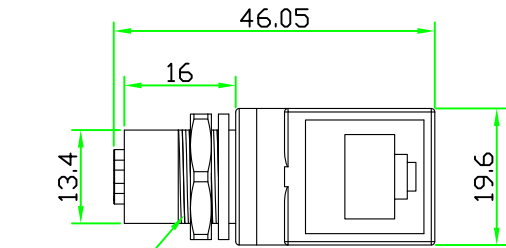


REV	DESCRIPTION	DATE
A	ISSUE	Dec/15/2011



Recommended Panel Cut-Off



PIN ASSIGNMENT FRONT VIEW

WIRING DIAGRAM

D12D-M204HSR

RJ45 JACK



8	HEX NUT	BRASS. NICKEL PLATED.		1	M12P-NUT-R
7	GASKET	EPDM.	BLACK	1	M12-G-EP70
6	OVERMOLD	PU.	BLACK	1	
5	RJ45 JACK	STRAIGHT ANGLE WITH SHIELD.		1	9646-8814-SA-A
4	METAL SHELL	BRASS.NICKEL PLATED.		1	M12F-RPH-KTA-A3
3	O-RING	VITON.	BLACK	1	M12-O-VK
2	CONTACT	BRASS. 6u" GOLD PLATED. FEMALE PIN.		4	M12F-1.0SPL20.5
1	CONNECTOR	M12 D-Coding 4P FEMALE CONNECTOR INSERT. NYLON+GF.	BLACK	1	D12D-4FC (20-135-N5)
No.	PART NAME	DESCRIPTION	COLOR	Q'TY	REMARKS

HOLIN® HTP ASIA TECHNOLOGY CO., LTD.
禾凌科技股份有限公司

	UNIT: mm	TITLE :	M12 D-Coding 4P FEMALE to RJ45 JACK Ethernet Adaptor
SCALE	1:1	P/N:	D12DRJI-M204J
UNLESS OTHERWISE SPECIFIED TOLERANCES: X ±0.25 XX ±0.1 XXX ±0.05 ANGLE ± 1°X		DWG.NO:	D12DRJI-M204J
REV. A	SHEET 1/1		

DR. *jaek*
CH. *michael*
AP.