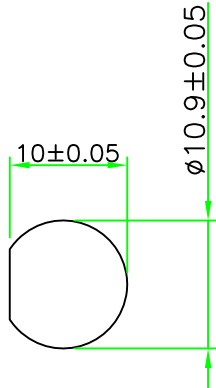
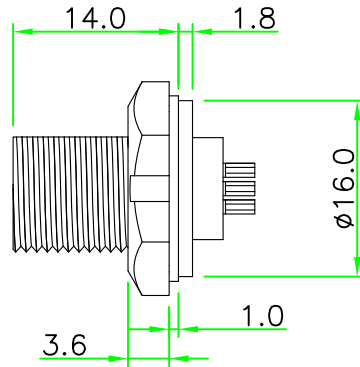


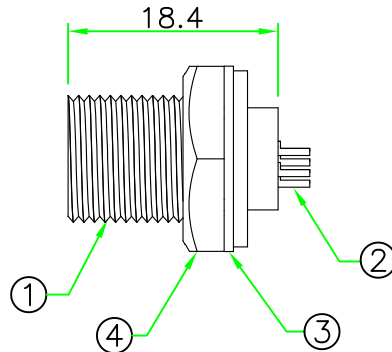
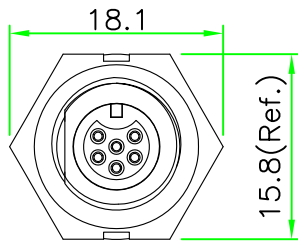
REV	DESCRIPTION	DATE
A	ISSUE	Apr/22/2014



PANEL CUT-OUT  
RECOMMENDED



**RoHS**  
**IP67**



**NOTES:**

**1. ELECTRICAL CHARACTERISTICS:**

CURRENT RATING: 2A / 5A

CONNECTOR TEMPERATURE RANGE: -40°C TO +105°C

DIELECTRIC WITHSTANDING VOLTAGE:

500V AC FOR ONE MINUTE

**2. HOW TO ORDER: CA<sub>x</sub>-P3<sub>xx</sub>CSR**

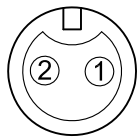
02 - 2 PIN 05 - 5 PIN

03 - 3 PIN 06 - 6 PIN

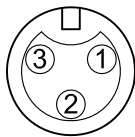
04 - 4 PIN

D - CURRENT RATING 5A

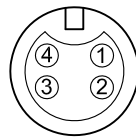
N - CURRENT RATING 2A



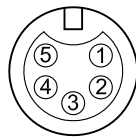
CAD-P302CSR



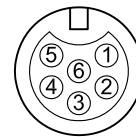
CAD-P303CSR



CAN-P304CSR



CAN-P305CSR



CAN-P306CSR

Pin Assignment Front View

**HOLIN<sup>®</sup> HTP ASIA TECHNOLOGY CO., LTD.**  
**禾凌科技股份有限公司**

4	HEX NUT	NYLON+GF.	BLACK	1	
3	GASKET	EPDM, BLACK	BLACK	1	
2	CONTACT	BRASS. FEMALE PIN. 6u" GOLD PLATED.		N	
1	CONNECTOR	CONNECTOR BODY, NYLON+GF.	BLACK	1	
No.	PART NAME	DESCRIPTION	COLOR	Q'TY	REMARKS

	UNIT: mm	TITLE	Circular A Size Male Connector Female Pin Screw Type Rear Mount Round Flange Solder Bucket Pin	
	SCALE	1.5:1		
UNLESS OTHERWISE SPECIFIED TOLERANCES:		P/N:	CA <sub>x</sub> -P3 <sub>xx</sub> CSR	
x ± 0.2	xx ± 0.1	DR.	Patty	
xxx ± xxx	ANGLE ±	CH.	ERIC	
REV. A	SHEET 1/1	DWG.NO:	CA <sub>x</sub> -P3 <sub>xx</sub> CSR	