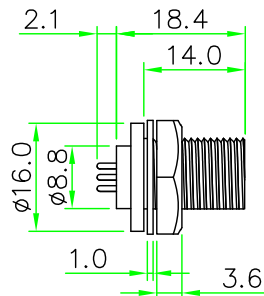
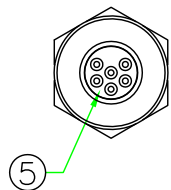


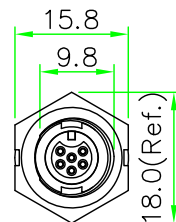
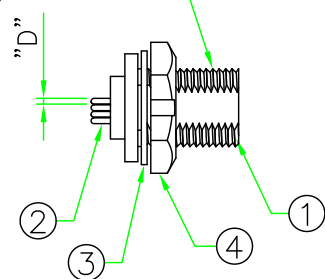
RECOMMENDED
PANEL CUT OUT

RoHS
IP66~68

P/N	D
CAD	∅1.0
CAN	∅0.8

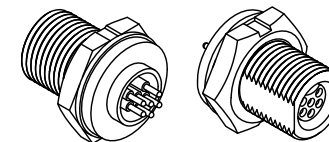


7/16"-28UNS



REV.	DESCRIPTION	DATE
A	ISSUE	Sep/22/2015

Ref.

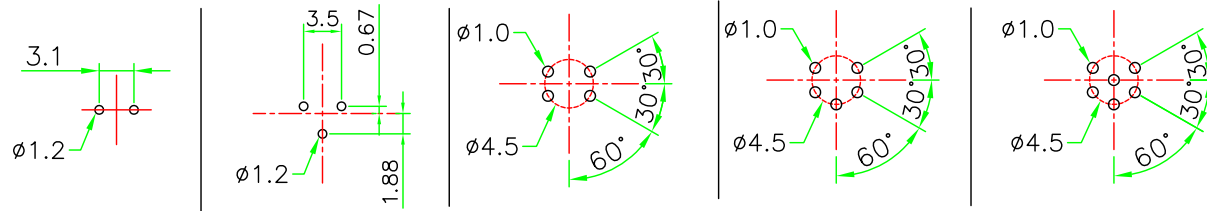


NOTES:

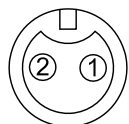
- ELECTRICAL CHARACTERISTICS:
CURRENT RATING: 2A / 5A
CONNECTOR TEMPERATURE RANGE: -25°C TO +85°C
DIELECTRIC WITHSTANDING VOLTAGE:
500V AC FOR ONE MINUTE
- PANEL THICKNESS MAX. 4.5mm
- HOW TO ORDER: CAx-P3xxCPR

- 02 - 2 PIN
- 03 - 3 PIN
- 04 - 4 PIN
- 05 - 5 PIN
- 06 - 6 PIN

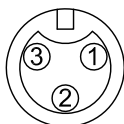
- D - CURRENT RATING 5A
- N - CURRENT RATING 2A



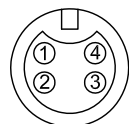
PCB LAYOUT



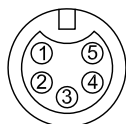
CAD-P302CPR



CAD-P303CPR



CAN-P304CPR



CAN-P305CPR



CAN-P306CPR

Pin Assignment Front View
(前視圖)

HOLIN® HTP ASIA TECHNOLOGY CO., LTD.
禾凌科技股份有限公司

	UNIT: mm	TITLE : Circular A Size Male Connector Female Pin Rear Mount Screw Type Round Flange PCB Pin	
SCALE	1:1	P/N: CAx-P3xxCPR	DR. Patty
UNLESS OTHERWISE SPECIFIED TOLERANCES: .x ± 0.5 .xx ± 0.25 .xxx ± 0.1 ANGLE ± 1'			CH. ERIC
REV. A	SHEET 1/1	DWG.NO: CAx-P3xxCPR	AP.

5	GLUE	EPOXY.	BLACK		
4	HEX NUT	NYLON+GF.	BLACK	1	
3	GASKET	EPDM.	BLACK	1	
2	CONTACT	Brass, 6 u" Gold Plated. Female Contact.		N	
1	CONNECTOR	A Size Male Connector Insert. NYLON+GF.	BLACK	1	
No.	PART NAME	DESCRIPTION	COLOR	Q'TY	REMARKS