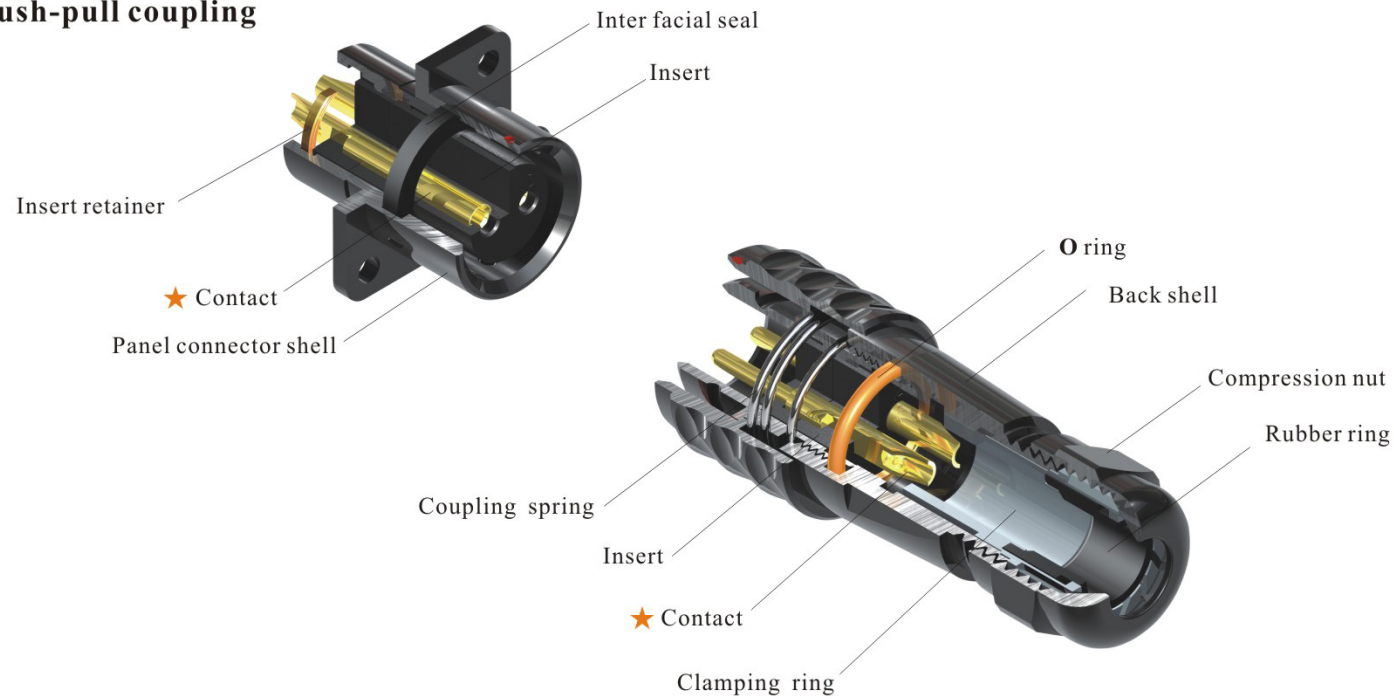






- SA Series IP67
- Push-pull coupling



★ Each side can be male or female contact

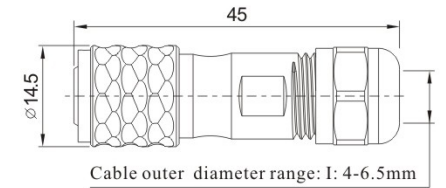
**Material and spec**

Coupling	Push-pull
Shell material	Anodized aluminium
Insert material	PPS, max temperature 260 °C
Contact material	Brass with gold plating
Termination	Solder: SA10, SA12, SA16, SA20, SA28 Crimp: SA16, SA20, SA28 Screw: SA20, SA28 (∅2.5, ∅3.5mm contact)
IP rating	IP67
Mating cycle	500
Temperature range	-40°C~+85°C
Insulation resistance (MΩ)	2000

**SA10 Series**



**Cable connector**  
Mate with SA1011, SA1012

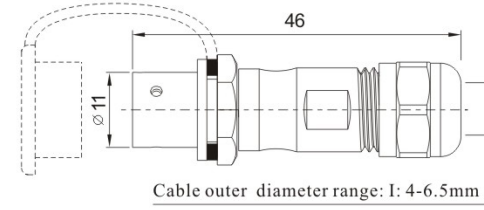


SA1010 / P — SA1010 / S  
Number of contact  
Cable outer diameter: I: 4-6.5mm

Colour:  
B: Black  
S: Silver  
L: Blue  
G: Green  
R: Red } special order



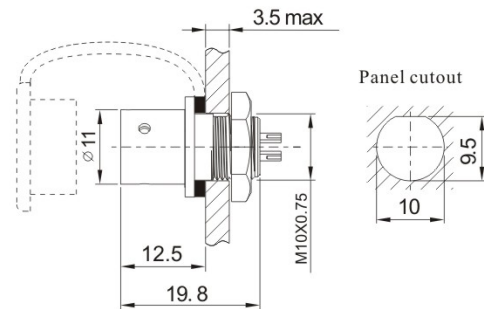
**In-line cable connector**  
Mate with SA1010



SA1011 / P — SA1011 / S



**Rear-nut mount**  
Mate with SA1010



SA1012 / P — SA1012 / S  
Number of contact

Colour:  
B: Black  
S: Silver  
L: Blue  
G: Green  
R: Red } special order

**Solder contact spec**

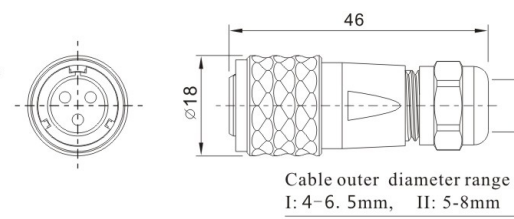
Number of contact	2	3	4	5
Male contact face view				
Rated current (A)	5	5	3	3
Contact diameter (mm)	1	1	0.7	0.7
Rated voltage (AC.V)	180	180	125	125
Test voltage(AC.V) 1 min	1000	1000	1000	1000
Contact resistance (mΩ)	5	5	10	10
Wire size (mm <sup>2</sup> / AWG)	≤0.785/18	≤0.785/18	≤0.785/18	≤0.785/18

## SA12 Series

**SA  
12**



**Cable connector**  
Mate with SA1211, SA1212, SA1213

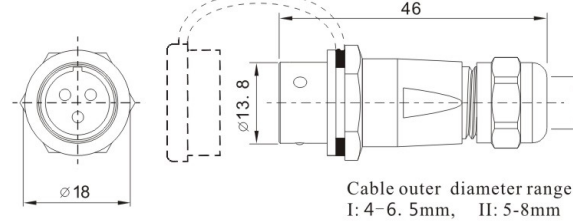


SA1210/P --- SA1210/S  
Number of contact  
Cable outer diameter  
I: 4-6.5mm, II: 5-8mm

Colour:  
B: Black  
S: Silver  
L: Blue  
G: Green } special order  
R: Red



**In-line cable connector**  
Mate with SA1210

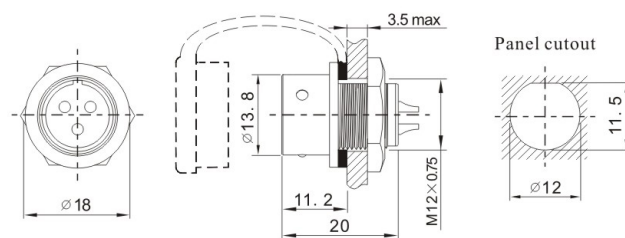


SA1211/P --- SA1211/S

Cable outer diameter range  
I: 4-6.5mm, II: 5-8mm



**Rear-nut mount**  
Mate with SA1210

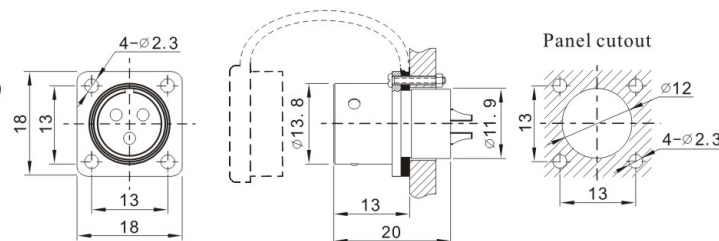


SA1212/P --- SA1212/S  
Number of contact

Colour:  
B: Black  
S: Silver  
L: Blue  
G: Green } special order  
R: Red



**Square flange**  
Mate with SA1210



SA1213/P --- SA1213/S

### Solder contact spec

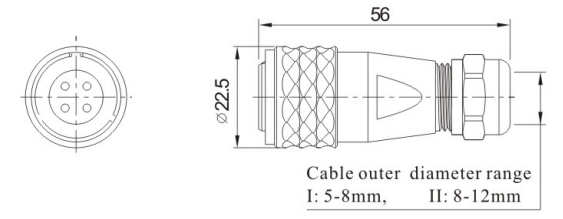
Number of contact	2	3	4	5	6	7	9
Male contact face view							
Rated current (A)	13	13	5	5	5	5	3
Contact diameter (mm)	1.6	1.6	1	1	1	1	0.7
Rated voltage (AC.V)	250	250	200	180	125	125	125
Test voltage(AC.V) 1 min	1500	1500	1500	1000	1000	1000	1000
Contact resistance (mΩ)	2	2	5	5	5	5	10
Wire size (mm <sup>2</sup> / AWG)	≤2/14	≤2/14	≤0.785/18	≤0.785/18	≤0.785/18	≤0.785/18	≤0.785/18

## SA16 Series

**SA  
16**



**Cable connector**  
Mate with SA1611, SA1612, SA1613

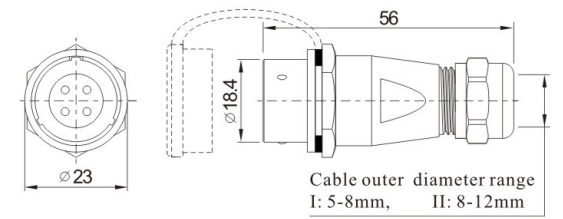


SA1610/P --- SA1610/S  
Number of contact  
Cable outer diameter  
I: 5-8mm, II: 8-12mm

I: solder, 3: crimp  
Colour:  
B: Black  
S: Silver  
L: Blue  
G: Green } special order  
R: Red



**In-line cable connector**  
Mate with SA1610

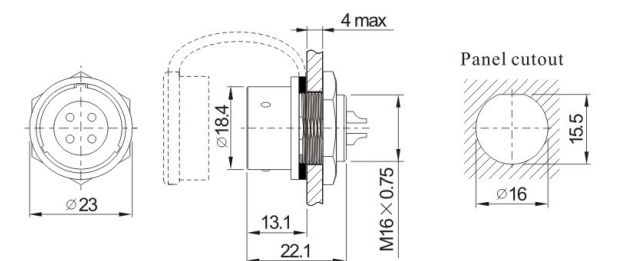


SA1611/P --- SA1611/S

Cable outer diameter range  
I: 5-8mm, II: 8-12mm



**Rear-nut mount**  
Mate with SA1610

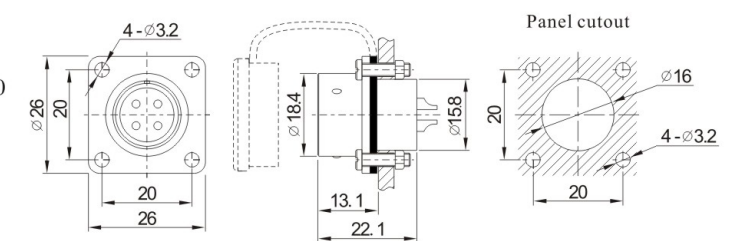


SA1612/P --- SA1612/S  
Number of contact

I: solder, 3: crimp  
Colour:  
B: Black  
S: Silver  
L: Blue  
G: Green } special order  
R: Red



**Square flange**  
Mate with SA1610



SA1613/P --- SA1613/S

### Solder contact spec

★ Crimp contact spec see page 77-80

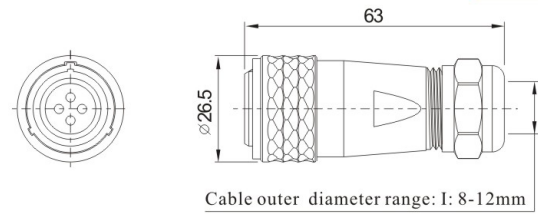
Number of contact	2	3	4	5	7	9	10
Male contact face view							
Rated current (A)	10	10	5	5	5	5	5
Contact diameter (mm)	1.5	1.5	1	1	1	1	1
Rated voltage (AC.V)	500	500	500	500	400	400	400
Test voltage(AC.V) 1 min	1500	1500	1500	1500	1200	1200	1200
Contact resistance (mΩ)	2.5	2.5	5	5	5	5	5
Wire size (mm <sup>2</sup> / AWG)	≤2/14	≤2/14	≤0.785/18	≤0.785/18	≤0.785/18	≤0.785/18	≤0.785/18

## SA20 Series

**SA  
20**



**Cable connector**  
Mate with SA2011, SA2012, SA2013

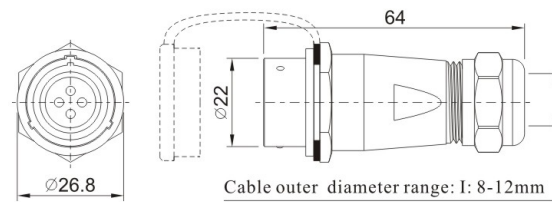


SA2010/P --- SA2010/S

Number of contact  
Cable outer diameter: I: 8-12mm  
1: solder, 2: screw, 3: crimp  
Colour:  
B: Black  
S: Silver  
L: Blue  
G: Green  
R: Red } special order



**In-line cable connector**  
Mate with SF2010

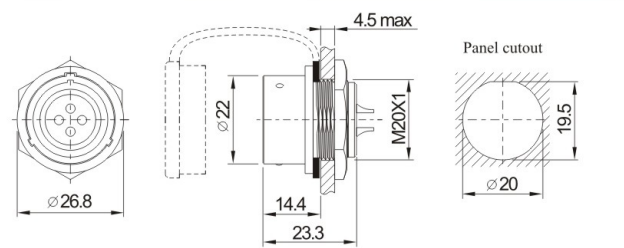


SA2011/P --- SA2011/S

Cable outer diameter range: I: 8-12mm



**Rear-nut mount**  
Mate with SA2010

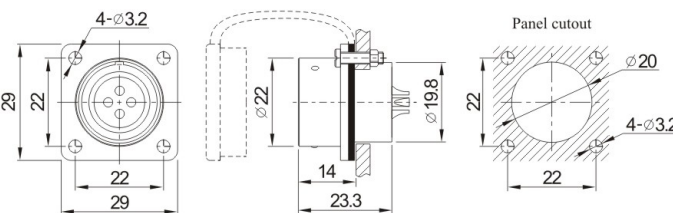


SA2012/P --- SA2012/S

Number of contact  
1: solder, 2: screw, 3: crimp  
Colour:  
B: Black  
S: Silver  
L: Blue  
G: Green  
R: Red } special order



**Square flange**  
Mate with SA2010



SA2013/P --- SA2013/S

### Solder contact spec

★ Crimp contact spec see page 77-80

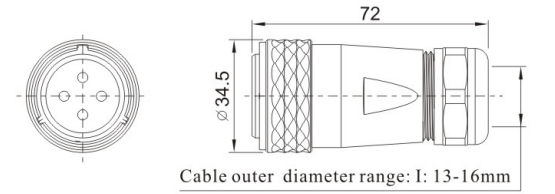
Number of contact	2	3	4	5	6	7	9	12
Male contact face view								
Rated current (A)	25	25	25	10	25 5	10	5	5
Contact diameter (mm)	2.5	2.5	2.5	1.5	2.5X4 1X2	1.5	1	1
Rated voltage (AC.V)	500	500	500	500	500	500	500	400
Test voltage(AC.V) 1 min	1500	1500	1500	1500	1500	1500	1500	1200
Contact resistance (mΩ)	1	1	1	2.5	1 5	2.5	5	5
Termination	solder / screw	solder / screw	solder / screw	solder	solder	solder	solder	solder
Wire size for solder (mm <sup>2</sup> / AWG)	≤4/11	≤4/11	≤4/11	≤2/14	≤4/11 ≤0.785/18	≤2/14	≤0.785/18	≤0.785/18
Wire size for screw termination (mm <sup>2</sup> / AWG)	≤1.5/15	≤1.5/15	≤1.5/15	/	/	/	/	/

## SA28 Series

**SA  
28**



**Cable connector**  
Mate with SA2811, SA2812, SA2813

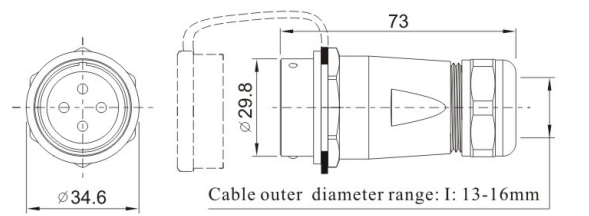


SA2810/P --- SA2810/S

Number of contact  
Cable outer diameter: I: 13-16mm  
1: solder, 2: screw, 3: crimp  
Colour:  
B: Black  
S: Silver  
L: Blue  
G: Green  
R: Red } special order



**In-line cable connector**  
Mate with SA2810

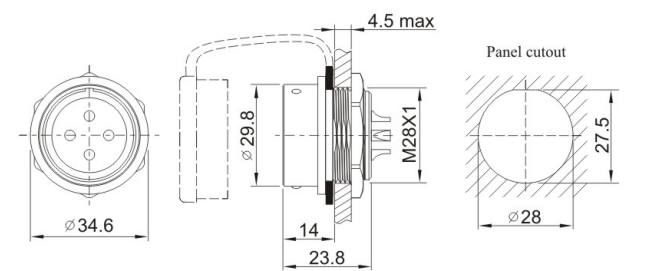


SA2811/P --- SA2811/S

Cable outer diameter range: I: 13-16mm



**Rear-nut mount**  
Mate with SA2810

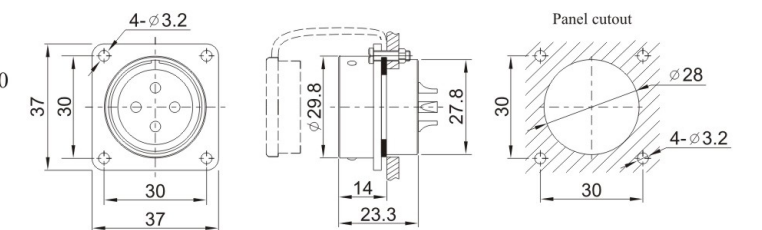


SA2812/P --- SA2812/S

Number of contact  
1: solder, 2: screw, 3: crimp  
Colour:  
B: Black  
S: Silver  
L: Blue  
G: Green  
R: Red } special order



**Square flange**  
Mate with SA2810



SA2813/P --- SA2813/S

### Solder contact spec

★ Crimp contact spec see page 77-80

Number of contact	2	3	4	7	8	9	10	10B	12	16	17	20	24	26
Male contact face view														
Rated current (A)	50	50	25	25	25	25 5	25	10	10	10	10	5	5	5
Contact diameter(mm)	3.5	3.5	2.5	2.5	2.5	2.5X4 1X5	2.5	1.5	1.5	1.5	1.5	1	1	1
Rated voltage (AC.V)	500	500	500	500	500	500	500	500	500	500	500	400	400	400
Test voltage(AC.V) 1 min	1500	1500	1500	1500	1500	1500	1500	1500	1500	1500	1500	1200	1200	1200
Contact resistance (mΩ)	0.5	0.5	1	1	1	1 5	1	2.5	2.5	2.5	2.5	5	5	5
Termination	solder / screw	solder / screw	solder / screw	solder / screw	solder / screw	solder / screw	solder / screw	solder / screw	solder	solder	solder	solder	solder	solder
Wire size for solder (mm <sup>2</sup> / AWG)	≤10/7	≤10/7	≤4/11	≤4/11	≤4/11	≤4/11 ≤0.785/18	≤4/11	≤2/14	≤2/14	≤2/14	≤2/14	≤0.785/18	≤0.785/18	≤0.785/18
Wire size for screw termination (mm <sup>2</sup> / AWG)	≤6/10	≤6/10	≤1.5/15	≤1.5/15	≤1.5/15	/	≤1.5/15	/	/	/	/	/	/	/



**IP67**

**SA Series**





**B.C.E. S.r.l.** - Via Regina Pacis, 54/c - I 41049 Sassuolo (MO), Italy

Tel: (+39) 0536 811616 Fax: (+39) 0536 811500 E-mail: [bce@bce.it](mailto:bce@bce.it) Web: [www.bce.it](http://www.bce.it)

