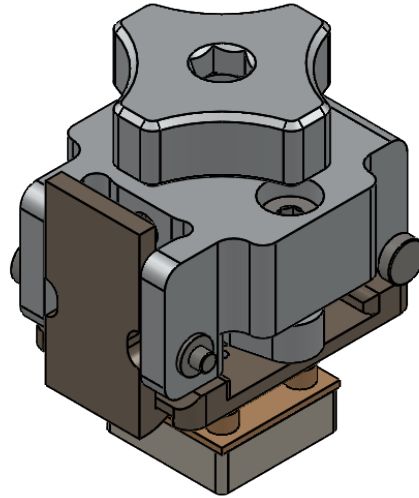
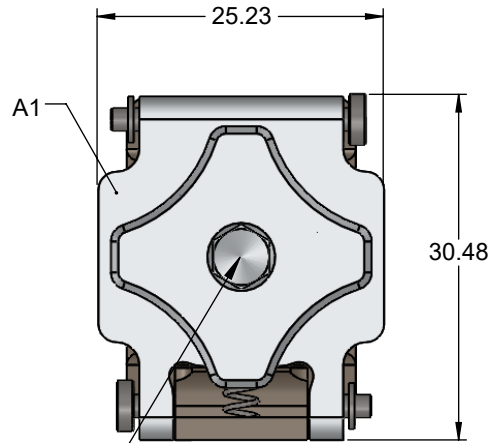


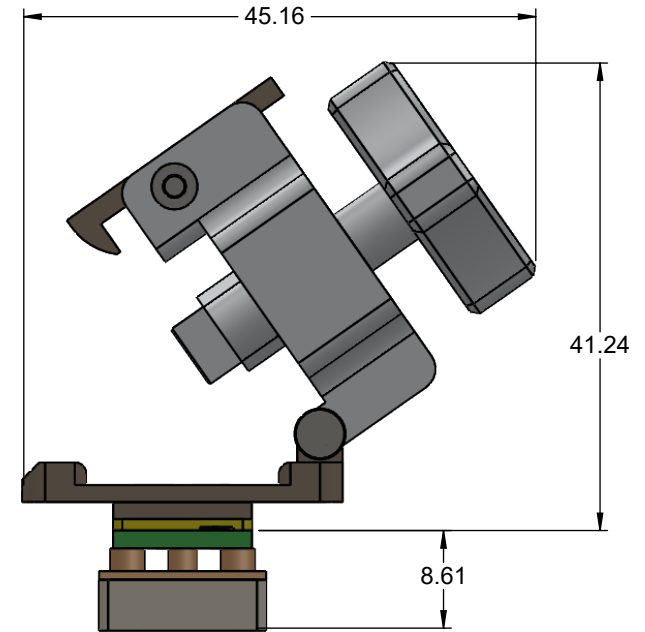
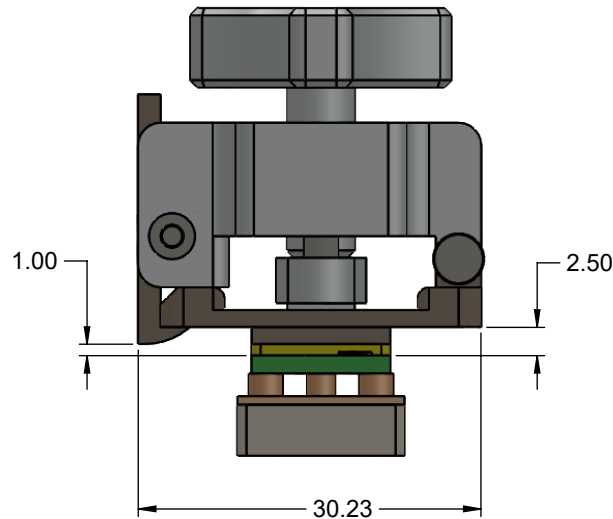
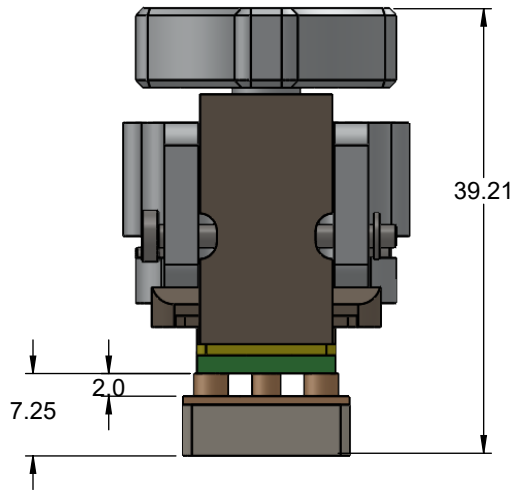
GT Socket - Direct mount, solderless



Features

- Directly mounts to target PCB (needs tooling holes) with hardware
- Minimum real estate required
- Compression plate distributes evenly
- Clamshell lid


REQUIRED TORQUE: 4.3 - 5.7 Ncm (0.38 - 0.5 lbf in)
RECOMMENDED TOOL: TL-TORQUEDRIVER-09

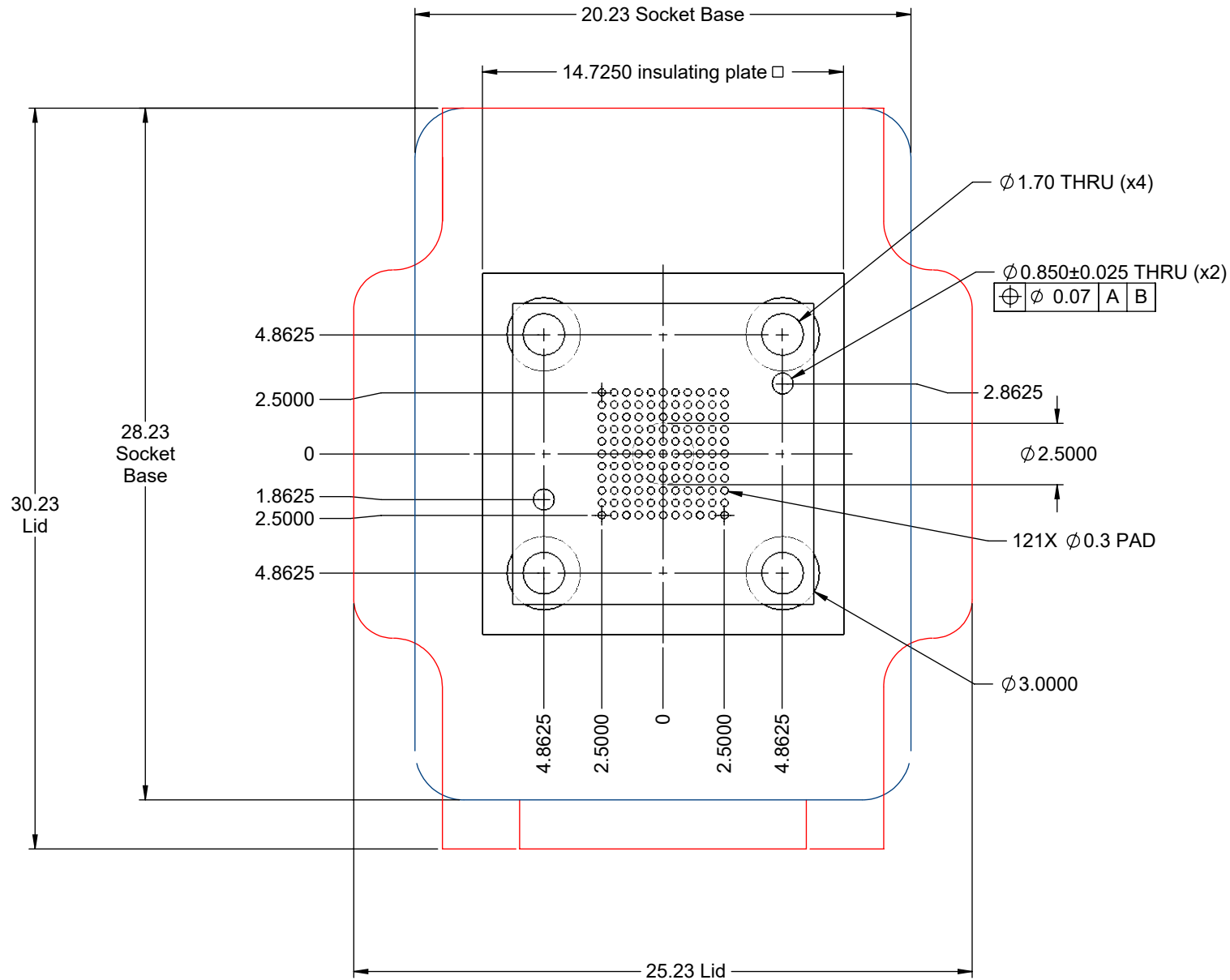


Description: Custom Socket

Primary dimension units are millimeters, Secondary dimension units are [inches], Weight is in grams.

Tolerances: Hole diameters $\pm 0.03\text{mm}$ [$\pm 0.001"$], Pitches (from true position) $\pm 0.025\text{mm}$ [$\pm 0.001"$], substrate thickness tolerance $\pm 10\%$, all other tolerances $\pm 0.13\text{mm}$ [$\pm 0.005"$] unless stated otherwise. Materials and specifications are subject to change without notice.


 <p>GT-BGA-2082 Drawing Ironwood Electronics, Inc. Tele: (800) 404-0204 www.ironwoodelectronics.com</p>	<p>Material: N/A Finish: N/A Weight: 37.08</p>	<p>STATUS: Quality Approval Pending</p>	<p>SHEET: 1 OF 5</p>	<p>REV. -.01</p>
	<p>ENG: M. Raske</p>	<p>DRAWN BY: M. Raske</p>	<p>SCALE: 3:2</p>	<p>DATE: 06/13/2018</p>
<p>FILE: GT-BGA-2082 Dwg</p>				

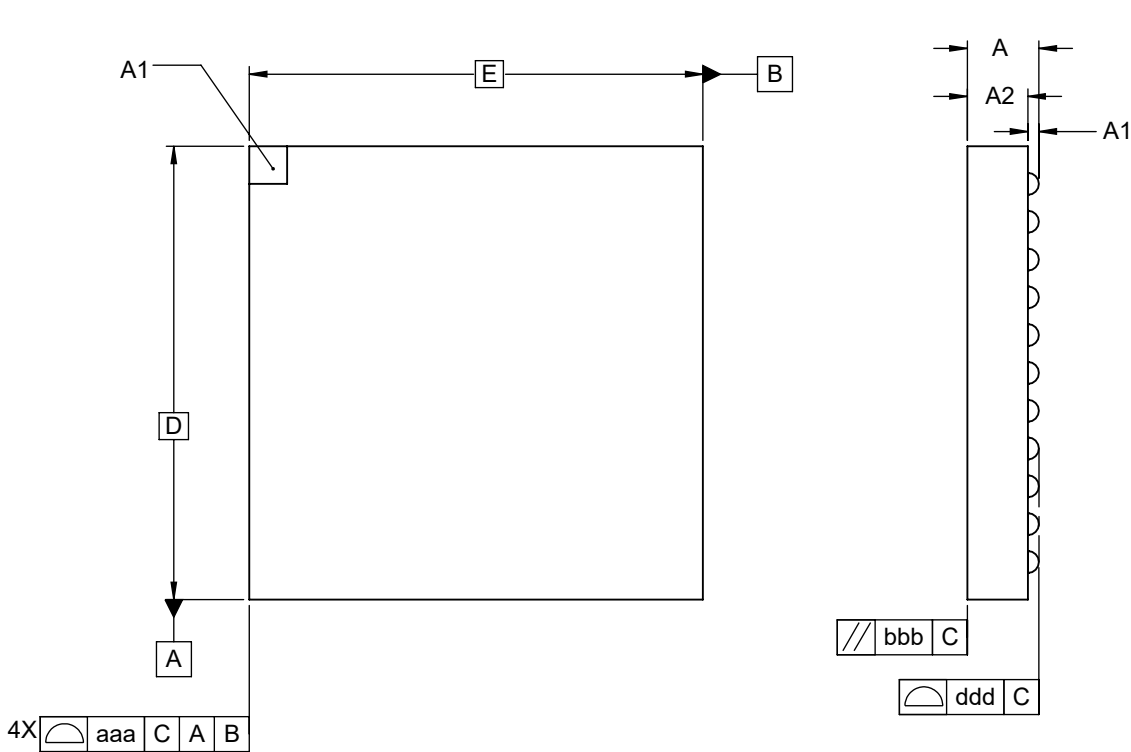


Description: Recommended PCB Layout

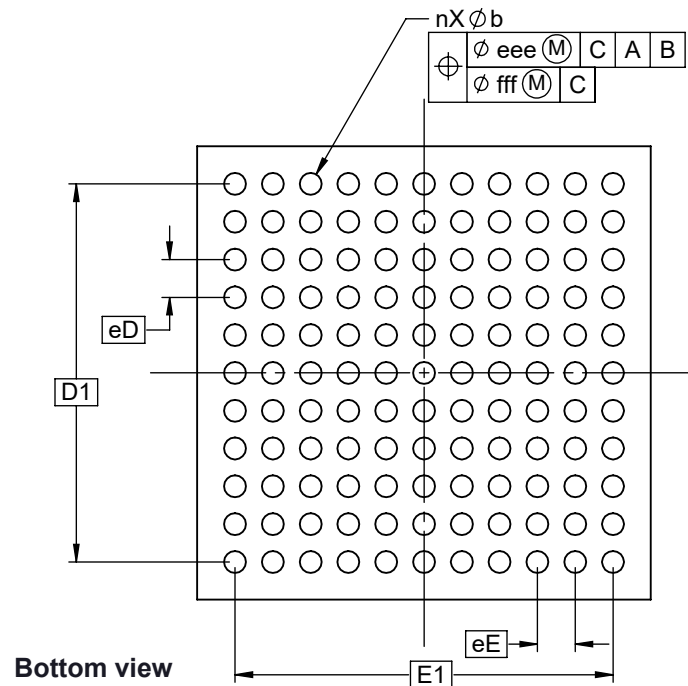
Primary dimension units are millimeters, Secondary dimension units are [inches], Weight is in grams.

Tolerances: Hole diameters $\pm 0.03\text{mm}$ [$\pm 0.001"$], Pitches (from true position) $\pm 0.025\text{mm}$ [$\pm 0.001"$], substrate thickness tolerance $\pm 10\%$, all other tolerances $\pm 0.13\text{mm}$ [$\pm 0.005"$] unless stated otherwise. Materials and specifications are subject to change without notice.

 GT-BGA-2082 Drawing Ironwood Electronics, Inc. Tele: (800) 404-0204 www.ironwoodelectronics.com	Material: N/A Finish: N/A Weight: 37.08	STATUS: Quality Approval Pending	SHEET: 2 OF 5	REV. -.01
		ENG: M. Raske	DRAWN BY: M. Raske	SCALE: 4:1
		FILE: GT-BGA-2082 Dwg	DATE: 06/13/2018	



Top view



Bottom view


Ironwood package code: **BGA121H**

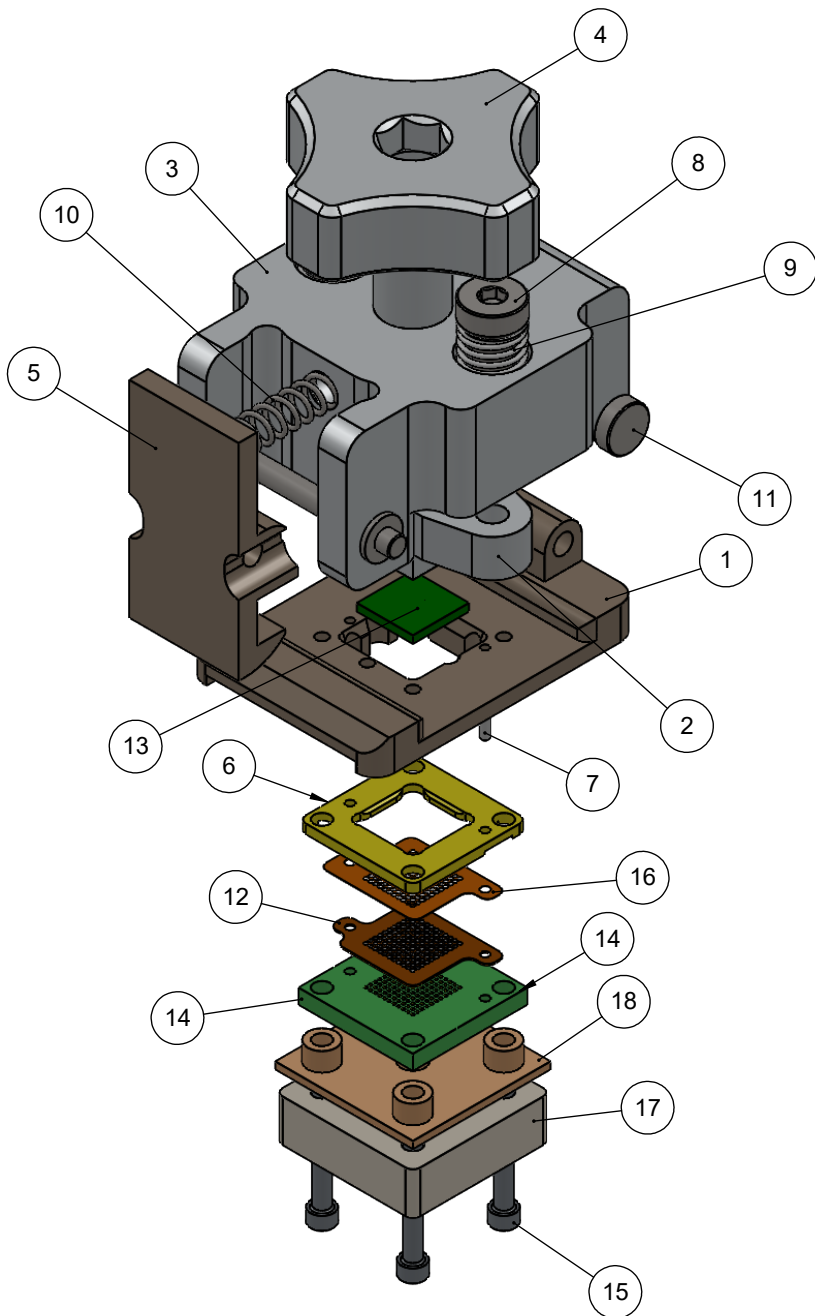
	MIN	NOM	MAX
A	0.800	0.900	1.000
A1	0.100	0.145	0.190
A2			0.85
D		6.00	
D1		5.00	
E		6.00	
E1		5.00	
n		121	
b	0.240	0.290	0.340
eD		0.50	
eE		0.50	
aaa		0.15	
bbb		0.20	
ddd		0.08	
eee		0.15	
fff		0.05	

Description: Compatible BGA

Primary dimension units are millimeters, Secondary dimension units are [inches], Weight is in grams.

Tolerances: Hole diameters $\pm 0.03\text{mm}$ [$\pm 0.001"$], Pitches (from true position) $\pm 0.025\text{mm}$ [$\pm 0.001"$], substrate thickness tolerance $\pm 10\%$, all other tolerances $\pm 0.13\text{mm}$ [$\pm 0.005"$] unless stated otherwise. Materials and specifications are subject to change without notice.

 GT-BGA-2082 Drawing Ironwood Electronics, Inc. Tele: (800) 404-0204 www.ironwoodelectronics.com	Material: N/A Finish: N/A Weight: 37.08	STATUS: Quality Approval Pending	SHEET: 3 OF 5	REV. -.01
		ENG: M. Raske	DRAWN BY: M. Raske	SCALE: 10:1
		FILE: GT-BGA-2082 Dwg	DATE: 06/13/2018	




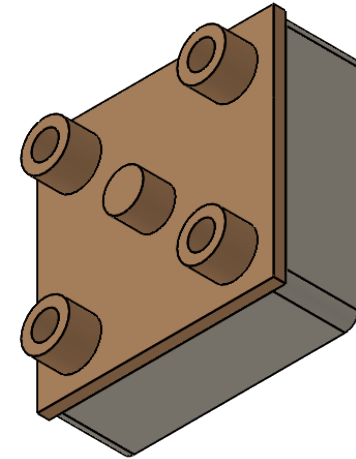
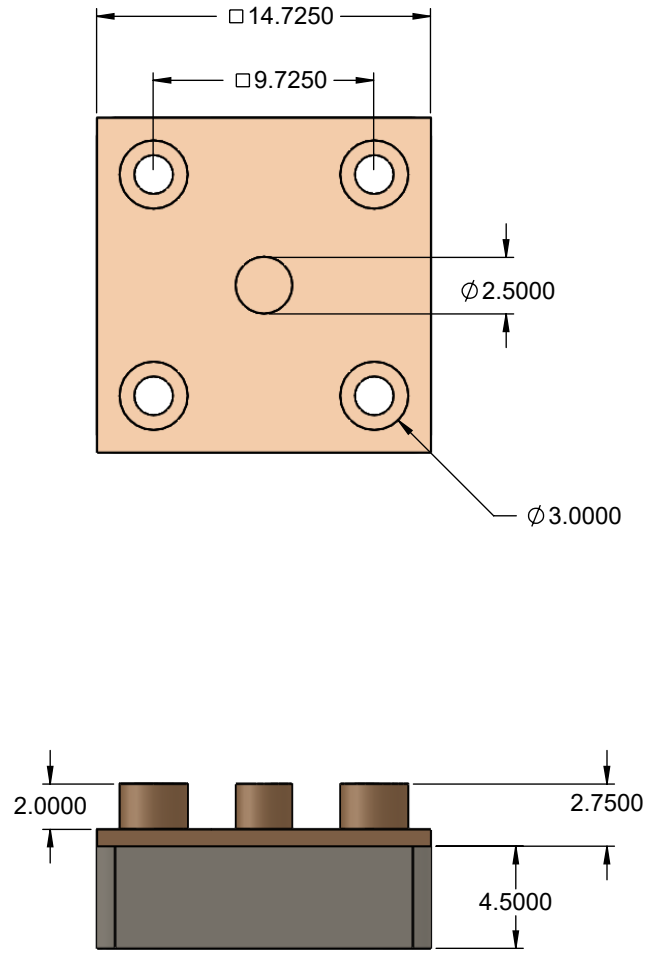
ITEM NO.	DESCRIPTION	Material
1	CBT Socket base 7mm	7075-T6 Aluminum Alloy
2	Compression Plate 6mm sq	7075-T6 Aluminum Alloy
3	Clam Shell Lid	7075-T6 Aluminum Alloy
4	Fluted Knob Compression Screw	7075-T6 Aluminum Alloy
5	Latch, Ni plated	7075-T6 Aluminum Alloy
6	GT IC Guide 6x6mm	Torlon 4203
7	Alignment Pin 1/32" dia. x 1/8" lng	Chrome Stainless Steel
8	Screw, M3 x 12mm, Low Head Cap, SS	18-8 Stainless Steel
9	Spring Clamshell lid assembly	Steel Music Wire
10	Precision Compression Spring, Zinc-Plated Music Wire, 1/2" Length, .12" OD, .016" Wire	Zinc Plated Music Wire
11	Hinge Pin and Snap Ring, 2mm OD, 19mm long, SS	Stainless Steel (ferritic)
12	GT BGA121 11x11 array 0.5mm pitch	N/A
13	Test Chip	Material <not specified>
14	Target PCB	FR4 High temp
15	#0-80 X 7/16" LG, SOC HD CAP SCREW	Stainless Steel (304)
16	Ball Guide 0.5mm pitch 11x11array	Kapton Polyimide/Cirlex
17	Clamshell Backing Plate, 7mm IC 4.5 Thick	7075-T6 Aluminum Alloy
18	Insulation Plate 7mm	Ultem 1000

Description: Socket Assy, detail

Primary dimension units are millimeters, Secondary dimension units are [inches], Weight is in grams.

Tolerances: Hole diameters $\pm 0.03\text{mm}$ [$\pm 0.001"$], Pitches (from true position) $\pm 0.025\text{mm}$ [$\pm 0.001"$], substrate thickness tolerance $\pm 10\%$, all other tolerances $\pm 0.13\text{mm}$ [$\pm 0.005"$] unless stated otherwise. Materials and specifications are subject to change without notice.


 GT-BGA-2082 Drawing Ironwood Electronics, Inc. Tele: (800) 404-0204 www.ironwoodelectronics.com	Material: N/A	STATUS: Quality Approval Pending	SHEET: 4 OF 5	REV. -.01
	Finish: N/A	ENG: M. Raske	DRAWN BY: M. Raske	SCALE: 3.5:2
	Weight: 37.08	FILE: GT-BGA-2082 Dwg	DATE: 06/13/2018	



Description: Insulating plate

Primary dimension units are millimeters, Secondary dimension units are [inches], Weight is in grams.

Tolerances: Hole diameters $\pm 0.03\text{mm}$ [$\pm 0.001"$], Pitches (from true position) $\pm 0.025\text{mm}$ [$\pm 0.001"$], substrate thickness tolerance $\pm 10\%$, all other tolerances $\pm 0.13\text{mm}$ [$\pm 0.005"$] unless stated otherwise. Materials and specifications are subject to change without notice.

 GT-BGA-2082 Drawing Ironwood Electronics, Inc. Tele: (800) 404-0204 www.ironwoodelectronics.com	Material: N/A Finish: N/A Weight: 37.08	STATUS: Quality Approval Pending	SHEET: 5 OF 5	REV. -.01
		ENG: M. Raske	DRAWN BY: M. Raske	SCALE: 3:1
		FILE: GT-BGA-2082 Dwg	DATE: 06/13/2018	