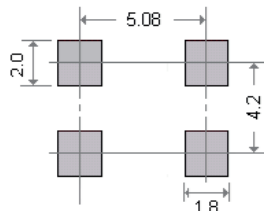
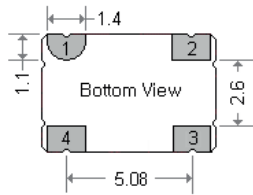
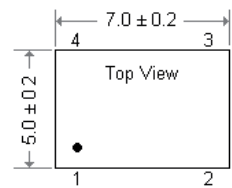


OPTIONS & ORDERING INFORMATION

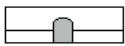
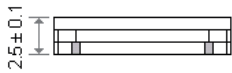
SX7CTQ					MHz
	Supply Voltage *	Operating Temp. *	Temperature Stability *	Tri-state Function	Package type
	25 = +2.5V	F = -20° / +70°C	0.5 = ±0.5 ppm	F = No Tri-state (4-pad)	4P = 4-pad version
	33 = +3.3V	G = -30° / +75°C	1.0 = ±1.0 ppm	E2 = Tri-state , pin 2	6P = 6-pad version
		H = -30° / +85°C	1.5 = ±1.5 ppm		
		K = -40° / +85°C	2.0 = ±2.0 ppm		
			2.5 = ±2.5 ppm		
					Please specify the frequency in MHz

* Note : Not all combinations are possible , please consult us.

OUTLINE DIMENSIONS (MM)

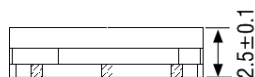
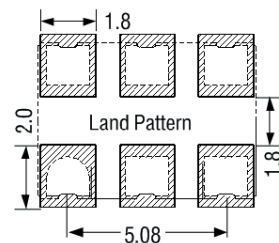
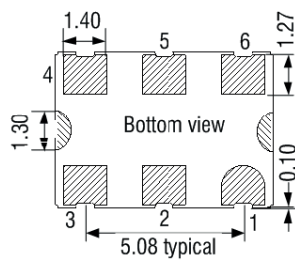
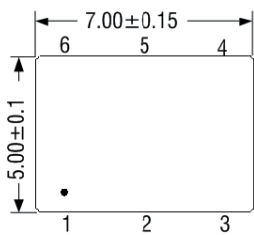


Suggested Land Pattern



Pin Connections

- #1 : NC
- #2 : GND
- #3: Output
- #4 :Vdd



Pin Connections

- #1 : NC
- #2 : E/D
- #3: GND
- #4 : Output
- #5 : NC
- #6 :Vdd