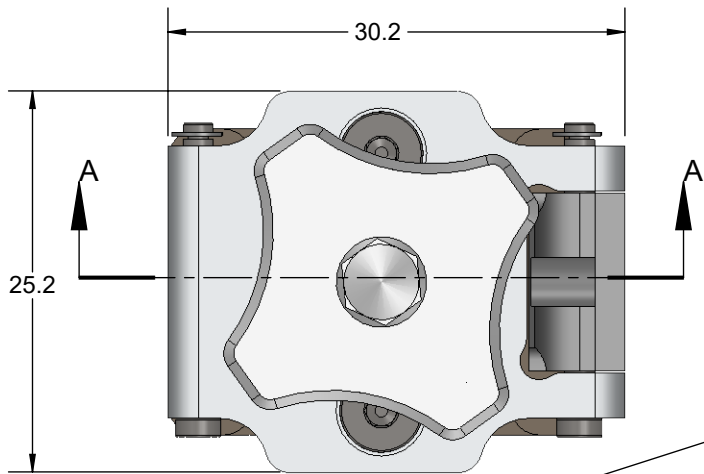


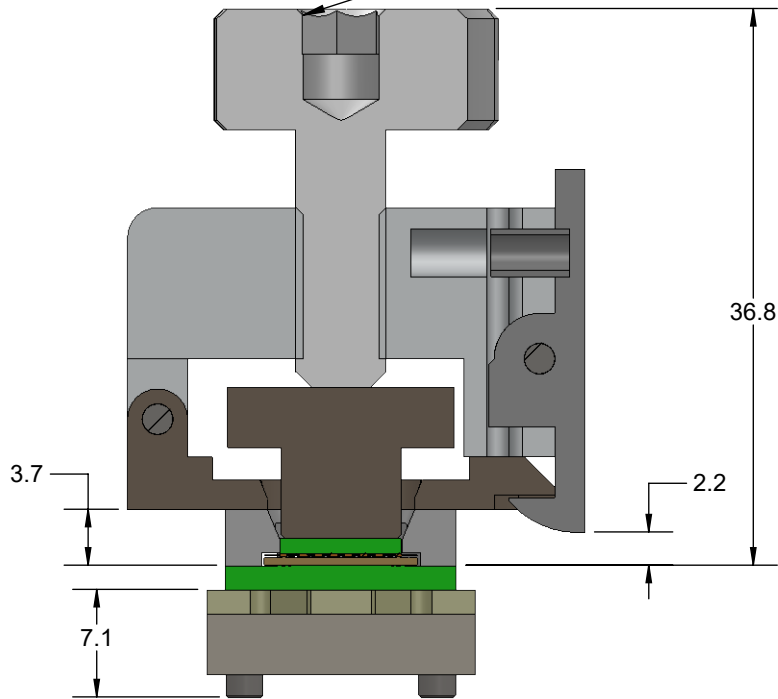
SMP-QFN Socket - Direct mount, solderless



Features

- Directly mounts to target PCB (needs tooling holes) with hardware
- High speed, reliable Elastomer connection
- Minimum real estate required
- Compression plate distributes forces evenly
- Ball guide prevents over compression of elastomer
- Easily removable swivel socket lid

REQUIRED TORQUE:
11.3 N-cm [1.0 lb-in]
RECOMMENDED TOOL: CONTACT IRONWOOD
REMOVE FORCE WHEN NOT TESTING

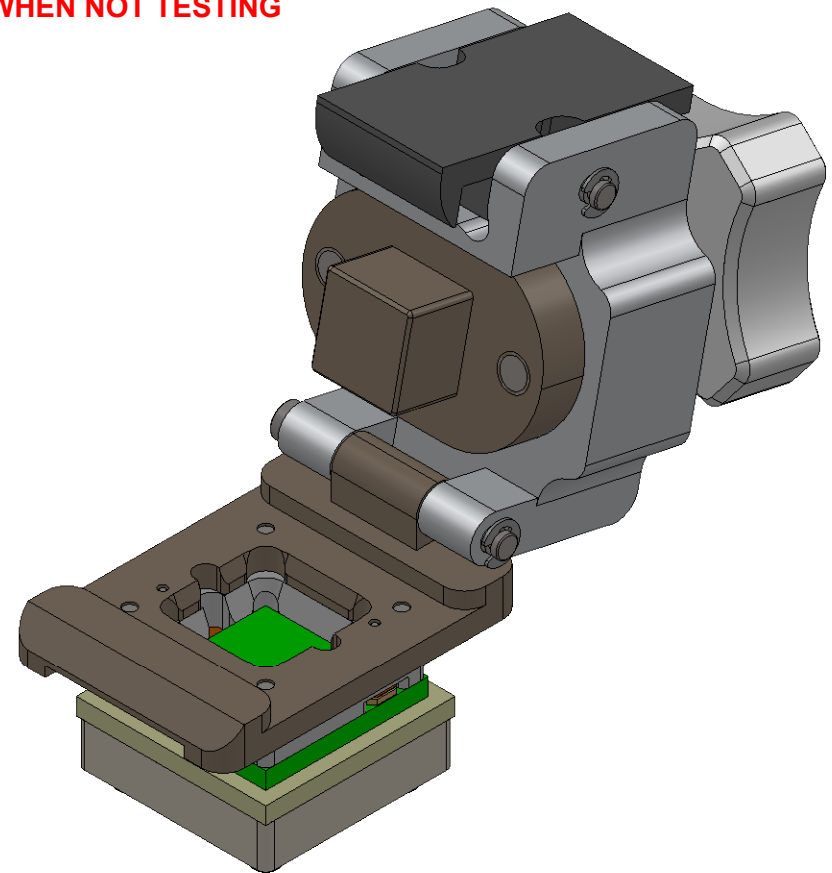



SECTION A-A

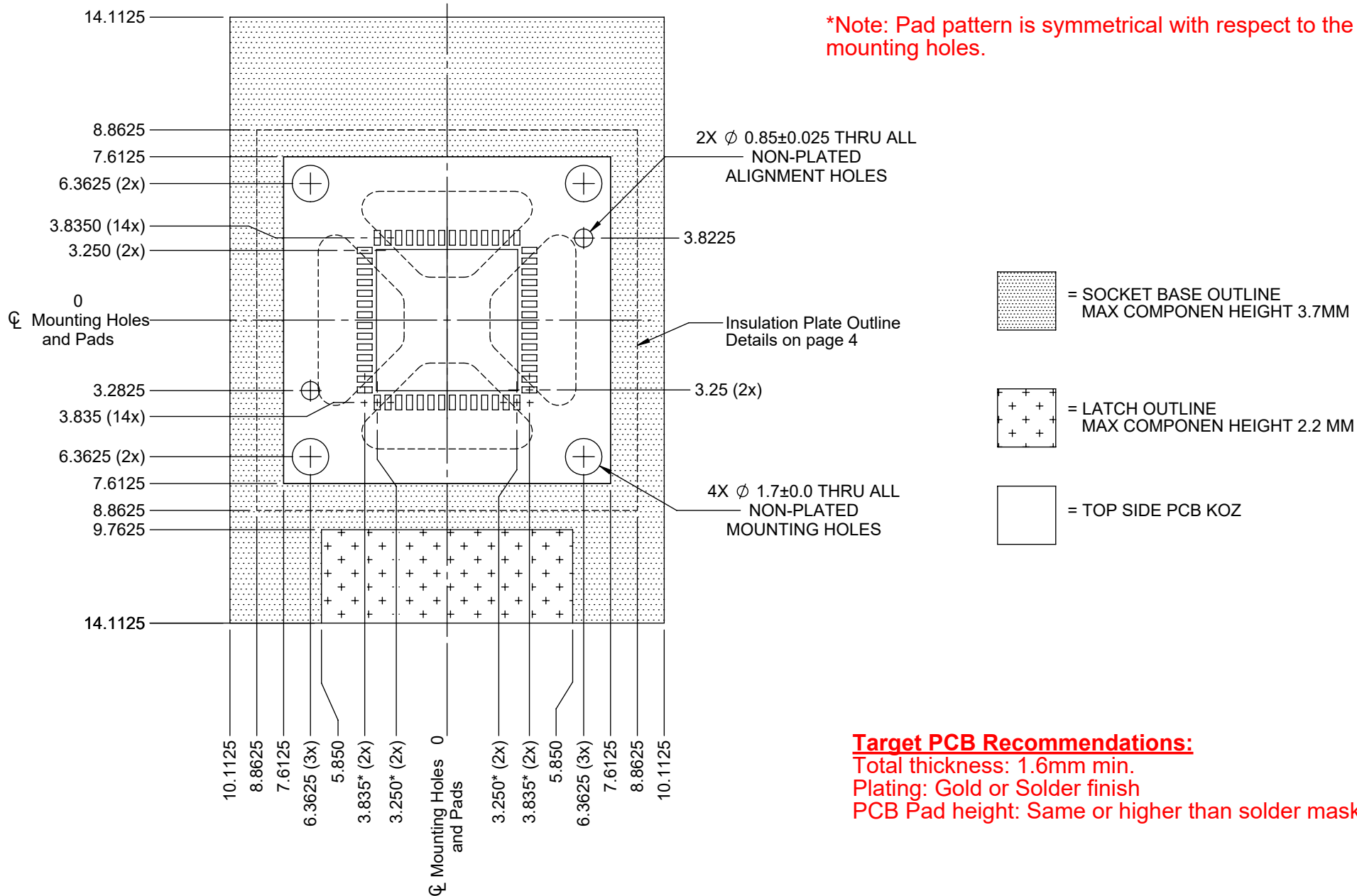
Description: SMP-QFN56A

Primary dimension units are millimeters, Secondary dimension units are [inches], Weight is in grams.

Tolerances: Hole diameters $\pm 0.0254\text{mm}$ [$\pm 0.001"$], Pitches (from true position) $\pm 0.0762\text{mm}$ [$\pm 0.003"$], substrate thickness tolerance $\pm 10\%$, all other tolerances $\pm 0.127\text{mm}$ [$\pm 0.005"$] unless stated otherwise. Materials and specifications are subject to change without notice.



 <p>SMP-QFN-8014 Drawing Ironwood Electronics, Inc. Tele: (800) 404-0204 www.ironwoodelectronics.com</p>	Material: N/A Finish: N/A Weight: 41.87	STATUS: Released ENG: B. Schatz FILE: SMP-QFN-8014 Dwg	SHEET: 1 OF 4 DRAWN BY: M. Raske DATE: 03/01/2016	REV. A SCALE: 2:1




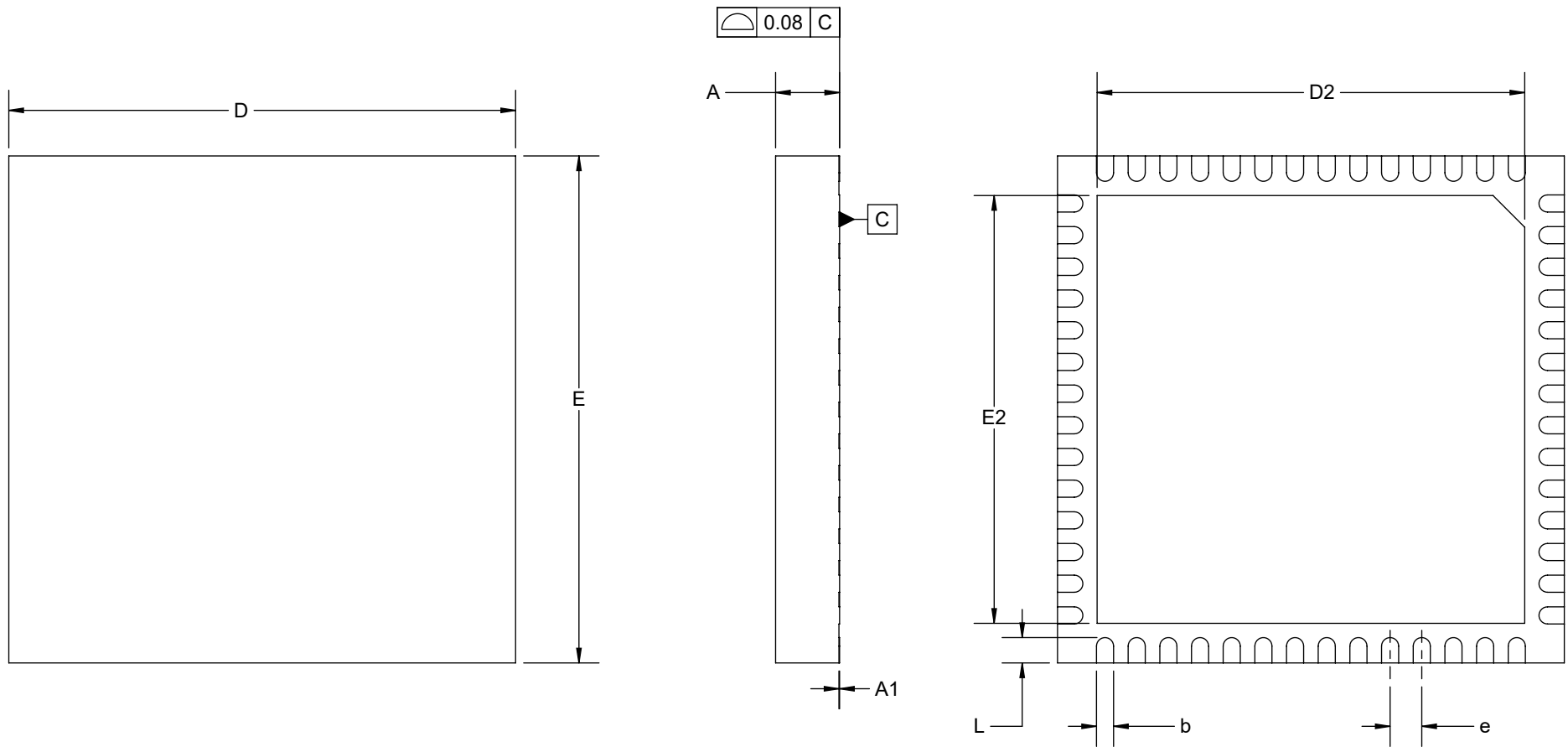
Target PCB Recommendations:
 Total thickness: 1.6mm min.
 Plating: Gold or Solder finish
 PCB Pad height: Same or higher than solder mask

Description: Recommended PCB Layout

Primary dimension units are millimeters, Secondary dimension units are [inches], Weight is in grams.

Tolerances: Hole diameters $\pm 0.03\text{mm}$ [$\pm 0.001"$], Hole and pad positions $\pm 0.025\text{mm}$ [$\pm 0.001"$], substrate thickness tolerance $\pm 10\%$, all other tolerances $\pm 0.13\text{mm}$ [$\pm 0.005"$] unless stated otherwise. Materials and specifications are subject to change without notice.

 C14040 Drawing Ironwood Electronics, Inc. Tele: (800) 404-0204 www.ironwoodelectronics.com	Material: N/A Finish: N/A Weight: 41.87	STATUS: Released	SHEET: 2 OF 4	REV. A
		ENG: B. Schatz	DRAWN BY: M. Raske	SCALE: 4:1
		FILE: SMP-QFN-8014 Dwg	DATE: 03/01/2016	



Dimensions are in millimeters.


1. Interpret dimensions and tolerances per ASME Y14.5M-1994.

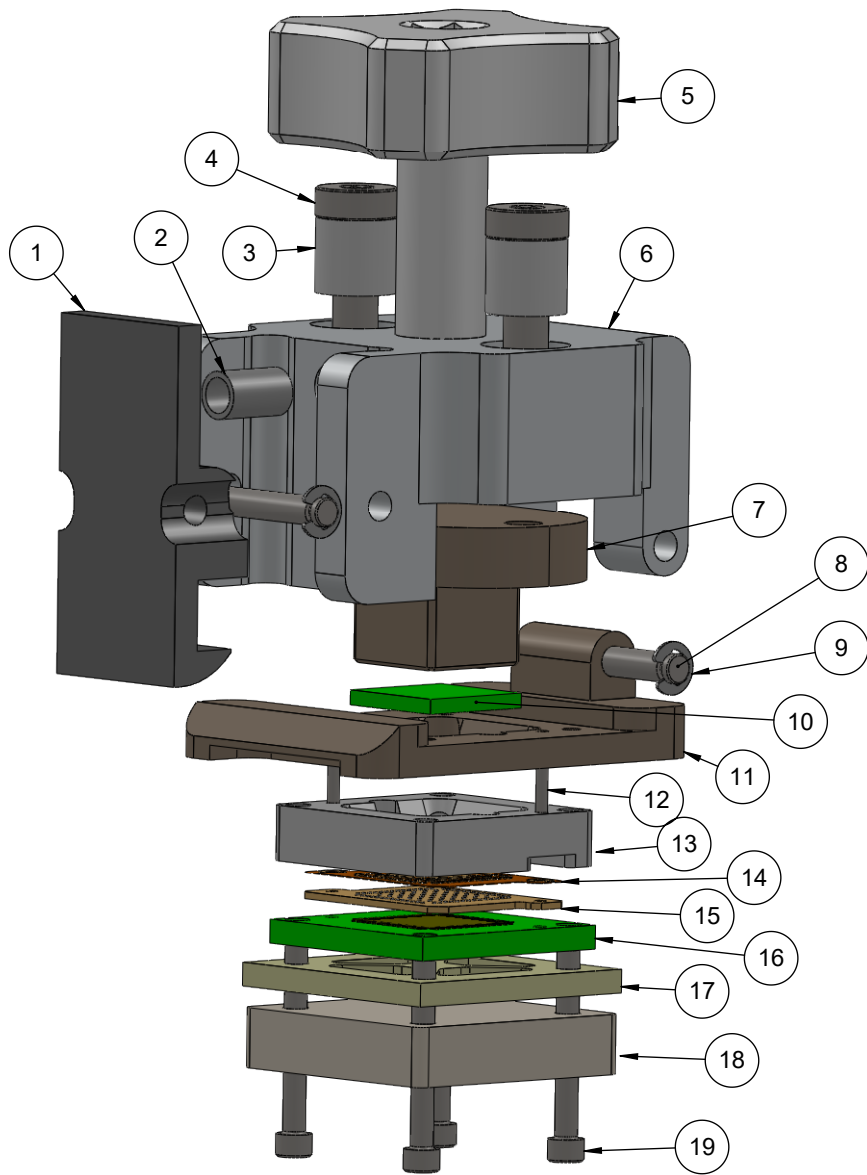
Description: Compatible Device

Primary dimension units are millimeters, Secondary dimension units are [inches], Weight is in grams.

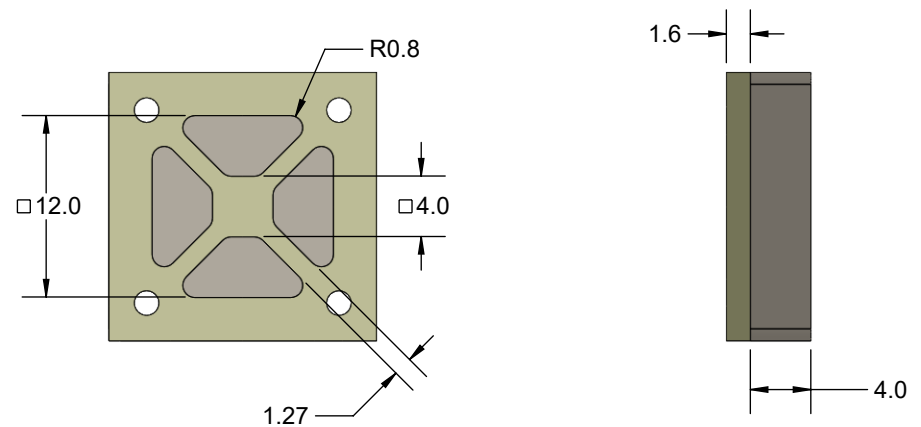
Tolerances: Hole diameters $\pm 0.03\text{mm}$ [± 0.001 "], Pitches (from true position) $\pm 0.025\text{mm}$ [± 0.001 "], substrate thickness tolerance $\pm 10\%$, all other tolerances $\pm 0.13\text{mm}$ [± 0.005 "] unless stated otherwise. Materials and specifications are subject to change without notice.

DIM	MIN	MAX
A	-	0.90
A1	-	0.05
b	0.25	
L	0.40	
D	8.00 BSC	
D2	5.90	
E	8.00 BSC	
E2	5.90	
e	0.50 BSC	

 <p>C14040 Drawing Ironwood Electronics, Inc. Tele: (800) 404-0204 www.ironwoodelectronics.com</p>	<p>Material: N/A Finish: N/A Weight: 41.87</p>	<p>STATUS: Released ENG: B. Schatz FILE: SMP-QFN-8014 Dwg</p>	<p>SHEET: 3 OF 4 DRAWN BY: M. Raske DATE: 03/01/2016</p>	<p>REV. A SCALE: 10:1</p>



ITEM NO.	DESCRIPTION	Material
1	Latch	Aluminum
2	Latch Spring	Steel
3	Lid Spring	Steel
4	Lid Screw	Steel
5	Compression Screw	Aluminum
6	Lid	Aluminum
7	Compression Plate	Aluminum
8	Hinge Pin	Steel
9	Snap Ring	Steel
10	Compatible Device	N/A
11	Socket Base	Aluminum
12	Alignment Pin	Steel
13	IC Guide	High temp plastic
14	Protective layer	Gold plated pads
15	Contactor layer	Silver ball columns in silicon rubber
16	Target PCB	N/A
17	Insulation Plate	High temp plastic
18	Backing Plate	Aluminum
19	Mounting Screw	Steel




INSULATION AND BACKING PLATE DETAIL

Description: Socket, Backing Plate Detail

Primary dimension units are millimeters, Secondary dimension units are [inches], Weight is in grams.

Tolerances: Hole diameters $\pm 0.03\text{mm}$ [± 0.001 "], Pitches (from true position) $\pm 0.025\text{mm}$ [± 0.001 "], substrate thickness tolerance $\pm 10\%$, all other tolerances $\pm 0.13\text{mm}$ [± 0.005 "] unless stated otherwise. Materials and specifications are subject to change without notice.

 C14040 Drawing Ironwood Electronics, Inc. Tele: (800) 404-0204 www.ironwoodelectronics.com	Material: N/A Finish: N/A Weight: 41.87	STATUS: Released ENG: B. Schatz FILE: SMP-QFN-8014 Dwg	SHEET: 4 OF 4 DRAWN BY: M. Raske DATE: 03/01/2016	REV. A SCALE: 2:1