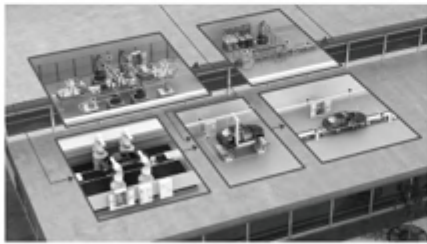


Splitter & Junction box



Industrial connectivities

B.C.E. s.r.l.

Via Regina Pacis, 54/c - 41049 SASSUOLO (MO) Italy

Tel. +39 0536 811.616 r.a. - Fax +39 0536 811.500

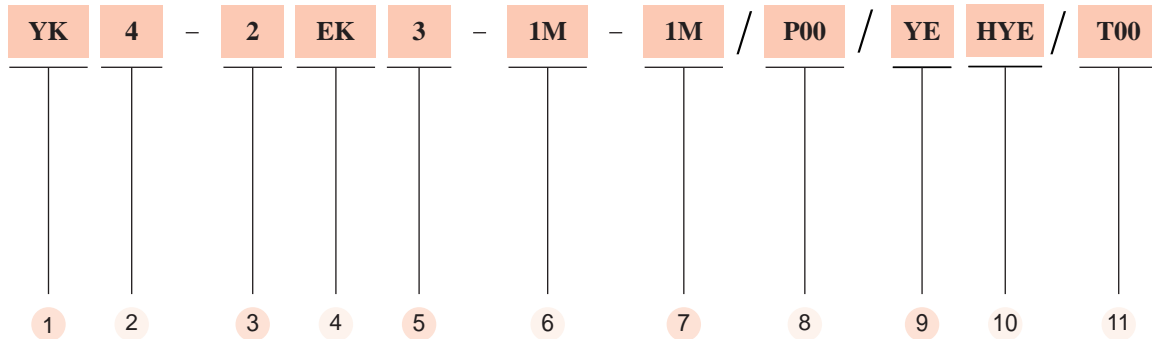
www.bce.it - E-mail: bce@bce.it



- Splitter & Junction box

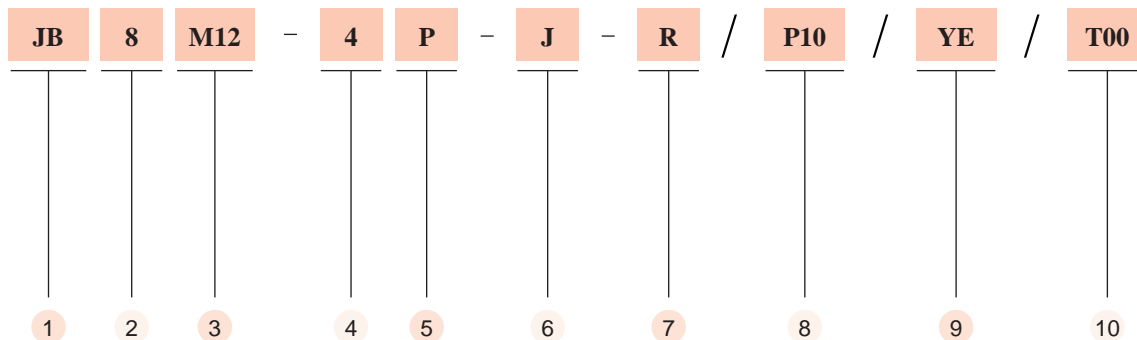
Splitter&Junction box part number key

Splitter



- | | | |
|---|---|--|
| <p>1 YZ Compact type Male M12x1
YK Compact type Female M12x1
YSZ Compact type Male M8x1
YSK Compact type Female M8x1
YWZ Wide type Male M12x1
YWK Wide type Female M12x1
YVZ Narrow type Male M12x1
YVK Narrow type Female M12x1</p> <p>2 Number of pins
Contact distribution</p> <p>3 Branch connection number
Blank Adapter</p> | <p>4 EK M12x1 Female
EZ M12x1 Male
SK M8x1 Female
SZ M8x1 Male</p> <p>5 Number of pins
Contact distribution</p> <p>6 Branch1 length [m]</p> <p>7 Branch2 length [m]</p> <p>8 Cable code
As with M12 I/O type cable code</p> | <p>9 Color of cable
Blank Standard black
YE Yellow (Customization)
GY Gray (Customization)</p> <p>10 Color of plug body
Blank Standard black
HYE Plug body yellow (Customization)
HBU Plug body blue (Customization)</p> <p>11 Varieties</p> |
|---|---|--|

Junction box



- | | | |
|---|---|--|
| <p>1 JB Standard Junction box
JBW Wide type Junction box</p> <p>2 Port number
4 4 ports
6 6 ports
8 8 ports</p> <p>3 Port link type
M8,M12</p> <p>4 Number of pins
Contact distribution</p> | <p>5 LED Options
Blank No LED
P PNP
N NPN</p> <p>6 Connection Type
J Terminal connection
D2 Cable connection 2m
Blank
M23 Horizontal connection
T M23 vertical connection
M12 M12 vertical connection
M16 M16 vertical connection</p> | <p>7 Each port signal number (R,Dual signal)</p> <p>8 Straight cable outlet material
Blank P00(PVC)
P10 PUR</p> <p>9 straight cable outlet color
Blank Black
YE Yellow
GY Gray</p> <p>10 Varieties</p> |
|---|---|--|

M8/M12 2-Branch Compact Splitters

- Housing material: Oil resistant PUR material , Black
- Coupling nut: Brass/Nickel
- Contact carrier: TPU/Black
- Pin: Brass/Gold
- O-ring: FPM/FKM
- IP degree: IP67
- Temperature range: -30...+90°C
- Mechanical operation: ≥100



Connector type	Type NO.	ID NO.	Circuit diagram
	YSK4-2SZ3-2M-2M/P00 YSK4-2SZ3-5M-2M/P00 YSK4-2SZ3-10M-2M/P00	10014600 10014601 10014602	
	YSZ4-2SK3-2M-2M/P00 YSZ4-2SK3-5M-2M/P00 YSZ4-2SK3-10M-2M/P00	10014610 10014611 10014612	
	YK4-2EZ3-2M-2M/P00 YK4-2EZ3-5M-5M/P00 YK4-2EZ3-10M-10M/P00	10014000 10014001 10014002	
	YK4-2SZ3-2M-2M/P00 YK4-2SZ3-5M-5M/P00 YK4-2SZ3-10M-10M/P00	10014010 10014011 10014012	
	YZ4-2EK3-2M-2M/P00 YZ4-2EK3-5M-5M/P00 YZ4-2EK3-10M-10M/P00	10014020 10014021 10014022	
	YZ4-2SK3-2M-2M/P00 YZ4-2SK3-5M-5M/P00 YZ4-2SK3-10M-10M/P00	10014030 10014031 10014032	

* Standard cable lengths are 2/5/10M, Consult factory for other lengths

** Standard coupling nut material is nickel plated brass

B.C.E. s.r.l.

Via Regina Pacis, 54/c - 41049 SASSUOLO (MO) Italy

Tel. +39 0536 811.616 r.a. - Fax +39 0536 811.500

www.bce.it - E-mail: bce@bce.it

GSEE TECH | G02

M12 2-Branch Splitters

- Housing material: Oil resistant PUR material , Black
- Coupling nut: Brass/Nickel
- Contact carrier: TPU/Black
- Pin: Brass/Gold
- O-ring: FPM/FKM
- IP degree: IP67
- Temperature range: -30...+90°C
- Mechanical operation: ≥100



Connector type	Type NO.	ID NO.	Circuit diagram
<p>Ø15 coupling nut</p>	<p>YWZ4-2EK3 Black YWZ4-2EK3/HBU Blue YWZ4-2EK3/HYE Yellow</p>	<p>10086000 10086001 10086002</p>	
<p>Ø15 coupling nut</p>	<p>YWZ5-2EK4.5 Black YWZ5-2EK4.5/HBU Blue YWZ5-2EK4.5/HYE Yellow</p>	<p>10086010 10086011 10086012</p>	
<p>Ø19 coupling nut</p>	<p>YWZ4-2EK3/10 Black YWZ4-2EK3/HBU10 Blue YWZ4-2EK3/HYE10 Yellow</p>	<p>10086060 10086061 10086062</p>	
<p>Ø19 coupling nut</p>	<p>YWZ5-2EK4.5/10 Black YWZ5-2EK4.5/HBU10 Blue YWZ5-2EK4.5/HYE10 Yellow</p>	<p>10086020 10086021 10086022</p>	

* Standard cable lengths are 2/5/10M, Consult factory for other lengths

** Standard coupling nut material is nickel plated brass

M12 2-Branch Splitters

- Housing material: Oil resistant PUR material , Black
- Coupling nut: Brass/Nickel
- Contact carrier: TPU/Black
- Pin: Brass/Gold
- O-ring: FPM/FKM
- IP degree: IP67
- Temperature range: -30...+90°C
- Mechanical operation: ≥100



Connector type	Type NO.	ID NO.	Circuit diagram
	YVZ4-2EK3 Black YVZ4-2EK3/HBU Blue YVZ4-2EK3/HYE Yellow	10086050 10086051 10086052	
	YVZ5-2EK4.5 Black YVZ5-2EK4.5/HBU Blue YVZ5-2EK4.5/HYE Yellow	10086013 10086014 10086015	
	YVZ4-2SK3 Black YVZ4-2SK3/HBU Blue YVZ4-2SK3/HYE Yellow	10086031 10086032 10086033	
	YWZ4-2M-2EK3-2M-2M/P00 YWZ4-5M-2EK3-5M-5M/P00	10084100 10084101	
	YWZ5-2M-2EK4.5-2M-2M/P00 YWZ5-5M-2EK4.5-5M-5M/P00	10084110 10084111	

* Standard cable lengths are 2/5/10M, Consult factory for other lengths

** Standard coupling nut material is nickel plated brass

B.C.E. s.r.l.

Via Regina Pacis, 54/c - 41049 SASSUOLO (MO) Italy

Tel. +39 0536 811.616 r.a. - Fax +39 0536 811.500

www.bce.it - E-mail: bce@bce.it

GSEE TECH | G04

M8 4 ports Junction box

- Housing material: Nylon/Black
- Coupling nut: Brass/Nickel
- Contact carrier: TPU/Black
- Pin: Brass/Gold
- O-ring: FPM/FKM, IP degree: IP67
- Load: 10~30VDC, 2 A/port, 6 A total, LED 10mA
- Temperature range: -30...+80°C
- Mechanical operation: ≥100



Dimensions/Circuit diagram	Specifications	Type NO./ID NO.
	<p>1 signal per port NO LED M12 vertical connector</p>	<p>JB4M8-3-M12 10071130</p>
	<p>1 signal per port PNP LED M12 vertical connector</p>	<p>JB4M8-3P-M12 10071131</p>

* Standard cable lengths are 2/5/10M, Consult factory for other lengths

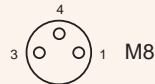
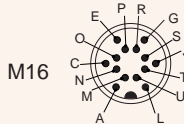
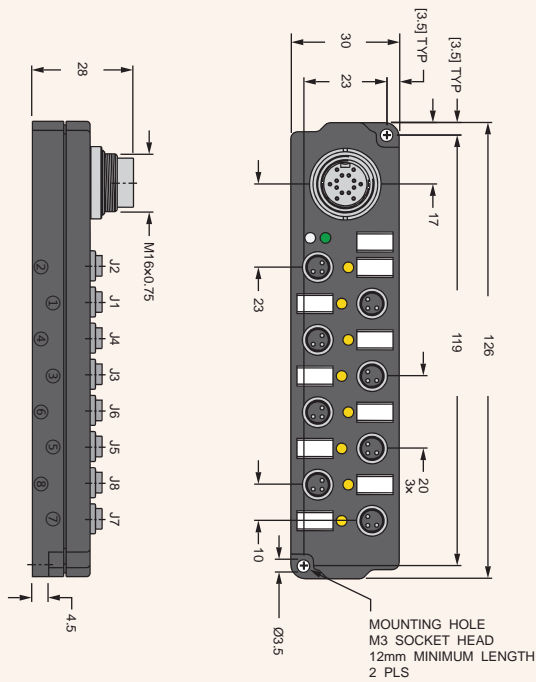
** Standard coupling nut material is nickel plated brass

M8 8 ports Junction box

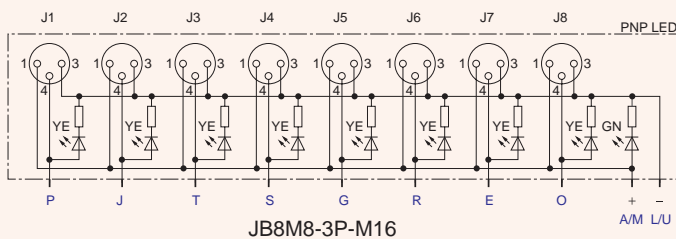
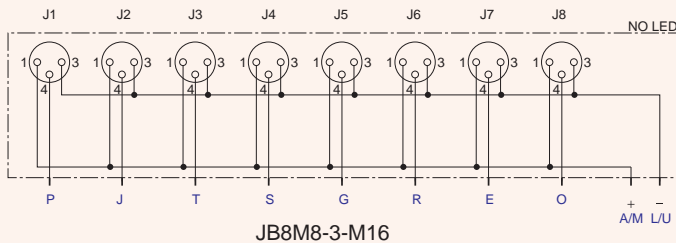
- Housing material:Nylon/Black
- Coupling nut:Brass/Nickel
- Contact carrier:TPU/Black
- Pin:Brass/Gold
- O-ring:FPM/FKM, IP degree:IP67
- Load:10~30VDC,2 A/port, 6 A total,LED 10mA
- Temperature range:-30...+80°C
- Mechanical operation:≥100



Dimensions/Circuit diagram



- Thread connection
- Cable connection
- Terminal connection



Specifications

1 signal per port
NO LED
M16 vertical connector

1 signal per port
PNP LED
M16 vertical connector

Type NO./ID NO.

JB8M8-3-M16
10073150

JB8M8-3P-M16
10073151

* Standard cable lengths are 2/5/10M, Consult factory for other lengths

** Standard coupling nut material is nickel plated brass

M8 4 ports Junction box

- Housing material:Nylon/Black
- Coupling nut:Brass/Nickel
- Contact carrier:TPU/Black
- Pin:Brass/Gold
- O-ring:FPM/FKM, IP degree:IP67
- Load:10~30VDC,2 A/port, 6 A total,LED 10mA
- Temperature range:-30...+80°C
- Mechanical operation:≥100



Dimensions/Circuit diagram	Specifications	Type NO./ID NO.
<div style="text-align: center; margin-top: 10px;"> <p>M8</p> </div> <div style="margin-top: 10px;"> <ul style="list-style-type: none"> ■ Thread connection ■ Cable connection ■ Terminal connection </div> <div style="margin-top: 10px;"> <p style="text-align: center;">JB8M8-3-D2</p> </div> <div style="margin-top: 10px;"> <p style="text-align: center;">JB8M8-3P-D2</p> </div>	<p>1 signal per port NO LED 2m Black 10 Wires 2x20AWG+8x24AWG PVC Ø8.0mm Cable Type NO. : CS102001-*M</p> <hr/> <p>1 signal per port PNP LED 2m Black 10 Wires 2x20AWG+8x24AWG PVC Ø8.0mm Cable Type NO. : CS102001-*M</p>	<p>JB8M8-3-D2 10073160</p> <hr/> <p>JB8M8-3P-D2 10073161</p>

* Standard cable lengths are 2/5/10M, Consult factory for other lengths

** Standard coupling nut material is nickel plated brass

B.C.E. s.r.l.

Via Regina Pacis, 54/c - 41049 SASSUOLO (MO) Italy

Tel. +39 0536 811.616 r.a. - Fax +39 0536 811.500

www.bce.it - E-mail: bce@bce.it

M8 8 ports Wide type Junction box

- Housing material: Nylon/Black
- Coupling nut: Brass/Nickel
- Contact carrier: TPU/Black
- Pin: Brass/Gold
- O-ring: FPM/FKM, IP degree: IP67
- Load: 10~30VDC, 2 A/port, 6 A total, LED 10mA
- Temperature range: -30...+80°C
- Mechanical operation: ≥100



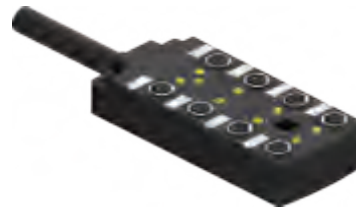
Dimensions/Circuit diagram	Specifications	Type NO./ID NO.
	<p>1 signal per port NO LED M16 vertical connector</p>	<p>JBW8M8-3-M16 10073170</p>
	<p>1 signal per port PNP LED M16 vertical connector</p>	<p>JBW8M8-3P-M16 10073171</p>

* Standard cable lengths are 2/5/10M, Consult factory for other lengths

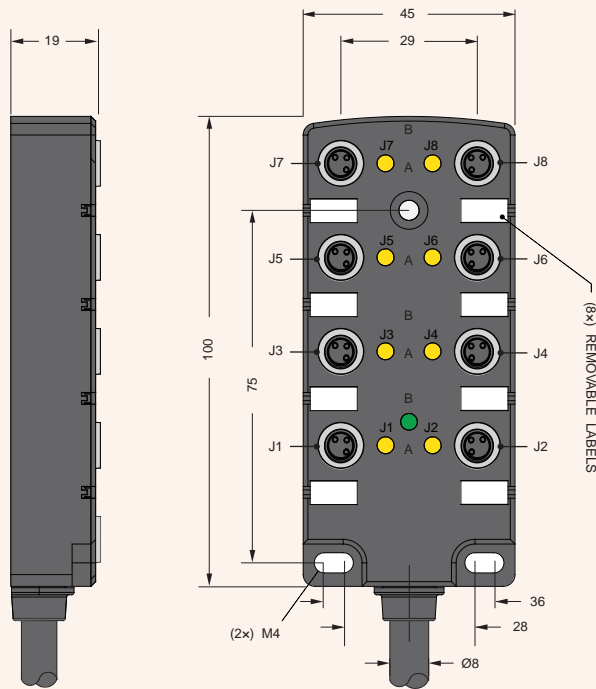
** Standard coupling nut material is nickel plated brass

M8 8 ports Wide type Junction box

- Housing material:Nylon/Black
- Coupling nut:Brass/Nickel
- Contact carrier:TPU/Black
- Pin:Brass/Gold
- O-ring:FPM/FKM, IP degree:IP67
- Load:10~30VDC,2 A/port, 6 A total,LED 10mA
- Temperature range:-30...+80°C
- Mechanical operation:≥100



Dimensions/Circuit diagram



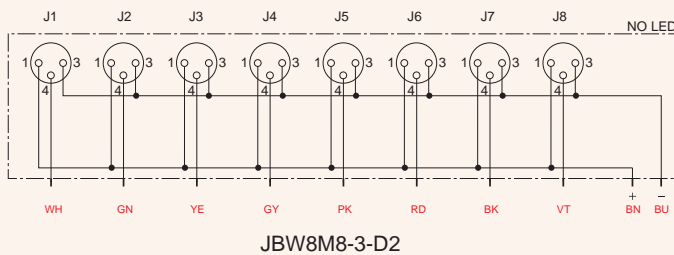
Specifications

Type NO./ID NO.

1 signal per port
NO LED
2m Black 10 Wires
2x20AWG+8x24AWG
PVC
Ø8.0mm
Cable Type NO. :
CS102001-*M

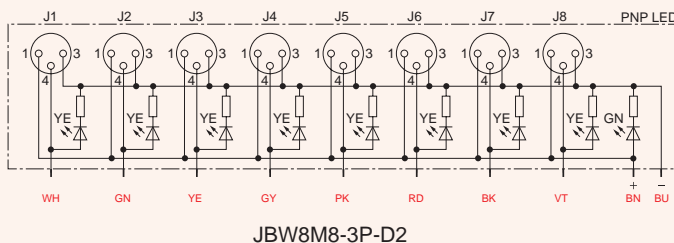
JBW8M8-3-D2
10073180

■ Thread connection
■ Cable connection
■ Terminal connection



1 signal per port
PNP LED
2m Black 10 Wires
2x20AWG+8x24AWG
PVC
Ø8.0mm
Cable Type NO. :
CS102001-*M

JBW8M8-3P-D2
10073181



* Standard cable lengths are 2/5/10M, Consult factory for other lengths

** Standard coupling nut material is nickel plated brass

B.C.E. s.r.l.

Via Regina Pacis, 54/c - 41049 SASSUOLO (MO) Italy

Tel. +39 0536 811.616 r.a. - Fax +39 0536 811.500

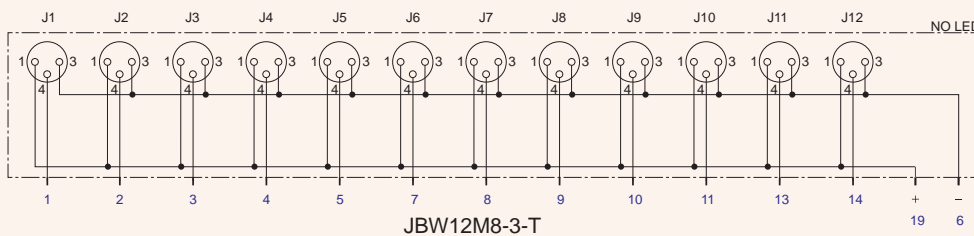
www.bce.it - E-mail: bce@bce.it

M8 12 ports Wide type Junction box

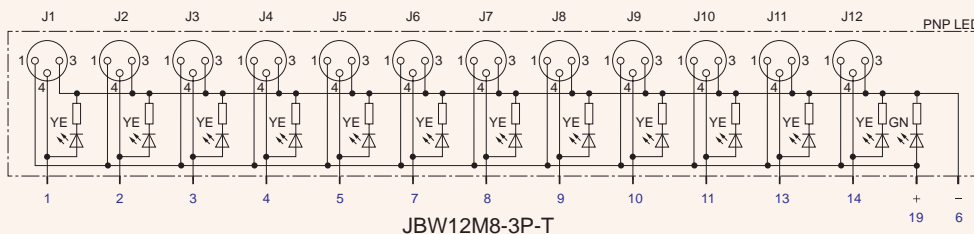
- Housing material: Nylon/Black
- Coupling nut: Brass/Nickel
- Contact carrier: TPU/Black
- Pin: Brass/Gold
- O-ring: FPM/FKM, IP degree: IP67
- Load: 10~30VDC, 2 A/port, 6 A total, LED 10mA
- Temperature range: -30...+80°C
- Mechanical operation: ≥100



Dimensions/Circuit diagram	Specifications	Type NO./ID NO.
	<p>1 signal per port NO LED M23 vertical connector</p>	<p>JBW12M8-3-T 10073190</p>
	<p>1 signal per port PNP LED M23 vertical connector</p>	<p>JBW12M8-3P-T 10073191</p>



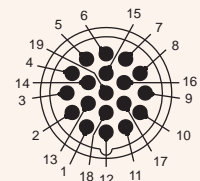
JBW12M8-3-T



JBW12M8-3P-T

- Thread connection
- Cable connection
- Terminal connection

M23
19-Pin



* Standard cable lengths are 2/5/10M, Consult factory for other lengths

** Standard coupling nut material is nickel plated brass

M8 12 ports Wide type Junction box

- Housing material:Nylon/Black
- Coupling nut:Brass/Nickel
- Contact carrier:TPU/Black
- Pin:Brass/Gold
- O-ring:FPM/FKM, IP degree:IP67
- Load:10~30VDC,2 A/port, 6 A total,LED 10mA
- Temperature range:-30...+80°C
- Mechanical operation:≥100



Dimensions/Circuit diagram	Specifications	Type NO./ID NO.
	<p>1 signal per port NO LED 2m Black 14 Wires 2x20AWG+12x24AWG PVC Ø8.0mm Cable Type NO. : CS142000-*M</p>	<p>JBW12M8-3-D2 10773200</p>
	<p>1 signal per port PNP LED 2m Black 14 Wires 2x20AWG+12x24AWG PVC Ø8.0mm Cable Type NO. : CS142000-*M</p>	<p>JBW12M8-3P-D2 10773201</p>

- Thread connection
- Cable connection
- Terminal connection

* Standard cable lengths are 2/5/10M, Consult factory for other lengths

** Standard coupling nut material is nickel plated brass

B.C.E. s.r.l.

Via Regina Pacis, 54/c - 41049 SASSUOLO (MO) Italy

Tel. +39 0536 811.616 r.a. - Fax +39 0536 811.500

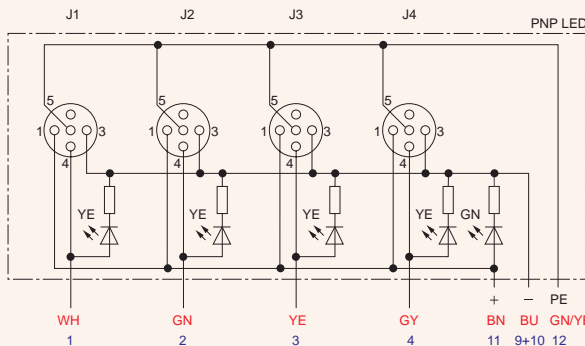
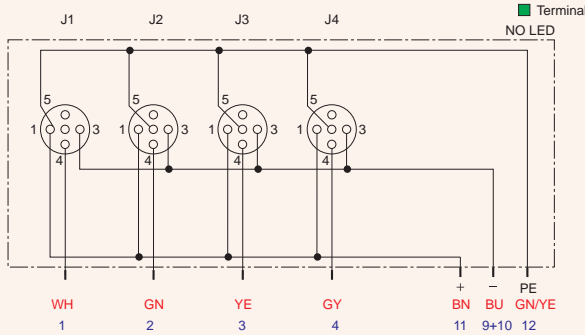
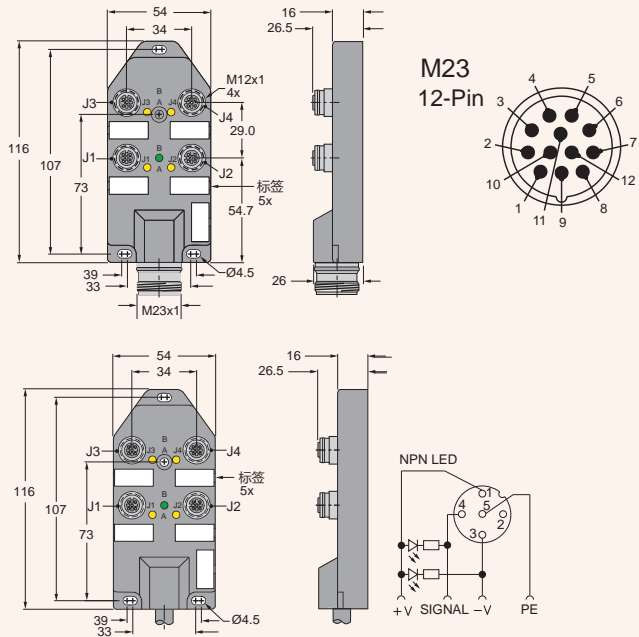
www.bce.it - E-mail: bce@bce.it

M12 4 ports Junction box

- Housing material: Nylon/Black
- Coupling nut: Brass/Nickel
- Contact carrier: TPU/Black
- Pin: Brass/Gold
- O-ring: FPM/FKM, IP degree: IP67
- Load: 10~30VDC, 2 A/port, 6 A total, LED 10mA
- Temperature range: -30...+80°C
- Mechanical operation: ≥100



Dimensions/Circuit diagram



Specifications

Type NO./ID NO.

1 signal per port
NO LED
M23 Horizontal connector

JB4M12-4
10071000

1 signal per port
PNP LED
M23 Horizontal connector

JB4M12-4P
10071001

1 signal per port
PNP LED
M23 Horizontal connector

JB4M12-4N
10071002

1 signal per port
NO LED
2m Black 7 Wires
7x18AWG PVC
Ø7.9mm
Cable Type NO. :
CS071800-*M

JB4M12-4-D2
10071010

1 signal per port
PNP LED
2m Black 7 Wires
7x18AWG PVC
Ø7.9mm
Cable Type NO. :
CS071800-*M

JB4M12-4P-D2
10071011

1 signal per port
NPN LED
2m Black 7 Wires
7x18AWG PVC
Ø7.9mm
Cable Type NO. :
CS071800-*M

JB4M12-4N-D2
10071042

* Standard cable lengths are 2/5/10M, Consult factory for other lengths

** Standard coupling nut material is nickel plated brass

M12 4 ports Junction box

- Housing material: Nylon/Black
- Coupling nut: Brass/Nickel
- Contact carrier: TPU/Black
- Pin: Brass/Gold
- O-ring: FPM/FKM, IP degree: IP67
- Load: 10~30VDC, 2 A/port, 9 A total, LED 10mA
- Temperature range: -30...+80°C
- Mechanical operation: ≥100



Dimensions/Circuit diagram	Specifications	Type NO./ID NO.
	<p>1 signal per port NO LED M23 vertical connector</p>	<p>JB4M12-4-T 10071030</p>
	<p>1 signal per port PNP LED M23 vertical connector</p>	<p>JB4M12-4P-T 10071031</p>
	<p>1 signal per port NPN LED M23 vertical connector</p>	<p>JB4M12-4N-T 10071032</p>
	<p>1 signal per port NO LED Terminal connection</p>	<p>JB4M12-4-J 10071020</p>
<p>1 signal per port PNP LED Terminal connection</p>	<p>JB4M12-4P-J 10071021</p>	
<p>1 signal per port NPN LED Terminal connection</p>	<p>JB4M12-4N-J 10071022</p>	

* Standard cable lengths are 2/5/10M, Consult factory for other lengths

** Standard coupling nut material is nickel plated brass

B.C.E. s.r.l.

Via Regina Pacis, 54/c - 41049 SASSUOLO (MO) Italy

Tel. +39 0536 811.616 r.a. - Fax +39 0536 811.500

www.bce.it - E-mail: bce@bce.it

M12 4 ports Junction box

- Housing material: Nylon/Black
- Coupling nut: Brass/Nickel
- Contact carrier: TPU/Black
- Pin: Brass/Gold
- O-ring: FPM/FKM, IP degree: IP67
- Load: 10~30VDC, 2 A/port, 9 A total, LED 10mA
- Temperature range: -30...+80°C
- Mechanical operation: ≥100



Dimensions/Circuit diagram	Specifications	Type NO./ID NO.
	<p>2 signals per port NO LED M23 Horizontal connector</p>	<p>JB4M12-4-R 10071050</p>
	<p>2 signals per port PNP LED M23 Horizontal connector</p>	<p>JB4M12-4P-R 10071051</p>
	<p>2 signals per port NPN LED M23 Horizontal connector</p>	<p>JB4M12-4N-R 10071052</p>
	<p>2 signals per port No LED 2m Black 11 Wires PVC 3x18AWG+8x22AWG Ø10.5mm Cable Type NO. : CS111801-*M</p>	<p>JB4M12-4-D2-R 10071060</p>
	<p>2 signals per port PNP LED 2m Black 11 Wires PVC 3x18AWG+8x22AWG Ø10.5mm Cable Type NO. : CS111801-*M</p>	<p>JB4M12-4P-D2-R 10071061</p>
	<p>2 signals per port NPN LED 2m Black 11 Wires PVC 3x18AWG+8x22AWG Ø10.5mm Cable Type NO. : CS111801-*M</p>	<p>JB4M12-4N-D2-R 10071062</p>

* Standard cable lengths are 2/5/10M, Consult factory for other lengths

** Standard coupling nut material is nickel plated brass

M12 4 ports Junction box

- Housing material:Nylon/Black
- Coupling nut:Brass/Nickel
- Contact carrier:TPU/Black
- Pin:Brass/Gold
- O-ring:FPM/FKM, IP degree:IP67
- Load:10~30VDC,2 A/port, 6 A total,LED 10mA
- Temperature range:-30...+80°C
- Mechanical operation:≥100



Dimensions/Circuit diagram	Specifications	Type NO./ID NO.
	<p>2 signals per port NO LED M23 vertical connector</p>	<p>JB4M12-4-T-R 10071080</p>
	<p>2 signals per port PNP LED M23 vertical connector</p>	<p>JB4M12-4P-T-R 10071081</p>
	<p>2 signals per port NPN LED M23 vertical connector</p>	<p>JB4M12-4N-T-R 10071082</p>
	<p>2 signals per port NO LED Terminal connection</p>	<p>JB4M12-4-J-R 10071070</p>
	<p>2 signals per port PNP LED Terminal connection</p>	<p>JB4M12-4P-J-R 10071071</p>
	<p>2 signals per port NPN LED Terminal connection</p>	<p>JB4M12-4N-J-R 10071072</p>

* Standard cable lengths are 2/5/10M, Consult factory for other lengths

** Standard coupling nut material is nickel plated brass

B.C.E. s.r.l.

Via Regina Pacis, 54/c - 41049 SASSUOLO (MO) Italy

Tel. +39 0536 811.616 r.a. - Fax +39 0536 811.500

www.bce.it - E-mail: bce@bce.it

M12 6 ports Junction box

- Housing material: Nylon/Black
- Coupling nut: Brass/Nickel
- Contact carrier: TPU/Black
- Pin: Brass/Gold
- O-ring: FPM/FKM, IP degree: IP67
- Load: 10~30VDC, 2 A/port, 9 A total, LED 10mA
- Temperature range: -30...+80°C
- Mechanical operation: ≥100



Dimensions/Circuit diagram	Specifications	Type NO./ID NO.
<p>M23 12-Pin</p>	1 signal per port NO LED M23 Horizontal connector	JB6M12-4 10072000
	1 signal per port PNP LED M23 Horizontal connector	JB6M12-4P 10072001
<p>NPN LED</p> <p>■ Thread connection ■ Cable connection ■ Terminal connection</p>	1 signal per port PNP LED M23 Horizontal connector	JB6M12-4N 10072002
<p>NO LED</p>	1 signal per port NO LED 2m Black 9 Wires 9x18AWG PVC Ø10.0mm Cable Type NO. : CS091800-*M	JB6M12-4-D2 10072010
<p>PNP LED</p>	1 signal per port PNP LED 2m Black 9 Wires 9x18AWG PVC Ø10.0mm Cable Type NO. : CS091800-*M	JB6M12-4P-D2 10072011
<p>NPN LED</p>	1 signal per port NPN LED 2m Black 9 Wires 9x18AWG PVC Ø10.0mm Cable Type NO. : CS091800-*M	JB6M12-4N-D2 10072042

* Standard cable lengths are 2/5/10M, Consult factory for other lengths

** Standard coupling nut material is nickel plated brass

M12 6 ports Junction box

- Housing material: Nylon/Black
- Coupling nut: Brass/Nickel
- Contact carrier: TPU/Black
- Pin: Brass/Gold
- O-ring: FPM/FKM, IP degree: IP67
- Load: 10~30VDC, 2 A/port, 9 A total, LED 10mA
- Temperature range: -30...+80°C
- Mechanical operation: ≥100



Dimensions/Circuit diagram	Specifications	Type NO./ID NO.
<p style="text-align: center;">M23 12-Pin</p>	<p>1 signal per port NO LED M23 vertical connector</p>	<p>JB6M12-4-T 10072030</p>
<p style="text-align: center;">Terminal connection</p>	<p>1 signal per port PNP LED M23 vertical connector</p>	<p>JB6M12-4P-T 10072031</p>
	<p>1 signal per port NPN LED M23 vertical connector</p>	<p>JB6M12-4N-T 10072032</p>
<p style="text-align: center;">NO LED</p>	<p>1 signal per port NO LED Terminal connection</p>	<p>JB6M12-4-J 10072020</p>
<p style="text-align: center;">PNP LED</p>	<p>1 signal per port PNP LED Terminal connection</p>	<p>JB6M12-4P-J 10072021</p>
<p style="text-align: center;">NPN LED</p>	<p>1 signal per port NPN LED Terminal connection</p>	<p>JB6M12-4N-J 10072022</p>

* Standard cable lengths are 2/5/10M, Consult factory for other lengths

** Standard coupling nut material is nickel plated brass

B.C.E. s.r.l.

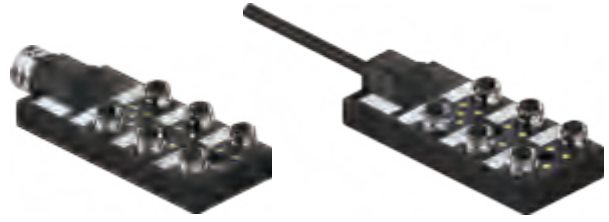
Via Regina Pacis, 54/c - 41049 SASSUOLO (MO) Italy

Tel. +39 0536 811.616 r.a. - Fax +39 0536 811.500

www.bce.it - E-mail: bce@bce.it

M12 6 ports Junction box

- Housing material:Nylon/Black
- Coupling nut:Brass/Nickel
- Contact carrier:TPU/Black
- Pin:Brass/Gold
- O-ring:FPM/FKM, IP degree:IP67
- Load:10~30VDC,2 A/port, 9 A total,LED 10mA
- Temperature range:-30...+80°C
- Mechanical operation:≥100



Dimensions/Circuit diagram	Specifications	Type NO./ID NO.
<p>M23 19-Pin</p>	<p>2 signals per port NO LED M23 Horizontal connector</p>	<p>JB6M12-4-R 10071100</p>
<p>M23 19-Pin</p>	<p>2 signals per port PNP LED M23 Horizontal connector</p>	<p>JB6M12-4P-R 10071101</p>
<p>M23 19-Pin</p>	<p>2 signals per port NPN LED M23 Horizontal connector</p>	<p>JB6M12-4N-R 10071102</p>
<p>Legend: ■ Thread connection ■ Cable connection ■ Terminal connection</p>	<p>2 signals per port No LED 2m Black 15Wires 3x18AWG+12x22AWG Ø8.4mm,PVC Cable Type NO. : CS152200-*M</p>	<p>JB6M12-4-D2-R 10071090</p>
	<p>2 signals per port PNP LED 2m Black 15Wires 3x18AWG+12x22AWG Ø8.4mm,PVC Cable Type NO. : CS152200-*M</p>	<p>JB6M12-4P-D2-R 10071091</p>
	<p>2 signals per port NPN LED 2m Black 15Wires 3x18AWG+12x22AWG Ø8.4mm,PVC Cable Type NO. : CS152200-*M</p>	<p>JB6M12-4N-D2-R 10071092</p>

* Standard cable lengths are 2/5/10M, Consult factory for other lengths

** Standard coupling nut material is nickel plated brass

M12 6 ports Junction box

- Housing material:Nylon/Black
- Coupling nut:Brass/Nickel
- Contact carrier:TPU/Black
- Pin:Brass/Gold
- O-ring:FPM/FKM:FPM/FKM , IP degree:IP67
- Load:10~30VDC,2 A/port, 9 A total,LED 10mA
- Temperature range:-30...+80°C
- Mechanical operation:≥100



Dimensions/Circuit diagram	Specifications	Type NO./ID NO.
<p>M23 19-Pin</p>	<p>2 signals per port NO LED M23 vertical connector</p>	<p>JB6M12-4-T-R 10072080</p>
<p>Terminal connection 21-Pin</p>	<p>2 signals per port PNP LED M23 vertical connector</p>	<p>JB6M12-4P-T-R 10072081</p>
<p>NPN LED</p> <p>+V SIGNAL -V SIGNAL PE</p> <p>■ Thread connection ■ Cable connection ■ Terminal connection</p>	<p>2 signals per port NPN LED M23 vertical connector</p>	<p>JB6M12-4N-T-R 10072082</p>
<p>NO LED</p>	<p>2 signals per port NO LED Terminal connection</p>	<p>JB6M12-4-J-R 10072070</p>
<p>PNP LED</p>	<p>2 signals per port PNP LED Terminal connection</p>	<p>JB6M12-4P-J-R 10072071</p>
<p>NPN LED</p>	<p>2 signals per port NPN LED Terminal connection</p>	<p>JB6M12-4N-J-R 10072072</p>

* Standard cable lengths are 2/5/10M, Consult factory for other lengths

** Standard coupling nut material is nickel plated brass

B.C.E. s.r.l.

Via Regina Pacis, 54/c - 41049 SASSUOLO (MO) Italy

Tel. +39 0536 811.616 r.a. - Fax +39 0536 811.500

www.bce.it - E-mail: bce@bce.it

GSEE TECH G20

M12 8 ports Junction box

- Housing material:Nylon/Black
- Coupling nut:Brass/Nickel
- Contact carrier:TPU/Black
- Pin:Brass/Gold
- O-ring:FPM/FKM, IP degree:IP67
- Load:10~30VDC,2 A/port, 9 A total,LED 10mA
- Temperature range:-30...+80°C
- Mechanical operation:≥100



Dimensions/Circuit diagram	Specifications	Type NO./ID NO.
<p>M23 12-Pin</p>	1 signal per port NO LED M23 Horizontal connector	JB8M12-4 10073000
	1 signal per port PNP LED M23 Horizontal connector	JB8M12-4P 10073001
<p>NPN LED</p>	1 signal per port PNP LED M23 Horizontal connector	JB8M12-4N 10073002
<p>Legend: ■ Thread connection ■ Cable connection ■ Terminal connection</p>	1 signal per port NO LED 2m Black 11 Wires 11x18AWG PVC Ø10.0mm Cable Type NO. : CS111800-*M	JB8M12-4-D2 10073010
	1 signal per port PNP LED 2m Black 9 Wires 9x18AWG PVC Ø10.0mm Cable Type NO. : CS091800-*M	JB8M12-4P-D2 10073011
	1 signal per port NPN LED 2m Black 9 Wires 9x18AWG PVC Ø10.0mm Cable Type NO. : CS091800-*M	JB8M12-4N-D2 10073042

* Standard cable lengths are 2/5/10M, Consult factory for other lengths

** Standard coupling nut material is nickel plated brass

M12 8 ports Junction box

- Housing material:Nylon/Black
- Coupling nut:Brass/Nickel
- Contact carrier:TPU/Black
- Pin:Brass/Gold
- O-ring:FPM/FKM, IP degree:IP67
- Load:10~30VDC,2 A/port, 6 A total,LED 10mA
- Temperature range:-30...+80°C
- Mechanical operation:≥100



Dimensions/Circuit diagram	Specifications	Type NO./ID NO.
	<p>1 signal per port NO LED M23 vertical connector</p>	<p>JB8M12-4-T 10073030</p>
	<p>1 signal per port PNP LED M23 vertical connector</p>	<p>JB8M12-4P-T 10073031</p>
	<p>1 signal per port NPN LED M23 vertical connector</p>	<p>JB8M12-4N-T 10073032</p>
	<p>1 signal per port NO LED Terminal connection</p>	<p>JB8M12-4-J 10073020</p>
	<p>1 signal per port PNP LED Terminal connection</p>	<p>JB8M12-4P-J 10073021</p>
	<p>1 signal per port NPN LED Terminal connection</p>	<p>JB8M12-4N-J 10073022</p>

* Standard cable lengths are 2/5/10M, Consult factory for other lengths

** Standard coupling nut material is nickel plated brass

B.C.E. s.r.l.

Via Regina Pacis, 54/c - 41049 SASSUOLO (MO) Italy

Tel. +39 0536 811.616 r.a. - Fax +39 0536 811.500

www.bce.it - E-mail: bce@bce.it

M12 8 ports Junction box

- Housing material: Nylon/Black
- Coupling nut: Brass/Nickel
- Contact carrier: TPU/Black
- Pin: Brass/Gold
- O-ring: FPM/FKM, IP degree: IP67
- Load: 10~30VDC, 2 A/port, 6 A total, LED 10mA
- Temperature range: -30...+80°C
- Mechanical operation: ≥100



Dimensions/Circuit diagram	Specifications	Type NO./ID NO.
<p>M23 19-Pin</p>	2 signals per port NO LED M23 Horizontal connector	JB8M12-4-R 10073050
	2 signals per port PNP LED M23 Horizontal connector	JB8M12-4P-R 10073051
	2 signals per port NPN LED M23 Horizontal connector	JB8M12-4N-R 10073052
<p>Legend: ■ Thread connection ■ Cable connection ■ Terminal connection</p>	2 signals per port No LED 2m Black 19 Wires 3x18AWG+16x22AWG Ø10.7mm PVC Cable Type NO. : CS192200-*M	JB8M12-4-D2-R 10073060
	2 signals per port PNP LED 2m Black 19 Wires 3x18AWG+16x22AWG Ø10.7mm PVC Cable Type NO. : CS192200-*M	JB8M12-4P-D2-R 10073061
	2 signals per port NPN LED 2m Black 19 Wires 3x18AWG+16x22AWG Ø10.7mm PVC Cable Type NO. : CS192200-*M	JB8M12-4N-D2-R 10073062

* Standard cable lengths are 2/5/10M, Consult factory for other lengths

** Standard coupling nut material is nickel plated brass

M12 8 ports Junction box

- Housing material:Nylon/Black
- Coupling nut:Brass/Nickel
- Contact carrier:TPU/Black
- Pin:Brass/Gold
- O-ring:FPM/FKM, IP degree:IP67
- Load:10~30VDC,2 A/port, 6 A total,LED 10mA
- Temperature range:-30...+80°C
- Mechanical operation:≥100



Dimensions/Circuit diagram	Specifications	Type NO./ID NO.
	<p>2 signals per port NO LED M12 vertical connector</p>	<p>JB8M12-4-T-R 10073080</p>
	<p>2 signals per port PNP LED M12 vertical connector</p>	<p>JB8M12-4P-T-R 10073081</p>
	<p>2 signals per port NPN LED M12 vertical connector</p>	<p>JB8M12-4N-T-R 10073082</p>
	<p>2 signals per port NO LED Terminal connection</p>	<p>JB8M12-4-J-R 10073070</p>
	<p>2 signals per port PNP LED Terminal connection</p>	<p>JB8M12-4P-J-R 10073071</p>
	<p>2 signals per port NPN LED Terminal connection</p>	<p>JB8M12-4N-J-R 10073072</p>

* Standard cable lengths are 2/5/10M, Consult factory for other lengths

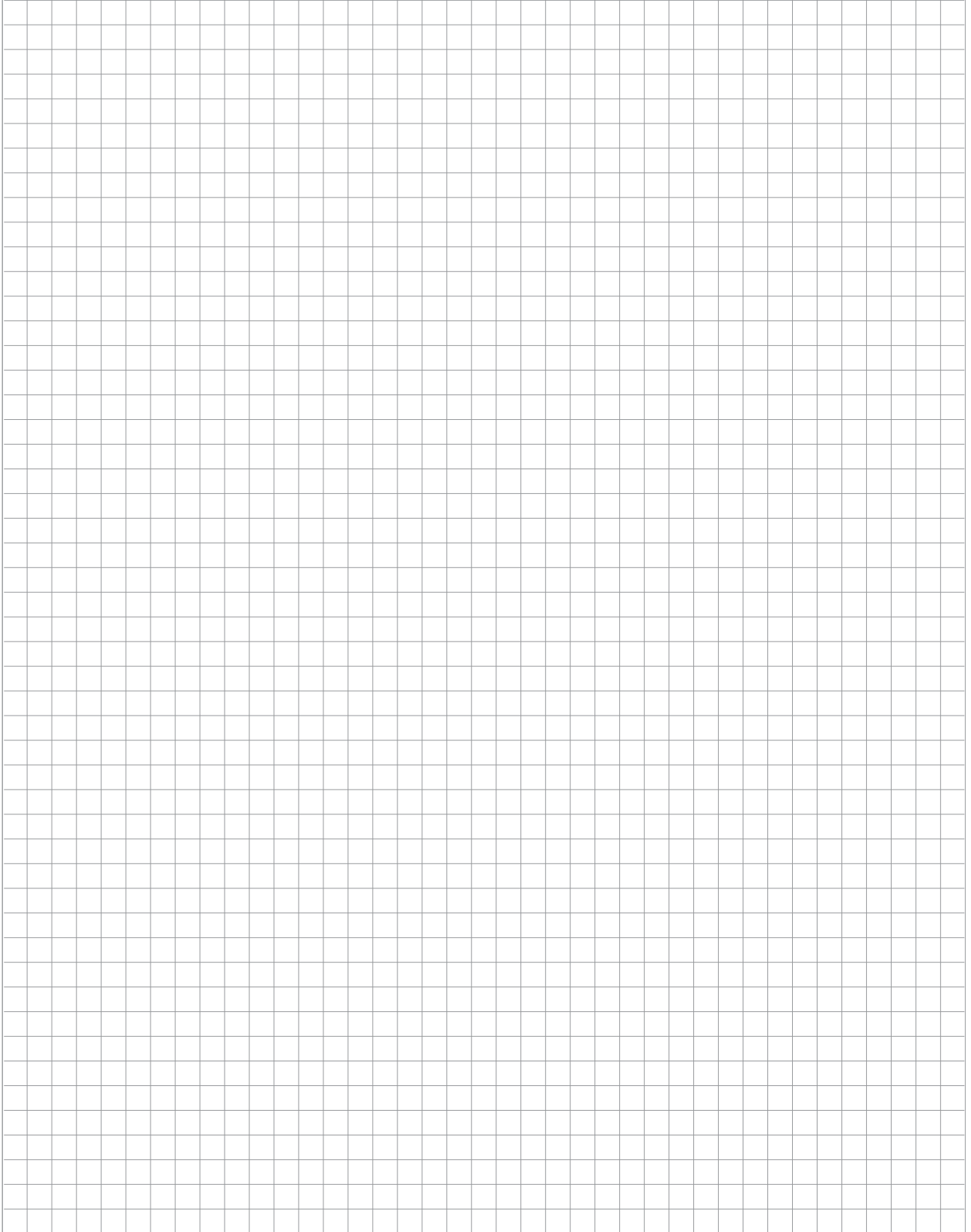
** Standard coupling nut material is nickel plated brass

B.C.E. s.r.l.

Via Regina Pacis, 54/c - 41049 SASSUOLO (MO) Italy

Tel. +39 0536 811.616 r.a. - Fax +39 0536 811.500

www.bce.it - E-mail: bce@bce.it





B.C.E. s.r.l.

Via Regina Pacis, 54/c - 41049 SASSUOLO (MO) Italy

Tel. +39 0536 811.616 r.a. - Fax +39 0536 811.500

www.bce.it - E-mail: bce@bce.it

