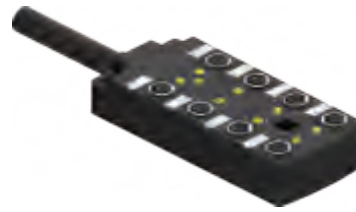


- Housing material: Nylon/Black
- Coupling nut: Brass/Nickel
- Contact carrier: TPU/Black
- Pin: Brass/Gold
- O-ring: FPM/FKM, IP degree: IP67
- Load: 10~30VDC, 2 A/port, 6 A total, LED 10mA
- Temperature range: -30...+80°C
- Mechanical operation: ≥100



Dimensions/Circuit diagram	Specifications	Type NO./ID NO.
<p style="text-align: center;"> <span style="color: blue;">■</span> Thread connection  <span style="color: red;">■</span> Cable connection  <span style="color: green;">■</span> Terminal connection         </p> <p style="text-align: center;"> <b>JBW8M8-3-D2</b>  <b>JBW8M8-3P-D2</b> </p>	<p>1 signal per port NO LED 2m Black 10 Wires 2x20AWG+8x24AWG PVC Ø8.0mm Cable Type NO. : CS102001-*M</p> <hr/> <p>1 signal per port PNP LED 2m Black 10 Wires 2x20AWG+8x24AWG PVC Ø8.0mm Cable Type NO. : CS102001-*M</p>	<p>JBW8M8-3-D2 10073180</p> <hr/> <p>JBW8M8-3P-D2 10073181</p>

\* Standard cable lengths are 2/5/10M, Consult factory for other lengths

\*\* Standard coupling nut material is nickel plated brass