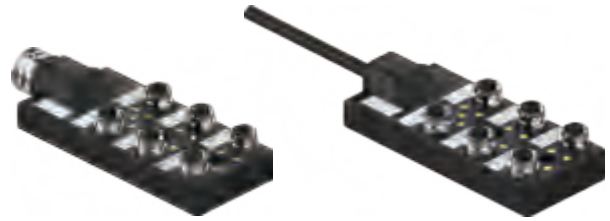


M12 6 ports Junction box

- Housing material:Nylon/Black
- Coupling nut:Brass/Nickel
- Contact carrier:TPU/Black
- Pin:Brass/Gold
- O-ring:FPM/FKM, IP degree:IP67
- Load:10~30VDC,2 A/port, 9 A total,LED 10mA
- Temperature range:-30...+80°C
- Mechanical operation:≥100



Dimensions/Circuit diagram	Specifications	Type NO./ID NO.
<p style="text-align: center;">M23 19-Pin</p>	<p>2 signals per port NO LED M23 Horizontal connector</p>	<p>JB6M12-4-R 10071100</p>
	<p>2 signals per port PNP LED M23 Horizontal connector</p>	<p>JB6M12-4P-R 10071101</p>
	<p>2 signals per port NPN LED M23 Horizontal connector</p>	<p>JB6M12-4N-R 10071102</p>
<p style="text-align: center;">■ Thread connection ■ Cable connection ■ Terminal connection</p>	<p>2 signals per port No LED 2m Black 15Wires 3x18AWG+12x22AWG Ø8.4mm,PVC Cable Type NO. : CS152200-*M</p>	<p>JB6M12-4-D2-R 10071090</p>
	<p>2 signals per port PNP LED 2m Black 15Wires 3x18AWG+12x22AWG Ø8.4mm,PVC Cable Type NO. : CS152200-*M</p>	<p>JB6M12-4P-D2-R 10071091</p>
	<p>2 signals per port NPN LED 2m Black 15Wires 3x18AWG+12x22AWG Ø8.4mm,PVC Cable Type NO. : CS152200-*M</p>	<p>JB6M12-4N-D2-R 10071092</p>

* Standard cable lengths are 2/5/10M, Consult factory for other lengths

** Standard coupling nut material is nickel plated brass