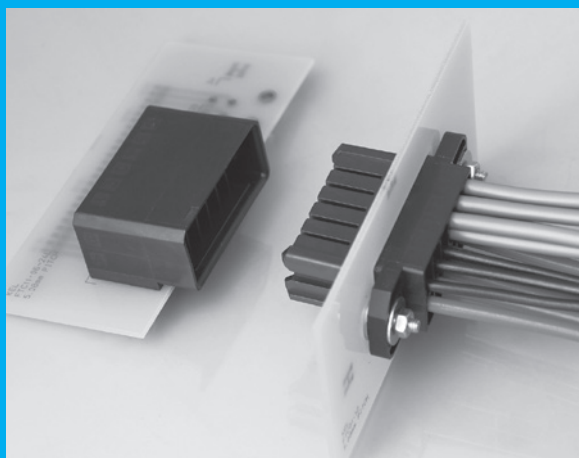


FTC SERIES

RoHS
Compliant

5.08 mm PITCH DRAWER CONNECTOR/TWO CABLES CRIMPABLE TYPE



FEATURES

- ▶ This connector allows two cables to be crimped into one contact.
- ▶ Applicable with the crimping cable AWG #14/16/18/20.
- ▶ The cable crimped terminal can be connected to anywhere of the contact housing.
- ▶ Two cable crimping can transfer the power supply between connectors. i.e. Daisy chain connection
- ▶ Two cables crimping saves space by reducing the number of contact.
- ▶ Absorbs ± 3 mm (0.118") gap in XY directions.
- ▶ Movement of the screwed part of the cable connector can absorb maximum ± 0.7 mm in the XY direction in mating condition.
- ▶ Highly reliable design with an effective mating length of 3 mm.
- ▶ Twin-Leaf Pinching 2 point contact structure prevents buckling of the contact and improves reliability with a stable contact force.

ORDER CODE

FTC01-12

① ②

*Please order in multiples of the quantity per package.

① **[Type] FTC01** : Receptacle (Cable side connector)

② **[Number of contacts] 12** : 12

*Above order code FTC01-12 is for housing only, contact terminals are sold separately. About contact order code, please refer next page.

ORDER CODE

FTC11-12 L F

① ② ③ ④

*Please order in multiples of the quantity per package.

① **[Type] FTC11**: Plug (PCB side connector)

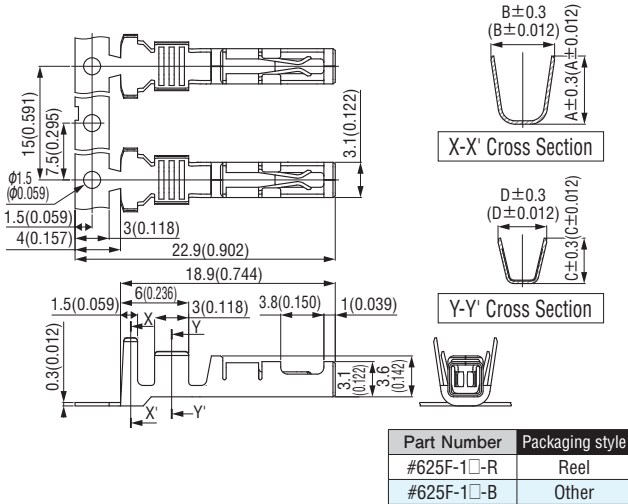
② **[Number of contacts] 12** : 12

③ **[Contact tail style] L** : Right angle

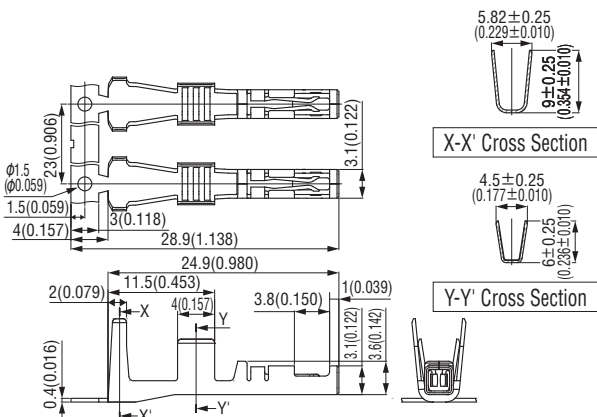
④ **[Gold plating thickness] F**: 0.38 μ m min.

SPECIFICATIONS

Material and plating		Electrical Characteristics	
Insulator material	Glass-filled PBT (UL94V-0), Black	Current rating	[AWG #14/16] 8.5A per contact [AWG #18] 7.5A per contact [AWG #20] 7.0A per contact
Contact material	Copper alloy		
Contact plating	[FTC01] (Contact area) Gold over Nickel (Crimping area) Nickel [FTC11] Gold over Nickel	Contact resistance	10 m Ω max.
		Dielectric withstanding voltage	2,200V AC for 1 minute.
		Insulation resistance	1,000 M Ω min. at 500V DC
		Operating temperature	-55°C to +105°C
Material of mounting bracket	Copper alloy	Durability of insertion and withdrawal	500 times
Fitting finish	Gold plating finish	Recommended cable	#14/16/18/20 AWG Discrete wire cables (Outer diameter of cable coating: Φ 1.8 to Φ 3.4mm)
Washer/Rivet material	Stainless steel	Tensile strength of crimped part	[AWG #14/16] 190N min. [AWG #18] 120N min. [AWG #20] 75 N min.

◆ Crimp contact for FTC01-12 (Cable side connector) [Recommended cable size: 1M/1L]

▶ Product Table

Part Number	A	B	C	D	Number of packaging
#625F-1M-R	5.0(0.197)	4.68(0.184)	3.5(0.138)	3.5(0.138)	2,000
#625F-1M-B	5.0(0.197)	4.68(0.184)	3.5(0.138)	3.5(0.138)	100
#625F-1L-R	6.0(0.236)	5.61(0.221)	4.0(0.157)	4.29(0.169)	2,000
#625F-1L-B	6.0(0.236)	5.61(0.221)	4.0(0.157)	4.29(0.169)	100

◆ Crimp contact for FTC01-12 (Cable side connector) [Recommended cable size: 2L]

▶ Product Table

Part Number	Number of packaging	Packaging style
#625F-2L-R	800	Reel
#625F-2L-B	100	Other

ORDER CODE
#625F - 1

① ② ③ ④

*Please order in multiples of the quantity per package.

- ① **[Contact Name]** #625 : Crimp contact for FTC
- ② **[Gold plating thickness]** F: 0.38 μm min.
- ③ **[Recommended cable size]**
 - 1M: Single crimp AWG #18/20
(Outer diameter of cable coating: Φ 1.8-2.8 mm)
 - Two-piece crimp AWG#20 × 2 pieces
(Outer diameter of cable coating: Φ 1.8 to 1.9 mm × 2 pieces)
 - Two-piece crimp AWG #18 × 2 pieces
(Outer diameter of cable coating: Φ 2.0 to 2.1 mm x 2 pieces)
 - 1L: Single crimp AWG #14/16
(Outer diameter of cable coating: Φ 2.4-3.4 mm)
 - Two-piece crimp AWG #16 × 2 piece
(Outer diameter of cable coating: Φ 3.0 mm × 2 pieces)
- ④ **[Packaging Form]** R: Reel B: Loose

ORDER CODE
#625F - 2L

① ② ③ ④

*Please order in multiples of the quantity per package.

- ① **[Contact Name]** #625: Crimp contact for FTC
- ② **[Gold plating thickness]** F: 0.38 μm min.
- ③ **[Recommended cable size]**
 - 2L: Two-piece crimp AWG #14 × 2 pieces
(Outer diameter of cable coating: Φ 3.4 mm × 2 pieces)
- ④ **[Packaging Form]** R: Reel B: Loose

B.C.E. s.r.l.

Via Regina Pacis, 54/c - 41049 SASSUOLO (MO) Italy

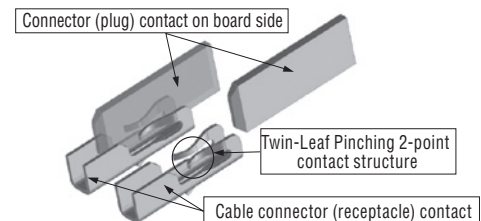
Tel. +39 0536 811.616 r.a. - Fax +39 0536 811.500

www.bce.it - E-mail: bce@bce.it

Twin-Leaf Pinching 2-point contact structure

With the KEL original twin-leaf pinching 2 point contact structure, the flat plate type contact of plug connector is inserted into the contact of receptacle connector (A part of the figure on the right side) for electrical contact.

The flat plate shaped contact of plug connector is tolerant of buckling compared to pin header type contact, and the stable contact force of the pinching structure of receptacle connector assures high reliability of electrical contact.


Assembly tool
◆ Hand tool

Part Number	Hand color	Recommended contact	Recommended crimp number	Recommended cable
CH-07 (#625-1M_FTC)	Red	#625F-1M-□	One	AWG#18/20
			Two	AWG#20×2
			Two	AWG#18×2
CH-08 (#625-1L_FTC)	Green	#625F-1L-□	One	AWG#14/16
			Two	AWG#16×2
CH-09 (#625-2L_FTC)	Blue	#625F-2L-□	Two	AWG#14×2

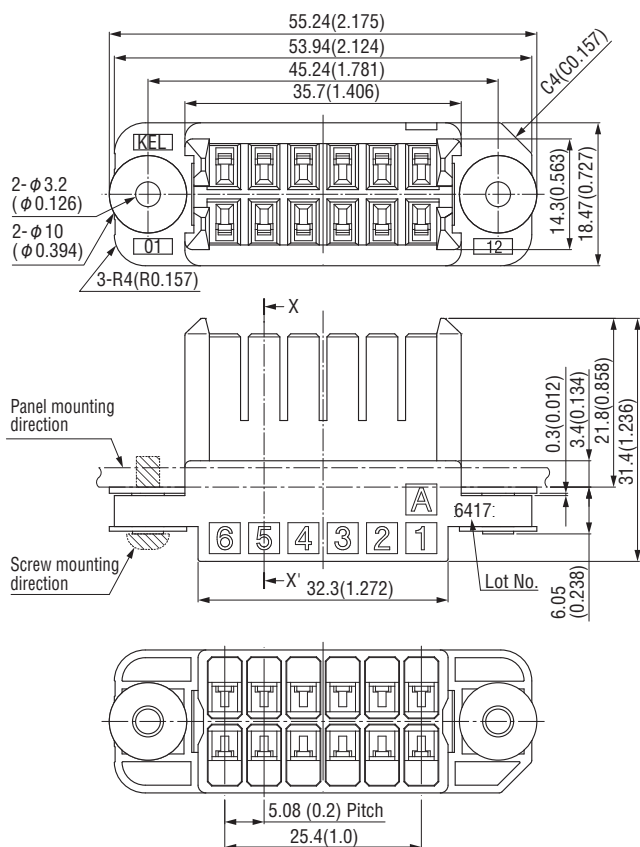
◆ Crimping machine

Crimping machine	#625F-1M-R	#625F-1L-R	#625F-2L-R
Manufacturer	Nippon Automatic Machine Co., Ltd.		
Crimping machine	LPC220S		
Applicators	CFX020200K	CFX020100K	QFX021900K

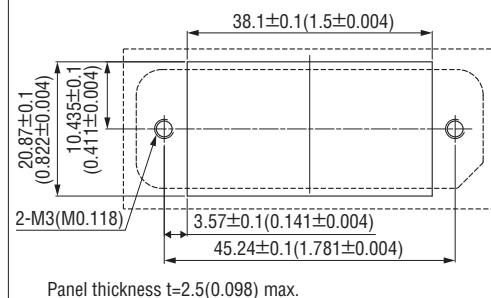
※A crimping machine and applicator can be for purchased from Nippon Automatic Machine Co., Ltd.

FTC01-12 (Receptacle, Cable side connector)

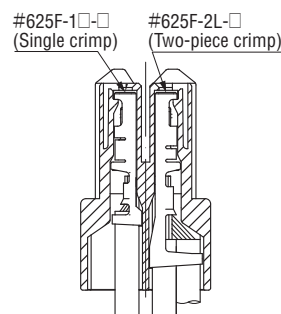
Unit : mm(inch)



Panel Layout(Component Side View)



X-X' Cross Section (Contact is inserted)



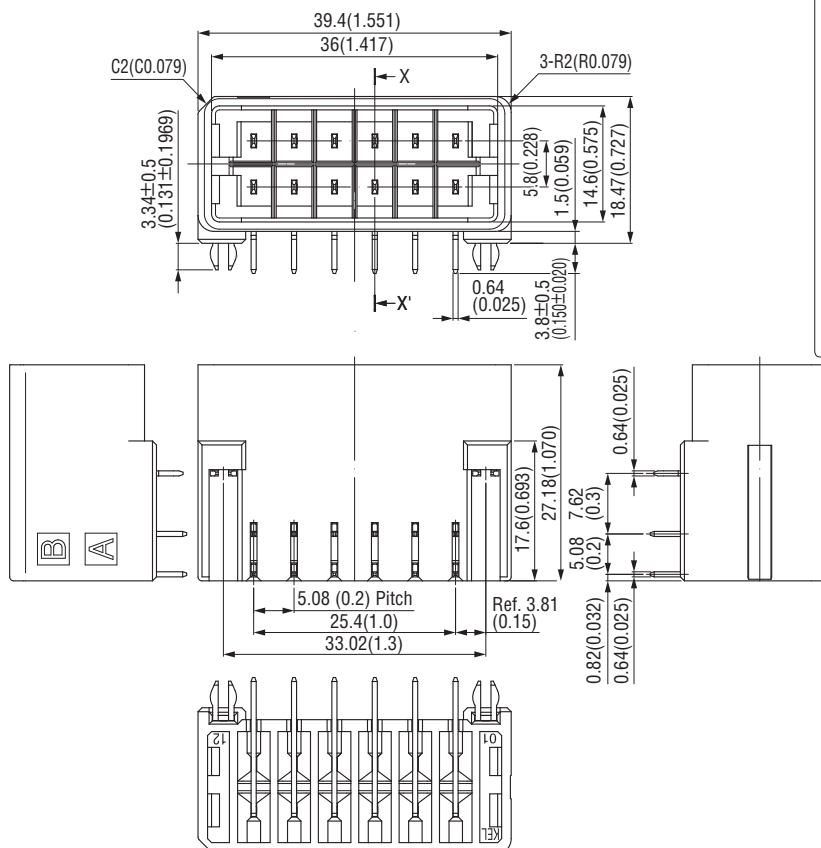
Packaging style
Tray

Product Table

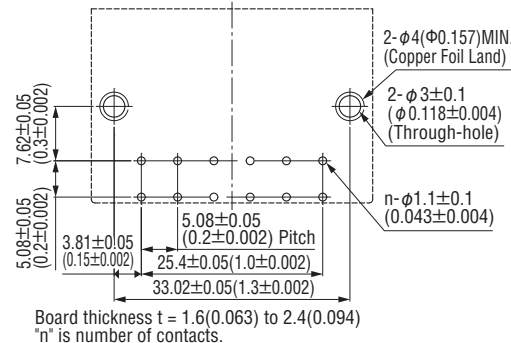
No. of contacts	Part Number	Number of packaging
12	FTC01-12	36

FTC11-12LF (Plug, PCB side connector)

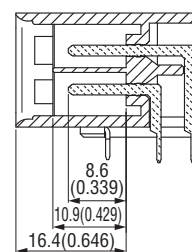
Unit : mm(inch)



Printed Curicuit Board Layout (Component Side View)



X-X' Cross Section



Packaging style
Pipe

Product Table

No. of contacts	Part Number	Number of packaging
12	FTC11-12LF	12