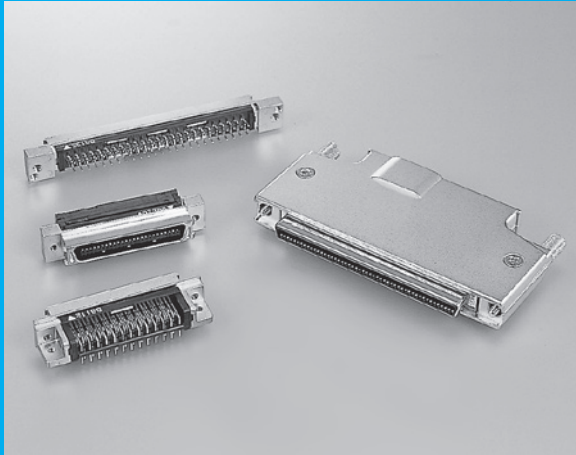


8840 / 8850 / 8855 SERIES

1.27mm PITCH I/O CONNECTOR

RoHS
Compliant



FEATURES

- ▶ Easy to use one-touch latch for models with 20 - 80 pins (100pin: Lock screw)
- ▶ With a completely-independent two-point contact system, a stable contact pressure is maintained at all times.
- ▶ Diecast cover controls EMI.
- ▶ D-shape housing prevents mis-insertion.
- ▶ Insulator prevents deformation of contact.
- ▶ Flat cable version of 8855 Series is available.

ORDER CODE

8840---**-174** **D-F**

① ② ③ ④ ⑤ ⑥

*Please order in multiples of the quantity per package.

- ① **[Type] 8840**: Receptacle (Cable side connector)
- ② **[Number of contacts]** 020: 20pin 028: 28pin 034: 34pin 050: 50pin 060: 60pin 068: 68pin 080: 80pin 100: 100pin
- ③ **[Contact name]** 174
- ④ **[Recommended cable]** A: #28 AWG (7/0.127) Discrete wire cable B: #28 AWG (7/0.127) Laminated wire cable
C: #30 AWG (7/0.10) Discrete wire cable* D: #30 AWG (7/0.10) Laminated wire cable*
- ⑤ **[Plating of contact area]** D: 0.25 μm min.
- ⑥ **[RoHS]** F: RoHS compliant

If you would like a C or D type connector, please contact your local KEL sales office.

ORDER CODE

8850---**-170** **D-F**

① ② ③ ④ ⑤ ⑥

*Please order in multiples of the quantity per package.

- ① **[Type] 8850**: Plug (PCB side connector)
- ② **[Number of contacts]** 020: 20pin 028: 28pin 034: 34pin 050: 50pin 060: 60pin 068: 68pin 080: 80pin 100: 100pin
- ③ **[Contact name]** 170
- ④ **[Contact tail style]** S: Straight L: Right angle
- ⑤ **[Plating of contact area]** D: 0.25 μm min.
- ⑥ **[RoHS]** F: RoHS compliant

ORDER CODE

8855---**-174** **D-F**

① ② ③ ④ ⑤ ⑥

*Please order in multiples of the quantity per package.

- ① **[Type] 8855**: Plug (Cable plug)
- ② **[Number of contacts]** 020: 20pin 028: 28pin 034: 34pin 050: 50pin 060: 60pin 068: 68pin 080: 80pin 100: 100pin
- ③ **[Contact name]** 174
- ④ **[Recommended cable]** A: #28 AWG (7/0.127) Discrete wire cable B: #28 AWG (7/0.127) Laminated wire cable
C: #30 AWG (7/0.10) Discrete wire cable* D: #30 AWG (7/0.10) Laminated wire cable* F: #28 AWG (7/0.127) Flat ribbon cable
- ⑤ **[Contact tail style]** D: 0.25 μm min.
- ⑥ **[RoHS]** F: RoHS compliant

If you would like a C or D type connector, please contact your local KEL sales office.

SPECIFICATIONS

Material and plating		Electrical Characteristics	
Insulator material	Glass-filled Nylon 66 (UL94V-0), Black	Current rating	0.5A per contact
Contact material	Copper alloy	Contact resistance	30mΩ max.
Contact plating	[8840/8855]Gold over Nickel	Dielectric withstanding voltage	650V AC for 1 minute
	[8850](Contact area) Gold over Nickel	Insulation resistance	1,000MΩ min. at 500V DC
	(Terminal area) Tin copper over Nickel	Operating temperature	-55°C to +85°C
Metal shell material	Steel	Recommended cable	#28 AWG(7/0.127) Outer diameter of insulation : 0.58mm
Metal shell plating	Nickel over Copper		
Diecast shell material	[8850/8855]Zinc alloy		

Diecast cover for 8840

ORDER CODE

8840S - - **CVR**

① ② ③

*Please order in multiples of the quantity per package.

- ① **[Diecast cover type] 8840S** : Cover for straight cable exit
- ② **[Number of contacts] 020** : 20pin **028** : 28pin **034** : 34pin
050 : 50pin **060** : 60pin **068** : 68pin **080** : 80pin **100** : 100pin
- ③ **[Mounted panel thickness] (Only 100 pin)**
1 : No panel **2** : 0.8~1.0mm **3** : 1.6mm
Not to be specified as the 20 to 80 pin types due to a spring lock system

*Connectors and diecast cover are required when you use a 20 to 80 pin type 8840 Series connector.

SPECIFICATIONS

Material and plating	
Diecast cover	[20-80 pin] Zinc alloy [100 pin] Aluminum
Diecast cover plating	Nickel over Copper
Spring lock material	Stainless steel
Lock screw material	Steel Copper plating
Lock screw plating	Nickel over Copper
Cable clamp material	Stainless steel

Lock Nut(100pin connector only)

ORDER CODE

8850-SR -

① ②

*Lock nuts are sold in pairs. *Please order in multiples of the quantity per package.

- ① **[Lock nut] 8850-SR** : Lock nut for 8850
- ② **[Panel thickness] 01** : No panel **02** : 1.0mm **03** : 1.6mm **05** : 0.8mm

*Connectors and lock nuts are required when you use a 100 pin type 8850/8855 Series connector.

*The connector may be adjusted to a panel thickness not listed above. If you consider using one for such a panel, please feel free to contact us.

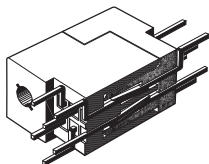
SPECIFICATIONS

Material and plating	
Lock nut material	Steel
Lock nut plating	Nickel over Copper

Contact Concept (Contacts with 2 mating points straight-beam construction)

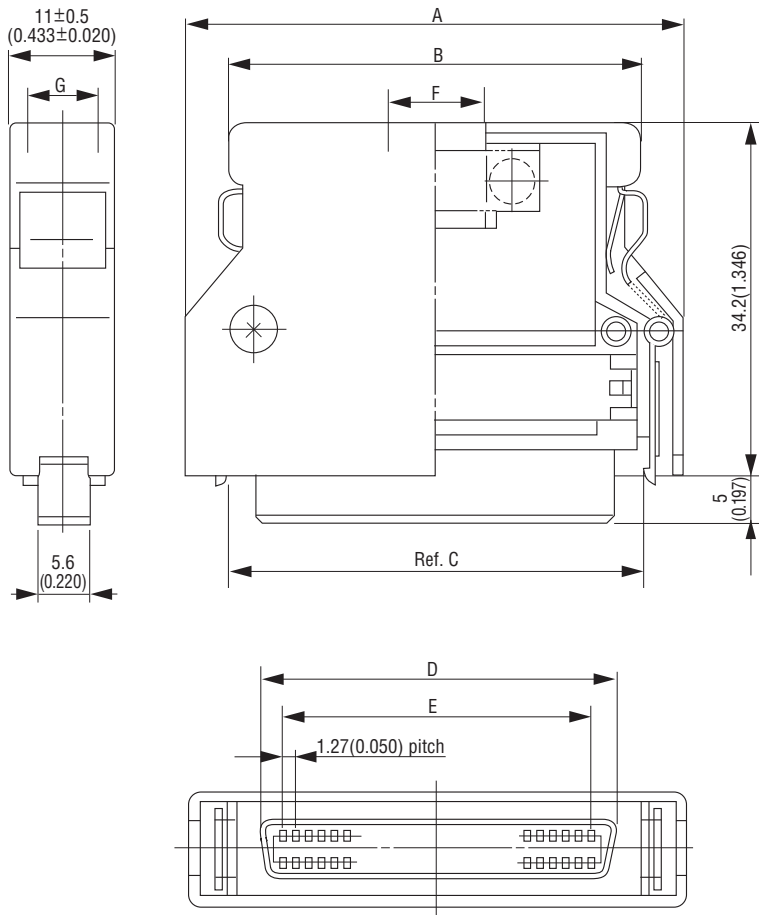
◆ Outline

KEL has developed a unique straight beam contact with two independent mating points for male and female half pitch connectors which offers low insertion and withdrawal forces with high reliability. In response to the rapidly changing requirements for connectors, from card edge to standard pitch two piece to half pitch two piece, KEL offers these connectors for today's requirement for high density and reliability.



◆ Key Features

- With a completely-independent two-point contact system, a stable contact pressure is maintained at all times.
- Contact surface is smooth and tapered to reduce insertion and withdrawal forces and increase connector life.
- Lower cost due to same contact is used for both male and female connectors.
- Mating process of contact is self-cleaning with a long wiping area.
- Insulator aligns the mating connectors, prevents mis-insertion and protects the contacts from bending and breakage.



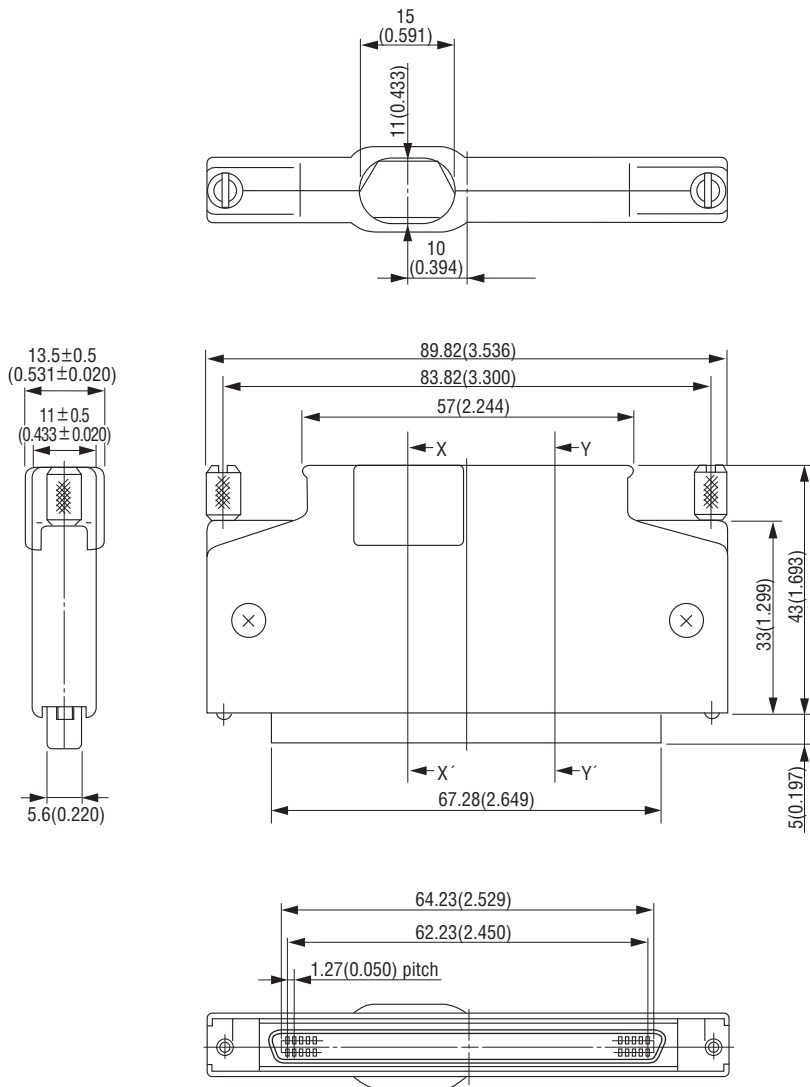
In the product drawing, the connector body (receptacle) is combined with a diecast cover.
 When placing your order, please note that the connector (8840-□□-174□D-F) and the diecast cover (8840S-□□□-CVR) must be ordered separately.

Packaging style

Other

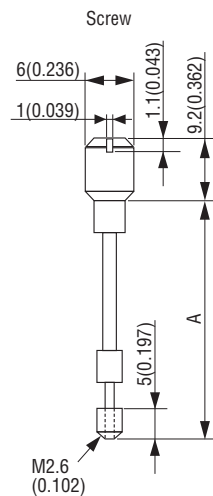
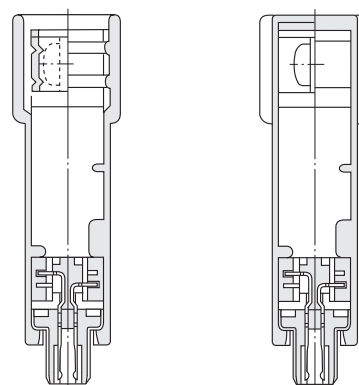
Product Table / Dimensions

No. of contacts	Part Number	A	B	C	D	E	F	G	Number of packaging
20	8840-020-174□D-F 8840S-020-CVR	30.00 (1.181)	22.30 (0.878)	21.3 (0.839)	16.48 (0.649)	11.43 (0.450)	6.7 (0.264)	6.7 (0.264)	80
28	8840-028-174□D-F 8840S-028-CVR	35.08 (1.381)	27.38 (1.078)	26.4 (1.039)	21.56 (0.849)	16.51 (0.650)	7.5 (0.295)	7.5 (0.295)	80
34	8840-034-174□D-F 8840S-034-CVR	38.89 (1.531)	31.19 (1.228)	30.2 (1.189)	25.37 (0.999)	20.32 (0.800)	8.7 (0.343)	8.7 (0.343)	80
50	8840-050-174□D-F 8840S-050-CVR	49.05 (1.931)	41.35 (1.628)	40.4 (1.591)	35.53 (1.399)	30.48 (1.200)	10.0 (0.394)	8.5 (0.335)	50
60	8840-060-174□D-F 8840S-060-CVR	55.40 (2.181)	47.70 (1.878)	46.7 (1.839)	41.88 (1.649)	36.83 (1.450)	11.0 (0.433)	8.5 (0.335)	50
68	8840-068-174□D-F 8840S-068-CVR	60.48 (2.381)	52.78 (2.078)	51.8 (2.039)	46.96 (1.849)	41.91 (1.650)	12.0 (0.472)	8.5 (0.335)	50
80	8840-080-174□D-F 8840S-080-CVR	68.10 (2.681)	60.40 (2.378)	59.4 (2.339)	54.58 (2.149)	49.53 (1.950)	13.0 (0.512)	8.5 (0.335)	50



X-X' Cross Section

Y-Y' Cross Section



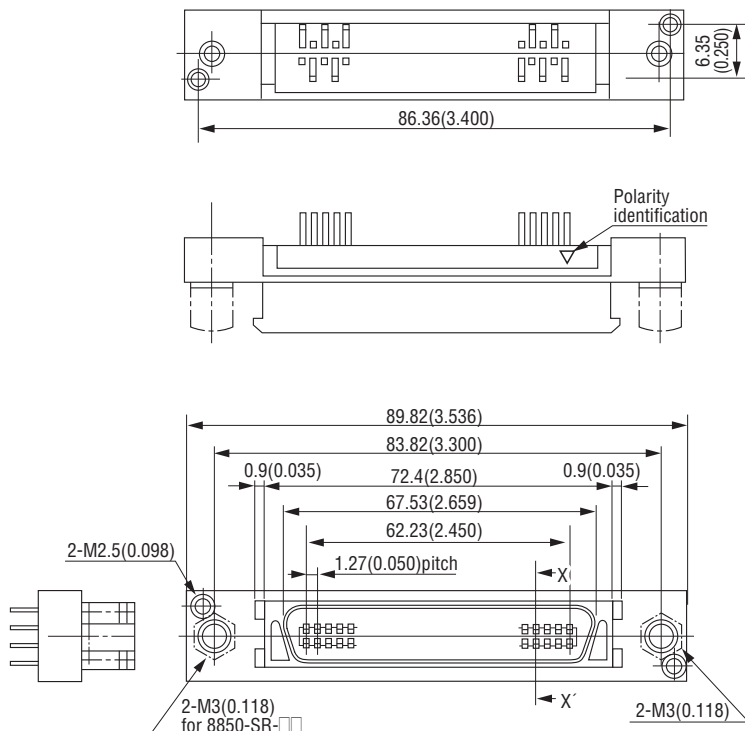
In the product drawing, the connector body (receptacle) is combined with a diecast cover. When placing your order, please note that the connector (8840-□□-174□D-F) and the diecast cover (8840S-□□□-CVR) must be ordered separately.

Packaging style

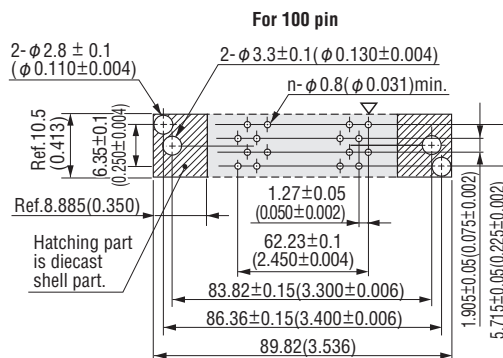
Other

▶ Product Table / Dimensions

Part Number	Mounted Panel Thickness	A	Number of packaging
8840-100-174□D-F 8840S-100-1-CVR	No Panel	33.8 (1.331)	50
8840-100-174□D-F 8840S-100-2-CVR	0.8~1.0mm	33.3 (1.311)	50
8840-100-174□D-F 8840S-100-3-CVR	1.6mm	32.8 (1.291)	50



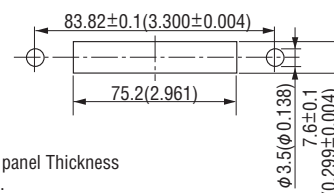
Printed Circuit Board Layout (Component Side View)



Recommended PCB Thickness $t1.6 \pm 0.19 (0.063 \pm 0.007)$

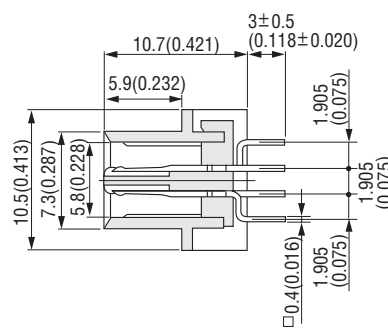
▽ = Polarity identification "n" is number of contacts.

Panel Cutout For 100 pin



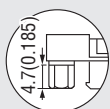
Recommended panel Thickness $t2.0 (0.079) \text{max.}$

X-X' Cross Section

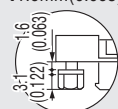


Nut for Lock Screw

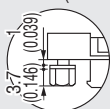
8850-SR-01
(Without mounting panel)



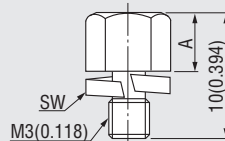
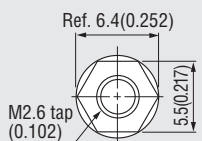
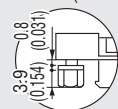
8850-SR-03
mounting panel
t1.6mm(0.063)



8850-SR-02
mounting panel
t1.0mm(0.039)



8850-SR-05
mounting panel
t0.8mm(0.031)



A	Part Number
4.7(0.185)	01(t 0)
3.7(0.146)	02(t1.0)
3.1(0.122)	03(t1.6)
3.9(0.154)	05(t1.0)

Packaging style

Pipe

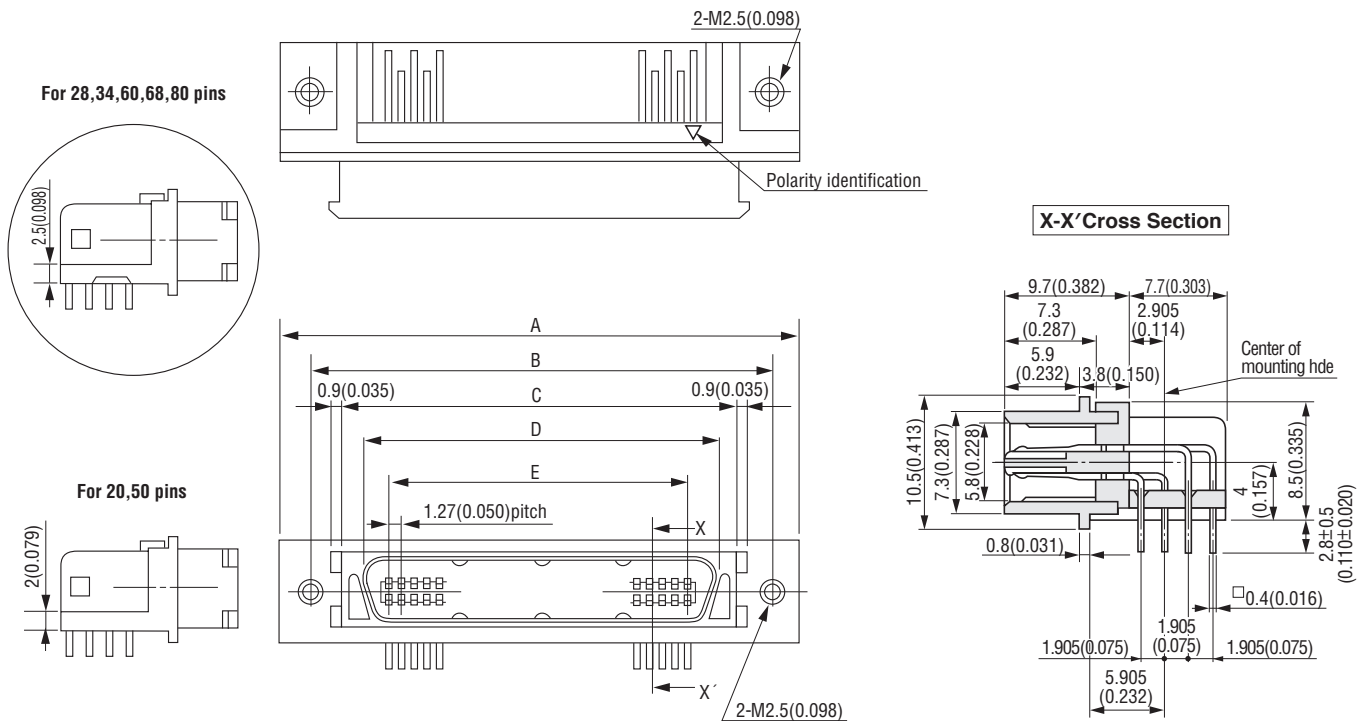
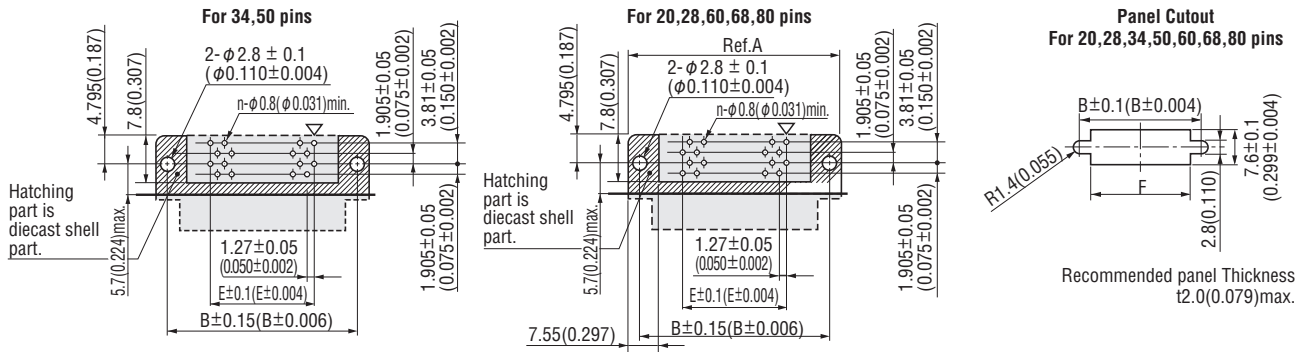
Product Table

No. of contacts	Part Number	Number of packaging
100	8850-100-170SD-F	5

8850-□□□-170LD-F (Plug, PCB side connector, Right angle, 20-80 pin)

Unit : mm (inch)

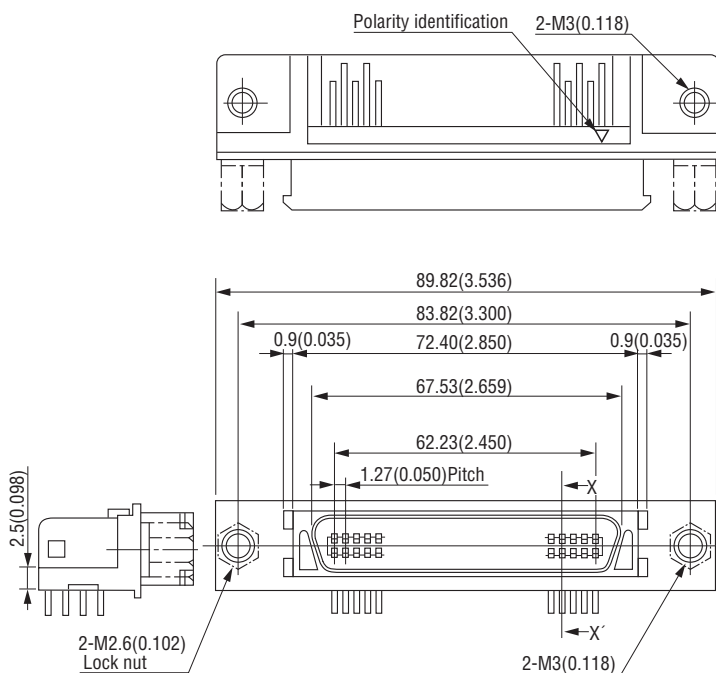
Printed Circuit Board Layout (Component Side View)



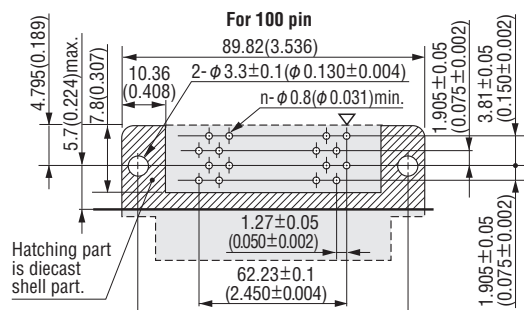
Packaging style
Pipe

Product Table / Dimensions

No. of contacts	Part Number	A	B	C	D	E	F	Number of packaging
20	8850-020-170LD-F	33.40 (1.315)	27.40 (1.079)	21.60 (0.850)	16.73 (0.659)	11.43 (0.450)	24.40 (0.961)	14
28	8850-028-170LD-F	38.48 (1.515)	32.48 (1.279)	26.68 (1.050)	21.81 (0.859)	16.51 (0.650)	29.48 (1.161)	13
34	8850-034-170LD-F	42.29 (1.665)	36.29 (1.429)	30.49 (1.200)	25.62 (1.009)	20.32 (0.800)	33.29 (1.311)	11
50	8850-050-170LD-F	52.45 (2.065)	46.45 (1.829)	40.65 (1.600)	35.78 (1.409)	30.48 (1.200)	43.45 (1.711)	9
60	8850-060-170LD-F	58.80 (2.315)	52.80 (2.079)	47.00 (1.850)	42.13 (1.659)	36.83 (1.450)	49.80 (1.961)	8
68	8850-068-170LD-F	63.88 (2.515)	57.88 (2.279)	52.08 (2.050)	47.21 (1.859)	41.91 (1.650)	54.88 (2.161)	7
80	8850-080-170LD-F	71.50 (2.815)	65.50 (2.579)	59.70 (2.350)	54.83 (2.159)	49.53 (1.950)	62.50 (2.461)	7



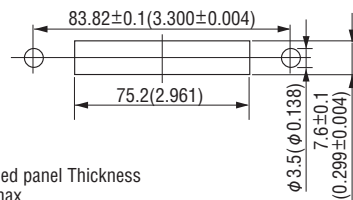
Printed Circuit Board Layout (Component Side View)



Recommended PCB Thickness $t1.6\pm 0.19(0.063\pm 0.007)$

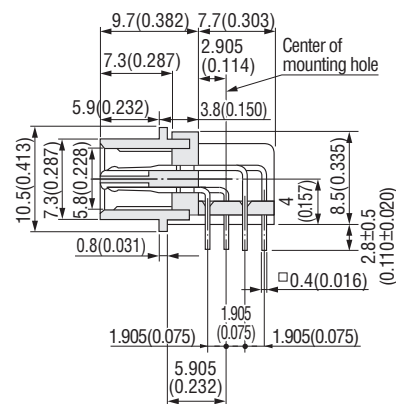
▽=Polarity identification "n" is number of contacts.

Panel Cutout For 100 pin



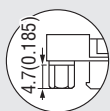
Recommended panel Thickness $t1.6(0.063)\text{max.}$

X-X' Cross Section

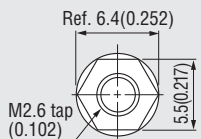
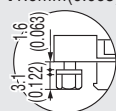


Nut for Lock Screw

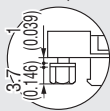
8850-SR-01
(Without mounting panel)



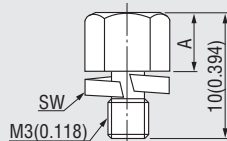
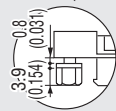
8850-SR-03
mounting panel
t1.6mm(0.063)



8850-SR-02
mounting panel
t1.0mm(0.039)



8850-SR-05
mounting panel
t0.8mm(0.031)



A	Part Number
4.7(0.185)	01(t 0)
3.7(0.146)	02(t 1.0)
3.1(0.122)	03(t 1.6)
3.9(0.154)	05(t 0.8)

Packaging style

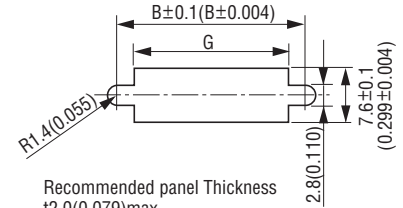
Pipe

Product Table

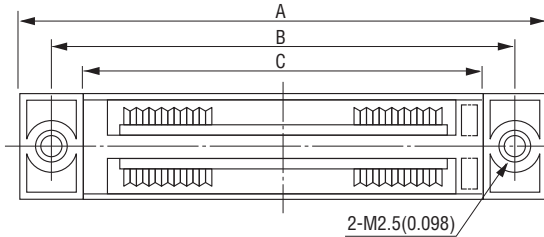
No. of contacts	Part Number	Number of packaging
100	8850-100-170LD-F	5

▶ Panel Cutout

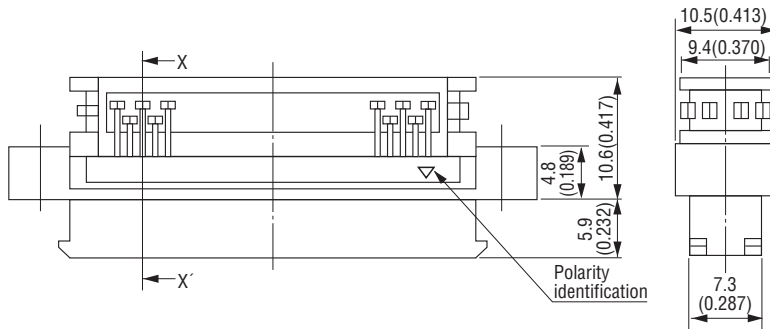
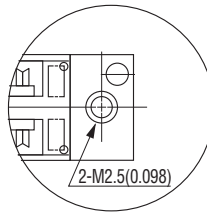
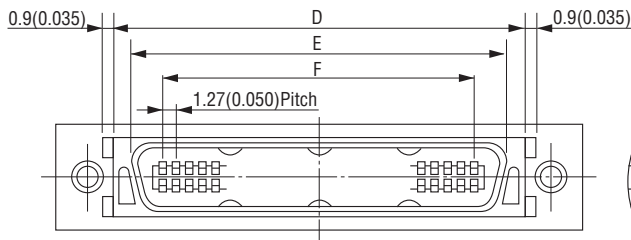
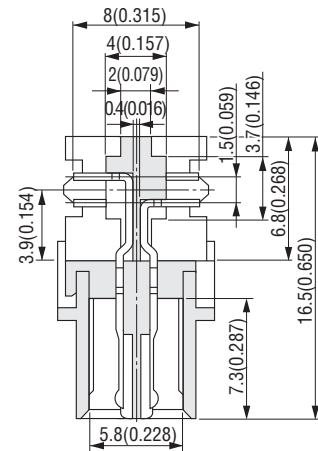
For 20,28,34,50,60,68,80 pins



For 20,50 pins



For 28,34,60,68,80 pins

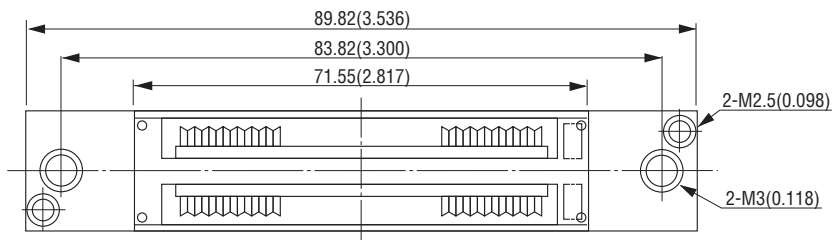

X-X' Cross Section


Packaging style

Pipe

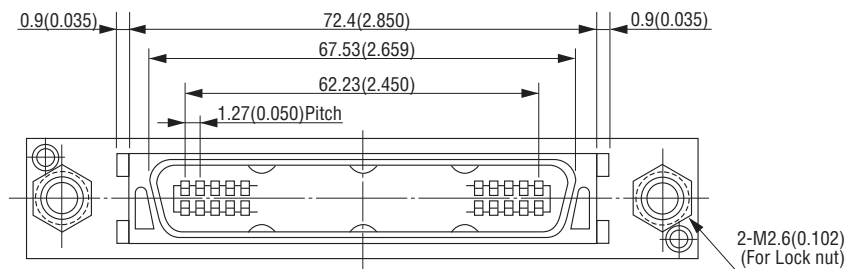
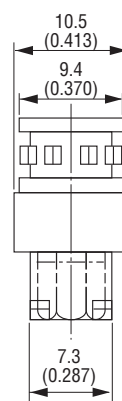
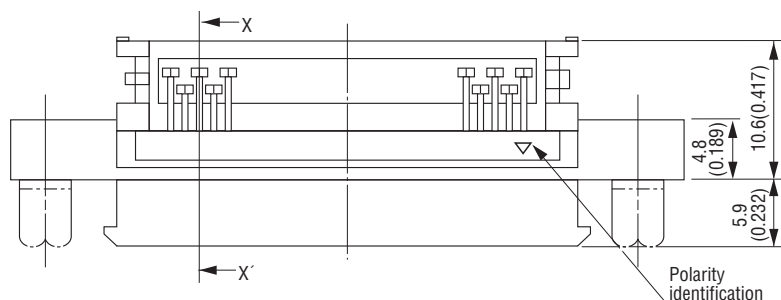
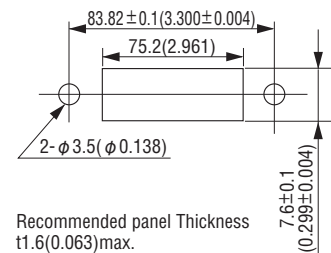
▶ Product Table / Dimensions

No. of contacts	Part Number	A	B	C	D	E	F	G	Number of packaging
20	8855-020-174□D-F	33.40 (1.315)	27.40 (1.079)	20.75 (0.817)	21.60 (0.850)	16.73 (0.659)	11.43 (0.450)	24.40 (0.961)	14
28	8855-028-174□D-F	38.48 (1.515)	32.48 (1.279)	25.83 (1.017)	26.68 (1.050)	21.81 (0.859)	16.51 (0.650)	29.48 (1.161)	13
34	8855-034-174□D-F	42.29 (1.665)	36.29 (1.429)	29.64 (1.167)	30.49 (1.200)	25.62 (1.009)	20.32 (0.800)	33.29 (1.311)	11
50	8855-050-174□D-F	52.45 (2.065)	46.45 (1.829)	39.80 (1.567)	40.65 (1.600)	35.78 (1.409)	30.48 (1.200)	43.45 (1.711)	9
60	8855-060-174□D-F	58.80 (2.315)	52.80 (2.079)	46.15 (1.817)	47.00 (1.850)	42.13 (1.659)	36.83 (1.450)	49.80 (1.961)	8
68	8855-068-174□D-F	63.88 (2.515)	57.88 (2.279)	51.23 (2.017)	52.08 (2.050)	47.21 (1.859)	41.91 (1.650)	54.88 (2.161)	7
80	8855-080-174□D-F	71.50 (2.815)	65.50 (2.579)	58.85 (2.317)	59.70 (2.350)	54.83 (2.159)	49.53 (1.950)	62.50 (2.461)	7

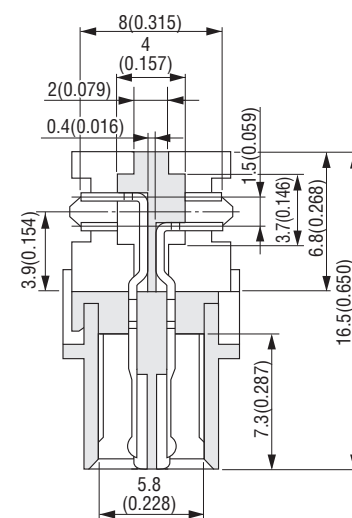


Panel Cutout

For 100 pins



X-X' Cross Section



Packaging style

Pipe

Product Table

No. of contacts	Part Number	Number of packaging
100	8855-100-174□D-F	5

CABLE ASSEMBLY

ORDER CODE

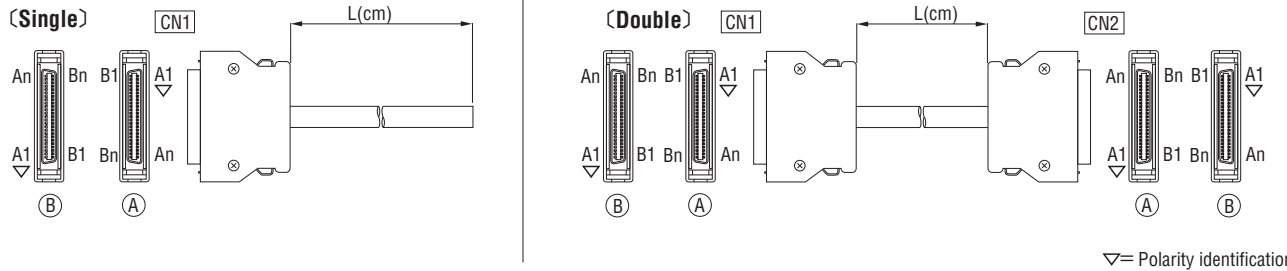
Cable side connector(20~80 pin)

8840S- -**174** **DF**-

1
2
3
4
5
6
7
8
9
10

- ① **[Diecast cover]** **8840S**: Straight cable exit
- ② **[Number of contacts]** **020**: 20pin **028**: 28pin **034**: 34pin **050**: 50pin **060**: 60pin **068**: 68pin **080**: 80pin
- ③ **[Contact name]** **174**
- ④ **[Recommended cable]** **A**: #28 AWG (7/0.127) Discrete wire cable **B**: #28 AWG (7/0.127) Laminated wire cable
- ⑤ **[Plating of contact area]** **D**: 0.25μm min.
- ⑥ **[RoHS]** **F**: RoHS compliant
- ⑦ **[Cable length(cm)]** **L**: (Example: 008=8cm)
- ⑧ **[Wiring code]** **S**: Single **W**: Double
- ⑨ **[Connector direction]** Left:CN1,Right:CN2 (W:Double) **1**: AA **2**: AB **3**: BA **4**: BB (S:Single) **5**: A **6**: B
- ⑩ **[Wiring identifier]** **H**: Standard wiring **J**: Semi-standard wiring

► Cable assemblies



ORDER CODE

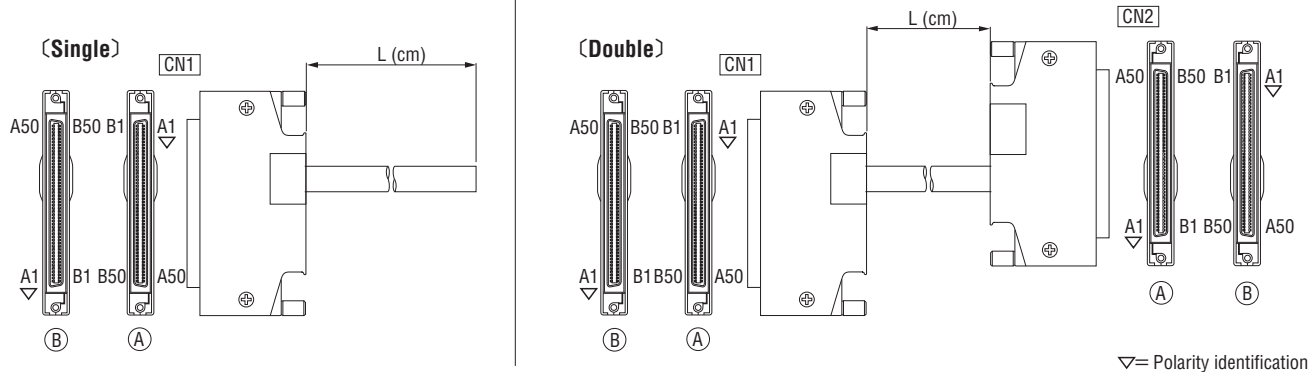
Cable side connector(100 pin)

8840S-**100**-**174** **DF** -

1
2
3
4
5
6
7
8
9
10
11

- ① **[Diecast cover]** **8840S**: Straight cable exit
- ② **[Number of contacts]** **100**: 100pin
- ③ **[Contact name]** **174**
- ④ **[Recommended cable]** **A**: #28 AWG (7/0.127) Discrete wire cable **B**: #28 AWG (7/0.127) Laminated wire cable
- ⑤ **[Plating of contact area]** **D**: 0.25μm min.
- ⑥ **[RoHS]** **F**: RoHS compliant
- ⑦ **[Mounting panel thickness]** **1**: No panel **2**: Panel thickness from 0.8~1.0mm **3**: Panel thickness of 1.6mm
- ⑧ **[Cable length(cm)]** **L**: (Example: 008=8cm)
- ⑨ **[Wiring code]** **S**: Single **W**: Double
- ⑩ **[Connector direction]** Left:CN1,Right:CN2 (W:Double) **1**: AA **2**: AB **3**: BA **4**: BB (S:Single) **5**: A **6**: B
- ⑪ **[Wiring identifier]** **H**: Standard wiring **J**: Semi-standard wiring

► Cable assemblies



For harness quotations, please contact your local KEL sales office.
For S (Wiring Code), orders are accepted in even quantities.

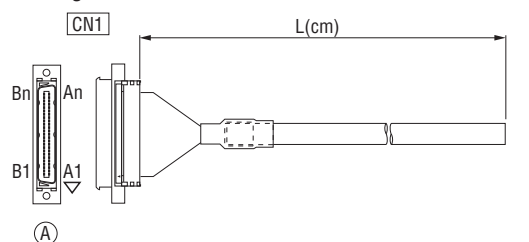
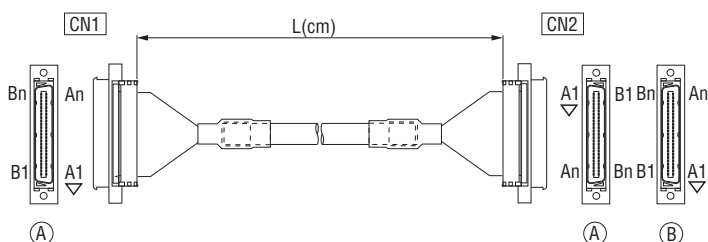
ORDER CODE

Cable Plug

8855- **-174** **DF-**

① ② ③ ④ ⑤ ⑥ ⑦ ⑧ ⑨ ⑩

- ① **[Type] 8855** : Straight cable exit
- ② **[Number of contacts]** **020** : 20pin **028** : 28pin **034** : 34pin **050** : 50pin **060** : 60pin **068** : 68pin **080** : 80pin **100** : 100pin
- ③ **[Contact name]** **174**
- ④ **[Recommended cable]** **A** : #28 AWG (7/0.127) Discrete wire cable **B** : #28 AWG (7/0.127) Laminated wire cable
- ⑤ **[Plating of contact area]** **D** : 0.25μm min.
- ⑥ **[RoHS]** **F** : RoHS compliant
- ⑦ **[Cable length(cm)]** **L** : (Example: 013=13cm)
- ⑧ **[Wiring code]** **S** : Single **W** : Double
- ⑨ **[Connector direction]** Left:CN1,Right:CN2 (W:Double) **1** : AA **2** : AB (S:Single) **5** : A
- ⑩ **[Wiring identifier]** **H** : Standard wiring **J** : Semi-standard wiring

► Cable assemblies
(Single)

(Double)


▽= Polarity identification

For harness quotations, please contact your local KEL sales office.
For S(Wiring Code), orders are accepted in even quantities.

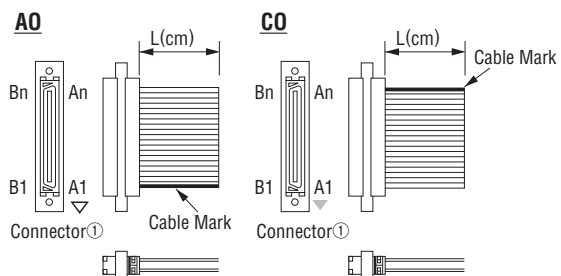
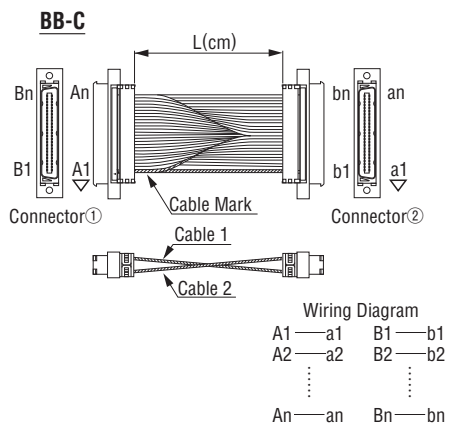
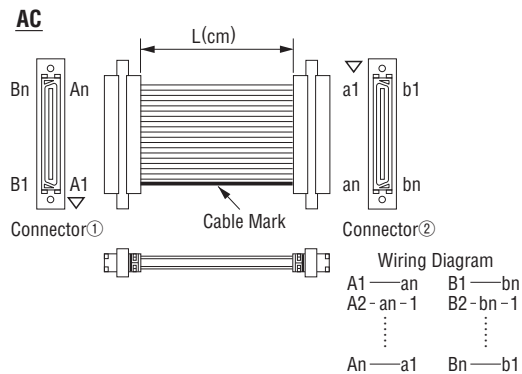
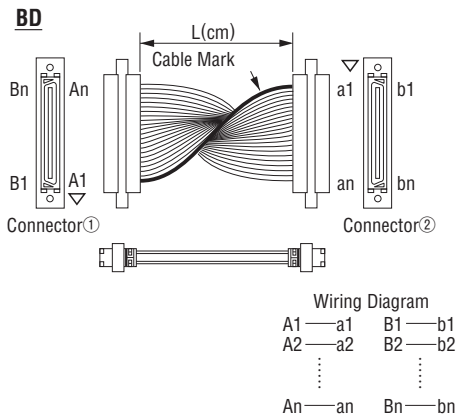
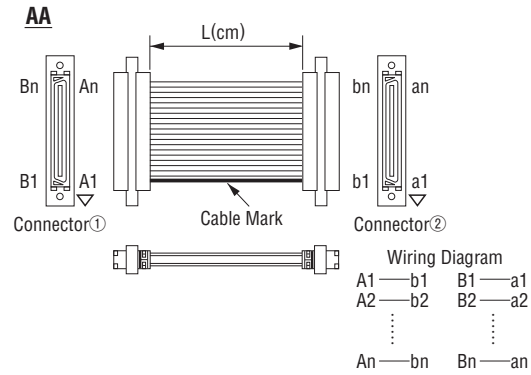
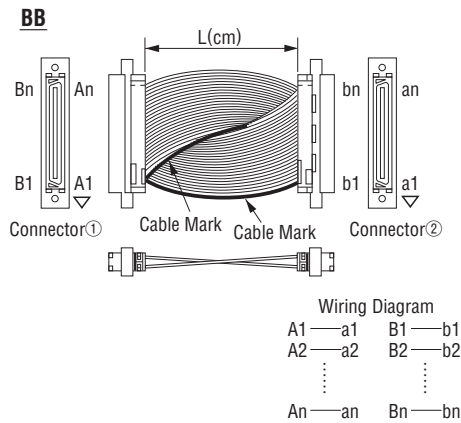
ORDER CODE

Cable plug(Flat ribbon type)

8855- **-174 FDF-**
1 2 3 4 5 6 7 8 9 10

- ① **[Type]** 8855 : Cable plug
- ② **[Number of contacts]** 020 : 20pin 028 : 28pin 034 : 34pin 050 : 50pin 060 : 60pin 068 : 68pin 080 : 80pin 100 : 100pin
- ③ **[Contact name]** 174
- ④ **[Recommended cable]** F : #28 AWG (7/0.127) Flat cable
- ⑤ **[Plating of contact area]** D : 0.25 μ m or min.(Standard)
- ⑥ **[RoHS]** F : RoHS compliant
- ⑦ **[Cable length(cm)]** L : (Example: 013=13cm)
- ⑧ **[Cable type]** Omit : Flat cable(Standard) S : Intermittent bonded cable* T : Twist&Flat cable*
- ⑨ **[Wiring code]** AA,AC,BB,BD,AO,CO
- ⑩ **[Wiring type]** Omit : Twist type C : Through type(Wiring code : BB)

Only flat and twisted-flat cables are available for BB and BD-wired products.
 Flat and twisted-flat cables have a limited L dimension as they are IDC at the fused connections.

► Cable assemblies


▽= Polarity identification

8840/8855 Standard Wiring Table

Standard wiring table (20 pin)

Wire No.	Twist No.	Wire Color	Mark Color	Marking	CN1 Pin No.	CN2 Pin No.
1		Orange	Red		A1	A1
2	1	Orange	Black		A2	A2
3		Gray	Red		A3	A3
4	2	Gray	Black		A4	A4
5		White	Red		A5	A5
6	3	White	Black		A6	A6
7		Yellow	Red		A7	A7
8	4	Yellow	Black		A8	A8
9		Pink	Red		A9	A9
10	5	Pink	Black		A10	A10
11		Orange	Red	:	B1	B1
12	6	Orange	Black	:	B2	B2
13		Gray	Red		B3	B3
14	7	Gray	Black		B4	B4
15		White	Red		B5	B5
16	8	White	Black		B6	B6
17		Yellow	Red		B7	B7
18	9	Yellow	Black		B8	B8
19		Pink	Red		B9	B9
20	10	Pink	Black		B10	B10

Standard wiring table (28 pin)

Wire No.	Twist No.	Wire Color	Mark Color	Marking	CN1 Pin No.	CN2 Pin No.
1		Orange	Red		A1	A1
2	1	Orange	Black		A2	A2
3		Gray	Red		A3	A3
4	2	Gray	Black		A4	A4
5		White	Red		A5	A5
6	3	White	Black		A6	A6
7		Yellow	Red		A7	A7
8	4	Yellow	Black		A8	A8
9		Pink	Red		A9	A9
10	5	Pink	Black		A10	A10
11		Orange	Red	:	A11	A11
12	6	Orange	Black	:	A12	A12
13		Gray	Red		A13	A13
14	7	Gray	Black		A14	A14
15		White	Red		B1	B1
16	8	White	Black		B2	B2
17		Yellow	Red		B3	B3
18	9	Yellow	Black		B4	B4
19		Pink	Red		B5	B5
20	10	Pink	Black		B6	B6
21		Orange	Red	:	B7	B7
22	11	Orange	Black	:	B8	B8
23		Gray	Red		B9	B9
24	12	Gray	Black		B10	B10
25		White	Red		B11	B11
26	13	White	Black		B12	B12
27		Yellow	Red		B13	B13
28	14	Yellow	Black		B14	B14

Standard wiring table (34 pin)

Wire No.	Twist No.	Wire Color	Mark Color	Marking	CN1 Pin No.	CN2 Pin No.
1		Orange	Red		A1	A1
2	1	Orange	Black		A2	A2
3		Gray	Red		A3	A3
4	2	Gray	Black		A4	A4
5		White	Red		A5	A5
6	3	White	Black		A6	A6
7		Yellow	Red		A7	A7
8	4	Yellow	Black		A8	A8
9		Pink	Red		A9	A9
10	5	Pink	Black		A10	A10
11		Orange	Red	:	A11	A11
12	6	Orange	Black	:	A12	A12
13		Gray	Red		A13	A13
14	7	Gray	Black		A14	A14
15		White	Red		A15	A15
16	8	White	Black		A16	A16
17		Yellow	Red		A17	A17
18	9	Yellow	Black		B1	B1
19		Pink	Red		B2	B2
20	10	Pink	Black		B3	B3
21		Orange	Red	:	B4	B4
22	11	Orange	Black	:	B5	B5
23		Gray	Red		B6	B6
24	12	Gray	Black		B7	B7
25		White	Red		B8	B8
26	13	White	Black		B9	B9
27		Yellow	Red		B10	B10
28	14	Yellow	Black		B11	B11
29		Pink	Red		B12	B12
30	15	Pink	Black		B13	B13
31		Orange	Red	:	B14	B14
32	16	Orange	Black	:	B15	B15
33		Gray	Red		B16	B16
34	17	Gray	Black		B17	B17
35		White	Red			
36	18	White	Black			

Standard wiring table (80 pin)

Wire No.	Twist No.	Wire Color	Mark Color	Marking	CN1 Pin No.	CN2 Pin No.	Wire No.	Twist No.	Wire Color	Mark Color	Marking	CN1 Pin No.	CN2 Pin No.
1		Orange	Red		A1	A1	41	21	Orange	Red		B1	B1
2	1	Orange	Black		A2	A2	42		Orange	Black		B2	B2
3		Gray	Red		A3	A3	43	22	Gray	Red		B3	B3
4	2	Gray	Black		A4	A4	44		Gray	Black		B4	B4
5		White	Red		A5	A5	45	23	White	Red		B5	B5
6	3	White	Black		A6	A6	46		White	Black		B6	B6
7		Yellow	Red		A7	A7	47	24	Yellow	Red		B7	B7
8	4	Yellow	Black		A8	A8	48		Yellow	Black		B8	B8
9		Pink	Red		A9	A9	49	25	Pink	Red		B9	B9
10	5	Pink	Black		A10	A10	50		Pink	Black		B10	B10
11		Orange	Red	:	A11	A11	51	26	Orange	Red		B11	B11
12	6	Orange	Black	:	A12	A12	52		Orange	Black		B12	B12
13		Gray	Red		A13	A13	53	27	Gray	Red		B13	B13
14	7	Gray	Black		A14	A14	54		Gray	Black		B14	B14
15		White	Red		A15	A15	55	28	White	Red		B15	B15
16	8	White	Black		A16	A16	56		White	Black		B16	B16
17		Yellow	Red		A17	A17	57	29	Yellow	Red		B17	B17
18	9	Yellow	Black		A18	A18	58		Yellow	Black		B18	B18
19		Pink	Red		A19	A19	59	30	Pink	Red		B19	B19
20	10	Pink	Black		A20	A20	60		Pink	Black		B20	B20
21		Orange	Red	:	A21	A21	61	31	Orange	Red		B21	B21
22	11	Orange	Black	:	A22	A22	62		Orange	Black		B22	B22
23		Gray	Red		A23	A23	63	32	Gray	Red		B23	B23
24	12	Gray	Black		A24	A24	64		Gray	Black		B24	B24
25		White	Red		A25	A25	65	33	White	Red		B25	B25
26	13	White	Black		A26	A26	66		White	Black		B26	B26
27		Yellow	Red		A27	A27	67	34	Yellow	Red		B27	B27
28	14	Yellow	Black		A28	A28	68		Yellow	Black		B28	B28
29		Pink	Red		A29	A29	69	35	Pink	Red		B29	B29
30	15	Pink	Black		A30	A30	70		Pink	Black		B30	B30
31		Orange	Red	:	A31	A31	71	36	Orange	Red		B31	B31
32	16	Orange	Black	:	A32	A32	72		Orange	Black		B32	B32
33		Gray	Red		A33	A33	73	37	Gray	Red		B33	B33
34	17	Gray	Black		A34	A34	74		Gray	Black		B34	B34
35		White	Red		A35	A35	75	38	White	Red		B35	B35
36	18	White	Black		A36	A36	76		White	Black		B36	B36
37		Yellow	Red		A37	A37	77	39	Yellow	Red		B37	B37
38	19	Yellow	Black		A38	A38	78		Yellow	Black		B38	B38
39		Pink	Red		A39	A39	79	40	Pink	Red		B39	B39
40	20	Pink	Black		A40	A40	80		Pink	Black		B40	B40

Standard wiring table (60 pin)

Wire No.	Twist No.	Wire Color	Mark Color	Marking	CN1 Pin No.	CN2 Pin No.
1		Orange	Red		A1	A1
2	1	Orange	Black		A2	A2
3		Gray	Red		A3	A3
4	2	Gray	Black		A4	A4
5		White	Red		A5	A5
6	3	White	Black		A6	A6
7		Yellow	Red		A7	A7
8	4	Yellow	Black		A8	A8
9		Pink	Red		A9	A9
10	5	Pink	Black		A10	A10
11		Orange	Red	:	A11	A11
12	6	Orange	Black	:	A12	A12
13		Gray	Red		A13	A13
14	7	Gray	Black		A14	A14
15		White	Red		A15	A15
16	8	White	Black		A16	A16
17		Yellow	Red		A17	A17
18	9	Yellow	Black		A18	A18
19		Pink	Red		A19	A19
20	10	Pink	Black		A20	A20
21		Orange	Red	:	A21	A21
22	11	Orange	Black	:	A22	A22
23		Gray	Red		A23	A23
24	12	Gray	Black		A24	A24
25		White	Red		A25	A25
26	13	White	Black		A26	A26
27		Yellow	Red		A27	A27
28	14	Yellow	Black		A28	A28
29		Pink	Red		A29	A29
30	15	Pink	Black		A30	A30
31		Orange	Red	:	B1	B1
32	16	Orange	Black	:	B2	B2
33		Gray	Red		B3	B3
34	17	Gray	Black		B4	B4
35		White	Red		B5	B5
36	18	White	Black		B6	B6
37		Yellow	Red		B7	B7
38	19	Yellow	Black		B8	B8
39		Pink	Red		B9	B9
40	20	Pink	Black		B10	B10
41		Orange	Red	:	B11	B11
42	21	Orange	Black	:	B12	B12
43		Gray	Red		B13	B13
44	22	Gray	Black		B14	B14
45		White	Red		B15	B15
46	23	White	Black		B16	B16
47		Yellow	Red		B17	B17
48	24	Yellow	Black		B18	B18
49		Pink	Red		B19	B19
50	25	Pink	Black		B20	B20
51		Orange	Red	:	B21	B21
52	26	Orange	Black	:	B22	B22
53		Gray	Red		B23	B23
54	27	Gray	Black		B24	B24
55		White	Red		B25	B25
56	28	White	Black		B26	B26
57		Yellow	Red		B27	B27
58	29	Yellow	Black		B28	B28
59		Pink	Red		B29	B29
60	30	Pink	Black		B30	B30
61		Orange	Red	:	B31	B31
62	31	Orange	Black	:	B32	B32
63		Gray	Red		B33	B33
64	32	Gray	Black		B34	B34
65		White	Red		B35	B35
66	33	White	Black		B36	B36
67		Yellow	Red		B37	B37
68	34	Yellow	Black		B38	B38

Standard wiring table (68 pin)

Wire No.	Twist No.	Wire Color	Mark Color	Marking	CN1 Pin No.	CN2 Pin No.
1		Orange	Red		A1	A1
2	1	Orange	Black		A2	A2
3		Gray	Red		A3	A3
4	2	Gray	Black		A4	A4
5		White	Red		A5	A5
6	3	White	Black		A6	A6
7		Yellow	Red		A7	A7
8	4	Yellow	Black		A8	A8
9		Pink	Red		A9	A9
10	5	Pink	Black		A10	A10
11		Orange	Red	:	A11	A11
12	6	Orange	Black	:	A12	A12
13		Gray	Red		A13	A13
14	7	Gray	Black		A14	A14
15		White	Red		A15	A15
16	8	White				

8840/8855 Standard Wiring Table

Standard wiring table (20pin)

Wire No.	Twist No.	Wire Color	Mark Color	Marking	CN1 Pin No.	CN2 Pin No.
1	1	Orange	Red	.	A1	A1
2	1	Orange	Black	.	B1	B1
3	2	Gray	Red	.	A2	A2
4	2	Gray	Black	.	B2	B2
5	3	White	Red	.	A3	A3
6	3	White	Black	.	B3	B3
7	4	Yellow	Red	.	A4	A4
8	4	Yellow	Black	.	B4	B4
9	5	Pink	Red	.	A5	A5
10	5	Pink	Black	.	B5	B5
11	6	Orange	Red	:	A6	A6
12	6	Orange	Black	:	B6	B6
13	7	Gray	Red	.	A7	A7
14	7	Gray	Black	.	B7	B7
15	8	White	Red	.	A8	A8
16	8	White	Black	.	B8	B8
17	9	Yellow	Red	.	A9	A9
18	9	Yellow	Black	.	B9	B9
19	10	Pink	Red	.	A10	A10
20	10	Pink	Black	.	B10	B10

Semi-Standard wiring table (28 pin)

Wire No.	Twist No.	Wire Color	Mark Color	Marking	CN1 Pin No.	CN2 Pin No.
1	1	Orange	Red	.	A1	A1
2	1	Orange	Black	.	B1	B1
3	2	Gray	Red	.	A2	A2
4	2	Gray	Black	.	B2	B2
5	3	White	Red	.	A3	A3
6	3	White	Black	.	B3	B3
7	4	Yellow	Red	.	A4	A4
8	4	Yellow	Black	.	B4	B4
9	5	Pink	Red	.	A5	A5
10	5	Pink	Black	.	B5	B5
11	6	Orange	Red	:	A6	A6
12	6	Orange	Black	:	B6	B6
13	7	Gray	Red	.	A7	A7
14	7	Gray	Black	.	B7	B7
15	8	White	Red	.	A8	A8
16	8	White	Black	.	B8	B8
17	9	Yellow	Red	.	A9	A9
18	9	Yellow	Black	.	B9	B9
19	10	Pink	Red	.	A10	A10
20	10	Pink	Black	.	B10	B10
21	11	Orange	Red	:	A11	A11
22	11	Orange	Black	:	B11	B11
23	12	Gray	Red	.	A12	A12
24	12	Gray	Black	.	B12	B12
25	13	White	Red	.	A13	A13
26	13	White	Black	.	B13	B13
27	14	Yellow	Red	.	A14	A14
28	14	Yellow	Black	.	B14	B14

Semi-Standard wiring table (34 pin)

Wire No.	Twist No.	Wire Color	Mark Color	Marking	CN1 Pin No.	CN2 Pin No.
1	1	Orange	Red	.	A1	A1
2	1	Orange	Black	.	B1	B1
3	2	Gray	Red	.	A2	A2
4	2	Gray	Black	.	B2	B2
5	3	White	Red	.	A3	A3
6	3	White	Black	.	B3	B3
7	4	Yellow	Red	.	A4	A4
8	4	Yellow	Black	.	B4	B4
9	5	Pink	Red	.	A5	A5
10	5	Pink	Black	.	B5	B5
11	6	Orange	Red	:	A6	A6
12	6	Orange	Black	:	B6	B6
13	7	Gray	Red	.	A7	A7
14	7	Gray	Black	.	B7	B7
15	8	White	Red	.	A8	A8
16	8	White	Black	.	B8	B8
17	9	Yellow	Red	.	A9	A9
18	9	Yellow	Black	.	B9	B9
19	10	Pink	Red	.	A10	A10
20	10	Pink	Black	.	B10	B10
21	11	Orange	Red	:	A11	A11
22	11	Orange	Black	:	B11	B11
23	12	Gray	Red	.	A12	A12
24	12	Gray	Black	.	B12	B12
25	13	White	Red	.	A13	A13
26	13	White	Black	.	B13	B13
27	14	Yellow	Red	.	A14	A14
28	14	Yellow	Black	.	B14	B14
29	15	Pink	Red	.	A15	A15
30	15	Pink	Black	.	B15	B15
31	16	Orange	Red	:	A16	A16
32	16	Orange	Black	:	B16	B16
33	17	Gray	Red	.	A17	A17
34	17	Gray	Black	.	B17	B17
35	18	White	Red	.	A18	A18
36	18	White	Black	.	B18	B18

Semi-Standard wiring table (80 pin)

Wire No.	Twist No.	Wire Color	Mark Color	Marking	CN1 Pin No.	CN2 Pin No.	Wire No.	Twist No.	Wire Color	Mark Color	Marking	CN1 Pin No.	CN2 Pin No.
1	1	Orange	Red	.	A1	A1	41	21	Orange	Red	.	A21	A21
2	1	Orange	Black	.	B1	B1	42	21	Orange	Black	.	B21	B21
3	2	Gray	Red	.	A2	A2	43	22	Gray	Red	.	A22	A22
4	2	Gray	Black	.	B2	B2	44	22	Gray	Black	.	B22	B22
5	3	White	Red	.	A3	A3	45	23	White	Red	.	A23	A23
6	3	White	Black	.	B3	B3	46	23	White	Black	.	B23	B23
7	4	Yellow	Red	.	A4	A4	47	24	Yellow	Red	.	A24	A24
8	4	Yellow	Black	.	B4	B4	48	24	Yellow	Black	.	B24	B24
9	5	Pink	Red	.	A5	A5	49	25	Pink	Red	.	A25	A25
10	5	Pink	Black	.	B5	B5	50	25	Pink	Black	.	B25	B25
11	6	Orange	Red	:	A6	A6	51	26	Orange	Red	:	A26	A26
12	6	Orange	Black	:	B6	B6	52	26	Orange	Black	:	B26	B26
13	7	Gray	Red	.	A7	A7	53	27	Gray	Red	.	A27	A27
14	7	Gray	Black	.	B7	B7	54	27	Gray	Black	.	B27	B27
15	8	White	Red	.	A8	A8	55	28	White	Red	.	A28	A28
16	8	White	Black	.	B8	B8	56	28	White	Black	.	B28	B28
17	9	Yellow	Red	.	A9	A9	57	29	Yellow	Red	.	A29	A29
18	9	Yellow	Black	.	B9	B9	58	29	Yellow	Black	.	B29	B29
19	10	Pink	Red	.	A10	A10	59	30	Pink	Red	.	A30	A30
20	10	Pink	Black	.	B10	B10	60	30	Pink	Black	.	B30	B30
21	11	Orange	Red	:	A11	A11	61	31	Orange	Red	:	A31	A31
22	11	Orange	Black	:	B11	B11	62	31	Orange	Black	:	B31	B31
23	12	Gray	Red	.	A12	A12	63	32	Gray	Red	.	A32	A32
24	12	Gray	Black	.	B12	B12	64	32	Gray	Black	.	B32	B32
25	13	White	Red	.	A13	A13	65	33	White	Red	.	A33	A33
26	13	White	Black	.	B13	B13	66	33	White	Black	.	B33	B33
27	14	Yellow	Red	.	A14	A14	67	34	Yellow	Red	.	A34	A34
28	14	Yellow	Black	.	B14	B14	68	34	Yellow	Black	.	B34	B34
29	15	Pink	Red	.	A15	A15	69	35	Pink	Red	.	A35	A35
30	15	Pink	Black	.	B15	B15	70	35	Pink	Black	.	B35	B35
31	16	Orange	Red	:	A16	A16	71	36	Orange	Red	:	A36	A36
32	16	Orange	Black	:	B16	B16	72	36	Orange	Black	:	B36	B36
33	17	Gray	Red	.	A17	A17	73	37	Gray	Red	.	A37	A37
34	17	Gray	Black	.	B17	B17	74	37	Gray	Black	.	B37	B37
35	18	White	Red	.	A18	A18	75	38	White	Red	.	A38	A38
36	18	White	Black	.	B18	B18	76	38	White	Black	.	B38	B38
37	19	Yellow	Red	.	A19	A19	77	39	Yellow	Red	.	A39	A39
38	19	Yellow	Black	.	B19	B19	78	39	Yellow	Black	.	B39	B39
39	20	Pink	Red	.	A20	A20	79	40	Pink	Red	.	A40	A40
40	20	Pink	Black	.	B20	B20	80	40	Pink	Black	.	B40	B40

Semi-Standard wiring table (60 pin)

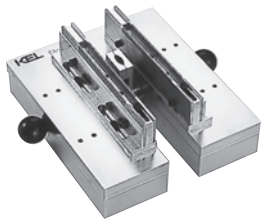
Wire No.	Twist No.	Wire Color	Mark Color	Marking	CN1 Pin No.	CN2 Pin No.
1	1	Orange	Red	.	A1	A1
2	1	Orange	Black	.	B1	B1
3	2	Gray	Red	.	A2	A2
4	2	Gray	Black	.	B2	B2
5	3	White	Red	.	A3	A3
6	3	White	Black	.	B3	B3
7	4	Yellow	Red	.	A4	A4
8	4	Yellow	Black	.	B4	B4
9	5	Pink	Red	.	A5	A5
10	5	Pink	Black	.	B5	B5
11	6	Orange	Red	:	A6	A6
12	6	Orange	Black	:	B6	B6
13	7	Gray	Red	.	A7	A7
14	7	Gray	Black	.	B7	B7
15	8	White	Red	.	A8	A8
16	8	White	Black	.	B8	B8
17	9	Yellow	Red	.	A9	A9
18	9	Yellow	Black	.	B9	B9
19	10	Pink	Red	.	A10	A10
20	10	Pink	Black	.	B10	B10
21	11	Orange	Red	:	A11	A11
22	11	Orange	Black	:	B11	B11
23	12	Gray	Red	.	A12	A12
24	12	Gray	Black	.	B12	B12
25	13	White	Red	.	A13	A13
26	13	White	Black	.	B13	B13
27	14	Yellow	Red	.	A14	A14
28	14	Yellow	Black	.	B14	B14
29	15	Pink	Red	.	A15	A15
30	15	Pink	Black	.	B15	B15
31	16	Orange	Red	:	A16	A16
32	16	Orange	Black	:	B16	B16
33	17	Gray	Red	.	A17	A17
34	17	Gray	Black	.	B17	B17
35	18	White	Red	.	A18	A18
36	18	White	Black	.	B18	B18
37	19	Yellow	Red	.	A19	A19
38	19	Yellow	Black	.	B19	B19
39	20	Pink	Red	.	A20	A20
40	20	Pink	Black	.	B20	B20
41	21	Orange	Red	:	A21	A21
42	21	Orange	Black	:	B21	B21
43	22	Gray	Red	.	A22	A22
44	22	Gray	Black	.	B22	B22
45	23	White	Red	.	A23	A23
46	23	White	Black	.	B23	B23
47	24	Yellow	Red	.	A24	A24
48	24	Yellow	Black	.	B24	B24
49	25	Pink	Red	.	A25	A25
50	25	Pink	Black	.	B25	B25
51	26	Orange	Red	:	A26	A26
52	26	Orange	Black	:	B26	B26
53	27	Gray	Red	.	A27	A27
54	27	Gray	Black	.	B27	B27
55	28	White	Red	.	A28	A28
56	28	White	Black	.	B28	B28
57	29	Yellow	Red	.	A29	A29
58	29	Yellow	Black	.	B29	B29
59	30	Pink	Red	.	A30	A30
60	30	Pink	Black	.	B30	B30
61	31	Orange	Red	:	A31	A31
62	31	Orange	Black	:	B31	B31
63	32	Gray	Red	.	A32	A32
64	32	Gray	Black	.	B32	B32
65	33	White	Red	.	A33	A33
66	33	White	Black	.	B33	B33
67	34	Yellow	Red	.	A34	A34
68	34	Yellow	Black	.	B34	B34

Semi-Standard wiring table (68 pin)

Wire No.	Twist No.	Wire Color	Mark Color	Marking	CN1 Pin No.	CN2 Pin No.
1	1	Orange	Red	.	A1	A1
2	1	Orange	Black	.	B1	B1
3	2	Gray	Red	.	A2	A2
4	2	Gray	Black	.	B2	B2
5	3	White	Red	.	A3	A3
6	3	White	Black	.	B3	B3
7	4	Yellow	Red	.	A4	A4
8	4	Yellow	Black	.	B4	B4
9	5	Pink	Red	.	A5</	

CABLE ASSEMBLY TOOLS

CA-10-1 Cable assembly base for discrete wire



Base for use with pusher and combs

CA-10-2 Pusher



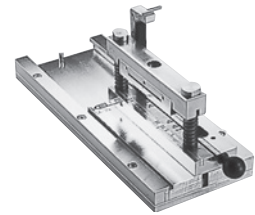
For pressing discrete wires in CA-10-3 and CA-10-4 comb.

CA-10-4(for ϕ 0.62) Comb



Aligns discrete wires in cover of the connector

CA-30 Cable assembly base for laminated wire



Press laminated cable into the cover of the connector.

LF-30-1 Locating Fixture



Terminates 8840/55 to laminated or discrete wire.

LF-30-2 Guide



Positions 8840 for termination

LF-30-3 Guide



Positions 8855 for termination

LF-30-4 Seating platen



Applies pressure for termination of 8840/55

◆ Assembly tool combination

Series	Jig	Hand press	Cable assembly base	Pusher	Comb	Locating fixture	Guide	Seating platen	Option
8840 Series (Receptacle)	Discrete wire cable	HP-12	CA-10-1	CA-10-2	CA-10-3 CA-10-4*	LF-30-1	LF-30-2	LF-30-4	ST-10 Sliding base
	Laminated cable		Cable assembly base for laminated wire CA-30						
8855 Series (Cable plug)	Discrete wire cable		CA-10-A	CA-10-2	CA-10-3 CA-10-4*		LF-30-3		
	Laminated cable		Cable assembly base for laminated wire CA-30						

(Notice)When you want to use discrete wire, you need the additional cable cutter (CT-14)

*CA-10-3:For #28 AWG, CA-10-4:For #30 AWG

OPTIONAL TOOLING

HP-12 Hand press



ST 10 Sliding base



Sliding base increases output for all types of 8840/55 assemblies, and can be used with all assembly tooling in HP-12 press.

CT-14 Cutting jig

