

C.C.P. CONTACT PROBES Co., Ltd.

Connector & Testing Solution Provider

High-Current Connectors

*Electric Vehicles
Warehouse Robots
Electric Rideables*

Electric Connectors

*Wearables
Laptops
Waterproof Devices
360° Rotational Devices*

Testing Solutions

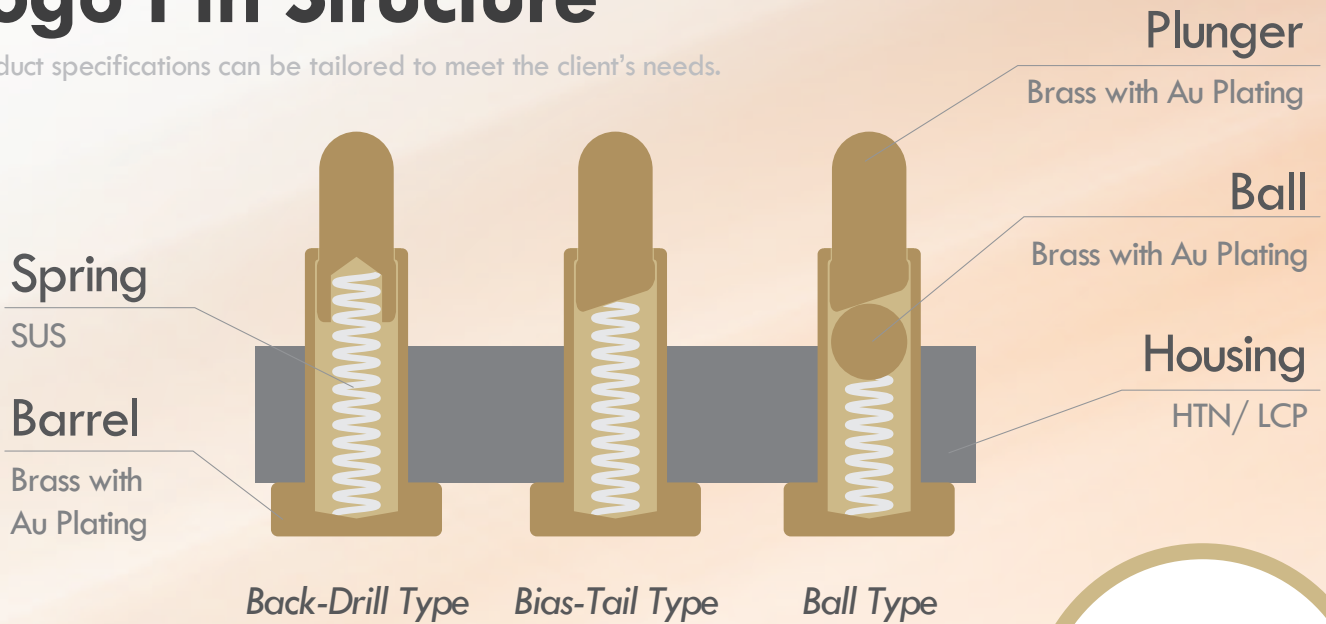
*Battery Testing
Semiconductor Testing
ICT Testing*



Connector Structure

Pogo Pin Structure

*Product specifications can be tailored to meet the client's needs.



	Back-Drill Type	Bias-Tail Type	Ball Type
Pin Length	>1.6 mm	>2.4 mm	>4.0 mm
Current	1 Amp	2 Amps	3~5 Amps



Crown Spring Terminal Structure

*Product specifications can be tailored to meet the client's needs.

Current

2~250 Amps

Life Cycle

Up to 20'000 Times

Male Plug

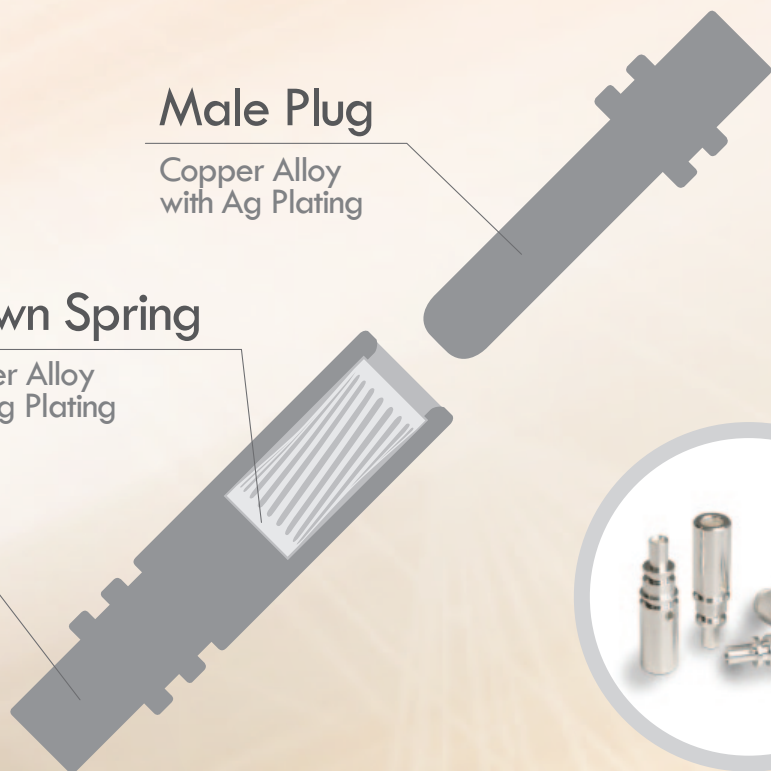
Copper Alloy with Ag Plating

Crown Spring

Copper Alloy with Ag Plating

Female Plug

Copper Alloy with Ag Plating



Wearable Device Applications

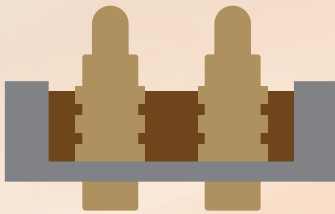
Waterproof Connectors

Waterproof Level

IPx8 is possible depending on the client's specification.

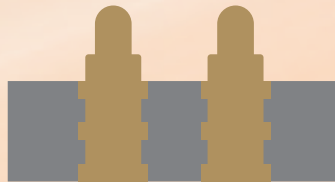
Sealing

Pitch: Small



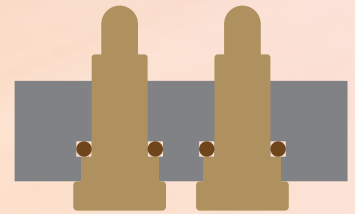
Insert-Molding

Pitch: Small



O-Ring

Pitch: Medium



Anti-Corrosion Plating

Our Anti-Corrosion Plating

*Compared with 30um Au Plating

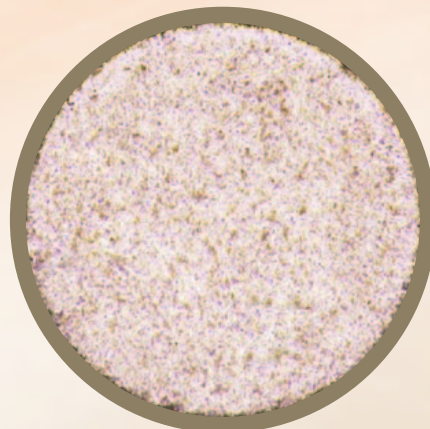
Up to 2x More Resistant to Salt Spray

Up to 5x More Resistant to Artificial Perspiration

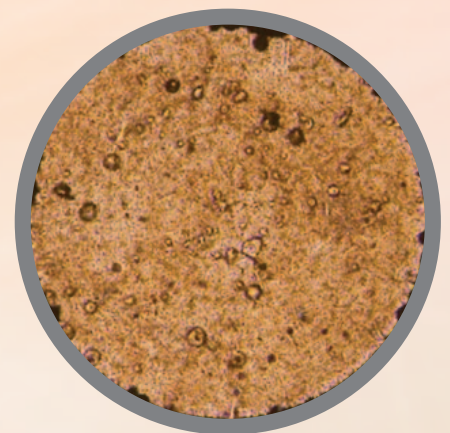
Up to 30x More Resistant to Electrolysis

Stable Electric Resistance

Nickel-Free



Our special plating layer is resistant to corrosion.



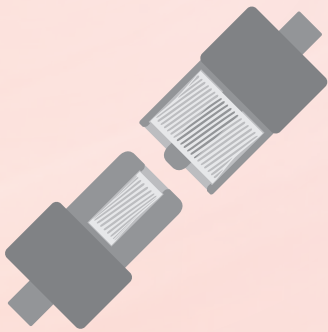
Electrolytic corrosion occurring on regular plating.

Electric Rideable Applications

High-Current Charging Connector

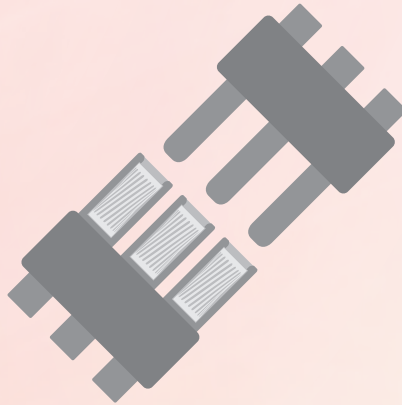
Coaxial Type

Non-Directional Matting
Multi-Channel



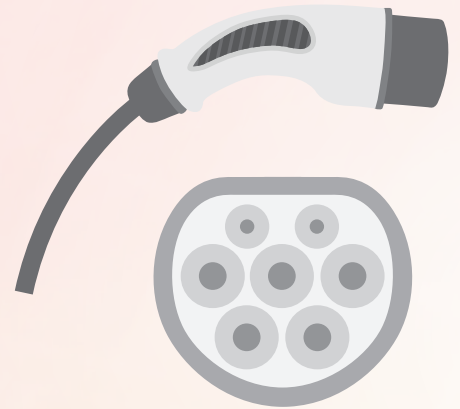
Multiple Terminals Type

Multi-Channel



Standard EV

EU IEC/ US SAE/ China GB



Battery Testing Probe

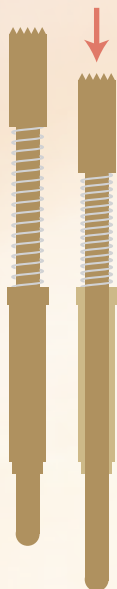
Pogo Probe

Easy to Replace



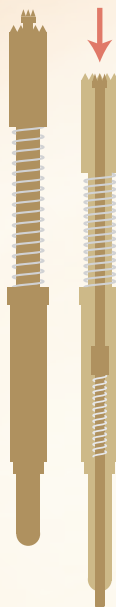
One-Piece Probe

Low Resistance



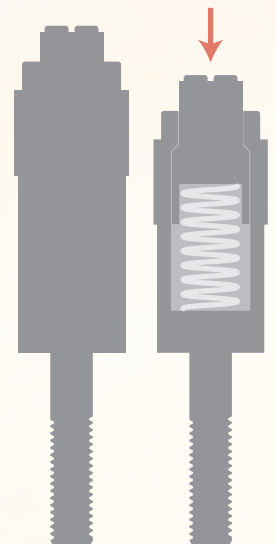
Coaxial One-Piece Probe

4-Wire Measurement



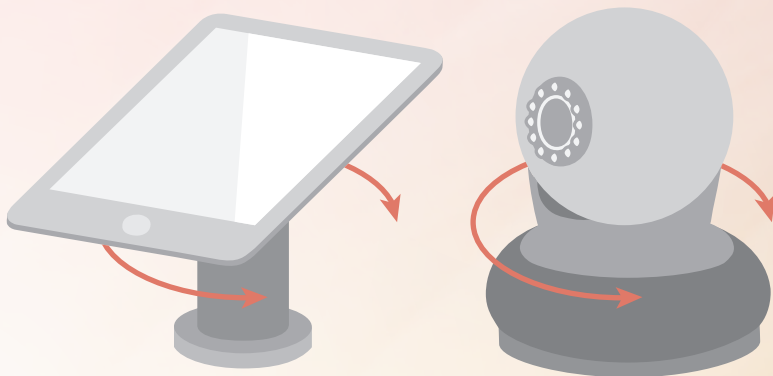
Harness Pogo Probe

High-Current

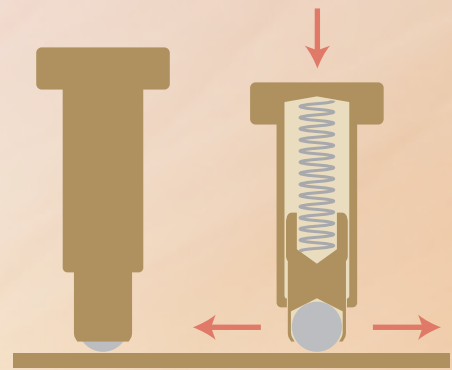


Portable Speaker Applications

360° Rotational Connector



Resistance: 50 mOhm
Current: 3 Amps
Compression: 10'000 times



After matting, the probe can move laterally.

Docking for Portable Devices





B.C.E. s.r.l.
Via Regina Pacis, 54/c - 41049 SASSUOLO (MO) Italy
Tel. +39 0536 811.616 r.a. - Fax +39 0536 811.500
www.bce.it - E-mail: bce@bce.it

