



ALL BEST

High Speed Connectors and
Cable Assemblies

www.all-best.com.tw



CFP4 Series

■ **Product Features:**

- 0.6mm Pitch and 56 Pins
- Support 40Gb/s & 100Gb/s interfaces for Ethernet
- Transmission speed: 4 x 25Gb/s and 4 x 10Gb/s
- 1X1, 1X2 & 1X4 Cage
- Heatsink and Lightpipe Options
- Belly-to-Belly Configuration
- Compliant with CFP MSA

■ **Recommended Applications:**

- Switches
- Routers
- HBA (Host Bus Adapter)
- HPC (High Performance Computing)
- Enterprise Storage
- High-density & High-speed I/O



QSFP28 Series



■ **Product Features:**

- 0.8mm Pitch and 38 Pins
- Lightpipe and Heatsink options
- Offers 4 channels for 28Gb/s to 40Gb/s data rates
- Supports 100Gbps Ethernet and 100Gbps InfiniBand EDR
- Backward compatible with QSFP+ optical modules and cable assemblies
- Identical mating interface as QSFP+ connectors
- Excellent heat dissipation with newly designed thermal heat vent holes and heatsink options
- Compliant with SFF-8665

■ **Recommended Applications:**

- Switches
- Routers
- HBA (Host Bus Adapter)
- HPC (High Performance Computing)
- Enterprise Storage
- High-density & High-speed I/O

SFP28 Series

■ Product Features:

- 0.8mm Pitch and 20 Pins
- Lightpipe options
- Supports 25Gbps Ethernet and 16Gbps Fiber Channel
- Same mating interface and EMI cage dimensions as SFP+
- Two options for EMI containment:
EMI metal gasket and EMI elastic gasket
- Compliant with SFF-8402

■ Recommended Applications:

- Switches
- Routers
- HBA (Host Bus Adapter)
- HPC (High Performance Computing)
- Enterprise Storage
- High-density & High-speed I/O



CXP Series



■ Product Features:

- 0.8mm Pitch
- 84 Pins for single port and 168 Pins for dual port
- High-speed and High-density connector
- Offers 12 channels and achieves QDR of 10Gbps
120Gbps of total bandwidth
- Provides EMI elastic shielding
- One-step placement to PCB
- Compliant with SFF-8642

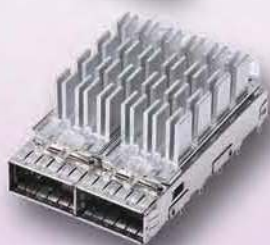
■ Recommended Applications:

- Blade Server
- Data Center
- Networking Switch and Router
- Storage Systems
- HPC (High Performance Computing)

QSFP+ Series

■ Product Features:

- 0.8mm Pitch and 38 Pins
- High speed SMT connector
- Lightpipe options
- Heatsink options for thermal dissipation
- Offers 4 channels for up to 10/20/40Gbps data rates
- Support 40Gbps Ethernet and 40Gbps InfiniBand QDR
- Direct attach copper cable
- Compliant with SFF-8436



QSFP+ Enhance Series

■ Product Features:

- Stacked cages with optimized heat dissipation
- Newly designed thermal vent holes and heatsink options
- Same footprint as QSFP+
- Advanced signal integrity than standard QSFP+
- Offers 4 channels for 40Gbps data rates
- Supports 40Gbps Ethernet and 40Gbps InfiniBand QDR
- Compliant with SFF-8436

■ Recommended Applications:

- Switches
- Routers
- HBA (Host Bus Adapter)
- HPC (High Performance Computing)
- Enterprise Storage
- High-density & High-speed I/O



SFP+ Series



■ Product Features:

- 0.8mm Pitch and 20 Pins
- High-speed SMT connector
- Lightpipe options
- Heatsink options
- Two options for EMI containment:
EMI metal gasket and EMI elastic gasket
- Hot-swappable
- Active and passive copper cable available
- Compliant with SFF-8083

■ Recommended Applications:

- Telecommunication and Data Communication
- 10 Gbps Ethernet Networking Switch and Router
- 8 Gbps Fiber Channel
- OC192/STM-64
- Computer Server



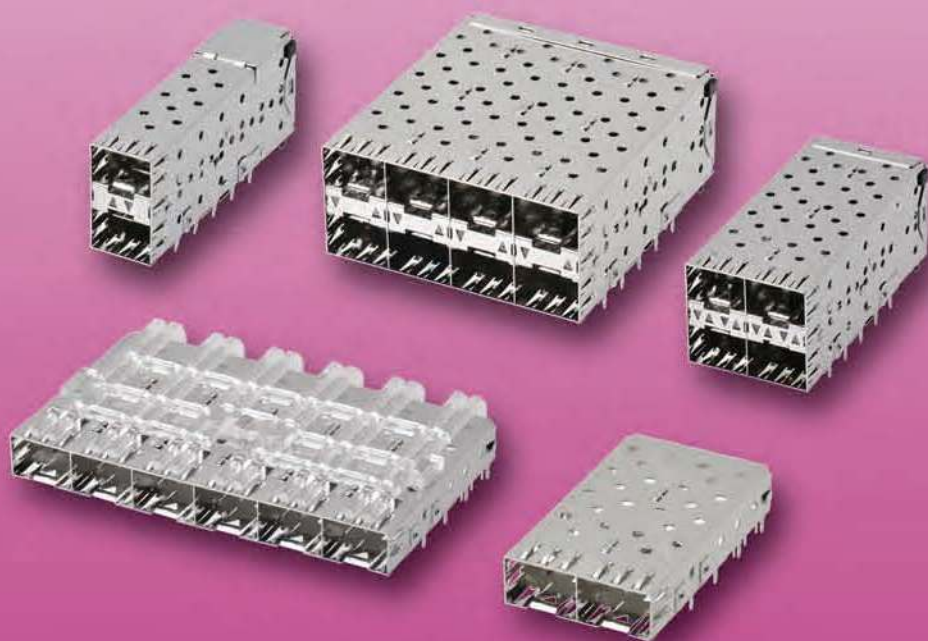
SFP Series

■ **Product Features:**

- 0.8mm Pitch and 20 Pins
- High-speed SMT connector
- Lightpipe options
- Up to 5Gbps data rates
- Hot-swappable
- Compliant with INF-8074i

■ **Recommended Applications:**

- Networking Switch and Router
- Fast/Gigabit Ethernet
- ATM/SONET/SDH
- Computer Server
- Host Equipment
- Storage System
- 4 Gbps Fiber Channel
- InfiniBand (IB)
- FDDI



XFP Series



■ Product Features:

- 0.8mm Pitch and 30 Pins
- High-speed SMT connector
- Hot-swappable
- Compliant with INF-8077

■ Recommended Applications:

- 10Gbps Ethernet
- Telecommunication Networks

InfiniBand Series

■ Product Features:

- 0.75mm Pitch
- 4X & 12X available
- SMT version
- 2.5Gbps (SDR) data rates
- Minimizes crosstalk with ground pins and signal pins separated
- Compliant with SFF-8470

■ Recommended Applications:

- Networking Switch and Router
- Serial Attached SCSI
- 10 Gbps Fiber Channel
- Computer Server
- XAUI Application
- Storage System
- 10 Gbps base-CX4
- 10 Gbps Ethernet
- Serial ATA II



Micro-D Series

■ Product Features:

- 1.27mm Pitch
- 9/15/25 Pins and 18/30 Pins for dual port
- Cable assemblies available
- 1/3 size of a standard D-subminiature connector



■ Recommended Applications:

- Computer Workstation
- Bar Code Scanner
- SSA Device
- VME Card
- Medical Equipment
- Hand Held Device
- Compact PCI
- Data Switch
- Multiplexer
- Vision System

VHDCI & SCSI Series

■ Product Features:

VHDCI

- 0.8mm Pitch
- 36/50/68 Pins and 68 Pins for dual port
- Cable Assemblies are Available
- 320MBps data rates
- 1/3 Size of a Standard SCSI III Connector
- Smallest I/O Wire-to-Board Application



SCSI II & III

- 1.27mm Pitch
- 50/68 Pins for Female and 20/26/28/40/50/68/100 Pins for Male
- Pin Type
- Cable Assemblies are Available
- 75 Degree Outlet Backshell Available
- Patent Authorization from AMP for Female PCB Type Connectors

■ Recommended Applications:

- RAID Controller Card
- Stackable Switch Hub
- PDA & Hand Held PC
- Ultra 2 SCSI Card
- Industrial Computer
- Raid Controller



External PCI-Express Series

■ Product Features:

- 0.8mm Pitch
- 38 Pins for 4X / 68 Pins for 8X / 136 Pins for 16X
- SMT Type
- High Speed Transfer Rate (Gen 1: 2.5 Gbps / Gen 2: 5 Gbps)
- Low Profile Height
- High Temp Thermoplastic
- Die-cast Guide Frame for EMI Prevention

■ Recommended Applications:

- Networking Switch and Router
- HBA (Host Bus Adapter)
- Server Expansion I/O
- Computer Server
- Storage System
- Raid Controller



External Mini SAS Series

■ Product Features:

- 0.8mm Pitch
- 26 Pins
- SMT Type
- High Speed Transfer Rate (Gen 1: 3 Gbps / Gen 2: 6 Gbps)
- Low Profile Height
- High Temp Thermoplastic
- Die-cast Guide Frame for EMI Prevention

■ Recommended Applications:

- Networking Switch and Router
- HBA (Host Bus Adapter)
- Industrial Computer
- Raid Controller
- Storage Rack
- Workstation





ALL BEST ELECTRONICS CO., LTD.



B.C.E. s.r.l.

Via Regina Pacis, 54/c - 41049 SASSUOLO (MO) Italy

Tel. +39 0536 811.616 r.a. - Fax +39 0536 811.500

www.bce.it - E-mail: bce@bce.it

