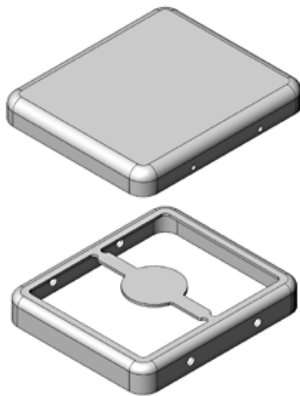


**MS On-Board**[See More](#)

## Introducing: MS206-10

Standard Drawn EMI/RFI Shield  
**Seamless Protective Cage!**

**20.6 x 17.8 x 3 mm**  
**Tin Plated Steel**

Complimentary **CAD files** downloads are available online for immediate implementation.

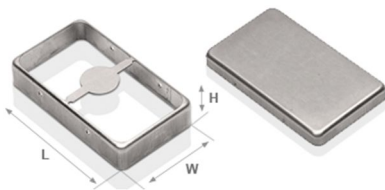
[Download CAD files](#)



**Check out our wide range  
of standard shields**

Pick out your required shield

[Available Now Online!](#)



### MS Drawn EMI/RFI Shields Features & Benefits:

#### Seamless Protective Cage

For higher shielding effectiveness.

#### Solid Construction

To resist dents and warps.

#### Optimal Planarity

For higher yield on reflow soldering.

#### Two-piece Shield Design

enables to repair components without removing the shield,  
saving time and reducing repair damage.

**You may also like:**



**MASACH  
ENGINEERING  
SAMPLE KIT**  
[Product Page](#)



**MASACH  
CATALOGUE**  
[Download](#)

