

# USB Type-C Waterproof IP67 Connectors

Different Designs For Different Needs

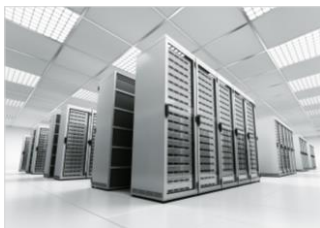


Amphenol LTW offers a comprehensive range of rugged IP67, IP68 and IP69K USB Type-C connectors designed for different product and market applications. Mating and/or stand-alone waterproof, dustproof, high temperature and high vibration resistant, quick mating are all of the many options available for selection

In its various form factors ALTW's USB Type-C **Swift LA**, **LP** and **GG** series deliver high data transmission rate up to 10 Gigabits per second (10 Gbps) and superior power charging up to 5A current.

Available in low profile receptacle, receptacle with FPC, overmolded or overmolding on inter-locking conduit, or any customized requirement is possible and welcome.

## Applications:



Data Center



Portable Device



Industrial Automation



Agriculture & Data Acquisition



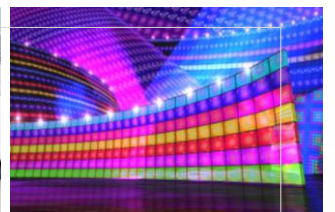
Automotive Diagnostic



Car Entertainment





Marine Electronic



Outdoor LED Display

And many more....

**Ordering Information:**

Series	Swift-LA	Swift-LP	Swift-GG
Part Number	UC-31PFFP-QS8001 (Receptacle) UC-20AMM-QA8AXX (Type C to USB 2.0) UC-30AMM-QA8BXX (Type C to USB 3.0) UC-31AMM-QF8CXX (Type C to Type C)*	UC-31PFFH-QF7001 (Receptacle) UC-31PFFY-QF7001 (Receptacle with FPC)* UC-31PFFY-QF7002 (Receptacle with FPC, Wire-To-Board)*	UC-31PMFY-SC7001 (Receptacle) UC-31AFM-SE7C01 (Type-C to type-C no-IP)
Product Image			
Assembly Type	Snap-in	-	Screw Thread
Waterproof Rating	Receptacle: IP68 (Unmated) Cable: IP67 (Mated)	Receptacle: IP67 (Unmated)	Receptacle: IP67 (Unmated) Cable: IP67 (Mated)
Transfer Speed	Up To 5Gbps**	Support Up To 10Gbps	Support Up To 10Gbps**
Current Rating	Up To 3A	Support Up To 5A	Support Up To 5A**
Key Features	<ul style="list-style-type: none"> <li>- Ideal for industrial application</li> <li>- Quick lock for IP68 waterproof rating</li> <li>- Type C to USB 2.0/USB 3.0 cable available</li> <li>- Type C to Type C</li> </ul>	<ul style="list-style-type: none"> <li>- Ideal for wearable/portable devices where limited if key concern</li> <li>- One stop solution for your receptacle with FPC termination</li> </ul>	<ul style="list-style-type: none"> <li>- Designed for automotive application</li> <li>- Vibration environment approved</li> <li>- Protective conduit for harsh environment</li> </ul>

\* Coming Soon

\*\* Depend On Different Cable Setup

General Specification		Technical Characteristics - Electrical	
Number of Contacts	24P	Contact Resistance	40 mΩ Max.
Current Rating	A4, A9, B4, B9: Total 5A Max. A1, A12, B1, B12: Total 5A Max. A5, B5: Total 1.25A Max. Others: 0.25A	Dielectric Withstanding Voltage	100 Vac (for 1 minute)
Voltage Rating	30V DC/AC	Insulation Resistance	100 MΩ Min.
Lock Mechanism	Quick Lock/Screw Thread	Material Specification	
Flammability	UL 94V-0	Contact	Copper Alloy, Gold Plated
Waterproof Rating	IP67 (unmated)	Housing	LCP, BK
Operating Temperature	-40°C ~ 85°C (Receptacle) -20°C ~ 80°C (Overmolded Cable)	Flammability	UL 94V-0
Insertion Force	5N ~ 20N	Supports USB 2.0, USB 3.1 Gen 1 and USB 3.1 Gen 2 types	
Withdrawal Force	8N ~ 20N (Within 10,000 cycles)		



**B.C.E. s.r.l.**  
Via Regina Pacis, 54/c - 41049 SASSUOLO (MO) Italy  
Tel. +39 0536 811.616 r.a. - Fax +39 0536 811.500  
www.bce.it - E-mail: bce@bce.it



Copyright © 2018 Amphenol LTW Technology Co. Ltd

5F-3, No. 51, Section 4, Zhongyang Road, Tucheng District, New Taipei City 236 Taiwan

Find out more new product here

