








Simula Technology Inc.

Accessory Profile

2018/03/28

- **Type C Accessory I : Video Oriented**
- **Type C Accessory II : USB Hub/Docking without SD**
- **Type C Accessory III : USB Hub/Docking with SD**
- **Type C Accessory IV : No Cable Attached**

Type C Accessory I (Video Oriented)

Category	Description	Part Number	Image	1 to X	PD Controller	A/V Converter	Hub Chipset	Ethernet Controller	Card Reader Controller	Certificae	Remark
Video with PD	USB Type C to HDMI 1.4 dongle	DJ8A7E-3000-10F		1		AXN7402 & PS176				CE/ FCC approved	
	USB Type C to HDMI 2.0 dongle	DJ8A5S-4000-10H		1						CE/ FCC approved	
	USB Type C to DP 1.4 dongle	DJ8A5T-4000-10H		1		AXN7402				CE/ FCC approved	
	USB type C to VGA dongle	DJ8A7F-3000-10F		1		RTL2169U				CE/ FCC approved	
	USB type C to HDMI 1.4 + VGA	DJ8A7M-3000-10F		2	VL100	ITE6562				CE/ FCC approved	
Video w/o PD	USB type C to HDMI 1.4 + type C PD	DJ8A7H-3000-10F		2						CE/ FCC approved	
	USB type C to VGA + type C PD	DJ8A7K-3000-10F		2						CE/ FCC approved	
	USB type C to HDMI 1.4 + VGA + type C PD	DJ8A7N-4000-10F		2	VL100	PTN3355	VL812			CE/ FCC approved	
	USB type C to HDMI 1.4 + type C PD	DJ8A6D-4100-122		2	VL101	PS176				7/12 CE/ FCC	*New Version (6/25)
	USB type C to DP 1.2 + type C PD	DJ8A6C-4100-122		2	VL101					7/12 CE/ FCC	*New Version (6/25)
	USB type C to VGA + type C PD	DJ8A8C-4000-122		2	VL101	PS8617				7/12 CE/ FCC	*New Version (6/25)
others	USB type C to RJ45 dongle	DJ8A7G-3000-10F		1						CE/ FCC approved	
	USB type C to Audio Jack dongle	TBD		1						CE/ FCC approved	TBD

Type C Accessory II (USB Hub/Docking w/o SD)

Category	Description	Part Number	Image	1 to X	PD Controller	A/V Converter	Hub Chipset	Ethernet Controller	Card Reader Controller	Certificae	Remark
USB 3.0 w/o SD/uSD	USB type C to type A 3.0 x 1 + HDMI 1.4 + type C PD	DJ8A7P-4000-10F		3	VL100	PS176	VL812			CE/ FCC approved	
	USB Type C to USB A 3.0 x 1 + VGA + Type C PD			3							
	USB type C to type A 3.0 x 1 + VGA + RJ45 + type C PD	DJ8A7S-4040-10F		4	VL101	PTN3355	VL813	RTL8153		CE/ FCC approved	*
	USB type C to type A 3.0 x 1 + HDMI 1.4 + RJ45 + type C PD	DJ8A7T-4040-10F		4	VL101	PS176	VL813	RTL8153		CE/ FCC approved	*
	USB type C to type A 3.0 x 2 + HDMI 1.4 + type C PD	DJ8A7R-4000-10F		4	PS176	VL813				CE/ FCC approved	
	USB Type C to USB A 3.0 x 2 + HDMI + RJ45 + Type C PD			5							
	USB Type C to USB A 3.0 x 2 + HDMI + RJ45 + Type C PD			5							
	USB type C to type A 3.0 x 2 + HDMI 1.4 + VGA + RJ45 + type C PD	DJ8A7Y-4040-10F		6	VL101	ITE6562	VL813	RTL8153		CE/ FCC approved	
	USB type C to type A 3.0 x 2 + HDMI 1.4 + DP + VGA + RJ45 + Audio + type C PD			8							
	USB Type C to USB A 3.0 x 3 + HDMI + Type C			5							
	USB type C to type A 3.0 x 4	DJ8A7Q-4000-10F		4			VL813			CE/ FCC approved	
	USB type C to type A 3.0 x 4 + type C PD	DJ8A7W-4000-10F		5	VL102		VL817			CE/ FCC approved	
	USB type C to type A 3.0 x 7			7							
	USB type C to type A 3.0 x 2 + type C x 1 + type C PD	DJ8A7B-2000-502		4	GL9510-H2		GL3590-S			6/29 CE / FCC	*New Version (5/22)
	USB type C to type A 3.0 x 3 + type C PD	DJ8A7C-3000-502		4	GL9510-H2		GL3590-S			6/29 CE / FCC	*New Version (5/22)
USB type C to type A 3.0 x 2 + RJ45 + type C PD	DJ8A7D-3000-502		4	GL9510-H2		GL3590-S	RTL8153		6/29 CE / FCC	*New Version (5/22)	

Type C USB Hub/Docking with 1 USB 3.0



Part Number (DJ8A7P-4000-10F)



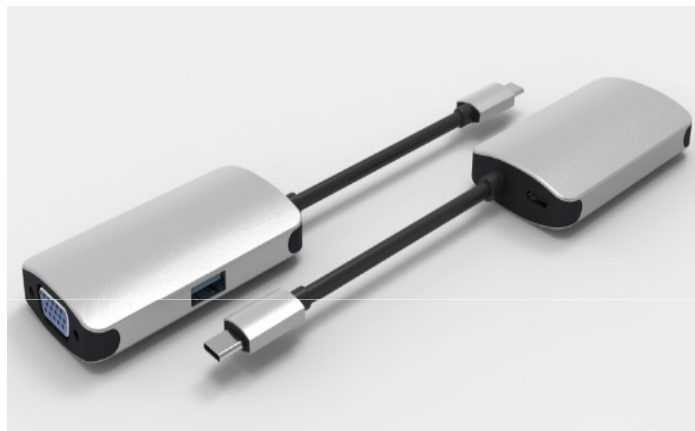
USB Type C to USB3.0*1 + HDMI + Type C PD

Aluminum case
USB Type C input and HDMI Female output
HDMI/F support 4K*2K@30HZ
USB Type C female with PD function charging port for Type C devices
Support USB 3.1/3.0 super speed (5Gbps) transmission, downward compatible USB2.0

Type C USB Hub/Docking with 1 USB 3.0



Part Number



USB Type C to USB3.0 + VGA + Type C PD

Aluminum case
USB Type C input and VGA Female output
VGA/F support 1080P@60HZ
USB Type C female with PD function charging port for Type C devices
Support USB 3.1/3.0 super speed (5Gbps) transmission, downward compatible USB2.0

Type C USB Hub/Docking with 1 USB 3.0



Part Number (DJ8A7S-4040-10F)



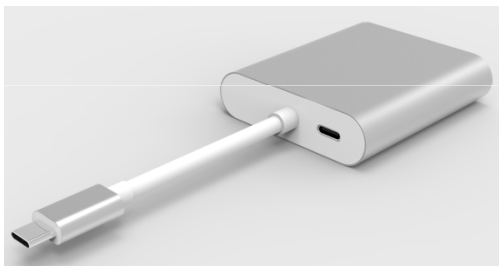
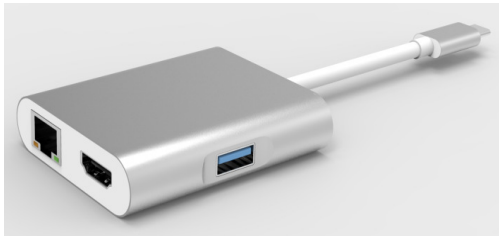
Aluminum case
Support USB-C input and HDMI output
Support USB 3.1/3.0 super speed (5Gbps) transmission,
downward compatible USB2.0
Support VGA 1080p@60Hz and former versions
Supports 10/100 /1000Mbps bandwidth
USB Type C female with PD function charging port for
Type C devices

USB Type C to USB3.0*1 +VGA + RJ45 + Type C PD

Type C USB Hub/Docking with 1 USB 3.0



Part Number (DJ8A7T-4040-10F)



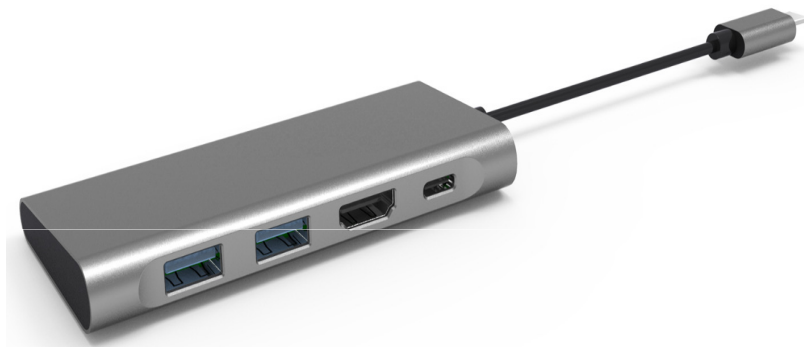
Aluminum case
Support USB-C input and HDMI output
Support USB 3.1/3.0 super speed (5Gbps) transmission,
downward compatible USB2.0
Support DisplayPort 1.2 Alt mode
Support HDMI 4K×2K@30Hz and former versions
Supports 10/100 /1000Mbps bandwidth
USB type-c female charging port for Macbook or Google
new USB Type C female with PD function charging port
for Type C devices

USB Type C to USB3.0*1 + HDMI + RJ45 + Type C PD

Type C USB Hub/Docking with 2 USB 3.0



Part Number (DJ8A7R-4000-10F)



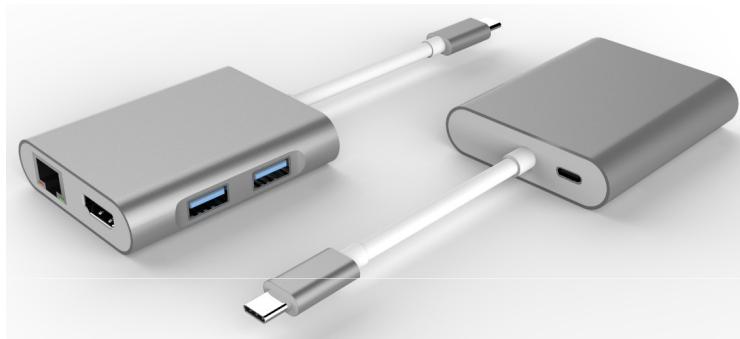
Aluminum housing
Support USB-C input and HDMI output
Support USB 3.1/3.0 super speed (5Gbps) transmission,
downward compatible USB2.0
Support HDMI 4K×2K@30Hz and former versions
USB type-c female charging port for Macbook or Google
new Chromebook Pixel and other USB 3.1 Type C
supported devices charging

USB Type C to USB3.0 *2 + HDMI + Type C PD

Type C USB Hub/Docking with 2 USB 3.0



Part Number



Aluminum case
Support USB-C input and HDMI output
Support USB 3.1/3.0 super speed (5Gbps) transmission,
downward compatible USB2.0
Support HDMI 4K×2K@30Hz and former versions
Supports 10/100 /1000Mbps bandwidth
USB Type C female with PD function charging port for
Type C devices

USB Type C to USB 3.0*2 + HDMI + RJ45 + Type C PD

Type C USB Hub/Docking with 2 USB 3.0



Part Number



Aluminum case
USB Type C input and HDMI Female output
Supports 10/100 /1000Mbps bandwidth
Support USB 3.1/3.0 super speed (5Gbps) transmission,
downward compatible USB2.0
HDMI/F support 4K*2K@30HZ
USB Type C female with PD function charging port for
Type C devices

USB Type C to USB3.0*2 + HDMI + RJ45 + Type C PD

Type C USB Hub/Docking with 2 USB 3.0



Part Number (DJ8A7Y-4040-10F)



USB Type C to USB3.0*2 + HDMI + VGA + RJ45 +
Type C PD

USB 3.1 Type C to 2*USB3.0 + HDMI + VGA+RJ45 + PD
Adapter
Support USB-C input and HDMI, VGA output
Support USB 3.1/3.0 super speed (5Gbps) transmission,
downward compatible USB2.0
Support DisplayPort 1.2 Alt mode
Support HDMI 1080P@60Hz and former versions
Support VGA 1080p@60Hz and former versions
Supports 10/100 /1000Mbps bandwidth
USB type-c female charging port for Macbook or Google
new Chromebook Pixel and other USB 3.1 Type C
supported devices charging

Type C USB Hub/Docking with 2 USB 3.0

Part Number



USB Type C to USB3.0*2 + HDMI + DP + VGA + RJ45
+ USB 3.0 charging + 3.5mm Audio + Type C PD ,
with DC Power adapter

Support USB-C input
Support HDMI Female, DisplayPort Female, VGA Female,
Stereo output
Support HDMI resolution up to 4kx2k@30Hz
Support DisplayPort resolution up to 4kx2k@30Hz
Support VGA resolution up to 1920x1200@60Hz
The total output of the 3 USB-A is 10W(5V@2A), 1 port
supports BC 1.2, with max 7.5W(5V@1.5A), the other two
ports share max 5W (5V@1A)
Support 10/100/1000Mbps bandwidth
Stereo port supports both microphone and headphone
USB-C female charging port for Macbook or Google new
Chromebook Pixel and other USB-C supported devices.
Multiple USB-C interfaces support plug and play, hot
swap

Type C USB Hub/Docking with 3 USB 3.0



Part Number



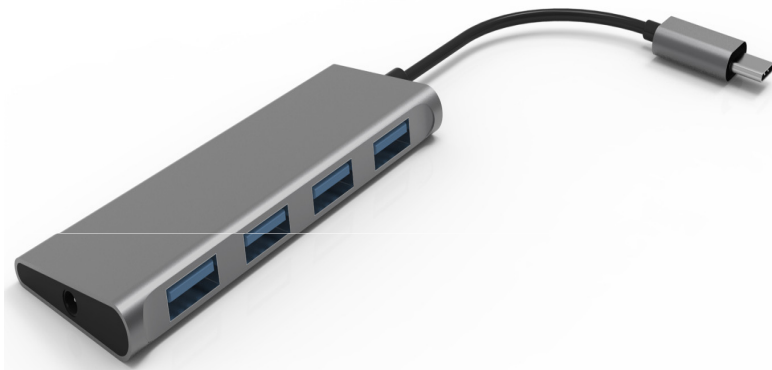
USB Type C to USB3.0*3 + HDMI + Type C

Aluminum case
Color:Shiny silver
USB Type C input and HDMI Female output
HDMI/F support 4K*2K@30HZ
Support USB 3.1/3.0 super speed (5Gbps) transmission,
downward compatible USB2.0

Type C USB Hub/Docking with 4 USB 3.0



Part Number (DJ8A7Q-4000-10F)



Aluminum housing
Support USB 3.1/3.0 super speed (5Gbps) transmission,
downward compatible USB2.0
With power port for option (price is NOT including
power adapter)
Support to connect four USB devices simultaneously
Support plug and play, hot swap

USB Type C to USB3.0*4

Type C USB Hub/Docking with 4 USB 3.0



Part Number (DJ8A7W-4000-10F)



Aluminum case
Support USB 3.1/3.0 super speed
(5Gbps) transmission, downward compatible USB2.0
USB Type C female with PD function charging port for
Type C devices

USB Type C to USB3.0*4 + Type C PD

Type C USB Hub/Docking with 7 USB 3.0










Part Number



Aluminum case
Support USB-C input and USB 3.0 output
Support USB 3.1/3.0 super speed (5Gbps) transmission,
downward compatible USB2.0
Equipped with external charger

USB Type C to USB3.0*7

Type C Accessory III (USB Hub/Docking with SD)

Category	Description	Part Number	Image	1 to X	PD Controller	A/V Converter	Hub Chipset	Ethernet Controller	Card Reader Controller	Certificae	Remark
USB3.0 SD/uSD	USB Type C to USB A 3.0 x 1 + HDMI + SD + RJ45 + Type C PD			5							
	USB Type C to USB A 3.0 x 2 + HDMI + SD + Type C PD			5							
	USB type C to USB A 3.0 x 2 + HDMI 1.4 + RJ45 + SD/uSD card slot + 3.5mm audio Jack + type C PD	DJ8A8A-4040-10F		8	VL101	PS176	VL813	RTL8153	GL3224	CE/ FCC approved	
	USB Type C to USB A 3.0 x 3 + SD + Type C PD			5							
	USB type C to USB A 3.0 x 3 + HDMI 1.4 + RJ45 + SD/uSD card slot + 3.5mm audio jack + type C PD	DJ8A8B-4000-10F		9	VL101	PS176	VL813	RTL8153	GL3224	CE/ FCC approved	
	USB type C to USB A 3.0 x 3 + HDMI + Mini DP + VGA + RJ45 + Audio + SD card slot + Type C			10							
	USB type C to USB A 3.0 x 2 + HDMI 1.4 + RJ45 + SD card slot + type C PD	TBD		7	VL102	PS176	VL817	RTL8153	GL3213L	TBD	*TBD
	USB type C to USB A 3.1 x 2 + HDMI 2.0b + RJ45 + SD card slot + type C PD	TBD		7						TBD	*TBD

Type C USB Hub/Docking with 1 USB 3.0 + SD



Part Number



Aluminum case
Supports 10/100 /1000Mbps bandwidth
USB Type C female with PD function charging port for Type C devices
Support USB 3.1/3.0 super speed (5Gbps) transmission, downward compatible USB2.0

USB Type C to USB3.0 + HDMI + SD + RJ45 + Type C PD

Type C USB Hub/Docking with 2 USB 3.0 + SD



Part Number



Aluminum case
USB Type C input and HDMI Female output
SD and Micro SD card slots
Support USB 3.1/3.0 super speed (5Gbps) transmission,
downward compatible USB2.0
HDMI/F support 4K*2K@30HZ
USB Type C female with PD function charging port for
Type C devices

USB Type C to USB3.0*2 + HDMI + SD + Type C PD

Type C USB Hub/Docking with 2 USB 3.0 + SD



Part Number (DJ8A8A-4040-10F)



Aluminum case
Support USB-C input and HDMI output
Support USB 3.1/3.0 super speed (5Gbps) transmission, downward compatible USB2.0
Support HDMI 4K×2K@30Hz and former versions
SD and Micro SD card slots
Supports 10/100 /1000Mbps bandwidth
USB Type C female with PD function charging port for Type C devices

USB Type C to USB3.0*2 + HDMI + RJ45 + SD +
3.5mm Audio + Type C PD

Type C USB Hub/Docking with 3 USB 3.0 + SD



Part Number



Aluminum case

Support USB 3.1/3.0 super speed (5Gbps) transmission,
downward compatible USB2.0

SD and Micro SD card slots

USB type-c female charging port for Macbook or Google
new Chromebook Pixel and other USB 3.1 Type C
supported devices charging

USB Type C to USB3.0*3 + SD + Type C PD

Type C USB Hub/Docking with 3 USB 3.0 + SD



Part Number (DJ8A8B-4000-10F)



Aluminum case
Support USB-C input and HDMI output
Supports 10/100 /1000Mbps bandwidth
Support USB 3.1/3.0 super speed (5Gbps) transmission, downward compatible USB2.0
SD and Micro SD card slots
HDMI/F support 4K*2K@30HZ
Support HDMI 1.4 and former versions
Support to connect Headsets, earphone, micphone, speaker with audio port
USB type-c female charging port for Macbook or Google new Chromebook Pixel and other USB 3.1 Type C supported devices charging

USB Type C to USB3.0*3 + HDMI + RJ45 + SD + 3.5mm Audio + Type-C PD

Type C USB Hub/Docking with 3 USB 3.0 + SD



Part Number



USB type C to USB 3.0*3+ HDMI + Mini DP + VGA
+ RJ45 + SD + 3.5mm Audio + Type C

Support HDMI resolution up to 4kx2k@30Hz
Support Mini DisplayPort resolution up to 4kx2k@30Hz
Support VGA resolution up to 1920x1200@60Hz
The total output of the 3 USB-A is 10W(5V@2A), 1 port supports BC 1.2, with max 7.5W(5V@1.5A), the other two ports share max 5W (5V@1A)
Support 10/100/1000Mbps bandwidth
Stereo port supports both microphone and headphone
Support to access memory
USB-C female charging port for Macbook or Google new Chromebook Pixel and other USB-C supported devices.
Multiple USB-C interfaces support plug and play, hot swap
Support Secure Digital v3.0 UHS-I (Reading speed max 70Mbps, Writing speed max 90Mbps)
Support Micro SD/SD/SDHC/SDXC (up to 128 GB)

Type C Accessory IV (No Cable Attached)



Category	Description	Part Number	Image	1 to X
USB hub/dock w/o Cable	USB Type C to USB 3.0 x 2+ HDMI + RJ + SD + Type C PD <i>with detachable cable</i>			6
	USB Type C to USB 3.0 x 3+ SD + Type C PD <i>with detachable cable</i>			5
	USB Type C to USB 3.0 x 3+ HDMI + Type C PD <i>with detachable cable</i>			5
	USB Type C to USB 3.0 x 3 + HDMI + RJ + Type C PD <i>with detachable cable</i>			6
	USB Type C to USB 3.0 x 3+ RJ + SD + Type C PD <i>with detachable cable</i>			6
	USB Type C to USB 3.0 x 3 + HDMI + PD Docking + Wireless charging			5

Type C Accessory (No Cable Attached)



Part Number



Aluminum case
USB Type C input and HDMI Female output
Supports 10/100 /1000Mbps bandwidth
Support USB 3.1/3.0 super speed
(5Gbps)transmission,downward compatible USB2.0
SD and Micro SD card slots
HDMI/F support 4K*2K@30HZ
USB Type C female with PD function charging port for Type C devices

USB Type C to USB 3.0*2+HDMI + RJ + SD + Type C PD with detachable cable

Type C Accessory (No Cable Attached)



Part Number



Aluminum case
USB Type C input and HDMI Female output
Support USB 3.1/3.0 super speed
(5Gbps)transmission,downward compatible USB2.0
HDMI/F support 4K*2K@30HZ
USB Type C female with PD function charging port for
Type C devices

USB Type C to USB 3.0*3 + HDMI + Type C PD
with detachable cable

Type C Accessory (No Cable Attached)



Part Number



Type C input and HDMI Female output
Supports 10/100 /1000Mbps bandwidth
Support USB 3.1/3.0 super speed
(5Gbps)transmission,downward compatible USB2.0
HDMI/F support 4K*2K@30HZ
USB Type C female with PD function charging port for
Type C devices

USB Type C to USB 3.0*3 + HDMI + RJ + Type C
PD with detachable cable

Type C Accessory (No Cable Attached)



Part Number



Aluminum case
Support USB 3.1/3.0 super speed
(5Gbps) transmission, downward compatible USB2.0
SD and Micro SD card slots
USB Type C female with PD function charging port for
Type C devices

USB Type C to USB 3.0*3 + SD + Type C PD with
detachable cable

Type C Accessory (No Cable Attached)



Part Number



Aluminum case
Supports 10/100 /1000Mbps bandwidth
Support USB 3.1/3.0 super speed
(5Gbps)transmission,downward compatible USB2.0
SD and Micro SD card slots
USB Type C female with PD function charging port for
Type C devices

USB Type C to USB 3.0*3 + RJ + SD + Type C PD
with detachable cable

Wireless Charging



USB Type C to 3*USB 3.0*3 + HDMI + PD Docking
+ Wireless charging

Aluminum case
USB 3.1 Type C to 3*USB 3.0+HDMI+PD
Docking+Wireless charging
Support HDMI resolution up to 4kx2k@30Hz
The total output of the 3 USB-A is 10W(5V@2A)
USB-C female charging port for Macbook or Google new
Chromebook Pixel and other USB-C supported devices.
Multiple USB-C interfaces support plug and play, hot
swap
Support Secure Digital v3.0 UHS-I (Reading speed max
70Mbps, Writing speed max 90Mbps)
OS support: Windows 10 / 8 / 7, MAC OS X 10.2 (and
above)
According QI standard, Support QI licensed mobile
phone wireless charging
Output 5-9V,2A/1.67A, 10-15W

Thank You



B.C.E. s.r.l.

Via Regina Pacis, 54/c - 41049 SASSUOLO (MO) Italy
Tel. +39 0536 811.616 r.a. - Fax +39 0536 811.500
www.bce.it - E-mail: bce@bce.it

