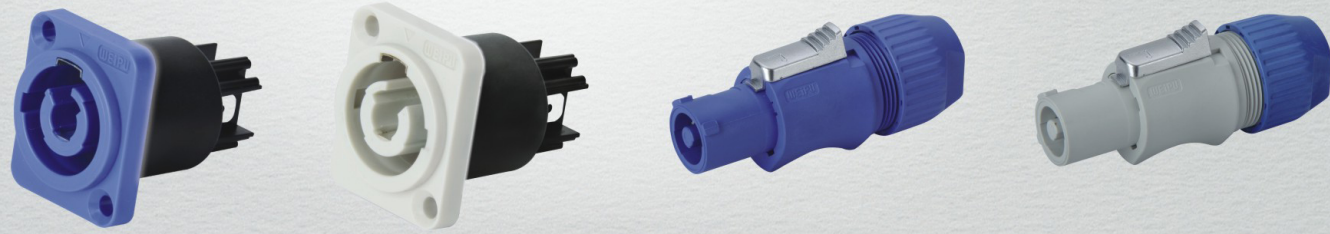






IP65

WAC3



● WAC3 Series IP65

WAC3MPA-1

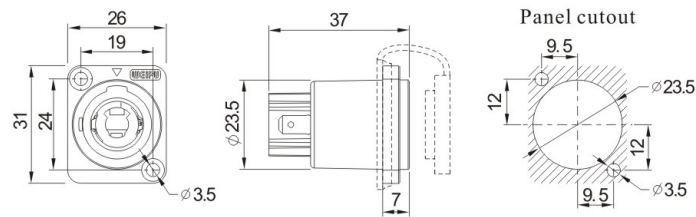
WAC3MPB-1



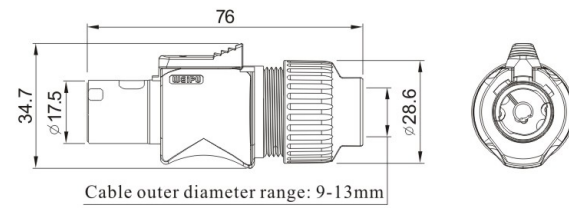
WAC3FCA

WAC3FCB

● Receptacle



● Plug



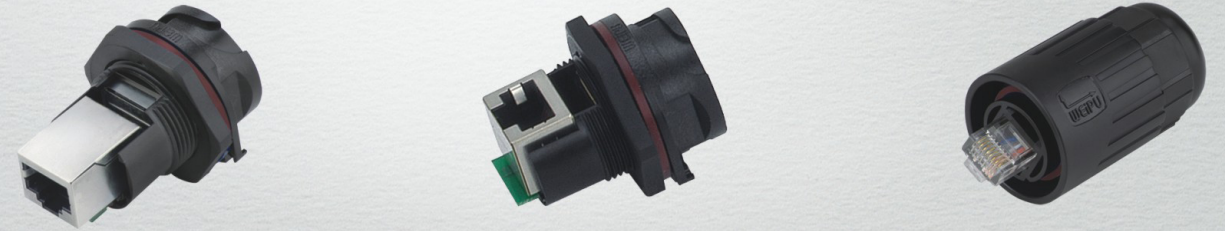
Material and spec

Coupling	Bayonet
Shell	Plug: Nylon PA66 Socket: PC
Insert material	PPS, max temperature 260°C
Contact material	Brass with silver plating
Rated current (A)	20
Rated voltage (AC.V)	250
Test voltage (AC.V) 1 min	2500
Insulation resistance (MΩ)	2000
Mating cycle	1000
Temperature range	-40°C ~ +85°C
IP rating	IP65
Termination	Receptacle: 3/16" flat tab terminals Plug: screw



IP67

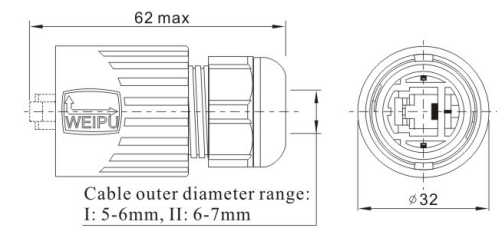
RJ45F



RJ45F plug

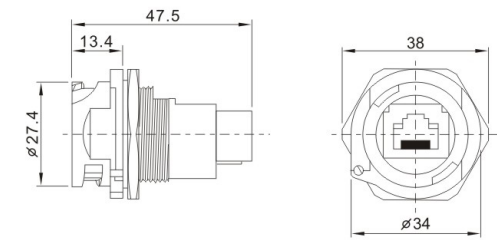
RJ45F6

Cable outer diameter range:
I: 5-6mm, II: 6-7mm



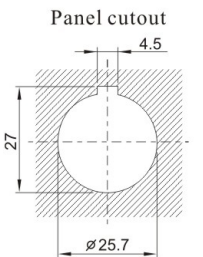
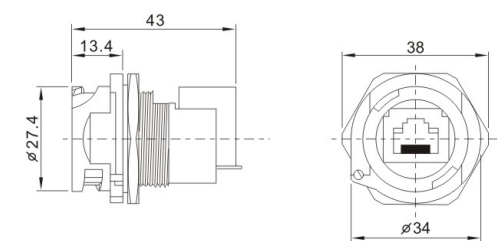
RJ45F Receptacle

RJ45F71



Angled Receptacle

RJ45F71RA



Material and spec

Coupling	Bayonet
Shell material	PC, fire resistance: V-0
IP rating	IP67
Temperature range	-40°C ~ +85°C



B.C.E. S.r.l. - Via Regina Pacis, 54/c - I 41049 Sassuolo (MO), Italy

Tel: (+39) 0536 811616 Fax: (+39) 0536 811500 E-mail: bce@bce.it Web: www.bce.it

