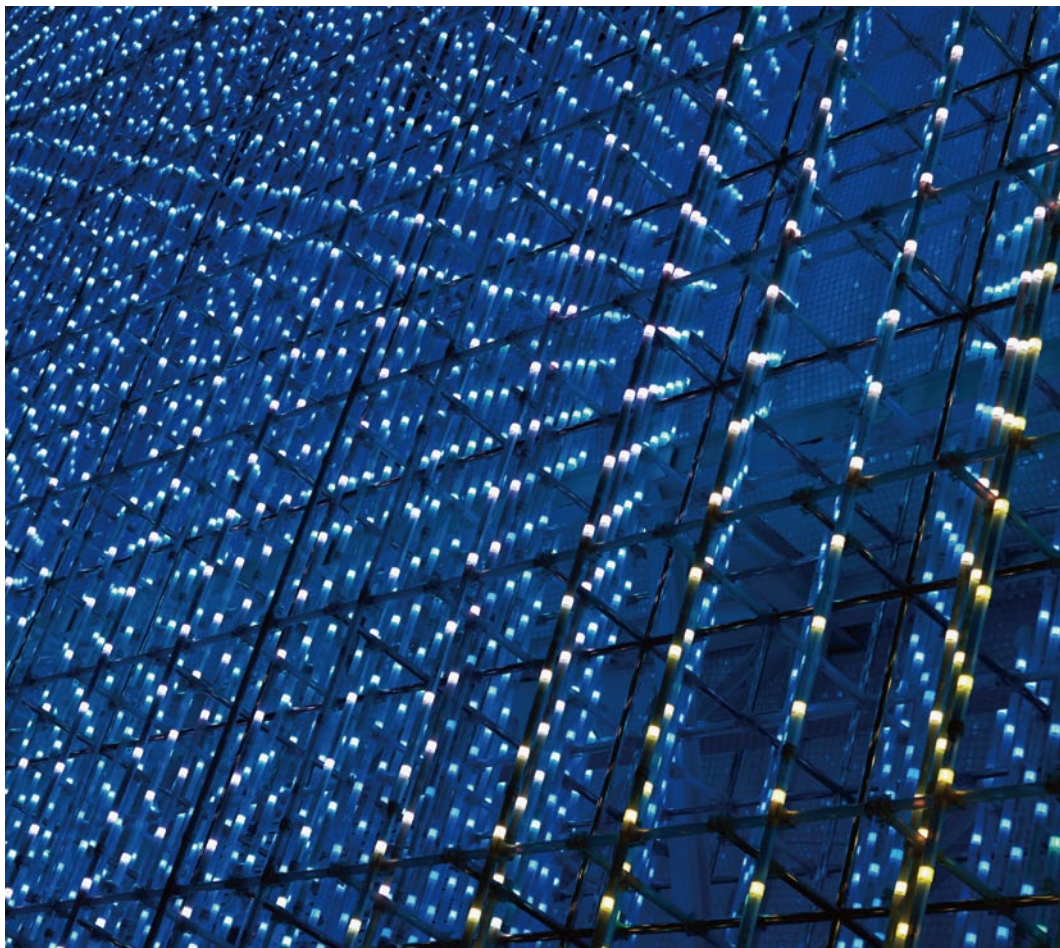




Amphenol LED Market



<http://www.amphenolltw.com>



Amphenol LTW

Our History

LTW Technology, established in 1993, is a professional designer and manufacturer of waterproof connectors. In April of 2010, LTW Technology was acquired by Amphenol Group and officially changed its company name to “Amphenol LTW Technology Co., Ltd.”.

Amphenol LTW successfully develops high-end waterproof connectors to meet strict requirements for various outdoor and industrial applications; we also have many worldwide patents and certification such as ISO 14001. ISO 9001 and NMEA 2000.

Amphenol LTW is not only a supplier of waterproof connectors but also a solution provider in diversified market segments.

Our Mission

Amphenol LTW is fully committed to fulfill every customer's desire in their interconnection needs. The customized ability and wide-ranging products make us unique from competitors. Furthermore, high standard in product quality and outstanding customer service are to be expected.

- Customized capability for all interconnect solution
- Breakthrough innovation
- High standard in product quality
- Worldwide customer base
- Wide-ranging products for your market segment needs

Amphenol LTW strives to be the world's preferred interconnect solution provider.



B.C.E. s.r.l.
Via Regina Pacis, 54/c - 41049 SASSUOLO (MO) Italy
Tel. +39 0536 811.616 r.a. - Fax +39 0536 811.500
www.bce.it - E-mail: bce@bce.it





LED Market

At Amphenol LTW, we understand the unique interconnect needs of the LED market and its vast application. We know that long life, minimal maintenance, extreme energy efficiency and a sensitivity to moisture in both indoor and harsh outdoor environments are paramount to LED applications.

Whether you need signal connectors, power connectors, hybrid connectors, complete cable assemblies, or a highly customized value-added product, Amphenol has the right solution for your LED application.

Amphenol's connectors and cable assemblies are engineered to work in any environment and to adhere to the strictest international requirements. With IP65 to IP68 waterproof ratings, EMI and UV resistance, UL, CE and/ or

TUV approvals - ALTW's wide array of products can be used for all LED applications.

ALTW's Intelligent Pre-Cabling System and Solutions (IPCS) is your answer for incorporating LED Lighting in tunnels, streets, freeways, highways, retail and commercial buildings, buses, trains, ships, aircrafts, or anywhere. No matter the LED retrofit and/or LED Lighting you intend to use, ALTW's IPCS can solve your need for electrical wiring and cabling infrastructure and help you SAVE 20% to 80% off of your installation time and cost. ALTW's IPCS provides peace of mind, quality workmanship and no power drop which is crucial to LED Light Quality.

Eventually, your total cost of ownership is greatly minimized.



B.C.E. s.r.l.
Via Regina Pacis, 54/c - 41049 SASSUOLO (MO) Italy
Tel. +39 0536 811.616 r.a. - Fax +39 0536 811.500
www.bce.it - E-mail: bce@bce.it



LED Applications



- Architecture Lighting
- LED Display
- Entertainment
- Street lighting
- Parking Lighting

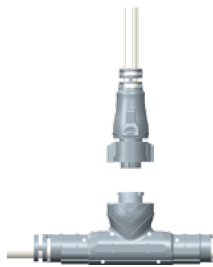


- Lighting Control
- Low Voltage DC Grid
- Environmental Control
- Heating, Ventilation & Air Conditioning
- Fire Detection & Alarm
- Escalator & Elevator
- Access Control
- Security

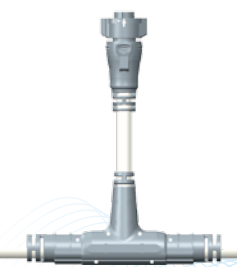
Intelligent Pre-Cabling System Solution

Indoor Solution

Outdoor Solution (IP6X)



Trunk cable overmolded with cable



Trunk cable with receptacle



Trunk cable overmolded with cable



Trunk cable with receptacle

Simple topology but limitless possibilities...

- Various solutions for indoor / outdoor lighting
- Power, data and hybrid applications
- Customized design to save significant installation time and cost
- Suitable for different connectors, cables types, metal/ plastic conduits and pipes, etc.
- Distribute safe, low voltage DC power to lighting fixtures, sensors and other electrical devices
- Offer the ability to repurpose and reconfigure without rewiring
- Plug and play modularity
- To meet the control strategies for different parts of the building
- Flexibility for customization to adapt to any kind of network connecting topologies

▾ RBL Connector



- Snap-in with Latch Type
- Receptacle, Overmolded With Cable & Field Installable available
- UV Resistant
- Various sizes available
- IP67 waterproof mated or unmated
- Options from 2 to 18 contacts, 5A to 20 A
- Operating temperature
 - Field installable: -40°C~105°C
 - Receptacle: -40°C~105°C
 - Over-molded with Cable: -20°C~80°C

▾ X-Lok Connector



- Push Lock Type
- Receptacle, Overmolded With Cable available
- Various sizes available
- Options from 2 to 18 contacts, 5A to 20 A
- UV Resistant
- IP67 waterproof mated or unmated
- Operating temperature
 - Receptacle: -40°C~105°C
 - Over-molded with Cable: -20°C~80°C
- Safety Locking

▾ Circular Connector*



- Screw Threaded Type, Lock Bayonet Type or Push Lock Type
- Receptacle, Receptacle with cable, Overmolded With Cable & Field Installable available
- Options from 2 to 31 contacts, 2A to 20A / Hybrid available
- UV Resistant
- IP 66/67/68 waterproof mated or unmated
- Operating temperature
 - Field installable: -40°C~105°C
 - Receptacle: -40°C~105°C
 - Receptacle with cable: -20°C~80°C
 - Overmolded with cable: -20°C~80°C
- Various sizes, over 1000 items, plastic & metal

▾ Power Connector*



- Screw Threaded or Lock Bayonet Type (2 & 3 points)
- Receptacle, Overmolded With Cable & Field Installable
- Over 110 plastic connector types
- Options from 2 to 7 contacts, 8A to 30A
- UV Resistant / Hybrid available
- Operating temperature
 - Overmolded with Cable: -20°C~80°C
 - Receptacle: -40°C~105°C
 - Field installable: -40°C~105°C
- IP67/68 waterproof mated or unmated
- Customizations are possible
- Safety locking available (25A & 30A)
- Touch Safe (IP2X) available (25A & 30A)

▾ M Series Sensor Connector



- Robust, compact and rugged design available in IP67/IP68/IP69K, waterproof mated or unmated
- Available in M8, Guided M8 (G8), M12 in A, B, D, and I Codes, Mini (7/8"), M23, and Heavy Duty Shielded Connector (HDSC)
- Available in Thru-hole, Solder Contacts, Screw-In, and IDC
- M8 & M12 Passive Distribution Boxes
- M12 S Code for AC up to 12A/630V and T Code for DC up to 12A/60V
- M12 Receptacle (with or without Wires, for Solder and 90° or 180° Thru-hole), Field Installable and Molded with Cable available
- PVC, PUR Jackets available for cables (Sun, Oil Resistant & Flame rated)
- Operating temperatures:
 - Field installable: -40°C~105°C
 - Receptacle: -40°C~105°C
 - Overmolded with Cable
 - PVC Cable: -20°C~80°C
 - PU Cable: -20°C~85°C
- UL/CSA Approved

↘ RJ Connector*



- Screw Threaded or lock Bayonet Type
- Receptacle, Overmolded With Cable & Field Installable available
- Shielded & Unshielded versions
- Fast connectivity Networking in Harsh environments
- UV Resistant
- RJ Jack in 180 & 90 deg., Terminal Block and Cable terminated
- Meets industry standards (ODVA, ProfiNet)
- Operating temperature
 - Overmolded with Cable: -20°C~80°C
 - Receptacle: -40°C~105°C
- IP67/IP68 mated and unmated

↘ Vent



- Various installation available: Screw M12x1.5 (nut available), Snap-in, Screw M12x1.25 with Nut
- Wide range of temperature to endure in different working environments
- Durable protection against water from IP67, IP68 to IP69K
- Longer product life with F1 rating for UV resistance in outdoor applications
- Metal material is coming soon

↘ SSL Series

SSL 1.1*



- For B-to-B, W-to-B, W-to-W
 - Low profile design
 - 2P, 4P and 6P available
 - SMT Receptacle : Right Angle and Straight types
 - Custom cable assemblies length available upon request
 - Single (wire) and dual (flat cable) ended cable assemblies available
 - Current Rating: 3A (Max)
 - W-to-B / B-to-B locks available for various applications
 - High temperature material for reflow processing
 - Tape & reel packing for high speed SMT processes
 - Cost-effective alternative to hand soldering
 - UL 1977 / Lead Free
- ** Waterproof receptacle & Field Installable (SSL 1.2) available soon

SSL 1.3 The Bridge



- Jumper for B-to-B
- Low profile design
- #2.5 screw(not included) used to secure jumper connected to heat sink or base
- Suitable for various LED pitch applications
- Current Rating: 5A (Max)
- UL 1977
- Tube packaged
- Available in 1 P

SSL 2.1 Inverted Thru Hole

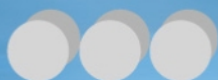


- Card edge connector to connect LED modular board and driver board
 - One piece solution for easy operation
 - Available in 2P
 - Cost-effective alternative to hand soldering
 - High temperature material for reflow processing
 - Tape & reel packing for high speed SMT processes
 - Current Rating: 12A (Max)
 - UL 1977
- ** Mating cable available soon

SSL2.3 EZ-B*



- Simplify the assembly process: Mount to Standard E26/27 directly by screwing
- Accept enclosure thickness up to 3.5mm
- Insert PCB driver to screw base easily; cost-effective alternative to hand soldering
- Current Rating: 3A (E26/27)
- UL recognized material



B.C.E. S.r.l. - Via Regina Pacis, 54/c - I 41049 Sassuolo (MO), Italy

Tel: (+39) 0536 811616 Fax: (+39) 0536 811500 E-mail: bce@bce.it Web: www.bce.it

