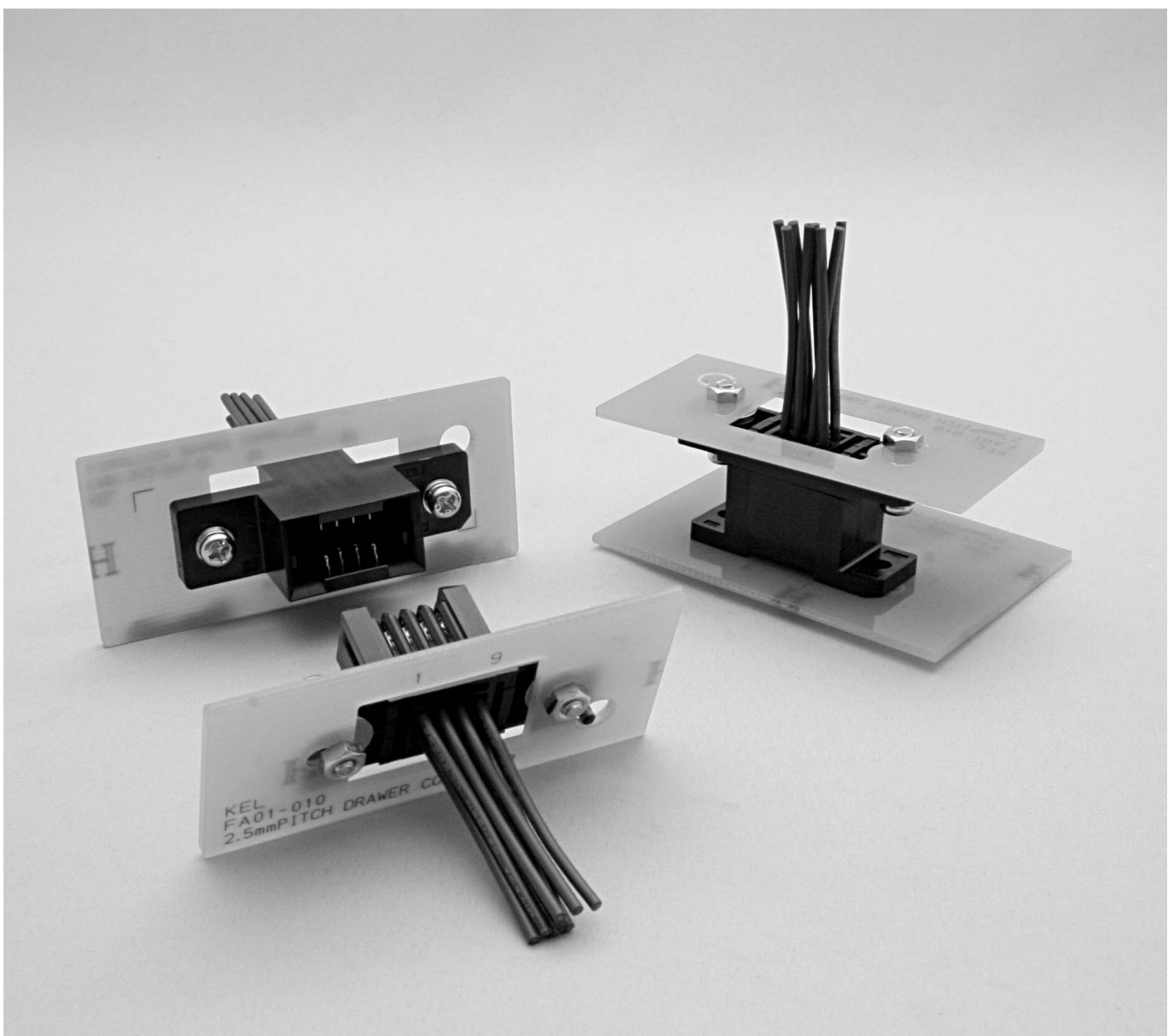
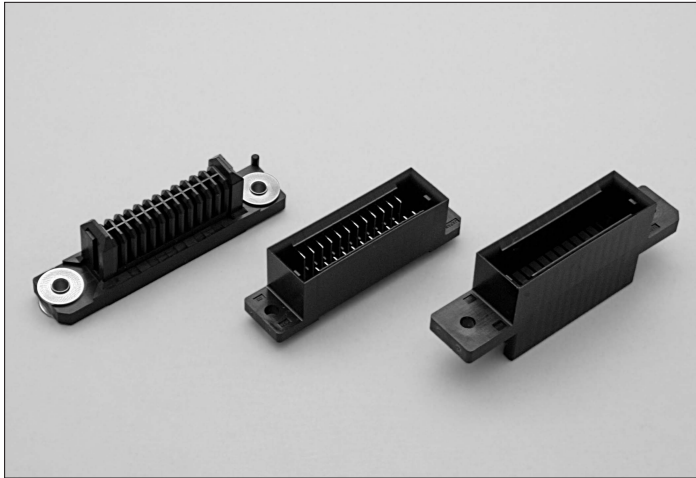


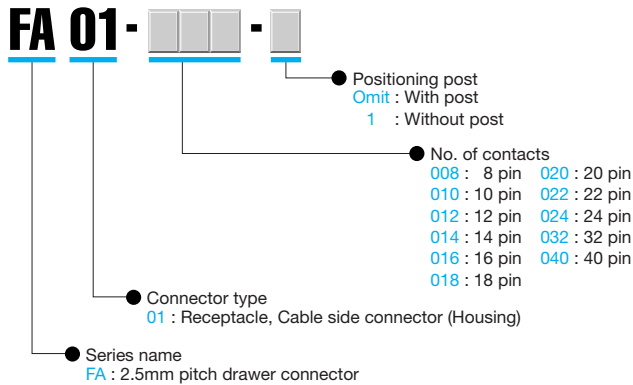
# 2.5mm Pitch Drawer Connector Crimping Termination for Cable Assembly

## FA SERIES

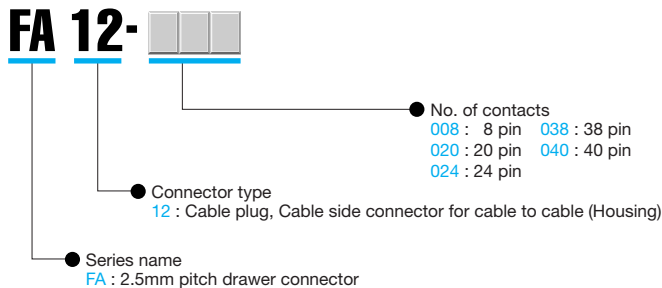
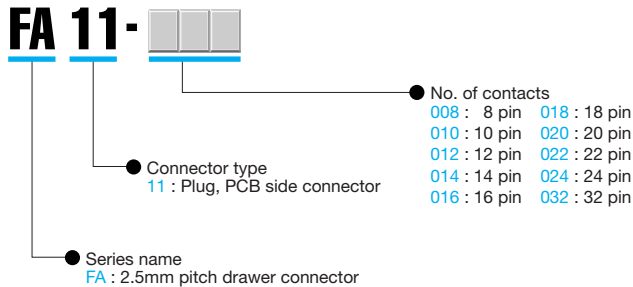




**ORDER CODE**



\*Above order code FA01-□□□□ is for the housing only, contact terminals are sold separately. About #566 order code, please refer next page.



\*Above order code FA12-□□□□ is for the housing only, contact terminals are sold separately. About #570 order code, please refer next page.

**FEATURES**

- 2.5mm pitch drawer connector
- Receptacle (FA01:Cable side connector), Plug (FA11:PCB side connector) and Cable plug (FA12:Cable side connector for cable to cable) are available and can accommodate a wide range of usage
- Absorbs ±3mm gap in X and Y directions when mating
- Floating structure of the screwed area enables ±1.4mm displacement in X and Y directions in mated condition
- Highly reliable design with effective contact displacement of 3mm
- Crimping termination for cable assembly
- #22 AWG, #24 AWG and #26 AWG are applicable
- Dust resistant twin-leaf pinching 2 point contact structure
- Live insertion and withdrawal type available
- A structure to prevent miss insertion
- Rich pin count variations  
Cable side connector (FA01) : 8, 10, 12, 14, 16, 18, 20, 22, 24, 32 and 40 pins  
PCB side connector (FA11) : 8, 10, 12, 14, 16, 18, 20, 22, 24 and 32 pins  
Cable plug for cable to cable (FA12) : 8, 20, 24, 38 and 40 pins
- RoHS compliance

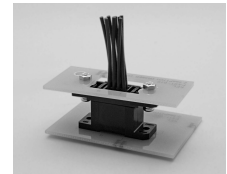
**SPECIFICATIONS**

- Insulator material : Glass-filled PBT (UL94V-0),
- Contact material : Black
- Contact plating : Copper alloy  
: Gold over Nickel  
(Contact /Terminal area)
- Washer / Rivet material : Tin over Nickel (Crimping area)
- Current rating : Stainless steel
- Contact resistance : 3A per contact
- Dielectric withstanding voltage : 30mΩ max.
- Insulation resistance : 650V AC for 1 minute
- Operating temperature : 1000MΩ min. at 500V DC

\*High mating cycle endurance type (5,000 times min.) is also available, please contact your local sales office.

**PRODUCT OUTLINE**

FA Series is 2.5mm pitch drawer connector. Drawer connector can absorb the misalignment of two units and is used in between such as toner cartridge or paper tray and main body of multi

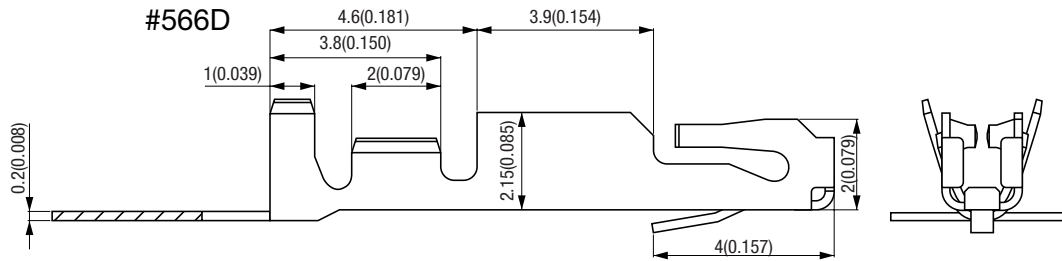


function printer where mating position is not visible or angled mating occurs. The high spec design with such as mating guide, miss insertion prevention, floating and buckling prevention structure enables to solve customer's problems such as bucking of contact pins, mating adjustment, stress when mating and contact failure. The variation of having both board to cable type and cable to cable type offers wide range of usage such as industrial, OA and gaming.

## Contact Terminal

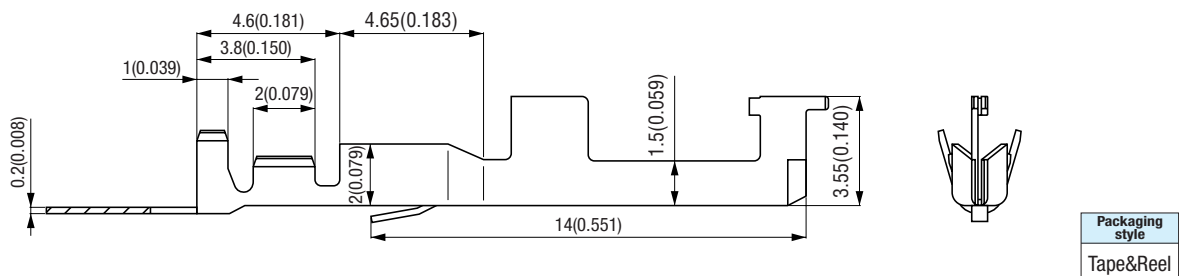
■ Contact terminal for FA01-□□□□-□ receptacle (Cable side connector)

● ORDER CODE : #566



■ Contact terminal for FA12-□□□□ cable plug (Cable side connector for cable to cable)

● ORDER CODE : #570

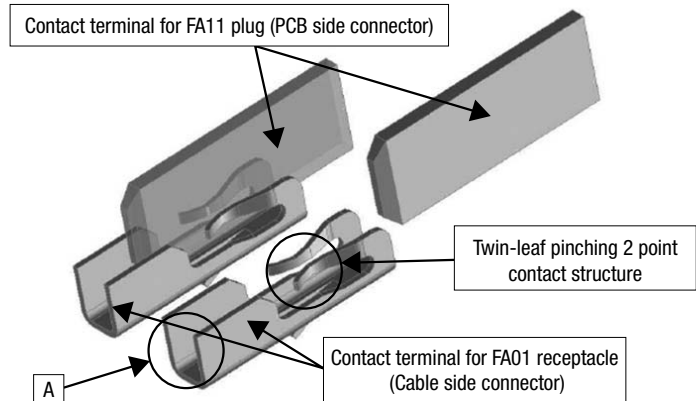


### Product Table

Part Number	Number of packaging
#566 / #566D	10,000
#570	7,500

## Twin-Leaf Pinching 2 Point Contact Structure

■ With the KEL original twin-leaf pinching 2 point contact structure, the flat plate type contact of plug connector is inserted into the contact of receptacle connector (A part of the figure on the right side) for electrical contact. The flat plate shaped contact of plug connector is tolerant of buckling compared to pin header type contact, and the stable contact force of the pinching structure of receptacle connector assures high reliability of electrical contact. The twin-leaf pinching 2 point contact structure is a contact method well acknowledged for our GF series battery connector which has high sales and is highly evaluated in lap top computer market.



## Assembly Tool



### Hand Tool

Part Number	CH-01(FA-AWG22-24)
Mating Cable	#22 AWG, #24 AWG

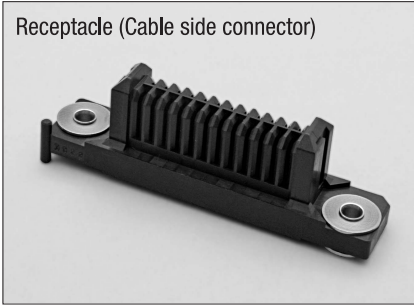
### Crimping Machine

Manufacture	JAPAN AUTOMATIC MACHINE CO., LTD	
Crimping Machine	LPC220S	
Applicator	CFS779100	CFS791600
Mating Contact	#566□	#570

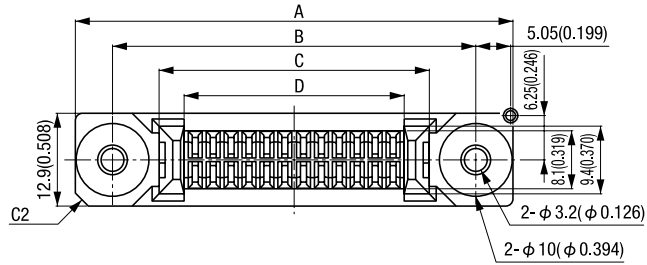
\*The assembly tool is applied to #566 and #566D contact. Please contact your local sales office for the further details of the product or an assembly tool for #570 contact.

**FA01-□□□-□ (Receptacle, Housing)**

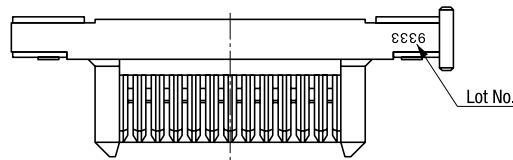
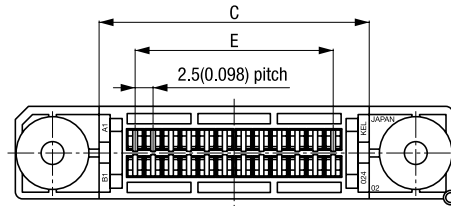
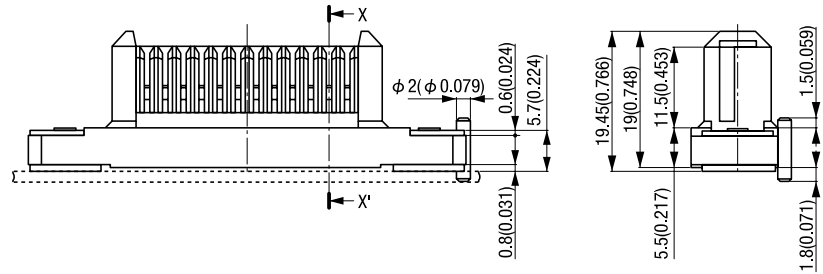
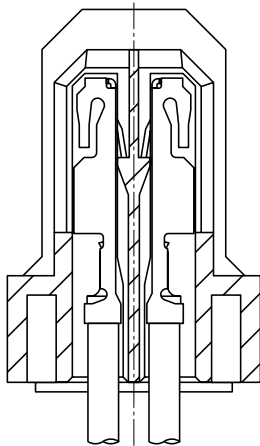
Receptacle (Cable side connector)



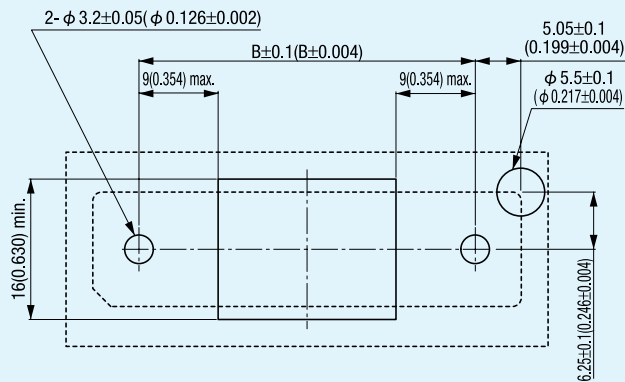
Unit:mm(inch)



X-X' Cross Section (Contact Inserted)



Printed Circuit Board Layout (Component Side View)



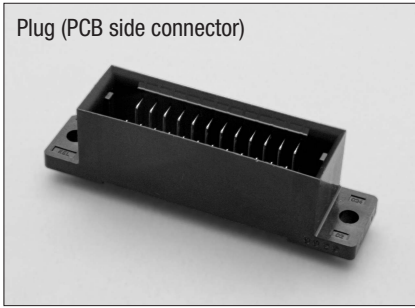
Packaging style
Tray

Product Table / Dimensions

No. of contacts	Part Number	A	B	C	D	E	Number of packaging
8	FA01-008-□	41.0 (1.614)	30.5 (1.201)	17.5 (0.689)	10.7 (0.421)	7.5 (0.295)	96
10	FA01-010-□	43.5 (1.713)	33.0 (1.299)	20.0 (0.787)	13.2 (0.520)	10.0 (0.394)	96
12	FA01-012-□	46.0 (1.811)	35.5 (1.398)	22.5 (0.886)	15.7 (0.618)	12.5 (0.492)	84
14	FA01-014-□	48.5 (1.909)	38.0 (1.496)	25.0 (0.984)	18.2 (0.717)	15.0 (0.591)	84
16	FA01-016-□	51.0 (2.008)	40.5 (1.594)	27.5 (1.083)	20.7 (0.815)	17.5 (0.689)	72
18	FA01-018-□	53.5 (2.106)	43.0 (1.693)	30.0 (1.181)	23.2 (0.913)	20.0 (0.787)	72
20	FA01-020-□	56.0 (2.205)	45.5 (1.791)	32.5 (1.280)	25.7 (1.012)	22.5 (0.886)	72
22	FA01-022-□	58.5 (2.303)	48.0 (1.890)	35.0 (1.378)	28.2 (1.110)	25.0 (0.984)	72
24	FA01-024-□	61.0 (2.402)	50.5 (1.988)	37.5 (1.476)	30.7 (1.209)	27.5 (1.083)	60
32	FA01-032-□	71.0 (2.795)	60.5 (2.382)	47.5 (1.870)	40.7 (1.602)	37.5 (1.476)	60
40	FA01-040-□	81.0 (3.189)	70.5 (2.776)	57.5 (2.264)	50.7 (1.996)	47.5 (1.870)	48

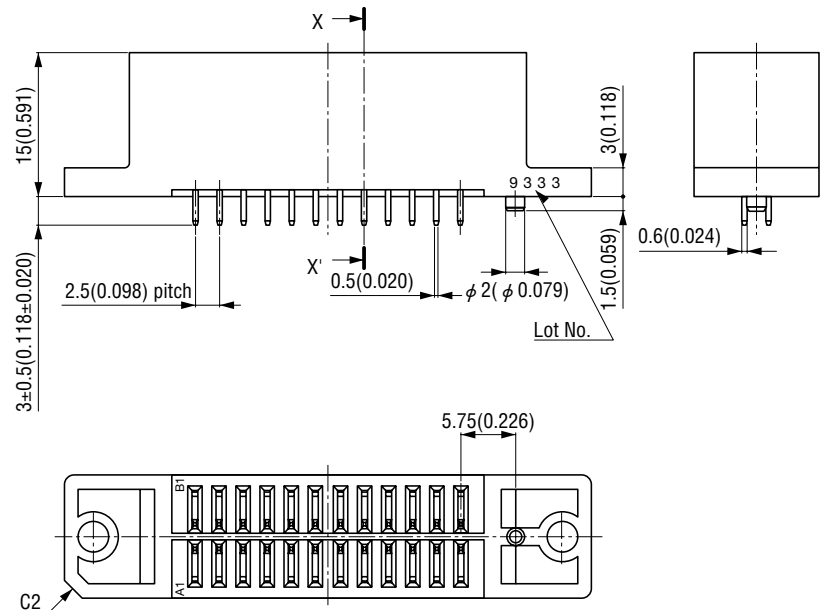
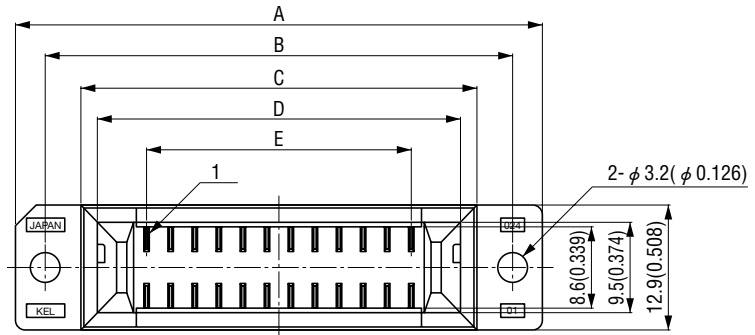
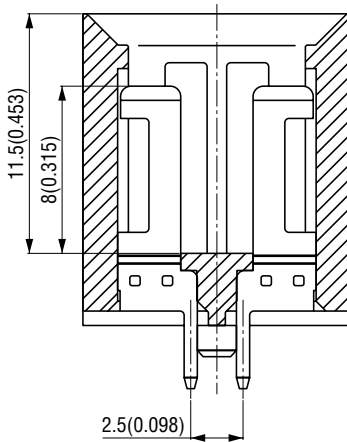
### FA11-□□□ (Plug)

Plug (PCB side connector)

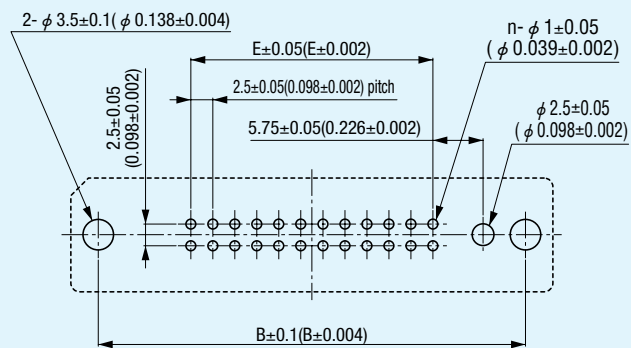


Unit:mm(inch)

X-X' Cross Section



Printed Circuit Board Layout  
(Component Side View)



"n" is number of contacts.

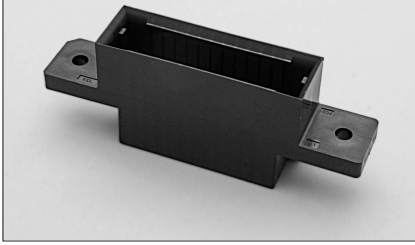
Packaging style  
Pipe

Product Table / Dimensions

No. of contacts	Part Number	A	B	C	D	E	Number of packaging
8	FA11-008	34.8 (1.370)	28.6 (1.126)	21.2 (0.835)	17.8 (0.701)	7.5 (0.295)	14
10	FA11-010	37.3 (1.469)	31.1 (1.224)	23.7 (0.933)	20.3 (0.799)	10.0 (0.394)	13
12	FA11-012	39.8 (1.567)	33.6 (1.323)	26.2 (1.031)	22.8 (0.898)	12.5 (0.492)	12
14	FA11-014	42.3 (1.665)	36.1 (1.421)	28.7 (1.130)	25.3 (0.996)	15.0 (0.591)	12
16	FA11-016	44.8 (1.764)	38.6 (1.520)	31.2 (1.228)	27.8 (1.094)	17.5 (0.689)	11
18	FA11-018	47.3 (1.862)	41.1 (1.618)	33.7 (1.327)	30.3 (1.193)	20.0 (0.787)	10
20	FA11-020	49.8 (1.961)	43.6 (1.717)	36.2 (1.425)	32.8 (1.291)	22.5 (0.886)	10
22	FA11-022	52.3 (2.059)	46.1 (1.815)	38.7 (1.524)	35.3 (1.390)	25.0 (0.984)	9
24	FA11-024	54.8 (2.157)	48.6 (1.913)	41.2 (1.622)	37.8 (1.488)	27.5 (1.083)	9
32	FA11-032	64.8 (2.551)	58.6 (2.307)	51.2 (2.016)	47.8 (1.882)	37.5 (1.476)	7

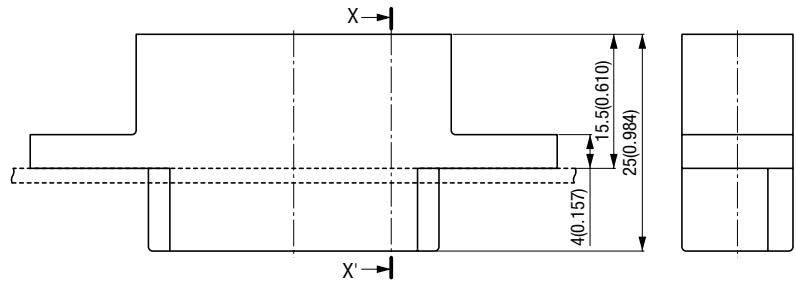
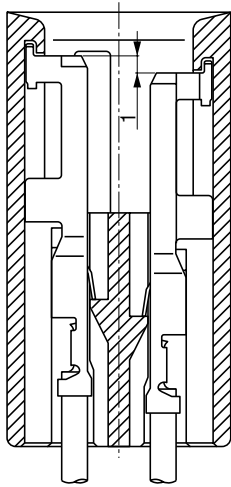
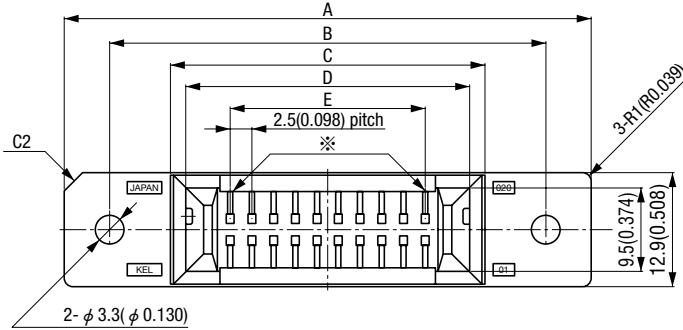
**FA12-□□□ (Cable Plug, Housing)**

Cable Plug (Cable side connector for cable to cable)

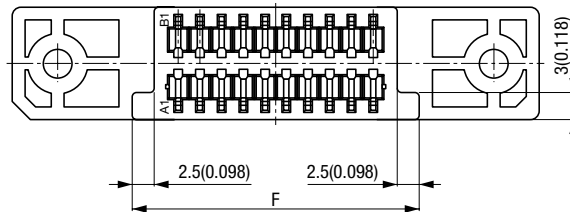


Unit:mm(inch)

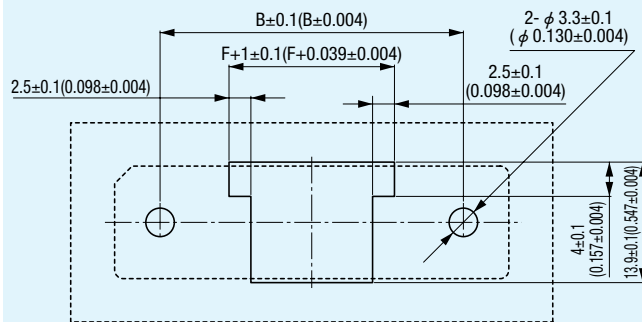
**X-X' Cross Section**



\*Hot-swap positions A1 and An/2 are two places.



**Printed Circuit Board Layout  
(Component Side View)**



Packaging style  
Tray

**Product Table / Dimensions**

No. of contacts	Part Number	A	B	C	D	E	Number of packaging
8	FA12-008	45.7 (1.799)	35.2 (1.386)	21.2 (0.835)	17.8 (0.701)	7.5 (0.295)	84
20	FA12-020	60.7 (2.390)	50.2 (1.976)	36.2 (1.425)	32.8 (1.291)	22.5 (0.886)	60
24	FA12-024	65.7 (2.587)	55.2 (2.173)	41.2 (1.622)	37.8 (1.488)	27.5 (1.083)	60
38	FA12-038	83.2 (3.276)	72.7 (2.862)	58.7 (2.311)	55.3 (2.177)	45.0 (1.772)	48
40	FA12-040	85.7 (3.374)	75.2 (2.961)	61.2 (2.409)	57.8 (2.276)	47.5 (1.870)	48