



**CEN LINK** CO., LTD.  
CONNECTORS

**CEN**



[www.cenlink.com.tw](http://www.cenlink.com.tw)

# CONTENTS

## SLIMLINE SATA(7+6) ▶



A01\_TBN0-01122-X0XX



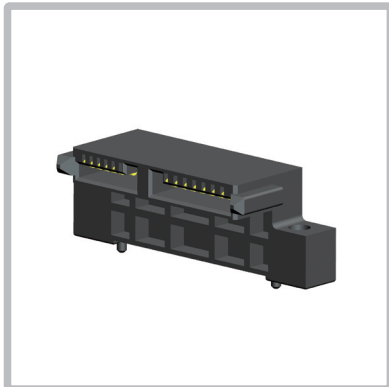
A02\_TBN0-01221-10XXA



A03\_TBN0-01320-10XX



A04\_TBN0-01410-X0XXA



A05\_TBN0-01520-10XXA



A06\_TBN0-01621-10XXA



A07\_TBN0-02101-00XX



A08\_TBN0-02211-00XXA



A09\_TBN0-02310-00XXA

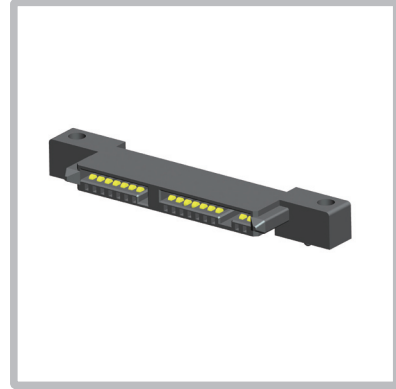


A10\_TBN1-02101-00XXA

**MICRO  
SATA(7+9)**



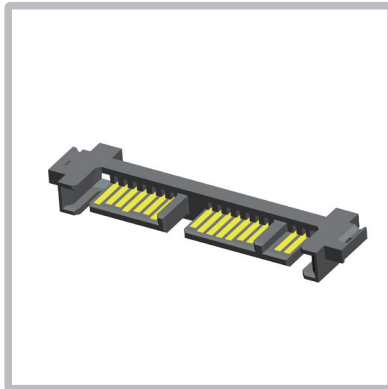
B01\_TBN0-10100-00XX



B02\_TBN0-10200-00XX



B03\_TBN0-10300-00XXA

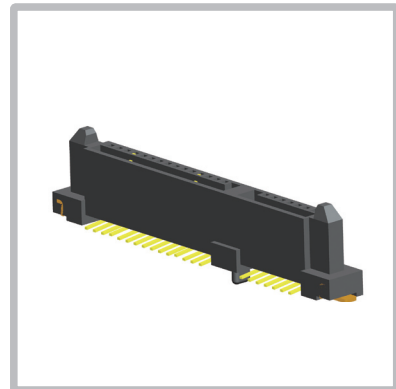


B04\_TBN1-10100-00XX

**SATA(7+15)**



C01\_TBF0-01100-X0XX



C02\_TBF0-01200-22XX



C03\_TBF0-01301-2XXX



C04\_TBF0-01302-22XX



C05\_TBF0-01303-21XX

# CONTENTS



C06\_TBF0-01304-20XXA



C07\_TBF0-01306-20XX



C08\_TBF0-01307-20XX



C09\_TBF0-01307-2XXX



C10\_TBF0-01307-23XX



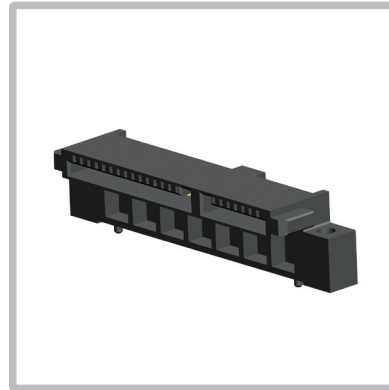
C11\_TBF0-01308-20XX



C12\_TBF0-01309-20XX



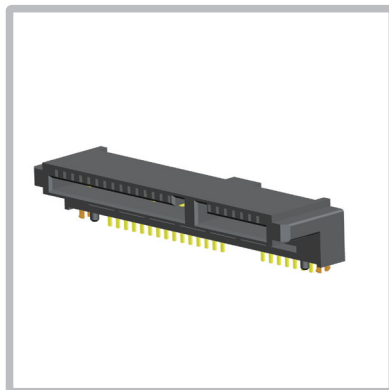
C13\_TBF0-0130A-2XXXA



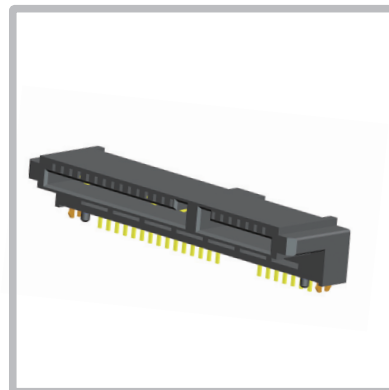
C14\_TBF0-0130B-20XXA



C15\_TBF0-0130C-20XXA



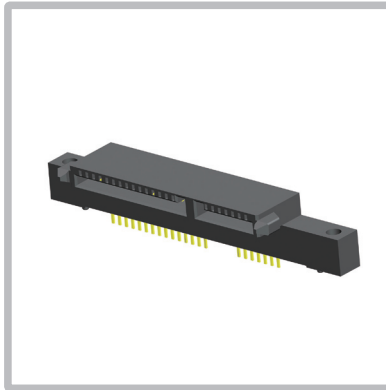
C16\_TBF0-0130D-20XXA



C17\_TBF0-0130D-21XXA



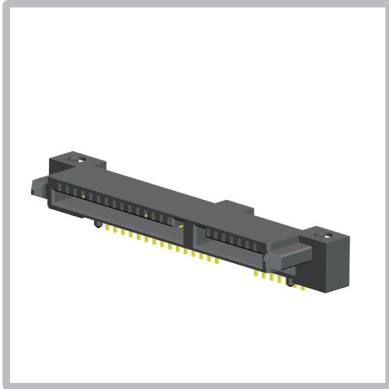
C18\_TBF0-0130E-20XXA



C19\_TBF0-0130F-20XXA



C20\_TBF0-0130G-20XXA



C21\_TBF0-0130H-20XXA



C22\_TBF0-0130J-20XXA

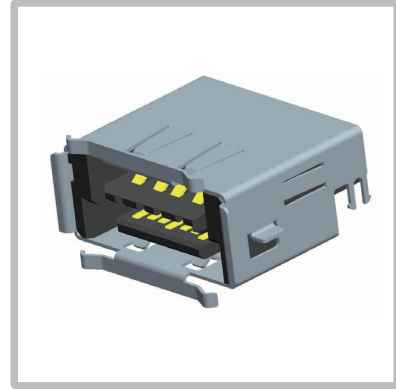


C23\_TBF0-01401-20XXA



C24\_TBF0-01402-21XXA

**eSATA+USB  
(2 in 1)**  
▶



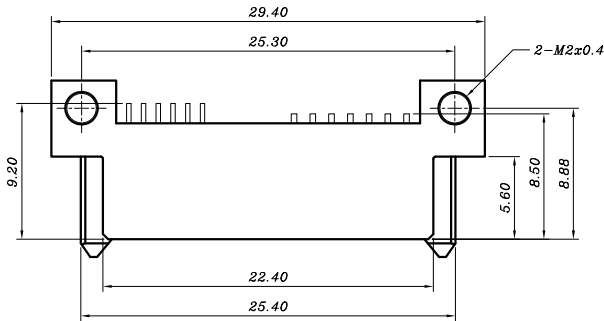
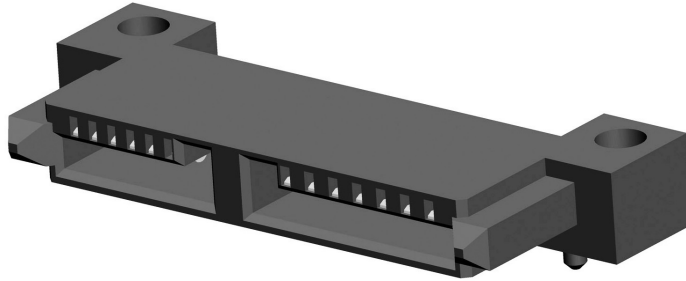
D01\_TBN0-03101-00XX

# SLIMLINE SATA

## ORDER INFORMATION

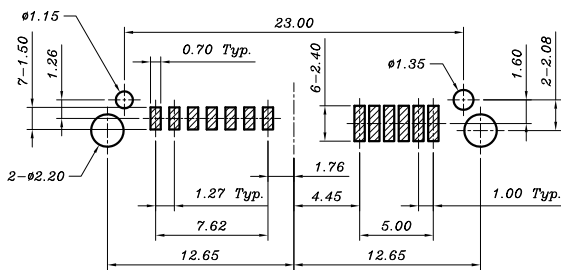
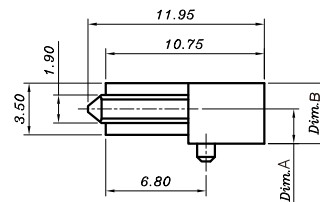
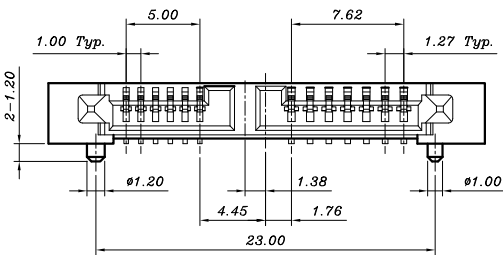
TBNO-01122 -  $\frac{X}{a} 0 \frac{X}{b} \frac{X}{c}$

a=Dim. Option  
b=Packing Option  
c=Plating Option



Dimension Information :

P/N:	Dim.A	Dim.B
TBNO-01122-10XX	1.85	3.60
* TBNO-01122-20XX	2.35	4.10
* TBNO-01122-30XX	2.85	4.60
* TBNO-01122-40XX	3.40	5.15
TBNO-01122-50XX	3.85	5.60
* TBNO-01122-60XX	4.35	6.10
TBNO-01122-70XX	4.85	6.60
TBNO-01122-80XX	5.35	7.10
TBNO-01122-90XX	5.85	7.60
TBNO-01122-A0XX	8.25	10.0



Recommended P.C.B. Layout  
Layout Tolerance = ± 0.05 mm

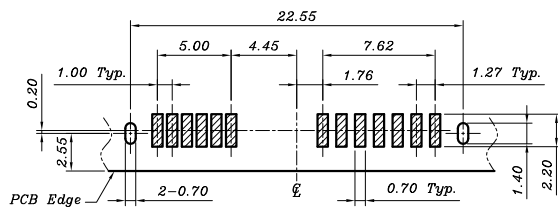
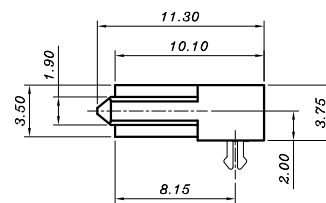
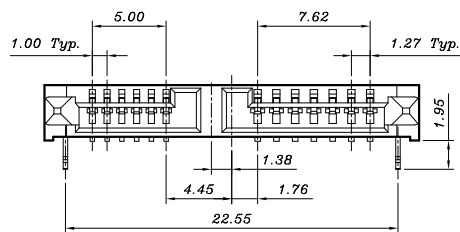
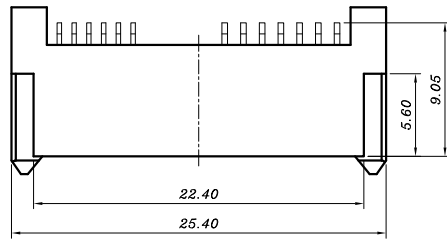
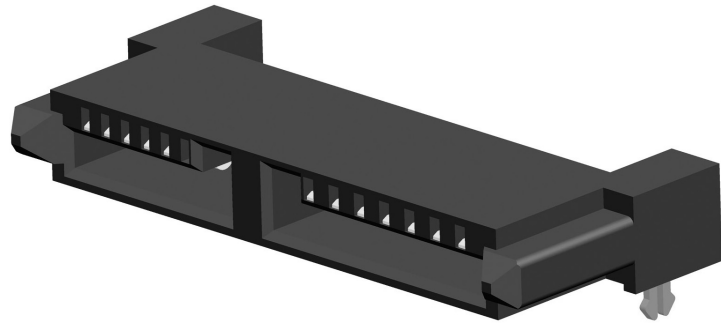
# SLIMLINE SATA

## ORDER INFORMATION

TBNO-01221 - 10  $\frac{X}{a}$   $\frac{X}{b}$  A

$a$ =Packing Option

$b$ =Plating Option



Recommended P.C.B. Layout  
Layout Tolerance =  $\pm 0.05$  mm

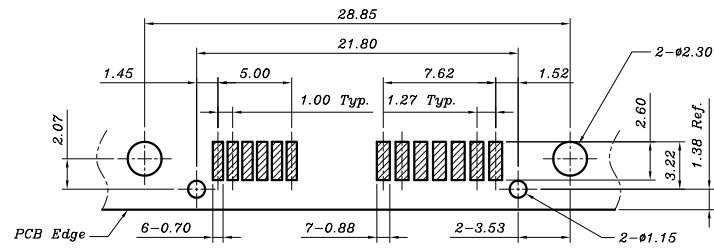
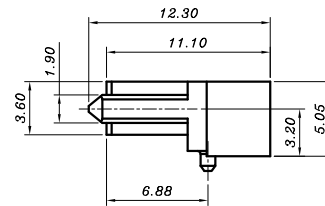
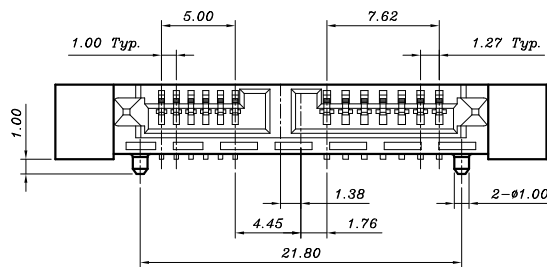
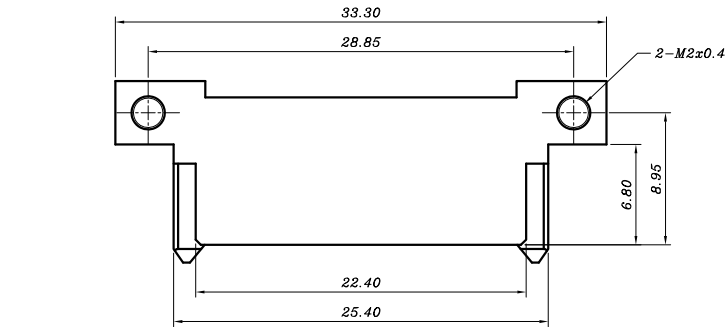
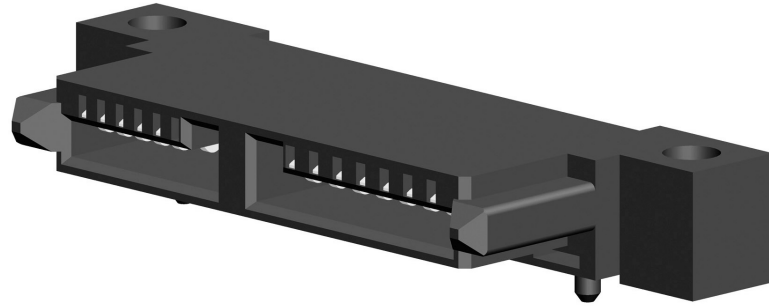
# SLIMLINE SATA

## ORDER INFORMATION

TBN0-01320 - 10  $\frac{X}{a} \frac{X}{b}$

a=Packing Option

b=Plating Option



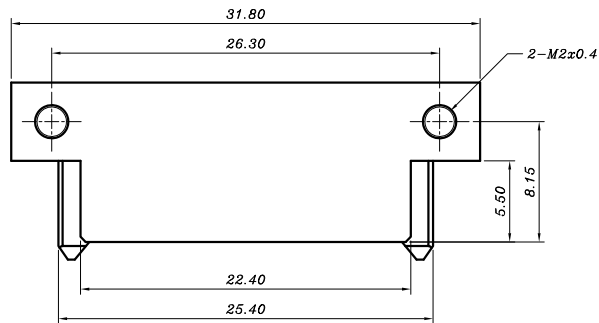
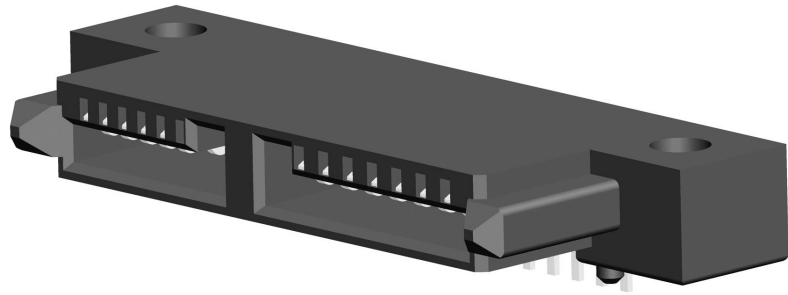
Recommended P.C.B. Layout  
Layout Tolerance = ± 0.05 mm

# SLIMLINE SATA

## ORDER INFORMATION

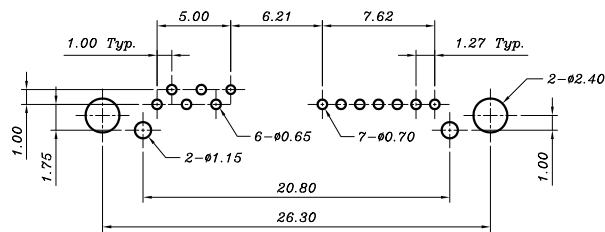
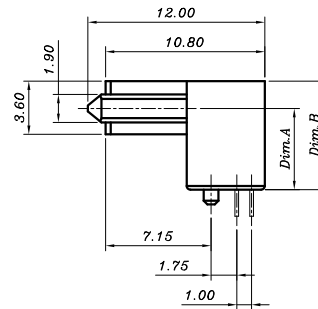
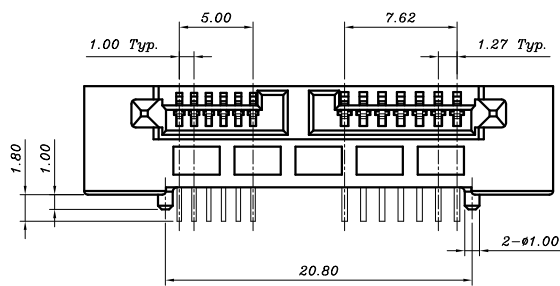
TBNO-01410 -  $\frac{X}{a} 0 \frac{X}{b} \frac{X}{c} A$

$\alpha=1$ - Dim.A = 2.50  
 $\alpha=2$ - Dim.A = 5.50  
**b**=Packing Option  
**c**=Plating Option



### Dimension Information :

P/N:	Dim.A	Dim.B
TBNO-01410-10XXA	2.50	4.35
TBNO-01410-20XXA	5.50	7.35



Recommended P.C.B. Layout  
 Layout Tolerance =  $\pm 0.05$  mm

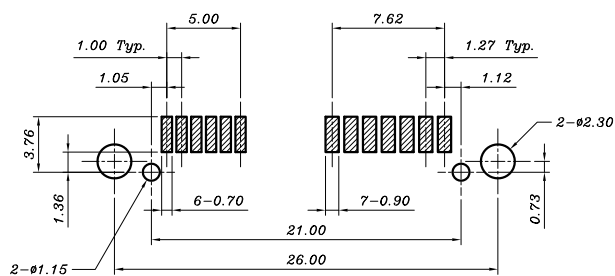
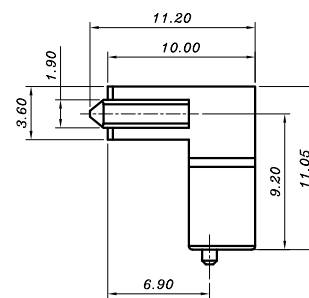
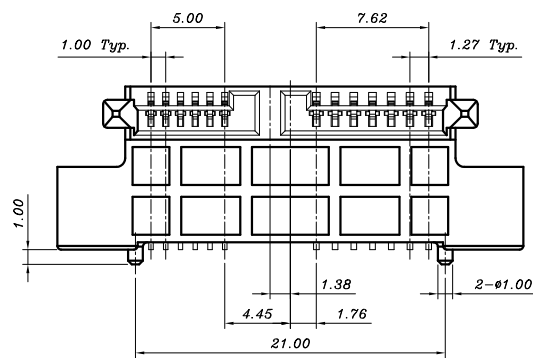
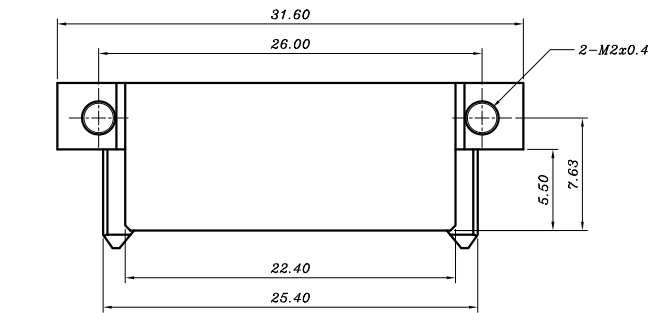
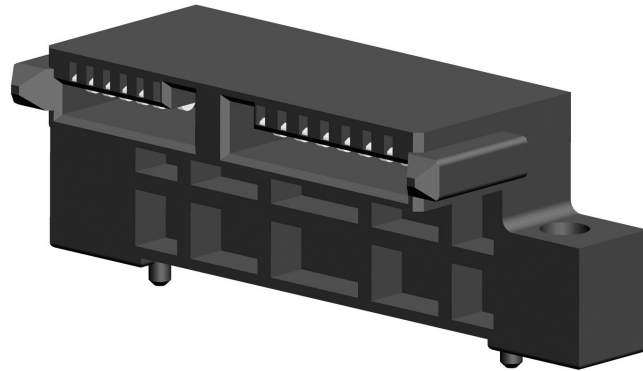
# SLIMLINE SATA

## ORDER INFORMATION

TBNO-01520 - 10  $\frac{X}{a} \frac{X}{b} A$

a=Packing Option

b=Plating Option



Recommended P.C.B. Layout  
Layout Tolerance = ± 0.05 mm

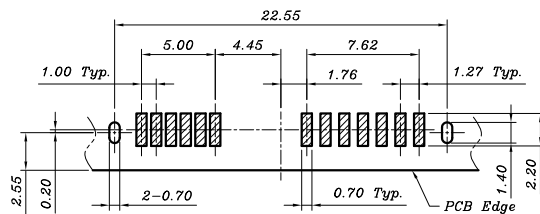
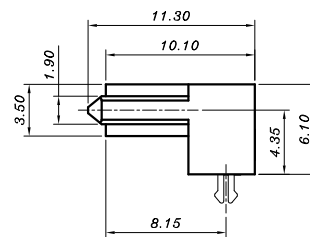
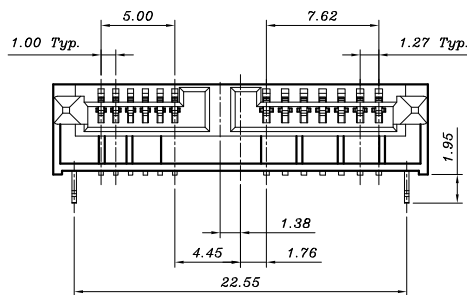
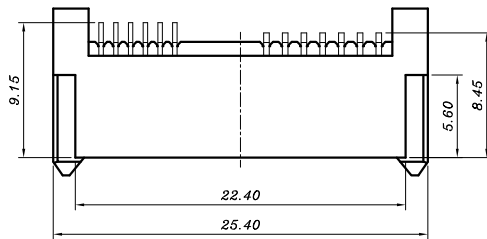
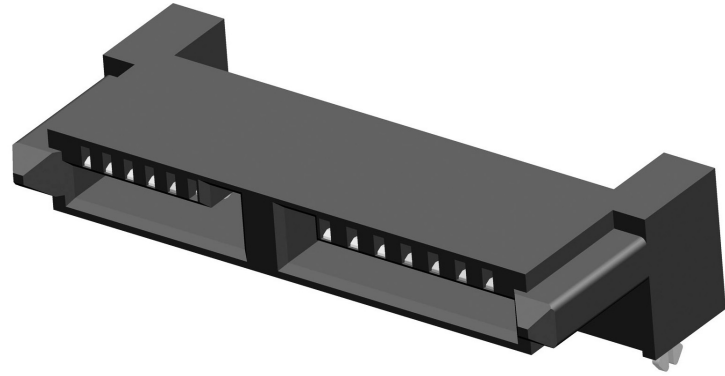
# SLIMLINE SATA

## ORDER INFORMATION

TBN0-01621 - 10  $\frac{X}{a} \frac{X}{b} A$

$a$ =Packing Option

$b$ =Plating Option



Recommended P.C.B. Layout  
Layout Tolerance =  $\pm 0.05$  mm

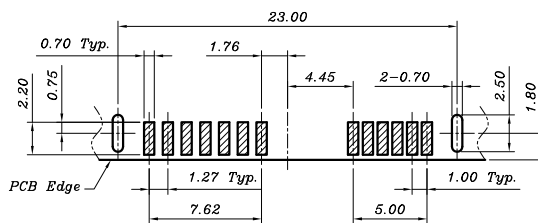
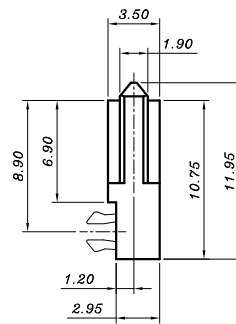
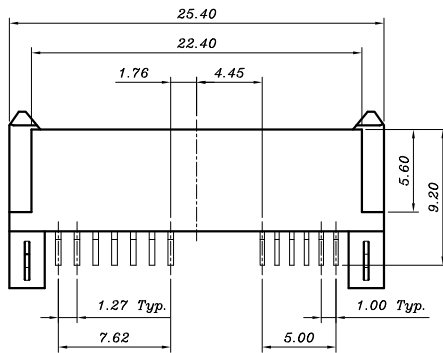
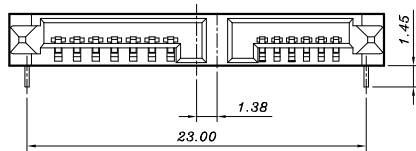
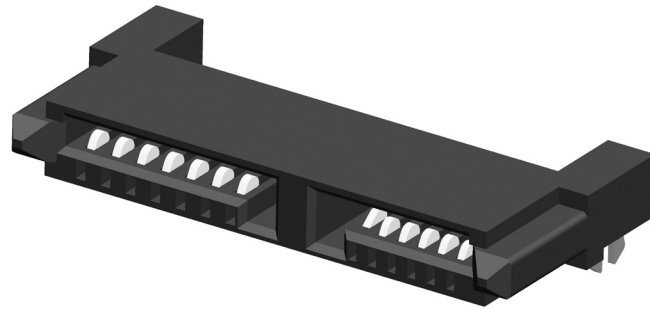
# SLIMLINE SATA

## ORDER INFORMATION

TBNO-02101 - 00  $\frac{X}{a} \frac{X}{b}$

a=Packing Option

b=Plating Option



Recommended P.C.B. Layout  
Layout Tolerance = ± 0.05 mm

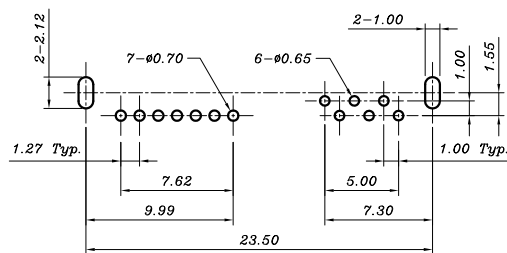
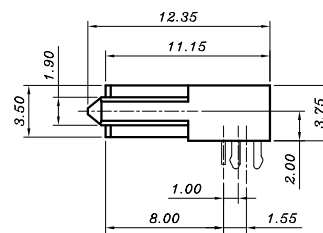
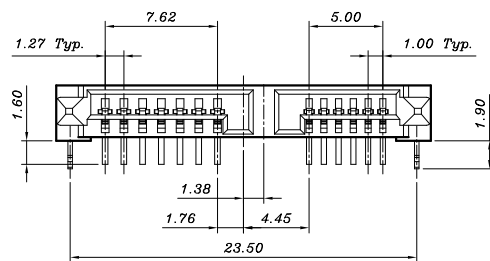
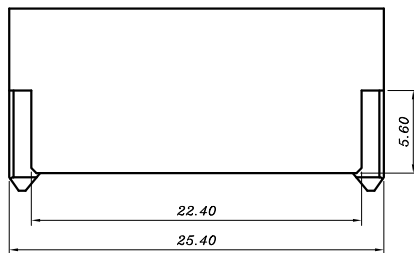
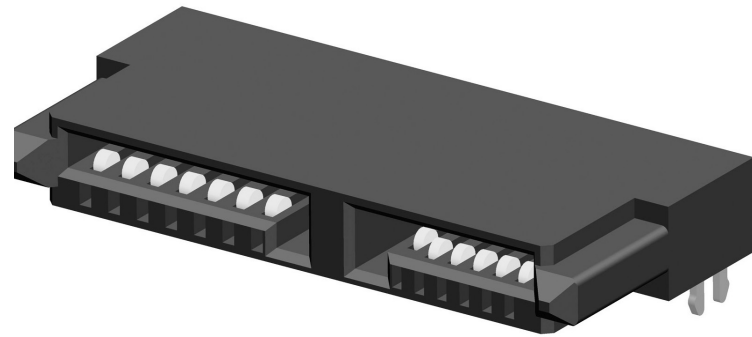
# SLIMLINE SATA

## ORDER INFORMATION

TBN0-02211 - 00  $\frac{X}{a} \frac{X}{b} A$

$a$ =Packing Option

$b$ =Plating Option



Recommended P.C.B. Layout  
Layout Tolerance =  $\pm 0.05$  mm

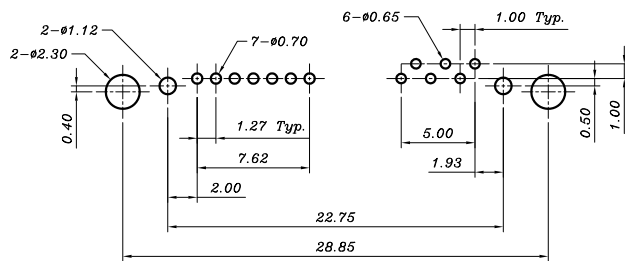
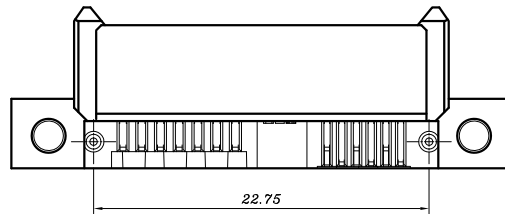
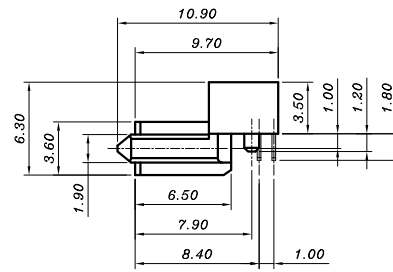
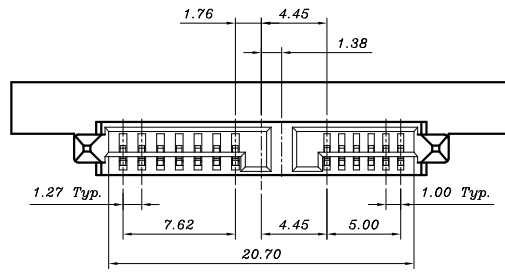
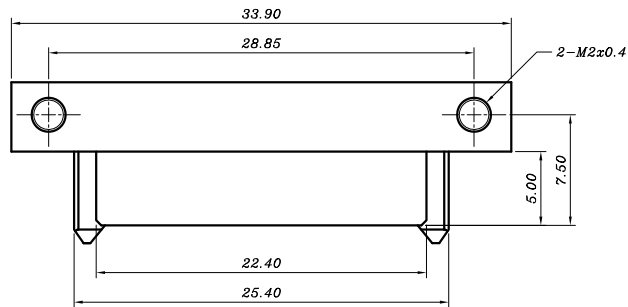
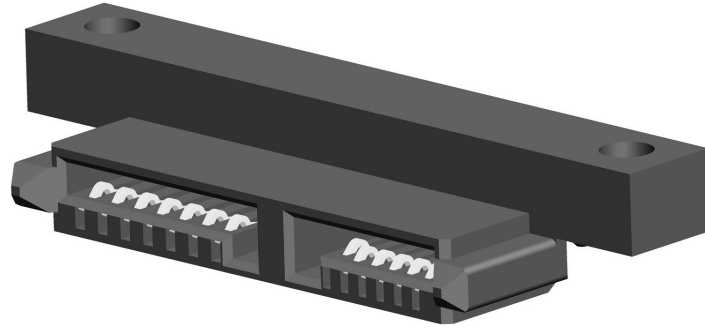
# SLIMLINE SATA

## ORDER INFORMATION

TBN0-02310 - 00  $\frac{X}{a} \frac{X}{b} A$

$a$ =Packing Option

$b$ =Plating Option



Recommended P.C.B. Layout  
Layout Tolerance =  $\pm 0.05$  mm

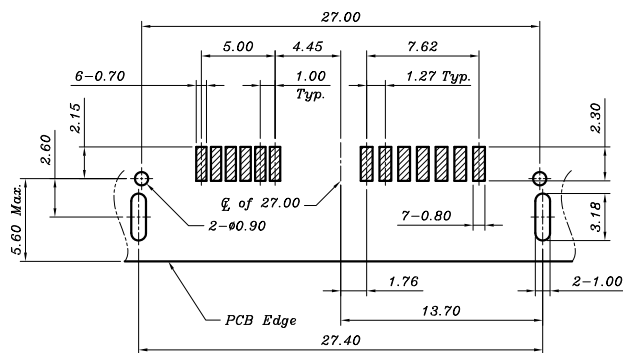
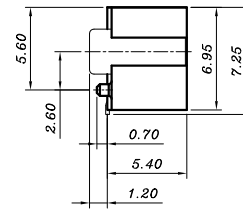
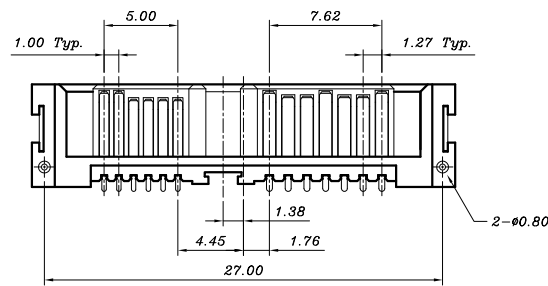
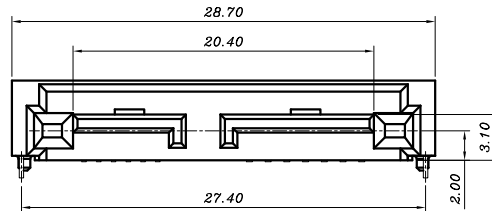
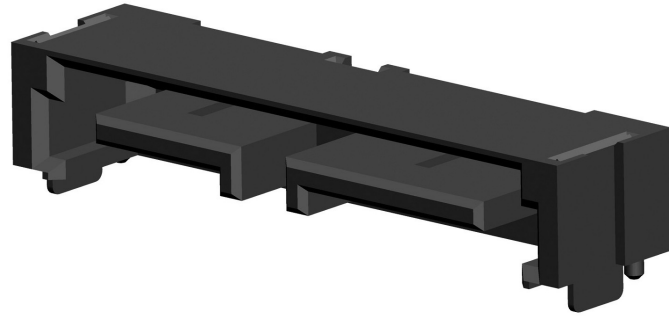
# SLIMLINE SATA, MALE

## ORDER INFORMATION

TBN1-02101 - 00  $\frac{X}{a} \frac{X}{b} A$

$a$ =Packing Option

$b$ =Plating Option



Recommended P.C.B. Layout  
Layout Tolerance =  $\pm 0.05$  mm

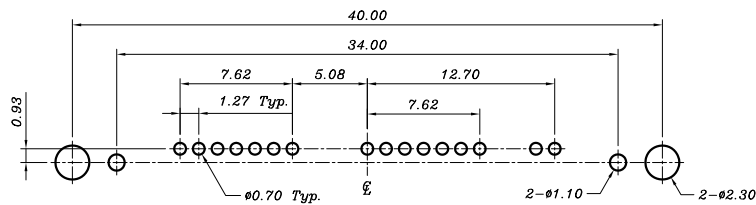
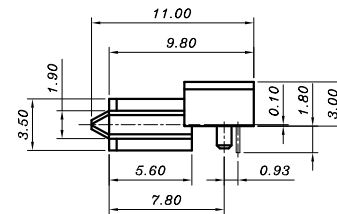
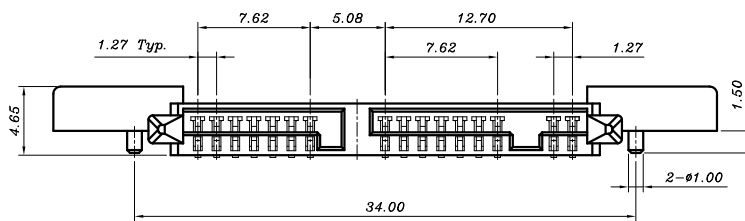
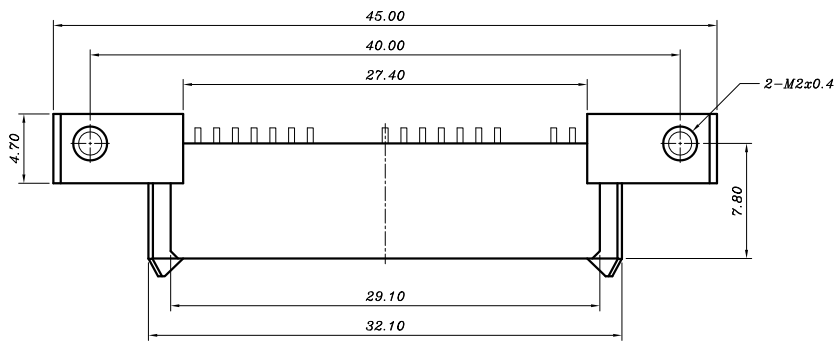
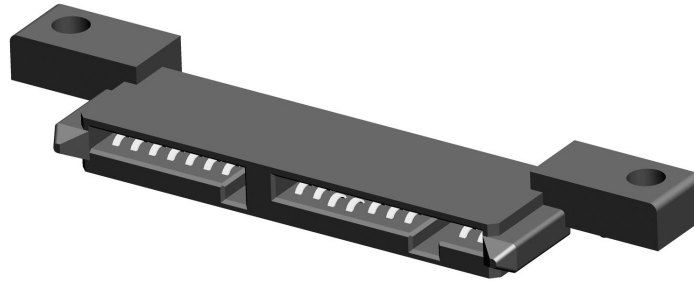
# MICRO SATA

## ORDER INFORMATION

TBNO-10100 - 00  $\frac{X}{a} \frac{X}{b}$

a=Packing Option

b=Plating Option



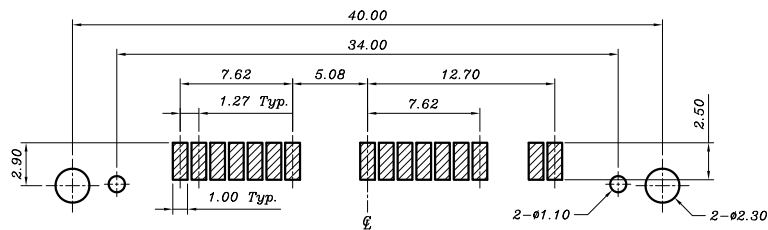
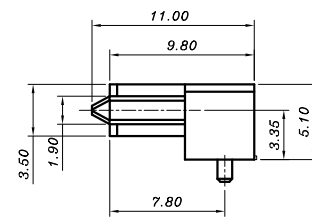
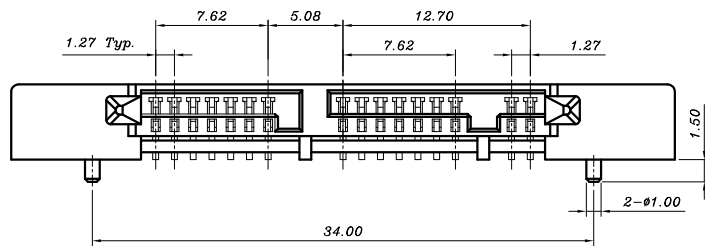
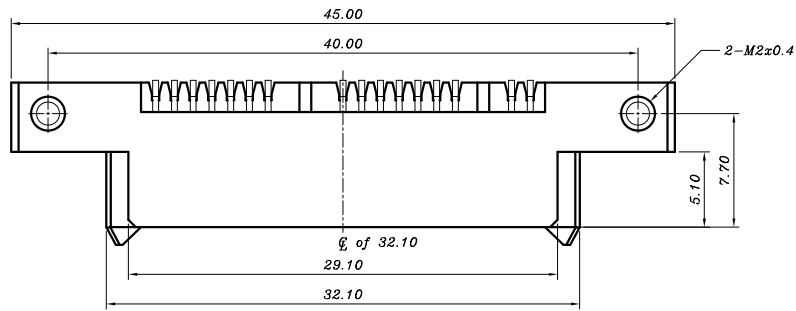
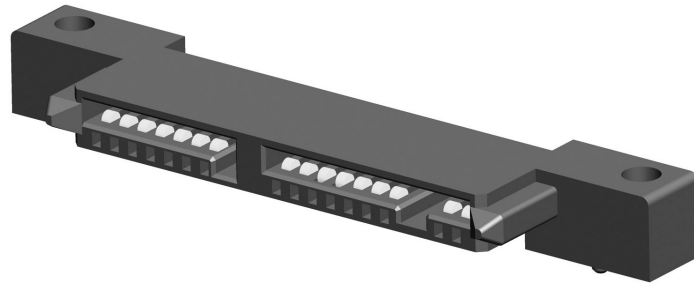
Recommended P.C.B. Layout  
Layout Tolerance = ± 0.05 mm

# MICRO SATA

## ORDER INFORMATION

TBN0-10200 - 00  $\frac{X}{a} \frac{X}{b}$

$a$ =Packing Option  
 $b$ =Plating Option



Recommended P.C.B. Layout  
 Layout Tolerance =  $\pm 0.05$  mm

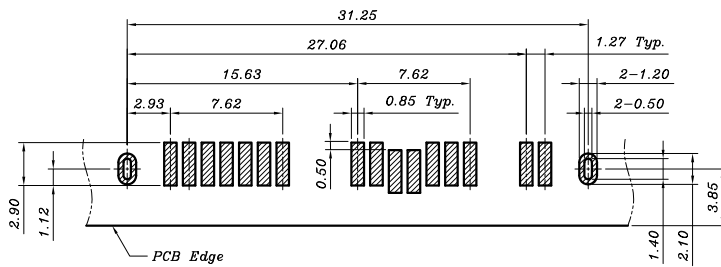
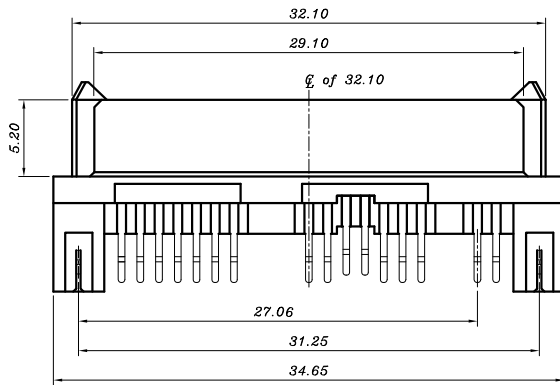
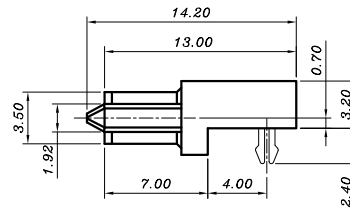
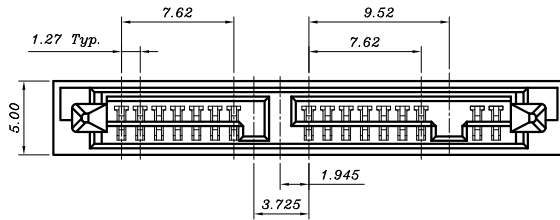
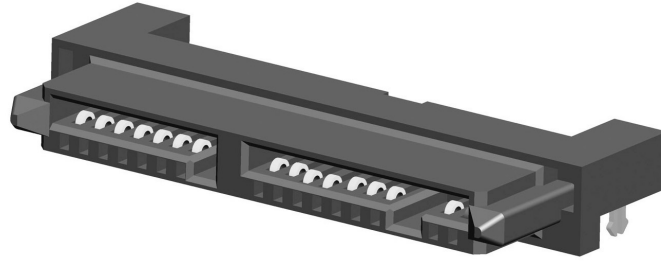
# MICRO SATA

## ORDER INFORMATION

TBN0-10300 - 00  $\frac{X}{a} \frac{X}{b} A$

a=Packing Option

b=Plating Option



Recommended P.C.B. Layout  
Layout Tolerance = ± 0.05 mm

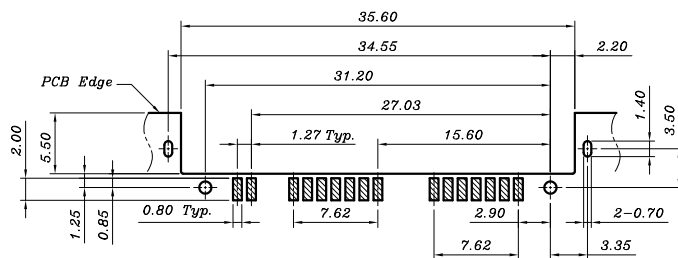
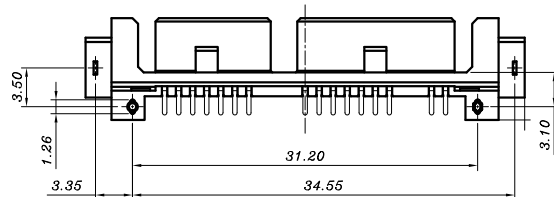
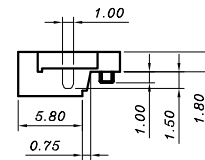
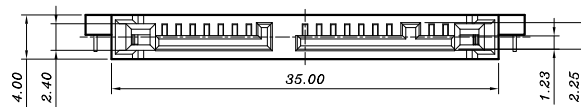
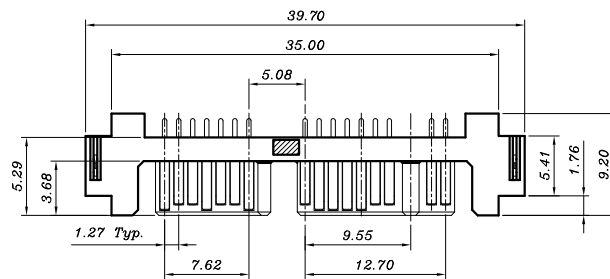
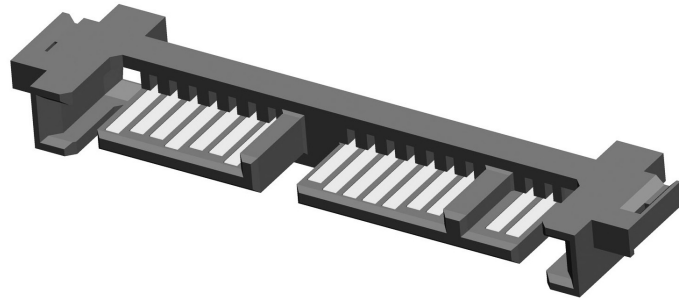
# MICRO SATA, MALE

## ORDER INFORMATION

TBN1-10100 - 00  $\frac{X}{a} \frac{X}{b}$

$a$ =Packing Option

$b$ =Plating Option



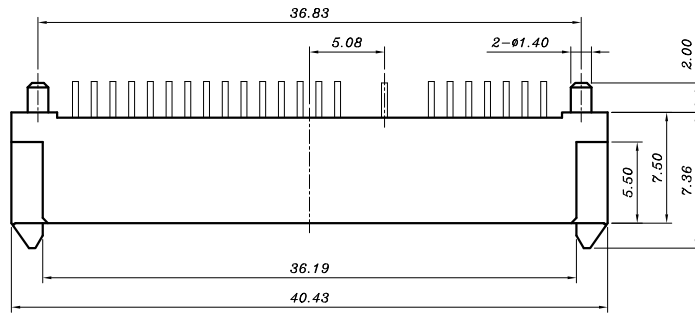
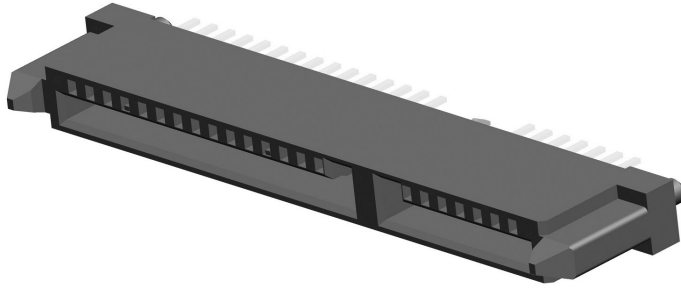
Recommended P.C.B. Layout  
Layout Tolerance =  $\pm 0.05$  mm

# SATA

## ORDER INFORMATION

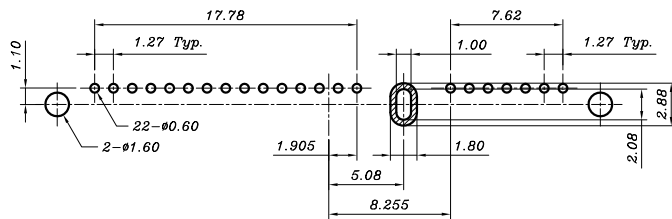
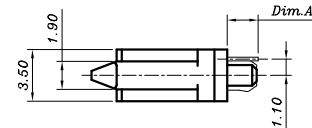
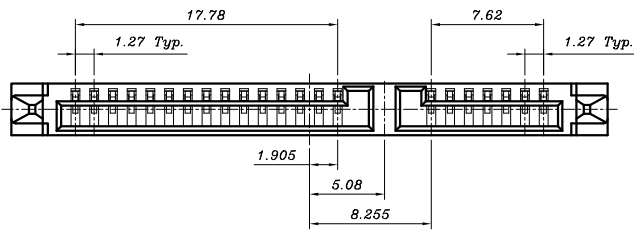
TBF0-01100 -  $\frac{X}{a}$  0  $\frac{X}{b}$   $\frac{X}{c}$

a=0 - Dim.A = 2.10  
 1 - Dim.A = 1.50  
 b=Packing Option  
 c=Plating Option



Dimension Information :

P/N:	Dim.A
TBF0-01100-00XX	2.10
TBF0-01100-10XX	1.50



Recommended P.C.B. Layout  
 Layout Tolerance = ± 0.05 mm

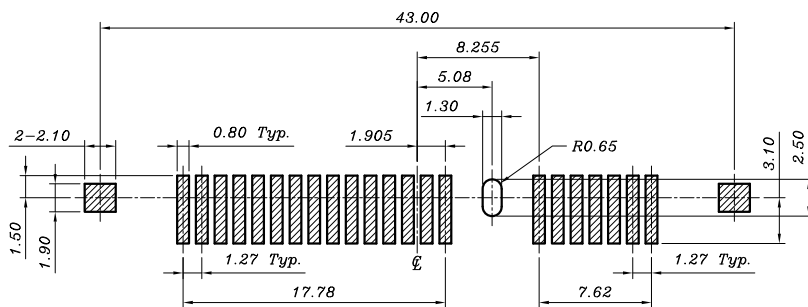
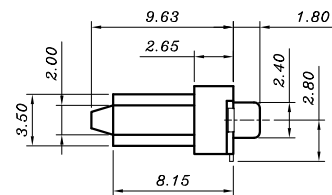
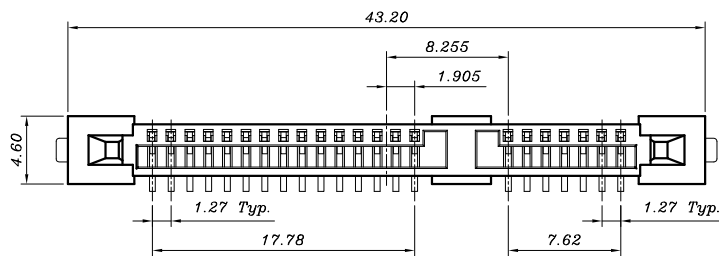
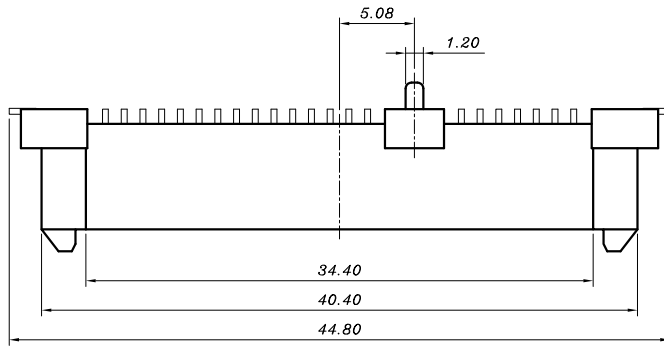
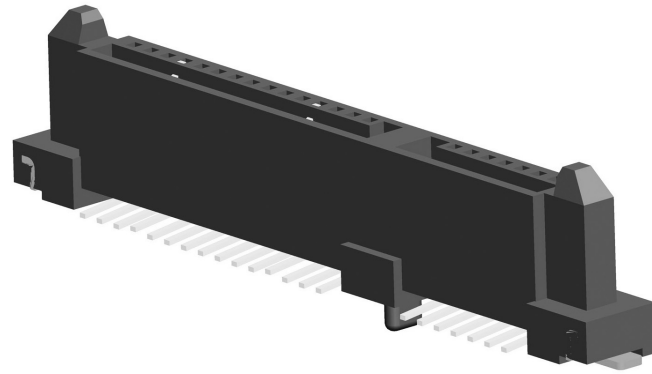
# SATA

## ORDER INFORMATION

TBF0-01200 - 22  $\frac{X}{a}$   $\frac{X}{b}$

$a$ =Packing Option

$b$ =Plating Option



Recommended P.C.B. Layout  
Layout Tolerance =  $\pm 0.05$  mm

## SATA

### ORDER INFORMATION

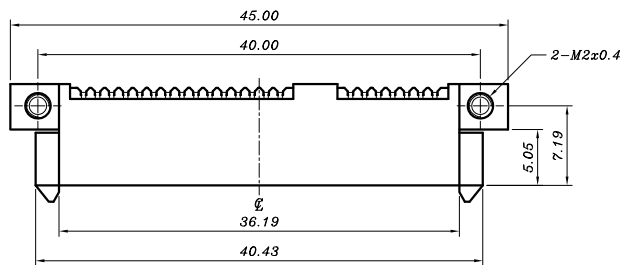
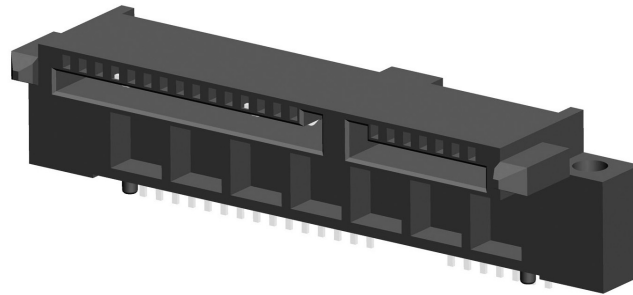
TBF0-01301 - 2  $\frac{X}{a} \frac{X}{b} \frac{X}{c}$

$\alpha=1$  - Dim.A = 8.50

2 - Dim.A = 6.00

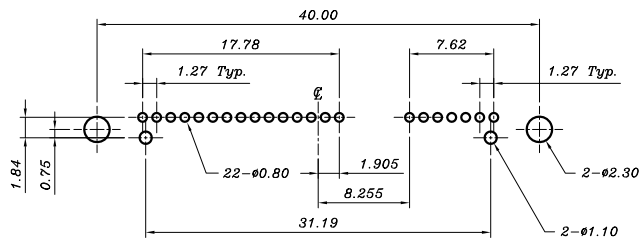
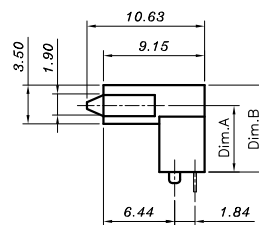
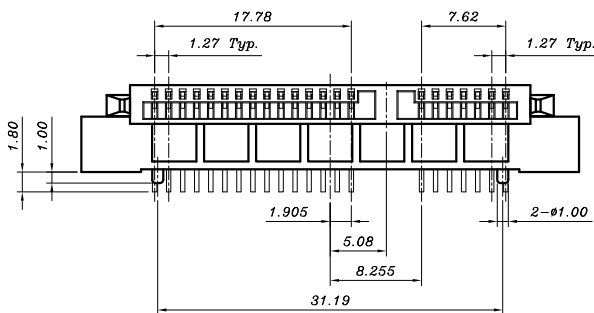
$b$  = Packing Option

$c$  = Plating Option



#### Dimension Information :

P/N:	Dim.A	Dim.B
TBF0-01301-21XX	8.50	10.35
TBF0-01301-22XX	6.00	7.85



Recommended P.C.B. Layout  
Layout Tolerance =  $\pm 0.05$  mm

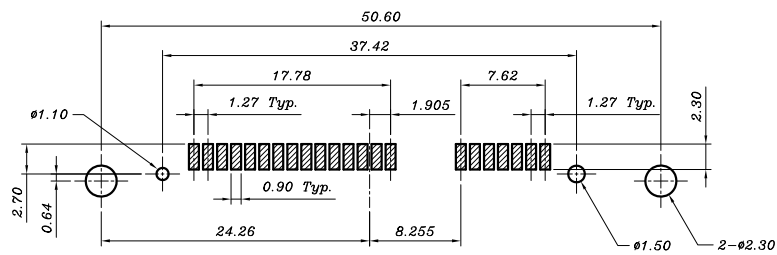
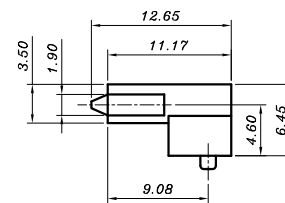
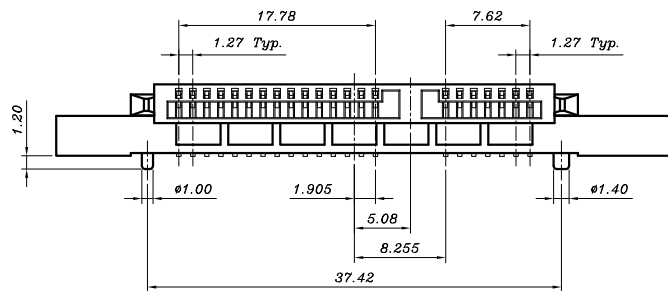
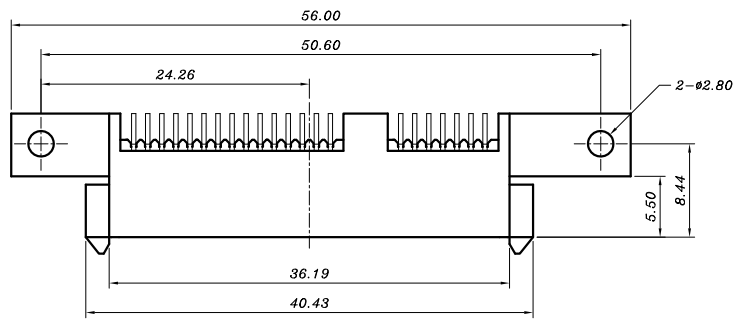
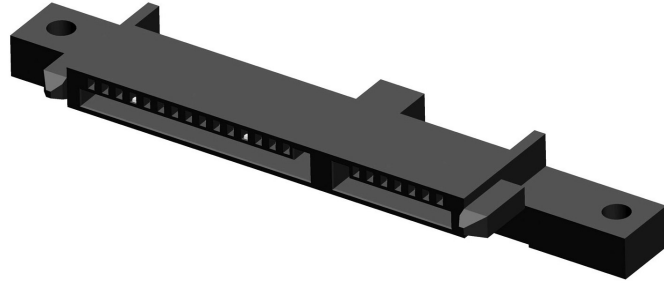
# SATA

## ORDER INFORMATION

TBF0-01302 - 22  $\frac{X}{a} \frac{X}{b}$

$a$ =Packing Option

$b$ =Plating Option



Recommended P.C.B. Layout  
Layout Tolerance =  $\pm 0.05$  mm

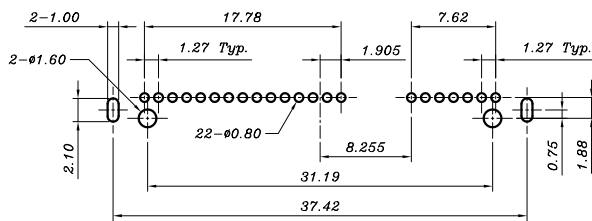
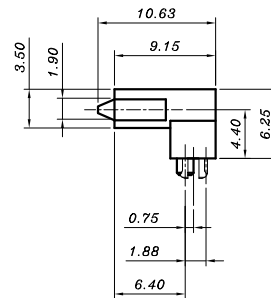
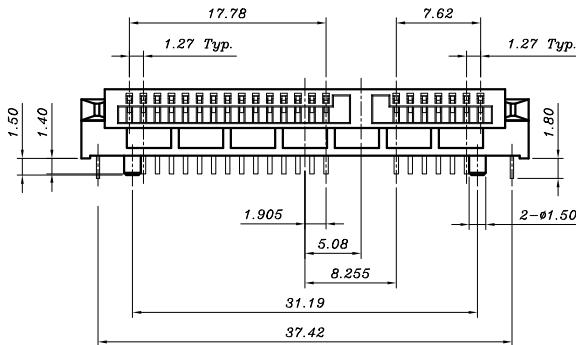
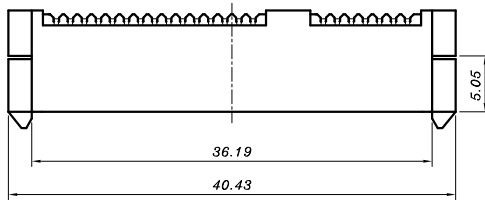
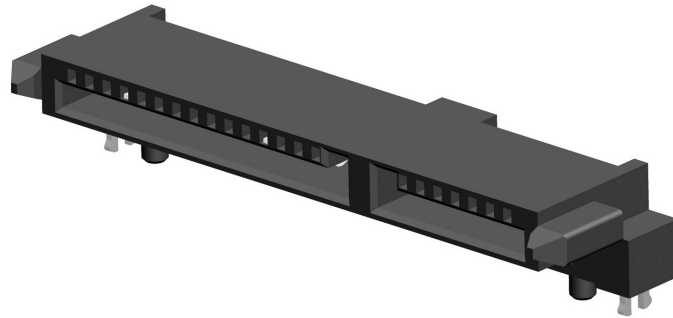
# SATA

## ORDER INFORMATION

TBF0-01303 - 21  $\frac{X}{a}$   $\frac{X}{b}$

a=Packing Option

b=Plating Option



Recommended P.C.B. Layout  
Layout Tolerance = ± 0.05 mm

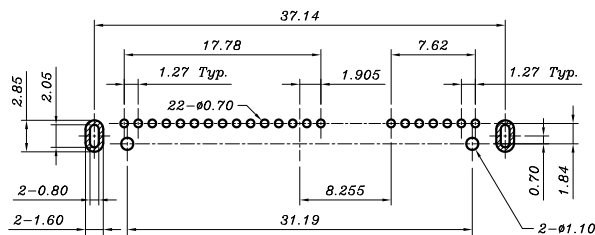
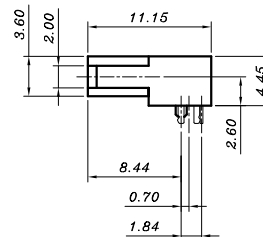
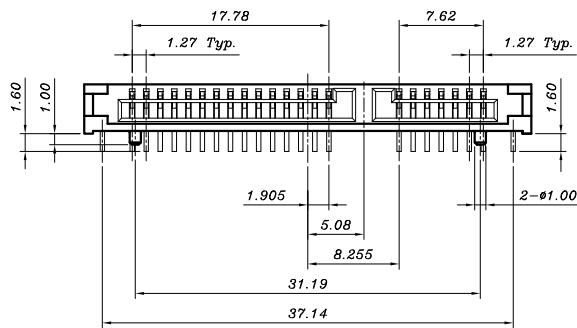
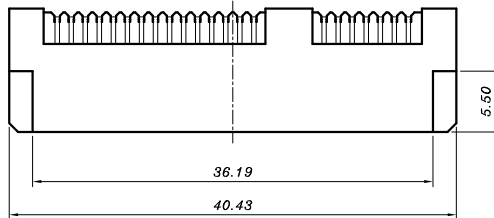
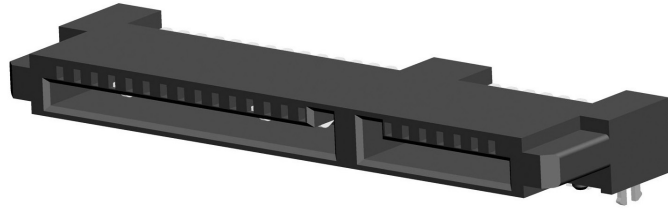
# SATA

## ORDER INFORMATION

TBF0-01304 - 20  $\frac{X}{a} \frac{X}{b} A$

$a$ =Packing Option

$b$ =Plating Option



Recommended P.C.B. Layout  
Layout Tolerance =  $\pm 0.05$  mm

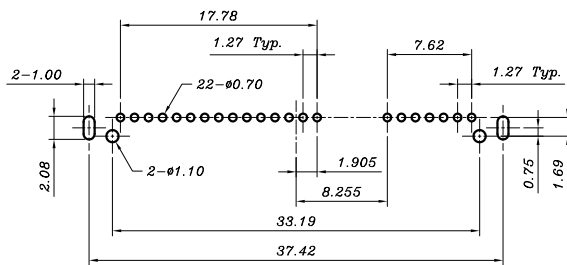
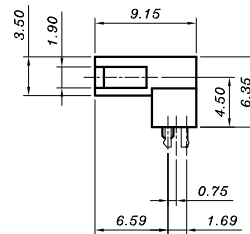
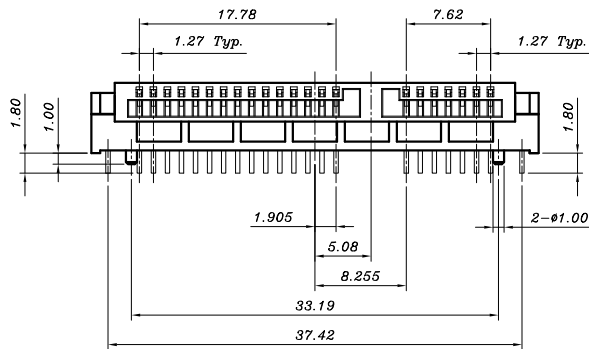
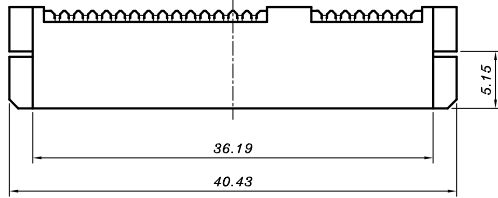
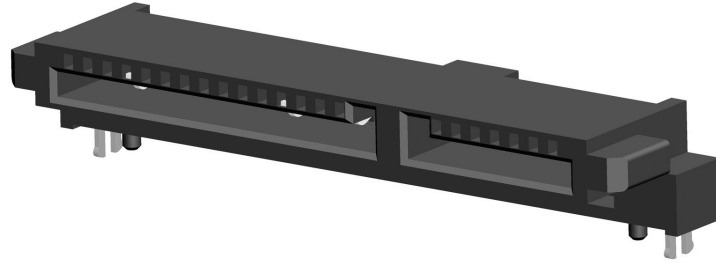
# SATA

## ORDER INFORMATION

TBF0-01306 - 20  $\frac{X}{a} \frac{X}{b}$

a=Packing Option

b=Plating Option



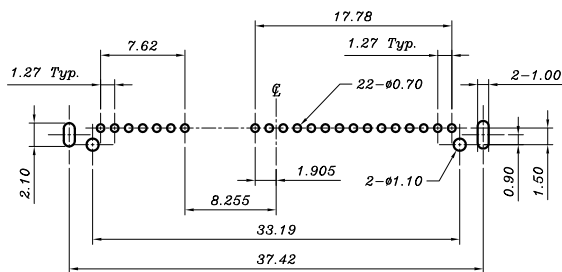
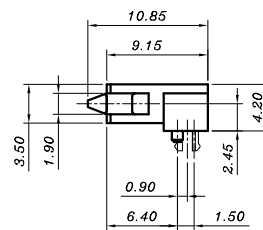
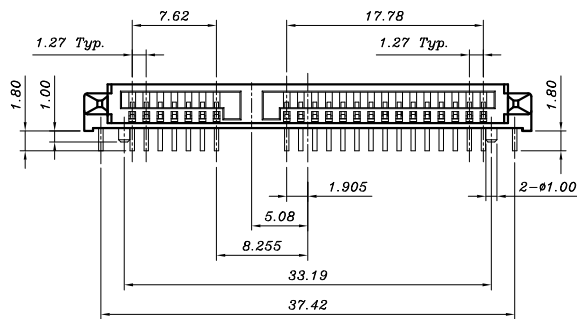
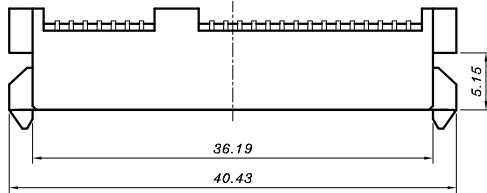
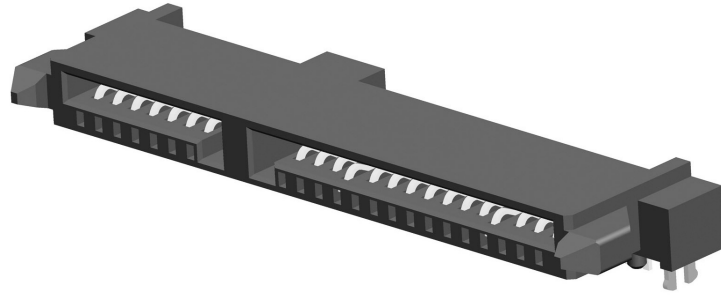
Recommended P.C.B. Layout  
Layout Tolerance = ± 0.05 mm

# SATA

## ORDER INFORMATION

TBF0-01307 - 20  $\frac{X}{a} \frac{X}{b}$

$a$ =Packing Option  
 $b$ =Plating Option



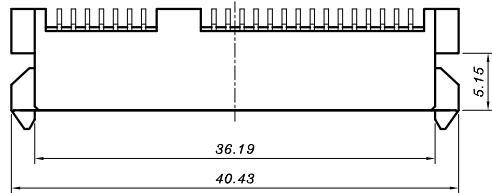
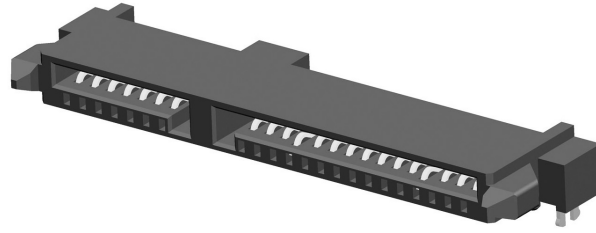
Recommended P.C.B. Layout  
 Layout Tolerance =  $\pm 0.05$  mm

# SATA

## ORDER INFORMATION

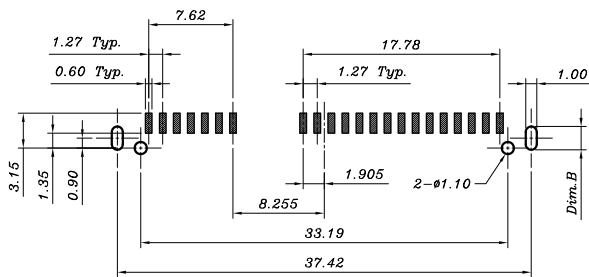
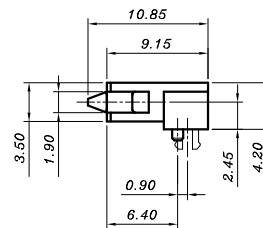
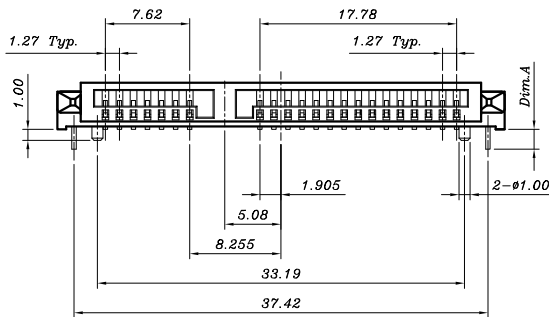
TBFO-01307 - 2  $\frac{X}{a}$   $\frac{X}{b}$   $\frac{X}{c}$

a=1-Dim.A = 1.80  
 2-Dim.A = 1.20  
 b=Packing Option  
 c=Plating Option



### Dimension Information :

P/N:	Dim.A	Dim.B
TBFO-01307-21XX	1.80	2.10
TBFO-01307-22XX	1.20	2.20



Recommended P.C.B. Layout  
 Layout Tolerance = ± 0.05 mm

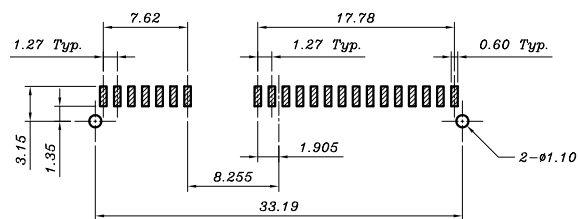
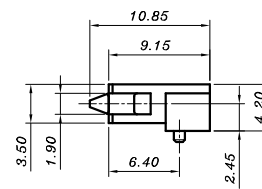
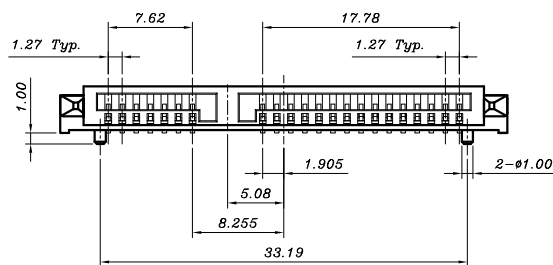
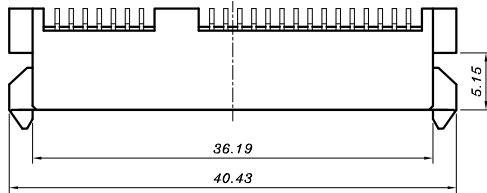
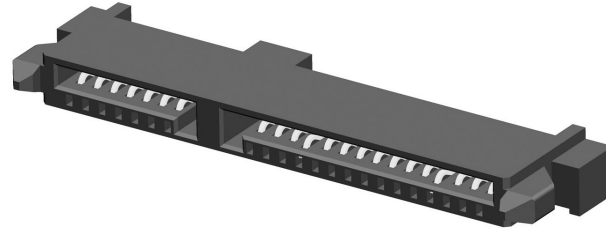
# SATA

## ORDER INFORMATION

TBF0-01307 - 23  $\frac{X}{a} \frac{X}{b}$

$a$ =Packing Option

$b$ =Plating Option



Recommended P.C.B. Layout  
Layout Tolerance =  $\pm 0.05$  mm

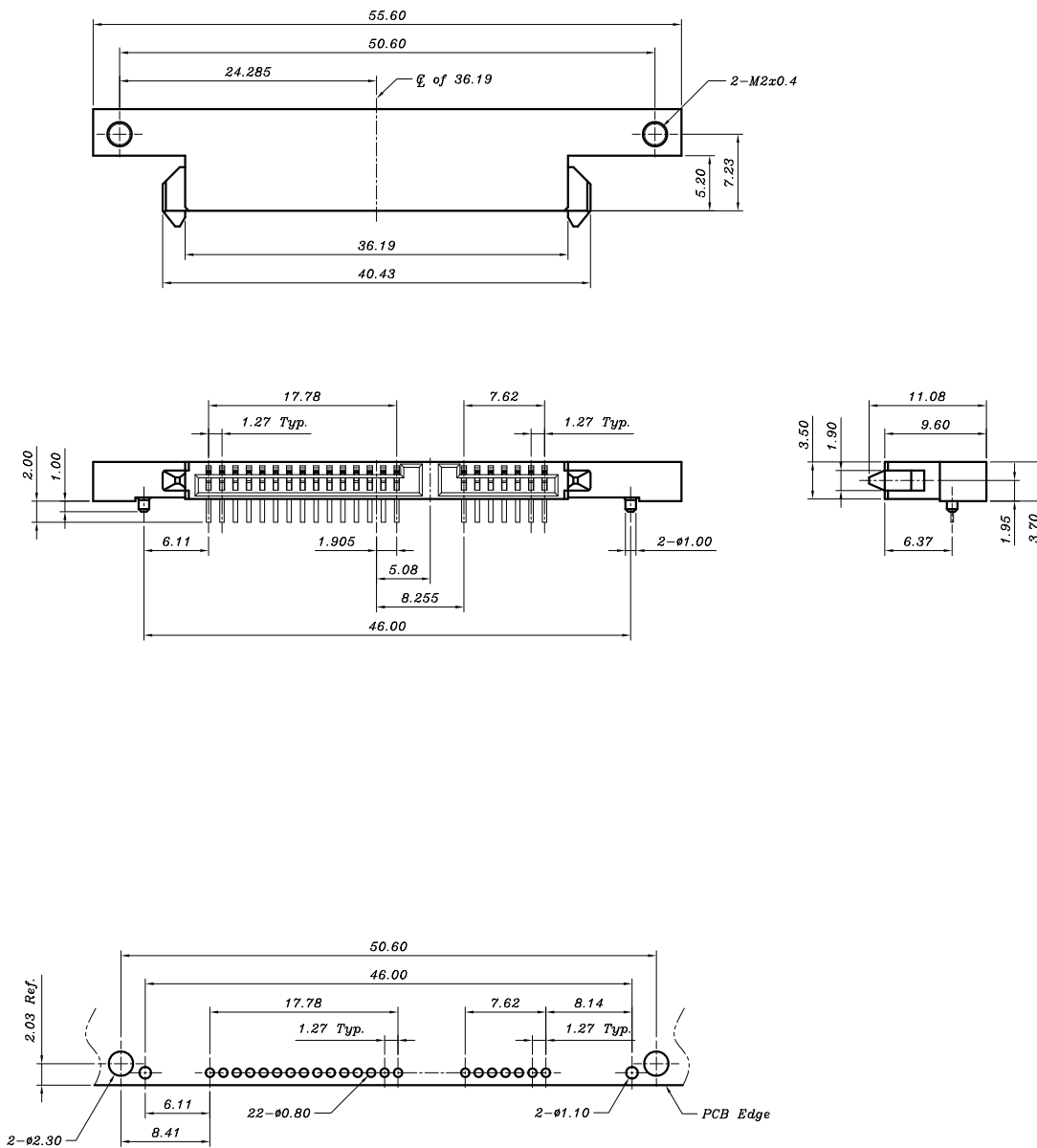
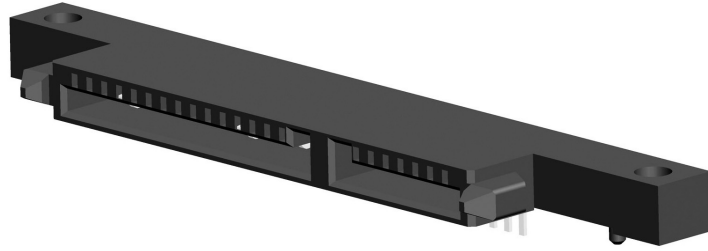
# SATA

## ORDER INFORMATION

TBF0-01308 - 20  $\frac{X}{a} \frac{X}{b}$

a=Packing Option

b=Plating Option



Recommended P.C.B. Layout  
Layout Tolerance = ± 0.05 mm

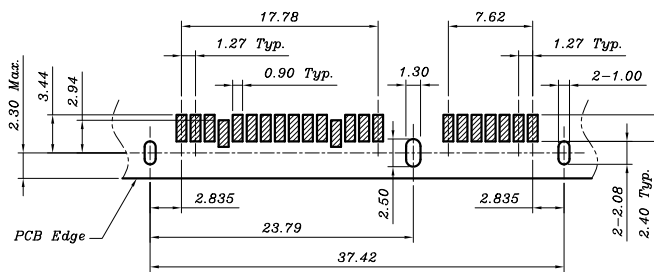
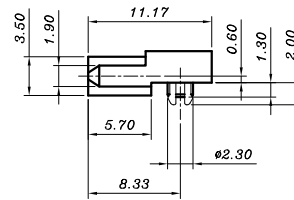
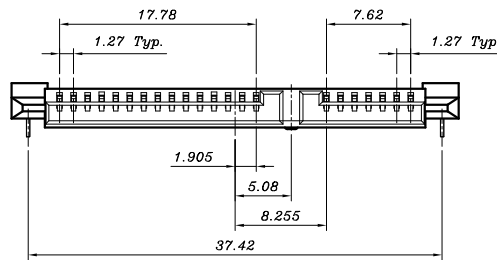
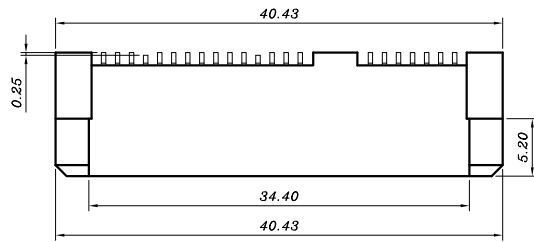
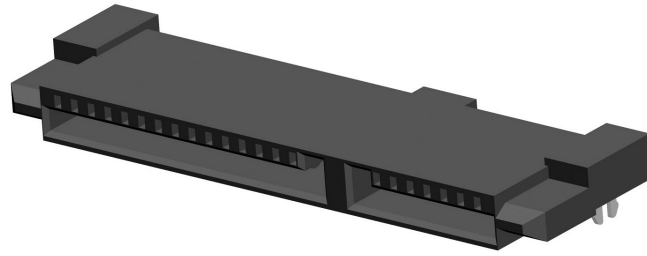
# SATA

## ORDER INFORMATION

TBF0-01309 - 20  $\frac{X}{a} \frac{X}{b}$

$a$ =Packing Option

$b$ =Plating Option



Recommended P.C.B. Layout  
Layout Tolerance =  $\pm 0.05$  mm

## SATA

### ORDER INFORMATION

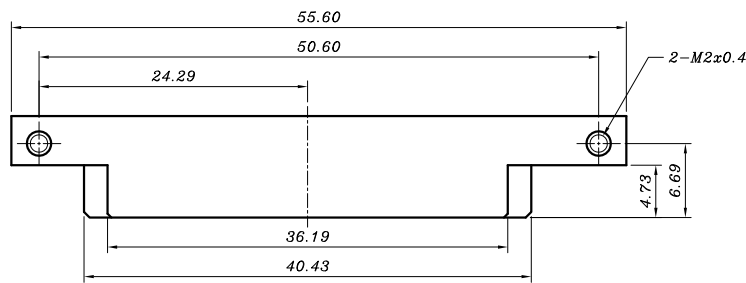
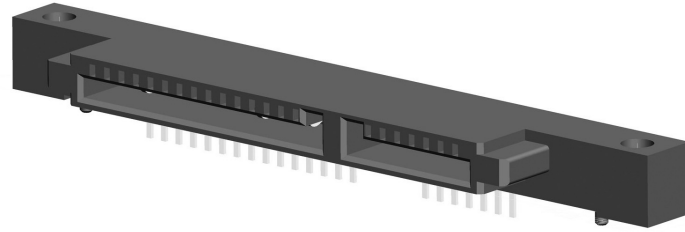
TBF0-0130A - 2  $\frac{X}{a}$   $\frac{X}{b}$   $\frac{X}{c}$  A

a=0 - Dim.A = 3.20

1 - Dim.A = 3.70

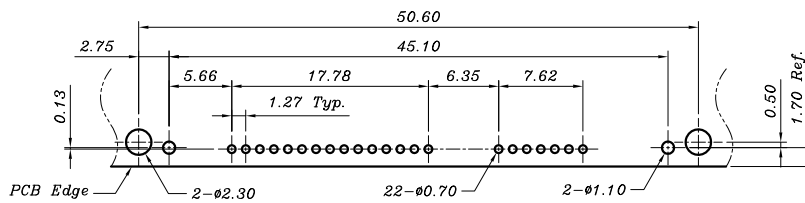
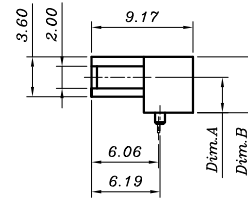
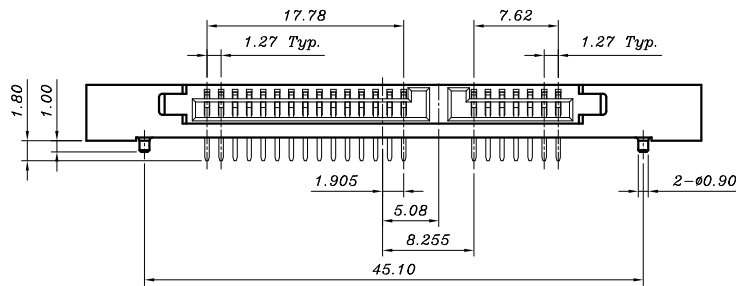
b=Packing Option

c=Plating Option



Dimension Information :

P/N:	Dim.A	Dim.B
TBF0-0130A-20XXA	3.20	5.05
TBF0-0130A-21XXA	3.70	5.45



Recommended P.C.B. Layout  
Layout Tolerance = ± 0.05 mm

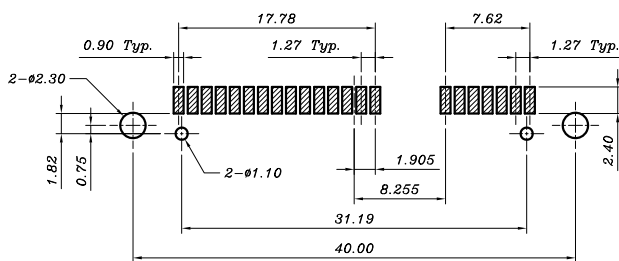
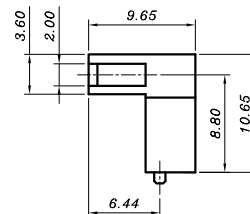
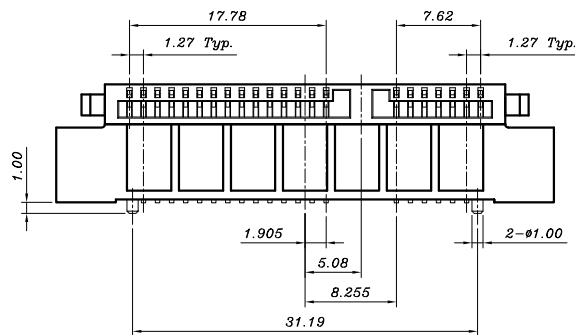
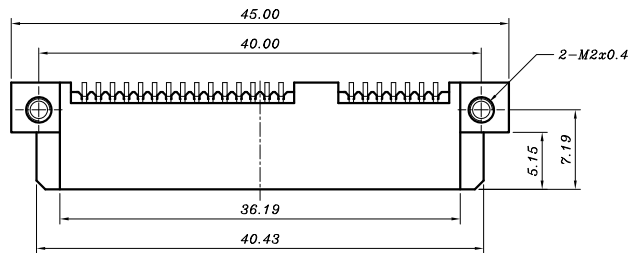
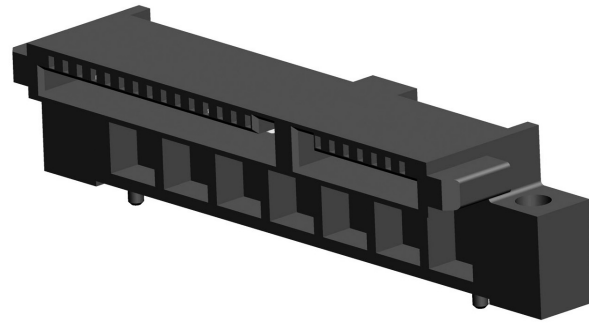
# SATA

## ORDER INFORMATION

TBF0-0130B - 20  $\frac{X}{a} \frac{X}{b} A$

$a$ =Packing Option

$b$ =Plating Option



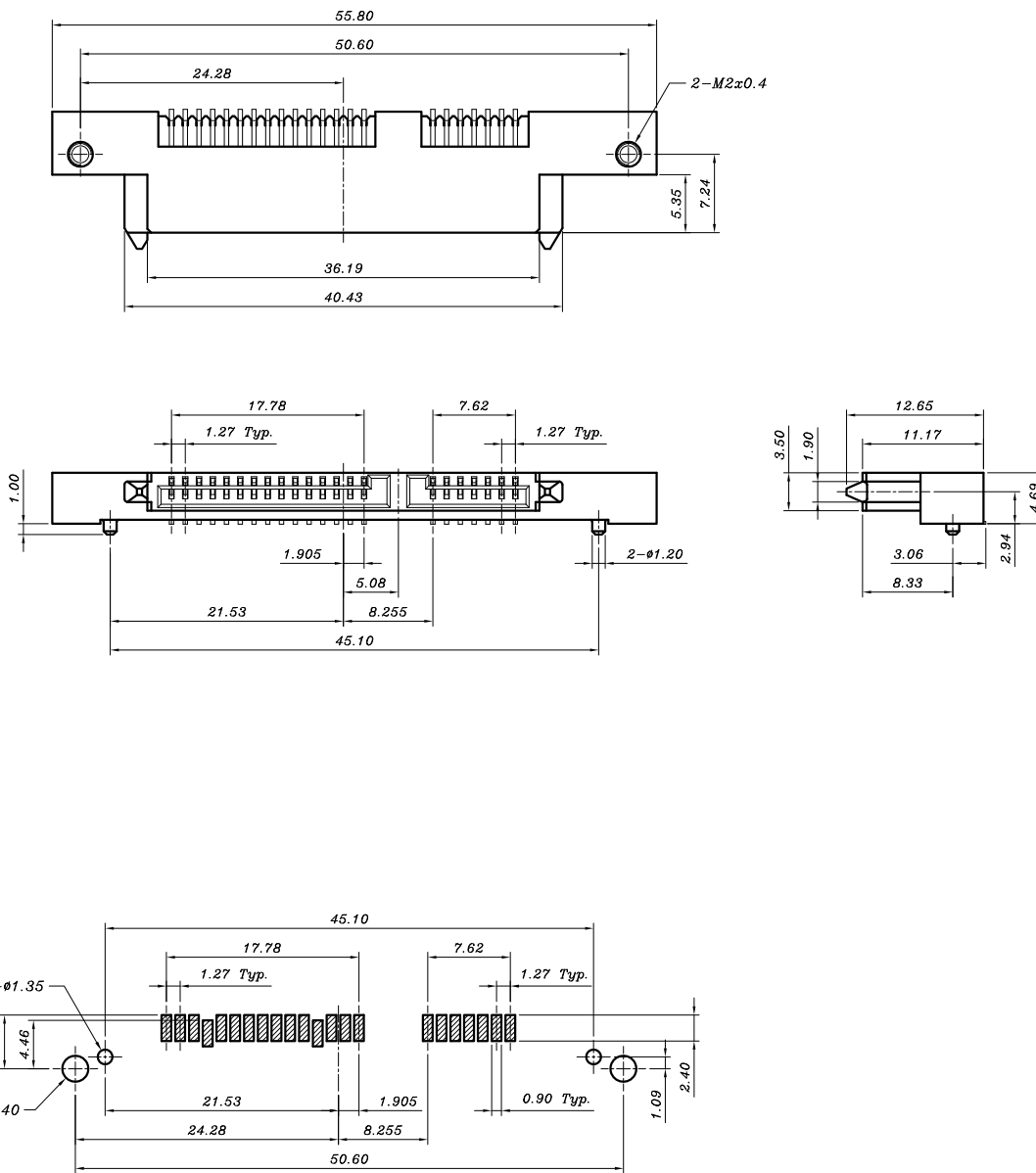
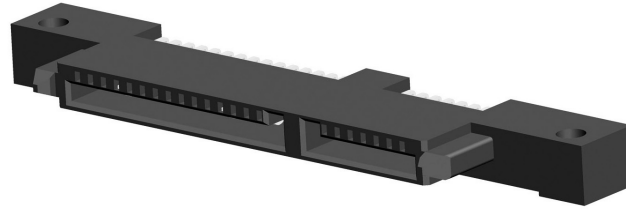
Recommended P.C.B. Layout  
Layout Tolerance = ± 0.05 mm

# SATA

## ORDER INFORMATION

TBF0-0130C - 20  $\frac{X}{a} \frac{X}{b} A$

a=Packing Option  
b=Plating Option



Recommended P.C.B. Layout  
Layout Tolerance = ± 0.05 mm

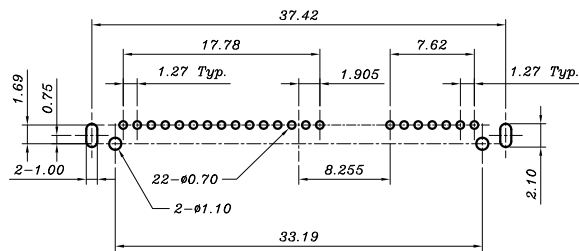
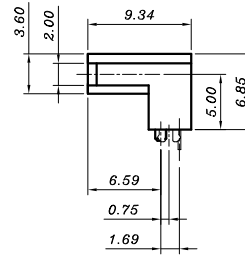
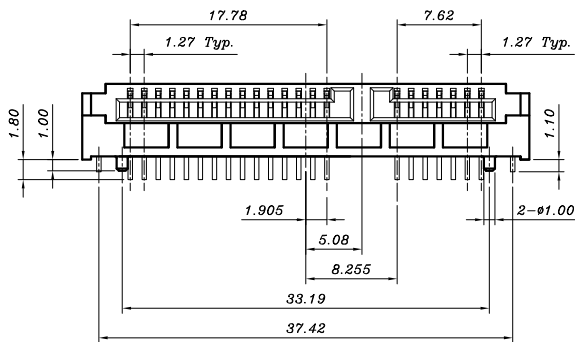
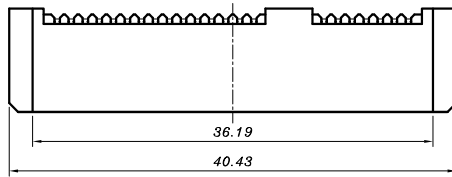
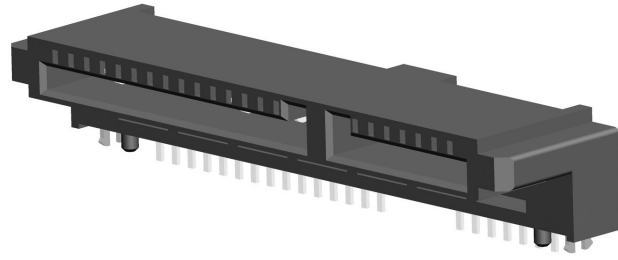
# SATA

## ORDER INFORMATION

TBF0-0130D - 20  $\frac{X}{a} \frac{X}{b} A$

$a$ =Packing Option

$b$ =Plating Option



Recommended P.C.B. Layout  
Layout Tolerance =  $\pm 0.05$  mm

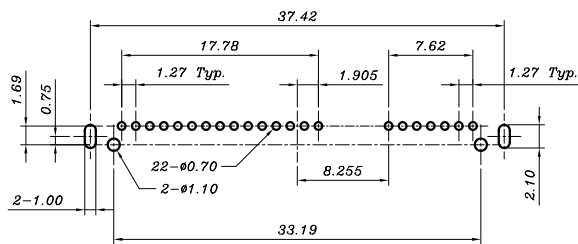
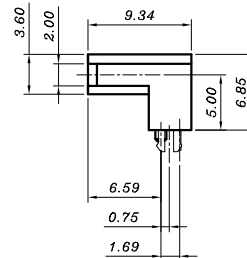
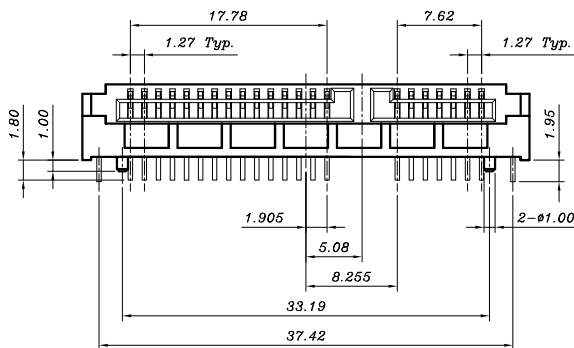
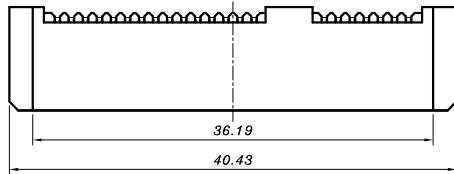
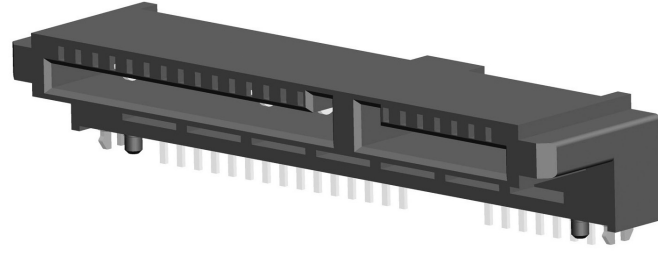
# SATA

## ORDER INFORMATION

TBF0-0130D - 21  $\frac{X}{a} \frac{X}{b} A$

a=Packing Option

b=Plating Option



Recommended P.C.B. Layout  
Layout Tolerance = ± 0.05 mm

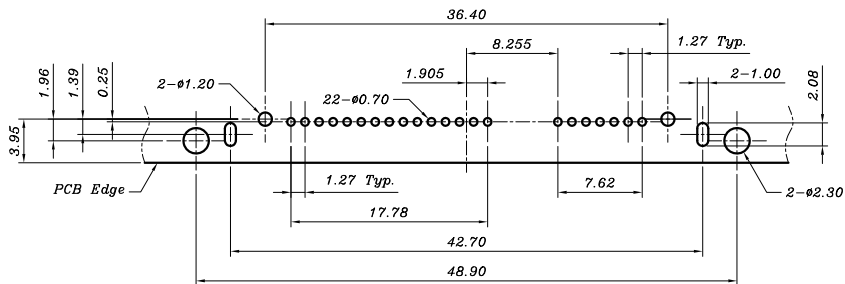
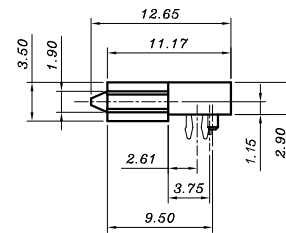
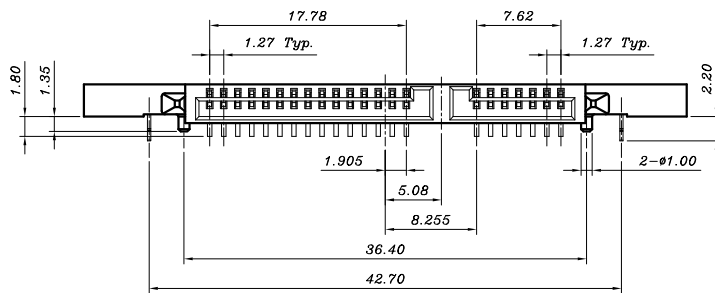
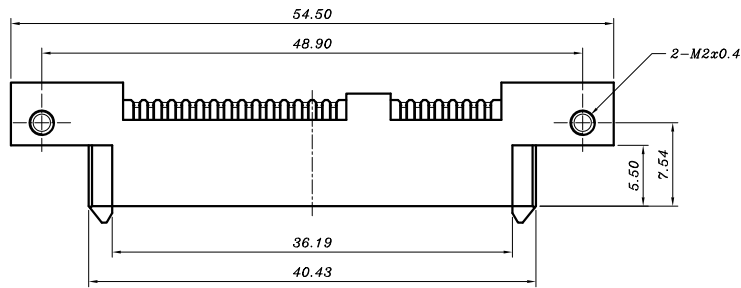
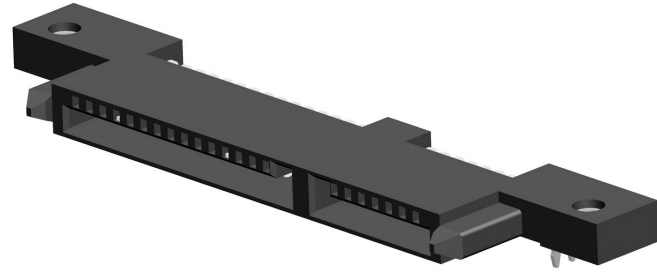
# SATA

## ORDER INFORMATION

TBF0-0130E - 20  $\frac{X}{a} \frac{X}{b} A$

$a$ =Packing Option

$b$ =Plating Option



Recommended P.C.B. Layout  
Layout Tolerance =  $\pm 0.05$  mm

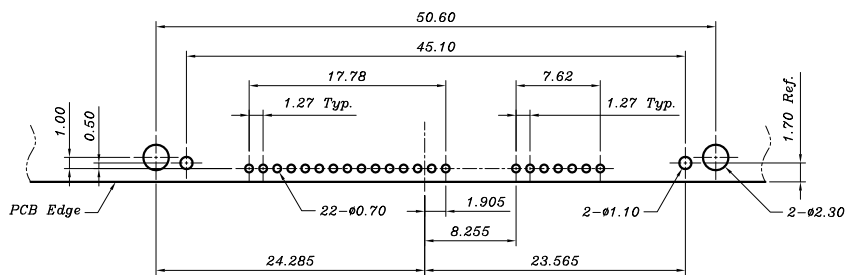
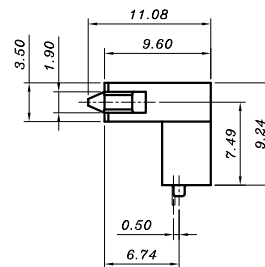
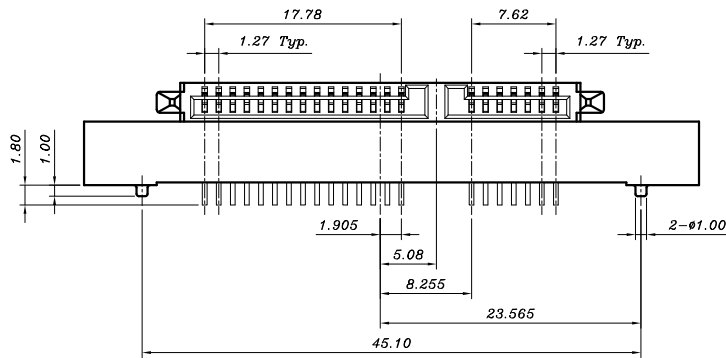
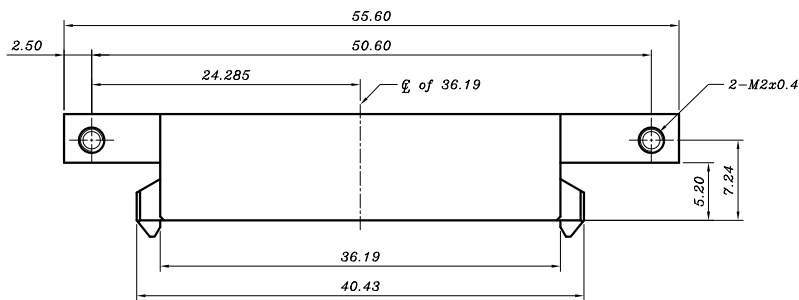
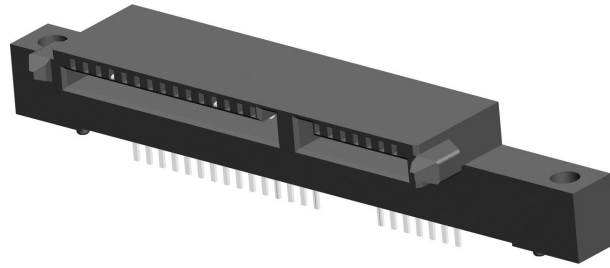
# SATA

## ORDER INFORMATION

TBF0-0130F - 20  $\frac{X}{a} \frac{X}{b} A$

a=Packing Option

b=Plating Option



Recommended P.C.B. Layout  
Layout Tolerance =  $\pm 0.05$  mm

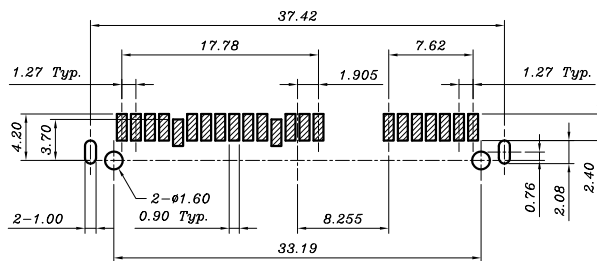
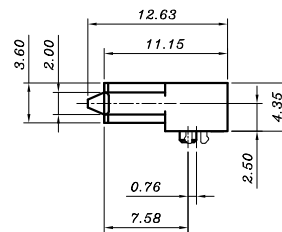
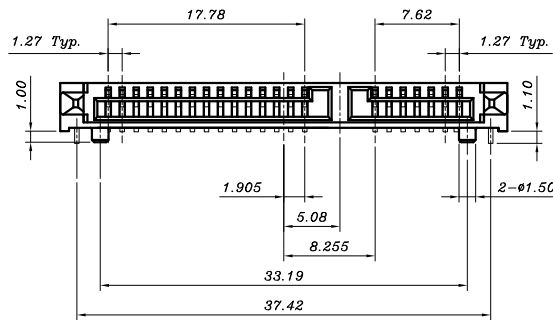
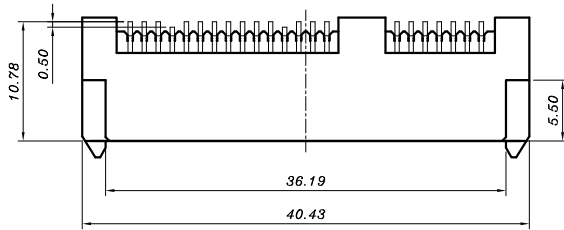
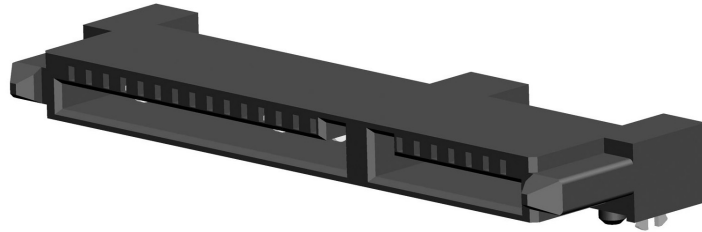
# SATA

## ORDER INFORMATION

TBF0-0130G - 20  $\frac{X}{a} \frac{X}{b} A$

$a$ =Packing Option

$b$ =Plating Option



Recommended P.C.B. Layout  
Layout Tolerance = ± 0.05 mm

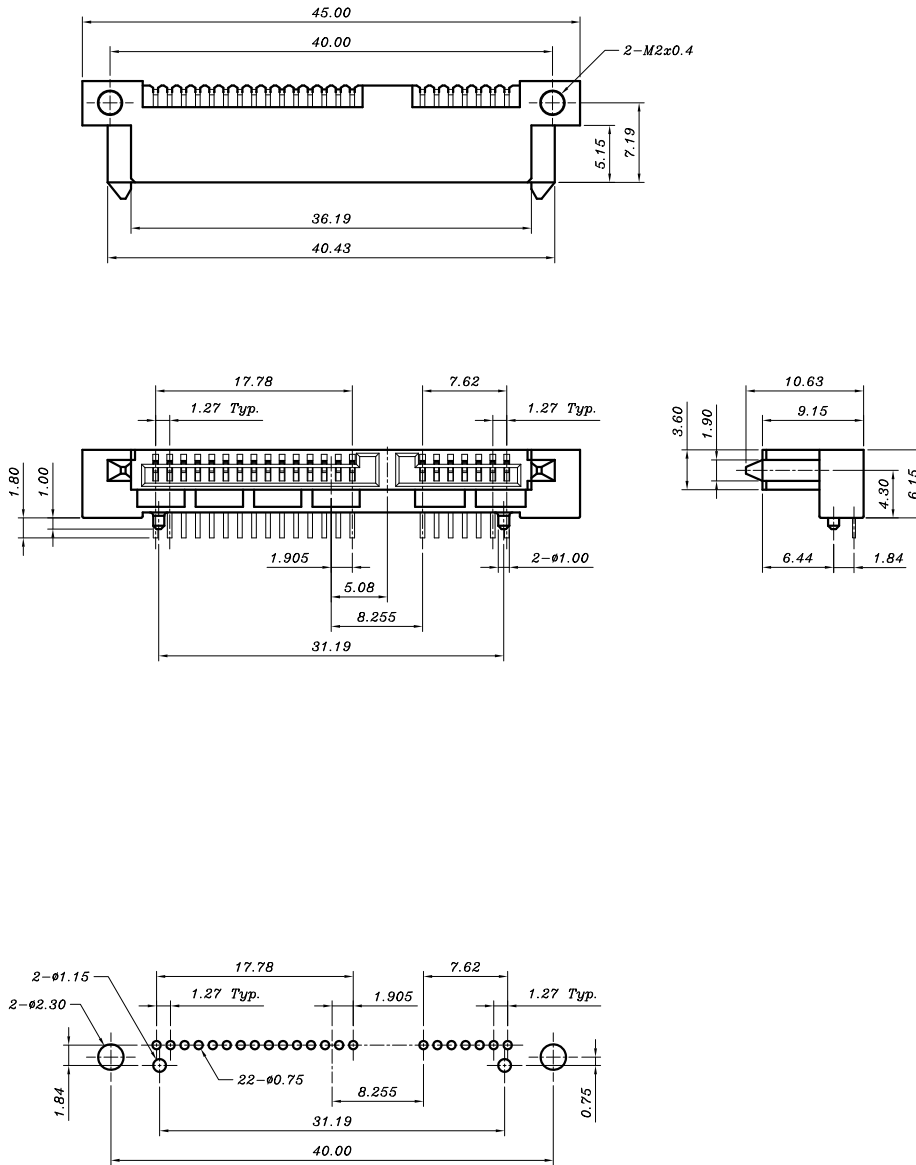
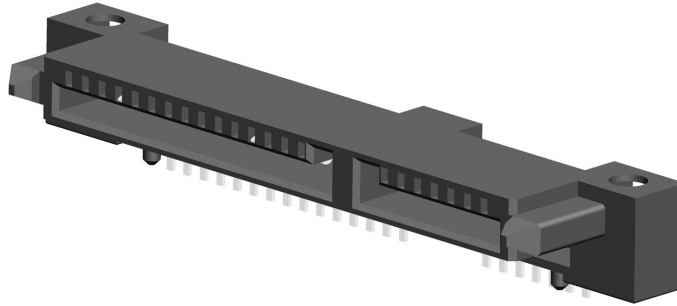
# SATA

## ORDER INFORMATION

TBF0-0130H - 20  $\frac{X}{a} \frac{X}{b} A$

a=Packing Option

b=Plating Option



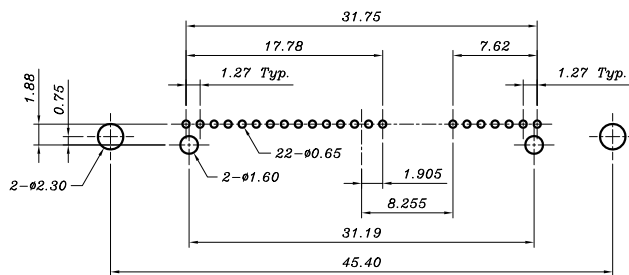
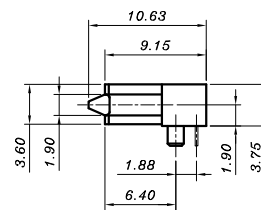
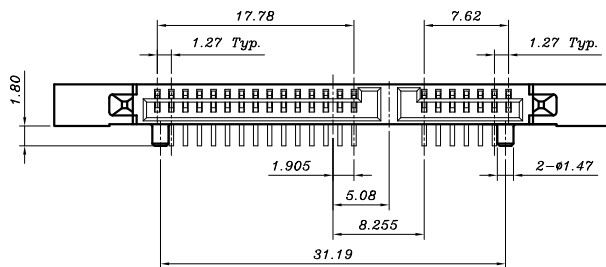
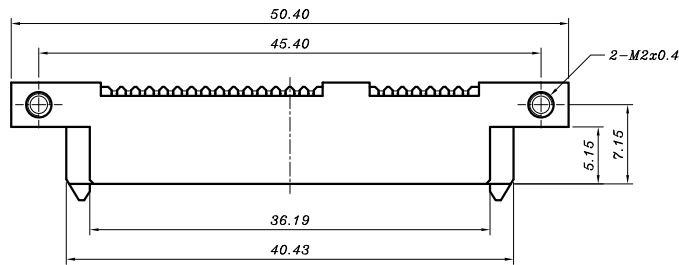
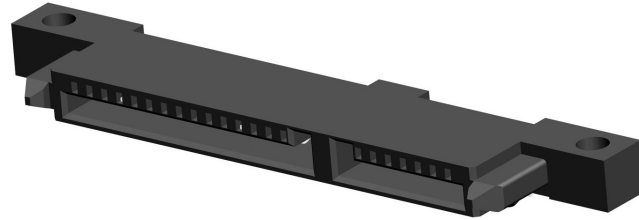
Recommended P.C.B. Layout  
Layout Tolerance = ± 0.05 mm

# SATA

## ORDER INFORMATION

TBF0-0130J - 20  $\frac{X}{a} \frac{X}{b} A$

$a$ =Packing Option  
 $b$ =Plating Option



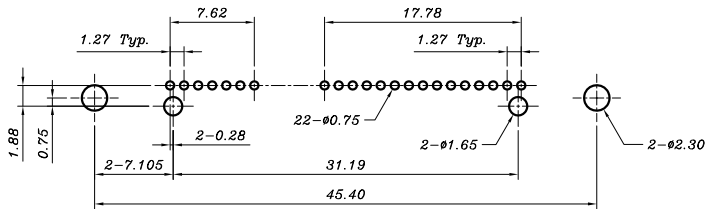
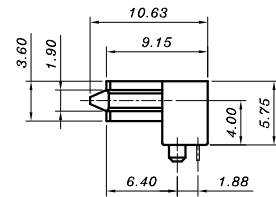
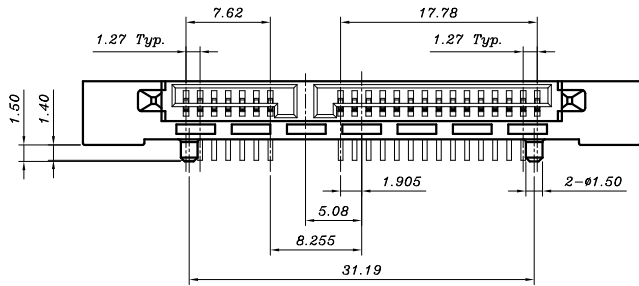
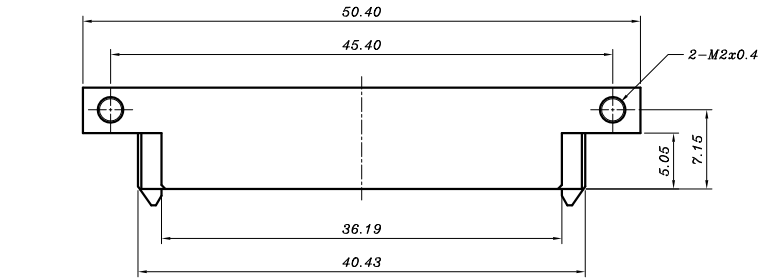
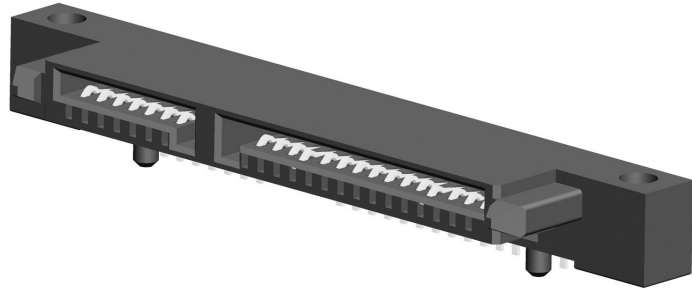
Recommended P.C.B. Layout  
 Layout Tolerance =  $\pm 0.05$  mm

# SATA

## ORDER INFORMATION

TBF0-01401 - 20  $\frac{X}{a} \frac{X}{b} A$

$a$ =Packing Option  
 $b$ =Plating Option



Recommended P.C.B. Layout  
 Layout Tolerance = ± 0.05 mm

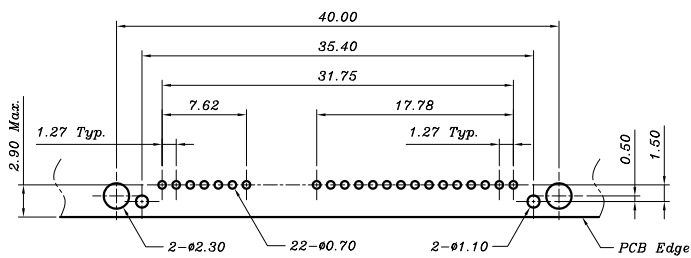
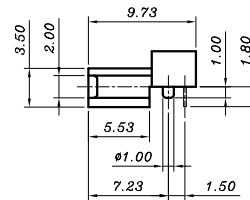
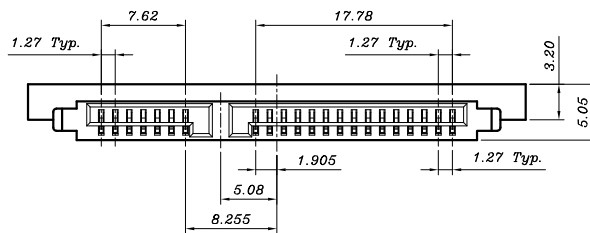
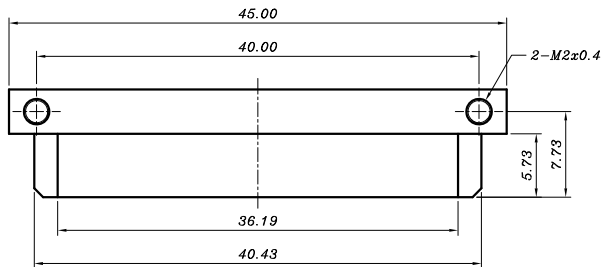
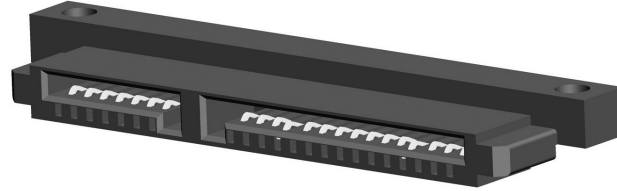
# SATA

## ORDER INFORMATION

TBFO-01402 - 21  $\frac{X}{a} \frac{X}{b} A$

$a$ =Packing Option

$b$ =Plating Option



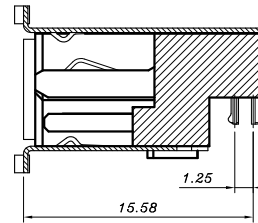
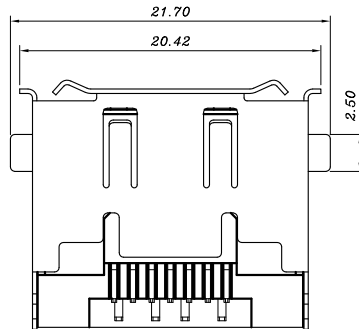
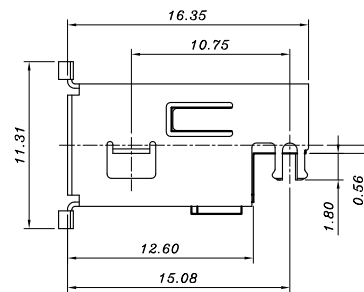
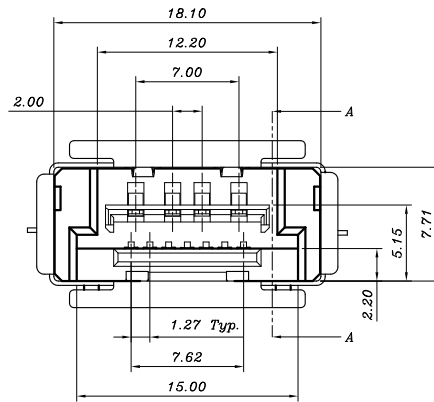
Recommended P.C.B. Layout  
Layout Tolerance =  $\pm 0.05$  mm

# eSATA+USB

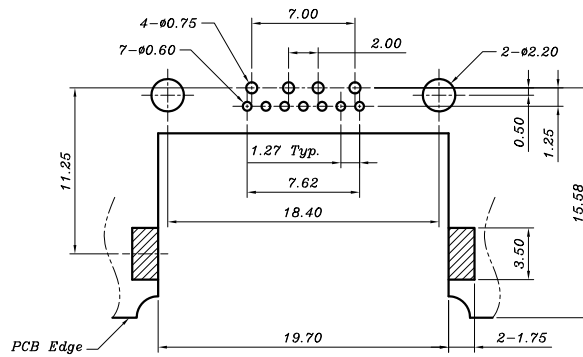
## ORDER INFORMATION

TBN0-03101 - 00  $\frac{X}{a} \frac{X}{b}$

$\alpha$ =Packing Option  
 $b$ =Plating Option



Section A-A



Recommended P.C.B. Layout  
 Layout Tolerance =  $\pm 0.05$  mm





**B.C.E. s.r.l.**  
Via Regina Pacis, 54/c - 41049 SASSUOLO (MO) Italy  
Tel. +39 0536 811.616 r.a. - Fax +39 0536 811.500  
[www.bce.it](http://www.bce.it) - E-mail: [bce@bce.it](mailto:bce@bce.it)

