

## HS-Lok Connector



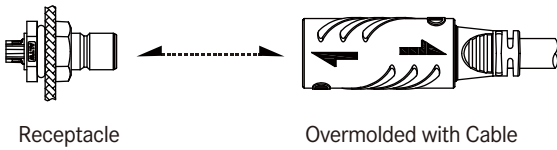
CATALOGUE

# HS-Lok Connector



## Range Overview

### ∟ Receptacle to Overmolded with Cable



Receptacle

Overmolded with Cable

### ∟ In Line



Overmolded with Cable

Overmolded with Cable

# Specification

<b>Identifications</b>	Q8 Size
<b>Mating Style</b>	Push Lock
<b>Description</b>	Receptacle Overmolded with Cable
<b>Current Rating / Data</b>	2A, 5A, 5A+2A
<b>Voltage Rating / Data</b>	2A: 100Vdc 5A: 300Vac/Vdc 5A+2A: 5A, 300Vac; 2A, 100Vdc
<b>Material</b>	Connector Body (Housing): Thermoplastic, UL Recognized Contacts: Copper Alloy, Gold Plated Gasket & O-ring: Rubber, UL Recognized
<b>Waterproof Rating</b>	IP68 (mated, 1m water/24 hours)
<b>Temperature Range</b>	Receptacle: -40°C~105°C Overmolded with Cable: -40°C~105°C
<b>Contact Resistance</b>	10 mΩ Max.
<b>Insulation Resistance</b>	100 MΩ Min. at 500Vdc
<b>Durability</b>	2,000 cycles
<b>Dielectric Withstand Voltage</b>	1,000V plus 2 times the rated voltage / 1 minute
<b>More to know</b>	<ul style="list-style-type: none"> <li>- Salt spray corrosion: 500 hours</li> <li>- Standard cable length: 01~99M</li> <li>- Torque (Nut For Receptacle): 6~8 kgf-cm</li> <li>- Tensile strength: 10 kgf</li> </ul>

【Note】 Design and specification are subject to change without notice.

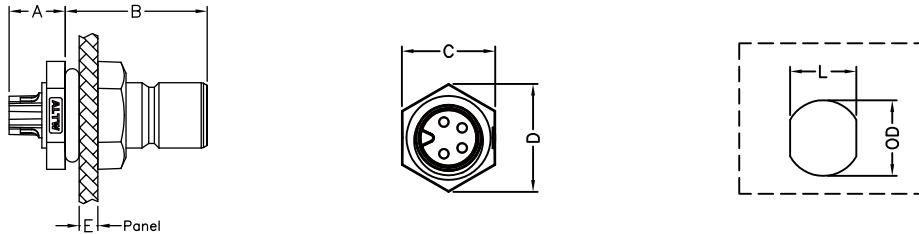
# Ordering Information

	1	2	3	4	5	6	7	8	9	10
<b>Specification / Current Rating</b>										
> <b>Q8 Size</b>										
(8U) 2A										
(8D) 5A										
(8DU) 5A+2A										
<b>Number of Contacts</b>										
02, 03, 04, 05, 06										
e.g. (02) = 2 Contacts										
<b>Connector Body (Style)</b>										
> <b>For Receptacle</b>										
(P) Panel										
> <b>For Overmolded with Cable</b>										
(A) With Strain Relief										
<b>Connector (Housing) Gender</b>										
(M) Male Connector										
(F) Female Connector										
<b>Contact Gender</b>										
(M) Male										
(F) Female										
<b>Assemble Style</b>										
> <b>For Receptacle</b>										
(S) Solder Type										
> <b>For Overmolded with Cable</b>										
(M) Overmolded with Cable										
<b>Mating Style</b>										
(Q) Push Lock										
<b>Backshell</b>										
> <b>For Receptacle</b>										
(F) Front Hexagonal										
> <b>For Overmolded with Cable</b>										
(L) Straight										
<b>Waterproof Rating</b>										
(8) IP 68										
<b>More Information</b>										
> <b>For Receptacle</b>										
(001), (002) .....										
Without Cable :										
Different Versions										
> <b>For Overmolded with Cable</b>										
(□)+(■) : Cable Type + Cable Length										
e.g. (A01) = UL21996 Cable + 1M										
(□) : Cable Type										
(A) UL 21996, Balck, round cable										
(■) : Cable Length										
From 1M to 99M										
e.g. (01) = 1M										

# Physical Dimension

## Receptacle

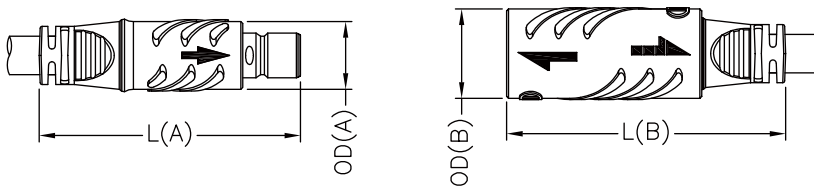
Front Fastened



Size	Current Rating (Code)	Contacts	A	B	C	D	E	L	OD
Q8	2A (U)	05	6.0	15.2	10.0	11.5	0.8~2.0	7.1	8.1
		06	8.8						
	5A (D)	02,03,04	6.0						
	5A+2A (DU)	02+03	6.0						

Unit: mm

## Overmolded with Cable



Size	Current Rating (Code)	L		OD	
		Male (A)	Female (B)	Male (A)	Female (B)
Q8	2A (U)	41.0	43.8	10.6	14.0
	5A (D)				
	5A+2A (DU)				

Unit: mm

【Note】 Design and specification are subject to change without notice.

# Contact Configuration

5A (Q8D)	5A (Q8D)	5A (Q8D)	2A (Q8D)	2A (Q8D)	5A+2A (Q8DU)
2 Pin (02)	3 Pin (03)	4 Pin (04)	5 Pin (05)	6 Pin (06)	2+3 Pin (05)
Male Connector, Male Contact					
R   C	R   C	R   C	R   C	R   C	R   C
Female Connector, Female Contact					
C	C	C	C	C	C
Wire Color Identification for Overmolded with Cable Style					
1 = White 2 = Black	1 = White 2 = Black 3 = Green	1 = White 2 = Black 3 = Red 4 = Blue	1 = White 2 = Black 3 = Red 4 = Blue 5 = Green	1 = White 2 = Black 3 = Red 4 = Blue 5 = Green 6 = Brown	1 = White 2 = Black 3 = Red 4 = Blue 5 = Green 6 = Brown

**R:** Receptacle  
**C:** Overmolded with cable  
**F:** Field installable

---

**Contact Number:** 2  
 e.g. 2 contacts (02)

---

**Connector (Housing) Gender:** 4  
 Male(M) or Female(F)

---

**Connector Gender:** 5  
 Male(M) or Female(F)

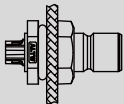

**More to Choose:** 6

- Solder (S)  
 - Solder Cup





## Find Our Standard Products

### Q8 Size > Receptacle and Mating Pair

<ul style="list-style-type: none"> <li>• Male Connector (Housing)</li> <li>• Male Contacts</li> <li>• Push Lock</li> </ul>		Field Installable .....>>>	Overmolded with Cable
			
Current Rating (Code)	Contacts ②	Male Connector (M) Male Contacts (M)	Female Connector (F) Female Contacts (F)
2A (U)	05, 06	Q8U-② PMMS-QF8001	Q8U-② AFFM-QL8A <del>XX</del> *
5A (D)	02, 03, 04	Q8D-② PMMS-QF8001	Q8D-② AFFM-QL8A <del>XX</del> *
5A+2A (DU)	02+03	Q8DU-② PMMS-QF8001	Q8DU-② AFFM-QL8A <del>XX</del> *

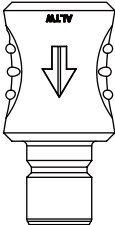
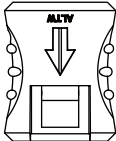
\* XX: Choose the cable length from 01~99m

### Q8 Size > In-Line

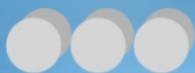
<ul style="list-style-type: none"> <li>• Female Connector (Housing)</li> <li>• Female Contacts</li> <li>• Push Lock</li> </ul>		Overmolded with Cable .....>>>	Overmolded with Cable
			
Current Rating (Code)	Contacts ②	Male Connector (M) Male Contacts (M)	Female Connector (F) Female Contacts (F)
2A (U)	05, 06	Q8U-② AMMM-QL8A <del>XX</del> *	Q8U-② AFFM-QL8A <del>XX</del> *
5A (D)	02, 03, 04	Q8D-② AMMM-QL8A <del>XX</del> *	Q8D-② AFFM-QL8A <del>XX</del> *
5A+2A (DU)	02+03	Q8DU-② AMMM-QL8A <del>XX</del> *	Q8DU-② AFFM-QL8A <del>XX</del> *

\* XX: Choose the cable length from 01~99m

### Accessories > Waterproof Cap

		For female connector	For male connector	
				
Size	Mating Style	Mating Pair (Gender)		P/N
Q8 Series	Push Lock	Male		CAP-WBBMQMA1
		Female		CAP-WBBFQCA1

[Note] Design and specification are subject to change without notice.



**B.C.E. S.r.l.** - Via Regina Pacis, 54/c - I 41049 Sassuolo (MO), Italy

Tel: (+39) 0536 811616 Fax: (+39) 0536 811500 E-mail: [bce@bce.it](mailto:bce@bce.it) Web: [www.bce.it](http://www.bce.it)

