

**SSL Connector**



**CATALOGUE**

# SSL Connector

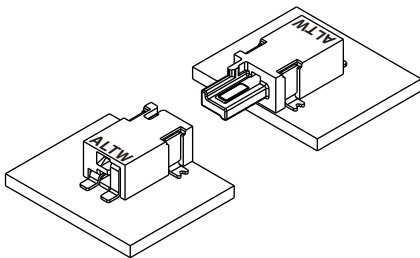


## Range Overview

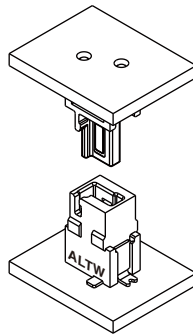
### SSL 1.1

#### Board to Board

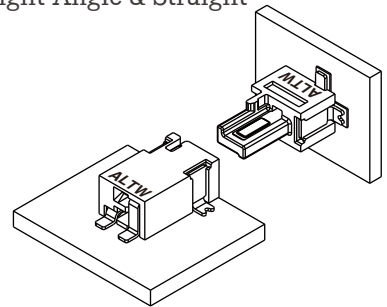
Right Angle



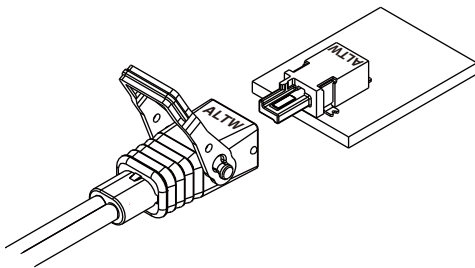
Straight



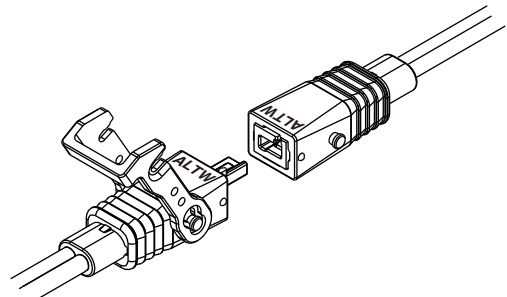
Right Angle & Straight



#### Board to Wire

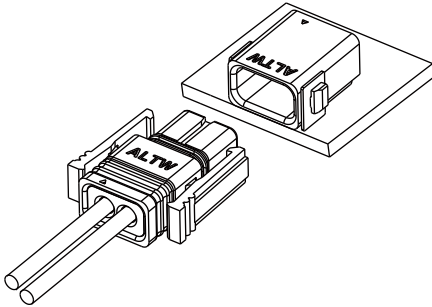


#### Wire to Wire

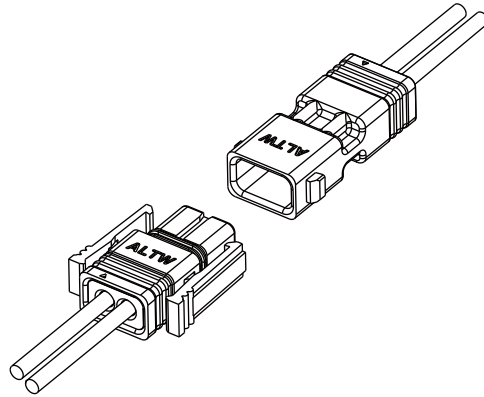


### SSL 1.2 (IP 68)

└ Wire to Board

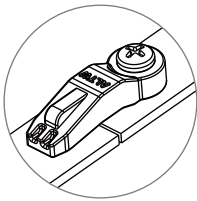


└ Wire to Wire



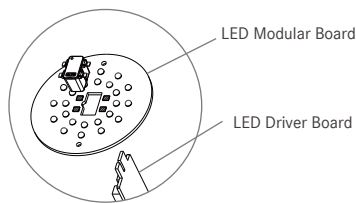
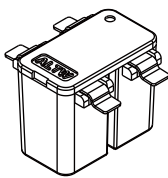
### SSL 1.3 The Bridge

└ Jumper



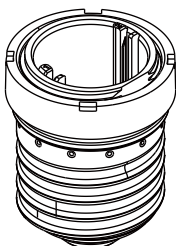
### SSL 2.1 Inverted Thru Board

└ Receptacle



### SSL 2.3 EZ-B for E26/27 Bulb

└ Screw Base



【Note】 Design and specification are subject to change without notice.

## Specification | SSL 1.1

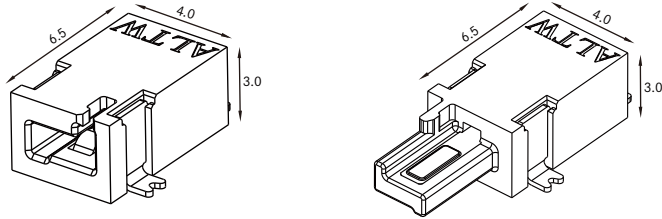
<b>Identifications</b>	SSL 1.1 DC Connector
<b>Description</b>	Board to Board Board to Wire Wire to Wire
<b>Current Rating / Data</b>	3A per pin (2, 4 & 6 pins available)
<b>Voltage Rating</b>	Max100 VAC / VDC
<b>Material</b>	Contact: Copper Alloy, Copper Alloy, Gold over Nickel Plated Housing: Thermoplastic, UL 94V-0 Rated Hood: Thermoplastic, UL 94V-0 Rated Lock: Nylon (PA66), UL 94V-0 Rated SR: PP, UL 94V-0 Rated UL recognized wire & flat cable available
<b>Temperature Range</b>	PCB Mount: -40°C ~ 105°C Wire Assemblies: -40°C ~ 100°C
<b>Contact Resistance</b>	≤ 20m Ω
<b>Insulation Resistance</b>	≥ 1000MΩ at 250Vdc
<b>Durability</b>	100 cycles
<b>Breakdown Voltage</b>	1200 Vac
<b>More to know</b>	UL1977 / cUL / CSA C22.2



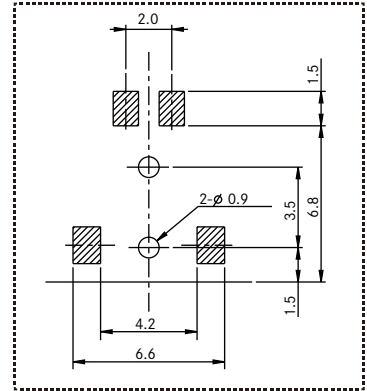
# Physical Dimension | SSL 1.1

## ▾ PCB Mount > Right Angle

>> 2P

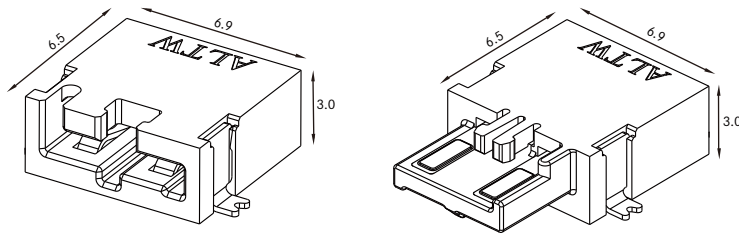


Recommended PCB Layout

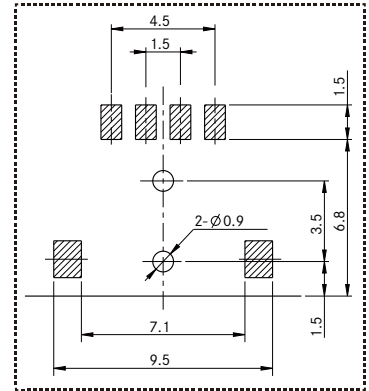


Unit: mm

>> 4P

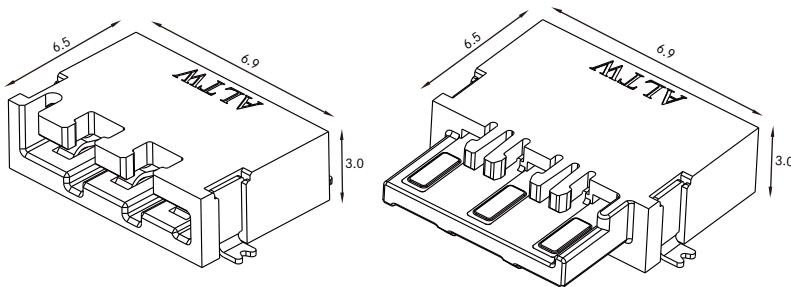


Recommended PCB Layout

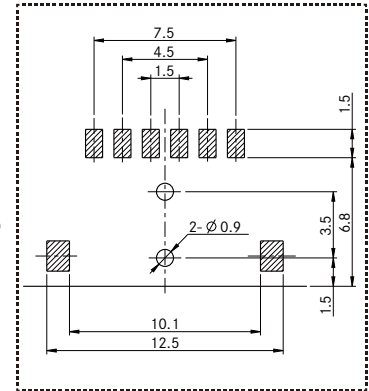


Unit: mm

>> 6P



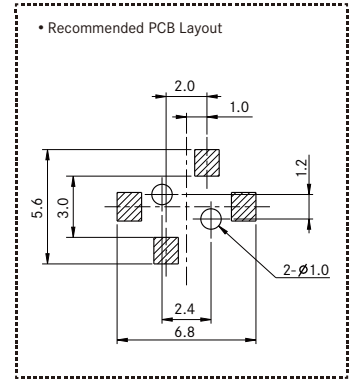
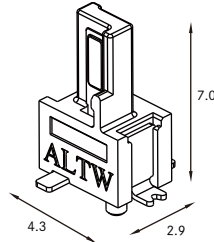
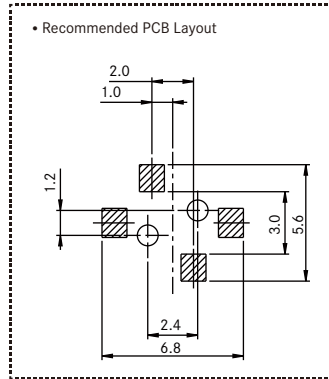
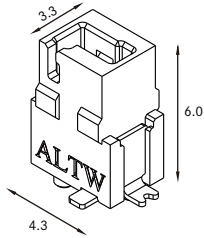
Recommended PCB Layout



Unit: mm

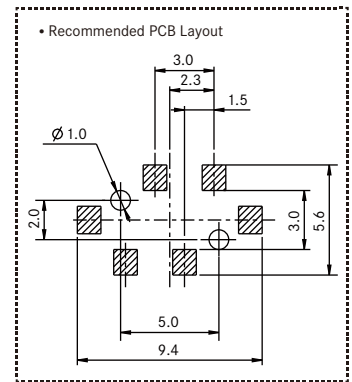
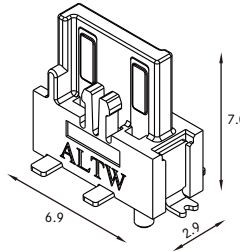
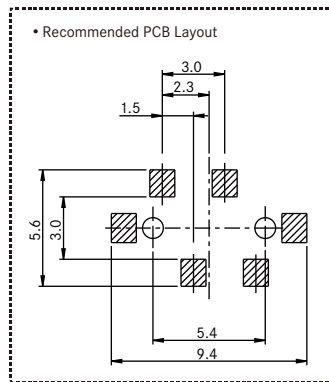
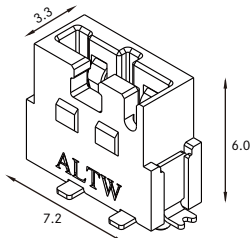
▾ PCB Mount > Straight

>> 2P



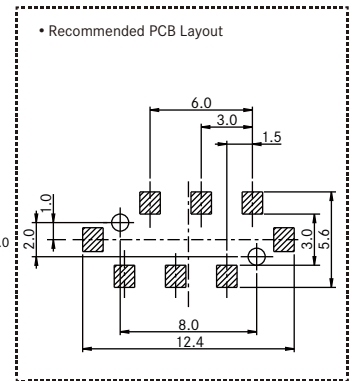
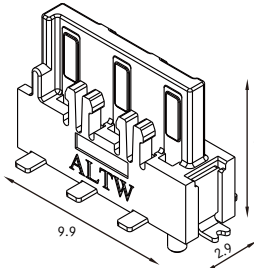
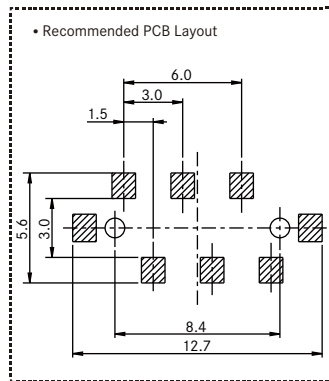
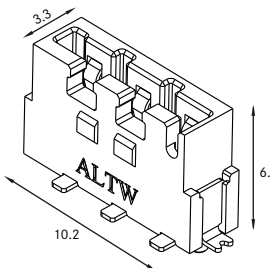
Unit: mm

>> 4P



Unit: mm

>> 6P

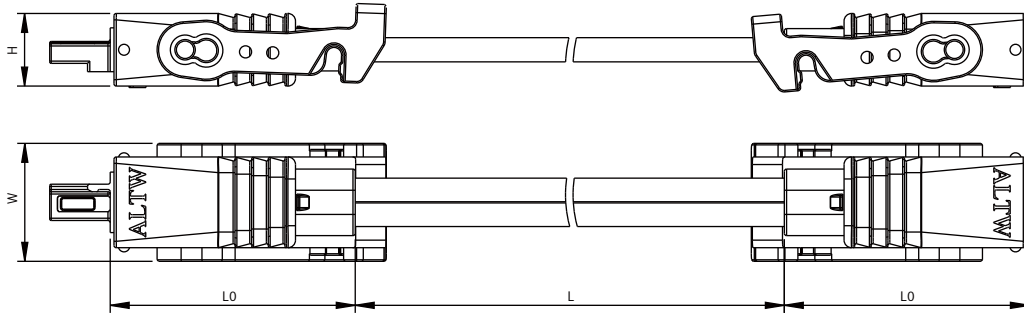


Unit: mm

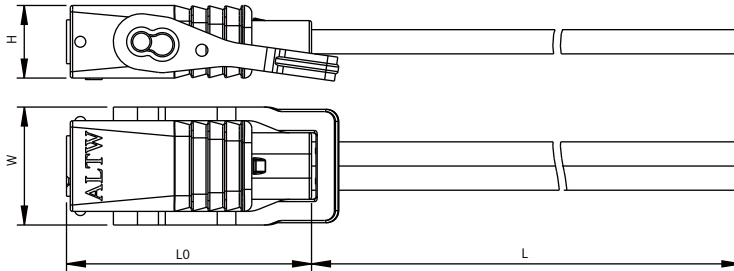
【Note】 Design and specification are subject to change without notice.

## Wire Assembly

>> Flat Cable



>> Wire

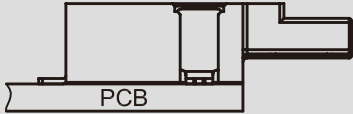
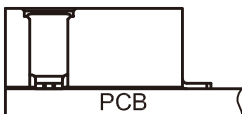


	L0	H	W	Cable Length (L)
2P	18.2	4.8	7.8	Various cable length available upon request
4P	18.2	4.8	11.2	
6P	18.2	4.8	14.2	

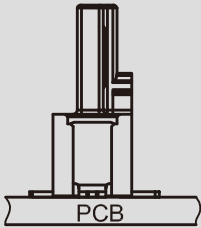
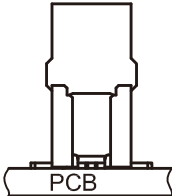
Unit: mm

## Find Our Standard Products | SSL 1.1

### Board to Board > Right Angle

		
	④ PCB Mount (Right Angle) ; With post (C) or without post (D)	④ PCB Mount (Right Angle) ; With post (C) or without post (D)
	Plug	Jack
<b>2P</b>	SSL11-P 2 ④ 00-000001	SSL11-J 2 ④ 00-000001
<b>4P</b>	SSL11-P 4 ④ 00-000001	SSL11-J 4 ④ 00-000001
<b>6P</b>	SSL11-P 6 ④ 00-000001	SSL11-J 6 ④ 00-000001

### Board to Board > Straight

		
	Plug	Jack
<b>2P</b>	SSL11-P2A00-000001	SSL11-J2A00-000001
<b>4P</b>	SSL11-P4A00-000001	SSL11-J4A00-000001
<b>6P</b>	SSL11-P6A00-000001	SSL11-J6A00-000001

【Note】 Design and specification are subject to change without notice.

### Board to Board > Right Angle & Straight

	Plug	Jack
<b>2P</b>	SSL11-P 2 <b>4</b> 00-000001	SSL11-J 2 <b>4</b> 00-000001
<b>4P</b>	SSL11-P 4 <b>4</b> 00-000001	SSL11-J 4 <b>4</b> 00-000001
<b>6P</b>	SSL11-P 6 <b>4</b> 00-000001	SSL11-J 6 <b>4</b> 00-000001

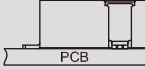

### Board to Wire

<b>4</b> PCB Mount (Right Angle) ; With post (C) or without post (D)					
Mount Type		End 1 + End 2	Cable Type	Part Number	
<b>2P</b>	Right Angle Plug	SSL11-P2 <b>4</b> 00-000001	Jack + Open End	Wire	SSL11-J2LJ0-B22A <b>XX</b> *
<b>4P</b>		SSL11-P4 <b>4</b> 00-000001			SSL11-J4LJ0-B22A <b>XX</b> *
<b>6P</b>		SSL11-P6 <b>4</b> 00-000001			SSL11-J6LJ0-B22A <b>XX</b> *

\***XX**: Please choose the cable length from 100mm ~ 9900mm  
e.g. (01) = 100mm, (02) = 200mm, (03) = 300mm .....


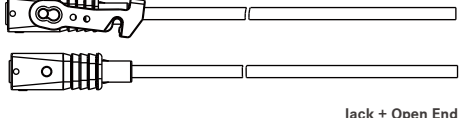
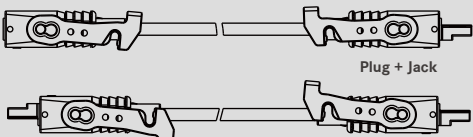
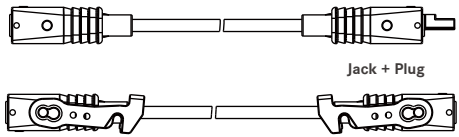
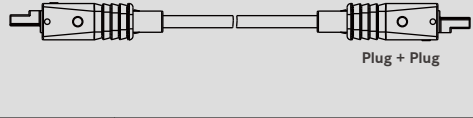
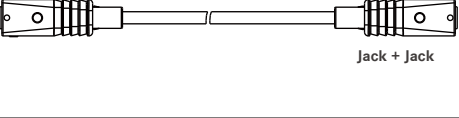
\*Every 100mm as per extension

### Board to Wire

		 <p>4 PCB Mount (Right Angle) ; With post (C) or without post (D)</p>			
Mount Type	Jack	End 1 + End 2	Cable Type	Part Number	
Right Angle Jack	2P	SSL11-J2 4 00-000001	Plug + Open End	Wire	SSL11-P2LP0-B22AXX*
	4P	SSL11-J4 4 00-000001			SSL11-P4LP0-B22AXX*
	6P	SSL11-J6 4 00-000001			SSL11-P6LP0-B22AXX*

\*XX: Please choose the cable length from 100mm ~ 9900mm  
e.g. (01) = 100mm, (02) = 200mm, (03) = 300mm .....  
\*Every 100mm as per extension

### Wire to Wire

		 <p>Plug + Open End</p>			 <p>Jack + Open End</p>		
		 <p>Plug + Jack</p>			 <p>Jack + Plug</p>		
		 <p>Plug + Plug</p>			 <p>Jack + Jack</p>		
Cable Type	Contacts 3	End 1 + End 2	Lock	Part Number	End 1 + End 2	Lock	Part Number
Wire	2, 4, 6	Plug + Open End	No Lock	SSL11-P 3 LP0-022AXX*	Jack + Open End	One Lock	SSL11-J 3 LJ0-022AXX*
			One Lock	SSL11-P 3 LP0-W22AXX*		No Lock	SSL11-J 3 LJ0-022AXX*
Flat Cable	2, 4, 6	Plug + Jack	Two Locks	SSL11-P 3 LJP-T22DXX*	Jack + Plug	No Lock	SSL11-P 3 LJP-022DXX*
			Two Locks	SSL11-P 3 L2P-T22DXX*		No Lock	SSL11-J 3 L2J-022DXX*
				No Lock			SSL11-P 3 L2P-022DXX*

[Note] Design and specification are subject to change without notice.

## Specification | SSL 1.2

<b>Identifications</b>	SSL 1.2 Connector, IP 68 Waterproof Rated
<b>Description</b>	Board to Wire Wire to Wire
<b>Current Rating / Data</b>	5A per pin (2 & 4 pins available; 6 pins upon request)
<b>Material</b>	Terminal: Copper Alloy, Gold over Nickel Plated Housing: Thermoplastic, UL94V-0 Rated Seal&Gasket: Silicone
<b>Waterproof Rating</b>	IP68, 1M depth of water in 24 hours
<b>Temperature Range</b>	-40°C ~ 105°C
<b>Contact Resistance</b>	≤ 20mΩ
<b>Insulation Resistance</b>	≥ 1000MΩ at 500Vdc
<b>Durability</b>	30 cycles
<b>Breakdown Voltage</b>	1500Vac
<b>More to know</b>	UL1977 / cUL / CSA C22.2

# Ordering Information | SSL 1.2

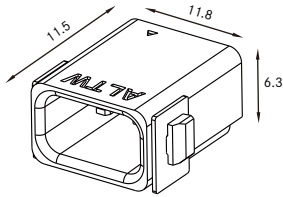
<b>Connector Series</b>		<b>1</b> — <b>2</b> <b>3</b> <b>4</b> <b>5</b> <b>6</b> <b>7</b> <b>8</b>
(12) SSL 1.2 IP 68 Waterproof Series		
<b>Connector (Housing) Gender</b>		
(J) Jack	(P) Plug	
<b>Number of Contacts</b>		
2, 4 contacts		
e.g. (2) = 2 Contacts		
<b>Connector Type</b>		
<u>&gt; For PCB Mount Type</u>		<u>&gt; For Cable</u>
(D) SMT Board Right Angle without Post	(L) Cable Assemblies, Straight	
	(F) Field Installable	
<b>Wires Assembly Options</b>		
<u>&gt; For PCB Mount Type</u>		<u>&gt; For Cable</u>
(00) Applicable for PCB Mount Type	(J0) End 1: Jack, End 2: Open	
	(P0) End 1: Plug, End 2: Open	
	(2J) 2-Ends Jack Connector (Upon Request)	
	(2P) 2-Ends Plug Connector (Upon Request)	
	(JP) End 1: Jack, End 2: Plug (Upon Request)	
<b>Latch Option</b>		
(0) None Latch		
(M) With Latch		
<b>Wire Size</b>		
<u>&gt; For PCB Mount Type</u>		<u>&gt; For Cable</u>
(00) Applicable for PCB Mount Type	(20) 20 AWG	
<b>Cable / Wires Type</b>		
<u>&gt; For PCB Mount Type</u>		<u>&gt; For Cable</u>
(001), (002).....	(□)+(■) : Wire Type + Wire Length	
Without Cable : Different Versions	e.g. (A01) = UL1430 Wire + 100mm	
	(□): Wire Type	(■): Length
(A) UL 1430 Wire	From 100mm~9900mm	
	EX. (01) = 100mm, (02) = 200mm, (03) = 300mm...	
	*Every 100mm as per extension	

[ Note ] Design and specification are subject to change without notice.

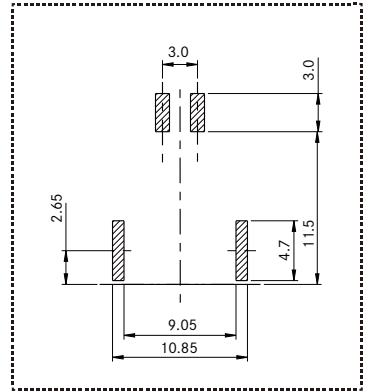
# Physical Dimension | SSL 1.2

## ▾ SMT Receptacle

>> 2P

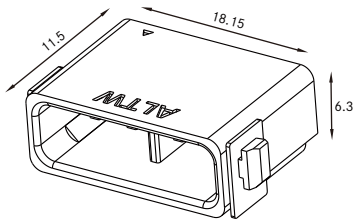


Recommended PCB Layout

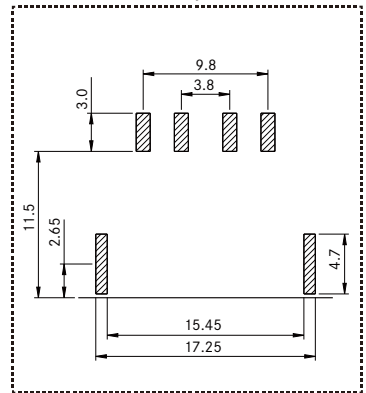


Unit: mm

>> 2P

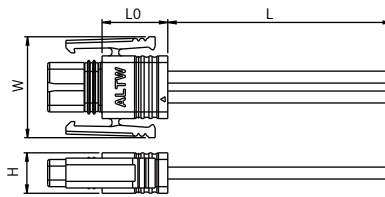
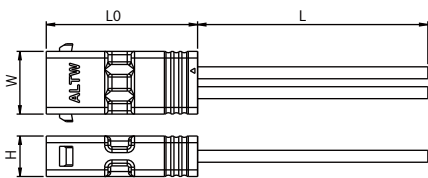


Recommended PCB Layout



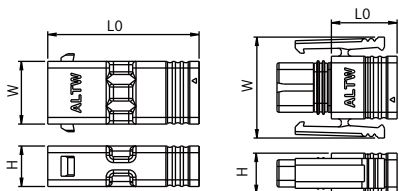
Unit: mm

## ▾ Cable Assemblies & Field Installable



\* Various cable length available upon request.

## ▾ Cable Assemblies & Field Installable

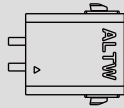
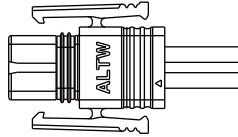
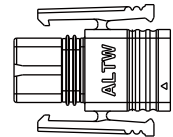
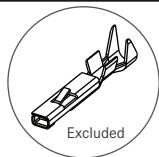


	Gender	L0	H	W
2P	Jack	22.8	6.1	11.8
	Plug	18.1	6.1	15.2
4P	Jack	22.8	6.1	18.15
	Plug	9.9	6.1	21.2

Unit: mm

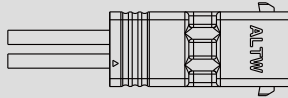

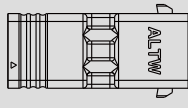
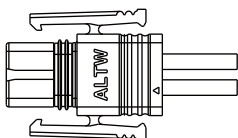
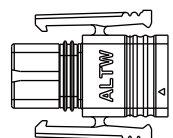
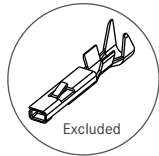
# Find Our Standard Products | SSL 1.2

## Board to Wire

		 <p>Cable Assemblies</p>	 <p>Field Installable</p>	 <p>Excluded BBA00010666</p>
		<p>Jack</p>		
<b>2P</b>	SSL 12-J2D00-00000 1	SSL 12-P2LP0-M20A <u>XX</u> *	SSL 12-P2FP0-M0000 1	
<b>4P</b>	SSL 12-J4D00-00000 1	SSL 12-P4LP0-M20A <u>XX</u> *	SSL 12-P4FP0-M0000 1	

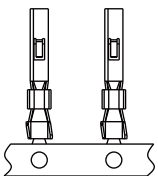
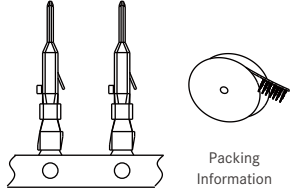
\*XX: Please choose the cable length from 100mm ~ 9900mm  
 e.g. (01) = 100mm, (02) = 200mm, (03) = 300mm .....  
 \*Every 100mm as per extension

## Wire to Wire

 <p>Cable Assemblies</p>  <p>Excluded BBA00010667</p>  <p>Field Installable</p>		 <p>Cable Assemblies</p>	 <p>Field Installable</p>	 <p>Excluded BBA00010666</p>
		<p>Jack</p>		
<b>2P</b>	SSL 12-J2LJ0-020A <u>XX</u> *	SSL 12-P2LP0-M20A <u>XX</u> *	SSL 12-P2FP0-M0000 1	
	SSL 12-J2FJ0-00000 1			
<b>4P</b>	SSL 12-J4LJ0-020A <u>XX</u> *	SSL 12-P4LP0-M20A <u>XX</u> *	SSL 12-P4FP0-M0000 1	
	SSL 12-J4FJ0-00000 1			

\*XX: Please choose the cable length from 100mm ~ 9900mm  
 e.g. (01) = 100mm, (02) = 200mm, (03) = 300mm .....  
 \*Every 100mm as per extension

## Accessories > Contacts

	 <p>Packing Information</p>	 <p>Packing Information</p>
Part Number	BBA00010666	BBA00010667

【Note】 Design and specification are subject to change without notice.

## Specification | SSL 1.3

<b>Identifications</b>	SSL1.3 The Bridge
<b>Description</b>	Board to Board Jumper
<b>Number of Position</b>	1P
<b>Current Rating / Data</b>	5A
<b>Voltage Rating</b>	500Vac/dc
<b>Material</b>	Terminal: Copper Alloy, Gold over Nickel Plated Housing: Thermoplastic, UL94V-0 Rated
<b>Temperature Range</b>	-40°C ~ 105°C
<b>Contact Resistance</b>	≤ 20mΩ
<b>Insulation Resistance</b>	≥ 1000MΩ at 500VDC
<b>Durability</b>	10 cycles
<b>Breakdown Voltage</b>	2000Vac

# Ordering Information | SSL 1.3

## Connector Series

(13) SSL 1.3 The Bridge Series

SSL1.3-D-1-S-00-0-00-001

## Connector (Housing) Gender

(D) no gender

## Number of Contacts

1 contacts

e.g. (1) = 1 Contacts

## Connector Type

> For PCB Mount Type

(S) Screw Mount Type

## Wires Assembly Options

> For PCB Mount Type

(00) Applicable for PCB Mount Type

## Assembly Option

(0) Applicable for PCB Mount Type

## Wire Size

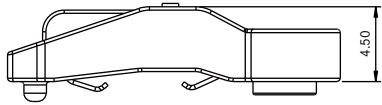
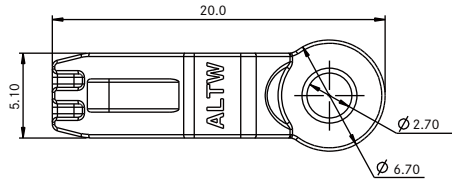
> For PCB Mount Type

(00) Applicable for PCB Mount Type

【Note】 Design and specification are subject to change without notice.

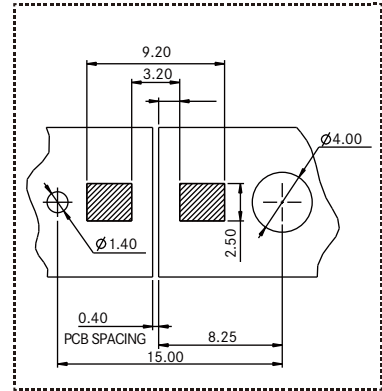
# Physical Dimension | SSL 1.3

## ▾ SMT Receptacle



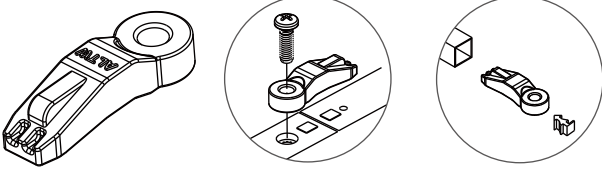
Unit: mm

• Recommended PCB Layout



## Find Our Standard Products | SSL 1.3

### ∨ SSL 1.3 The Bridge

	 <p>Packing Information</p>
Part Number	SSL13-D1S00-000001

【Note】 Design and specification are subject to change without notice.

## Specification | SSL 2.1

<b>Identifications</b>	SSL2.1 Inverted Thru Board
<b>Description</b>	Board to Board
<b>Number of Position</b>	2P
<b>Current Rating / Data</b>	12A
<b>Voltage Rating</b>	600Vac/dc
<b>Material</b>	Terminal: Copper Alloy, Gold over Nickel Plated Housing & Cover: Thermoplastic, UL94V-0 Rated
<b>Temperature Range</b>	-40°C ~ 105°C
<b>Contact Resistance</b>	≤ 20m Ω
<b>Insulation Resistance</b>	≥ 1000MΩ at 500VDC
<b>Durability</b>	20 cycles
<b>Breakdown Voltage</b>	2200Vac
<b>More to know</b>	UL1977 / cUL / CSA C22.2 / RoHS

# Ordering Information | SSL 2.1

## Connector Series

SSL2.1-J-2-E-00-0-00-001

(21) SSL 2.1 Inverted Thru Hole

## Connector (Housing) Gender

(J) Jack

## Number of Contacts

2 contacts

e.g. (2) = 2 Contacts

## Connector Type

> For PCB Mount Type

(E) SMT Inverted 180 degree type

## Wires Assembly Options

> For PCB Mount Type

(00) Applicable for PCB Mount Type

## Assembly Option

(0) Applicable for PCB Mount Type

## Wire Size

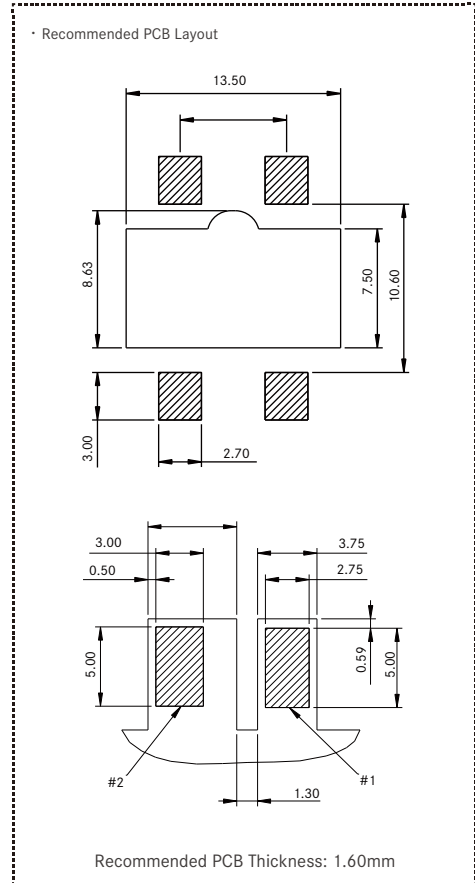
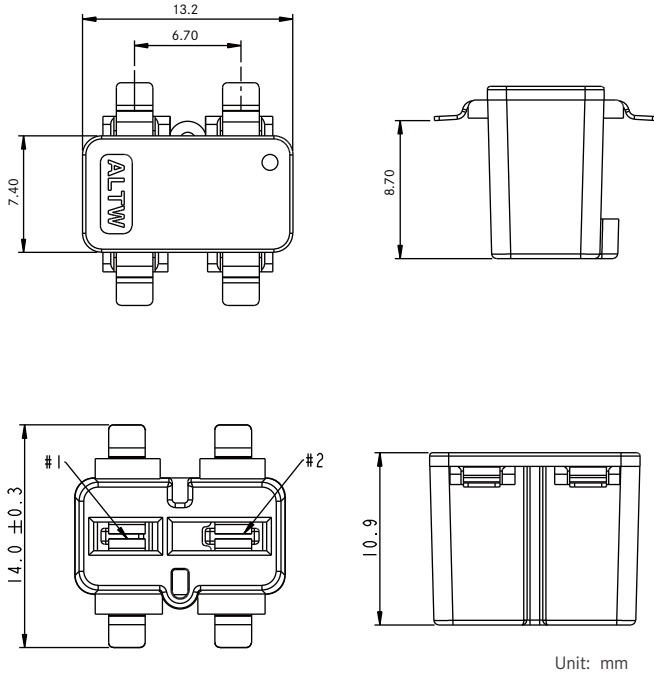
> For PCB Mount Type

(00) Applicable for PCB Mount Type

【Note】 Design and specification are subject to change without notice.

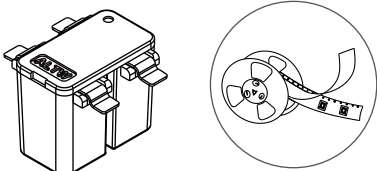
# Physical Dimension | SSL 2.1

## ▾ SMT Receptacle



## Find Our Standard Products | SSL 2.1

### ∨ SSL 2.1 Inverted Thru Board

	 <p data-bbox="682 535 836 556">Packing Information</p>
Part Number	SSL21-J2E00-000001

【Note】 Design and specification are subject to change without notice.

## Specification | SSL 2.3

<b>Identifications</b>	SSL2.3 EZ-B
<b>Description</b>	Screw Base for E26/27 Bulb
<b>Current Rating / Data</b>	3A
<b>Voltage Rating</b>	500Vac/dc
<b>Material</b>	Terminal: Copper Alloy, Gold Plated, Nickel-under Plated All over Housing & Cover: Thermoplastic, UL94V-0 Rated
<b>Temperature Range</b>	-40°C ~ 105°C
<b>Contact Resistance</b>	≤ 20mΩ
<b>Insulation Resistance</b>	≥ 1000MΩ at 500VDC
<b>Durability</b>	100 cycles
<b>Breakdown Voltage</b>	2000Vac
<b>More to know</b>	UL recognized materials

## Ordering Information | SSL 2.3

### Connector Series

SSL2.3 - D - 2 - S - 00 - 0 - 00 - 001

(23) SSL 2.3 EZ-Base

### Connector (Housing) Gender

(D) No Gender

### Number of Contacts

2 contacts

e.g. (2) = 2 Contacts

### Connector Type

> For PCB Mount Type

(S) Screw Mount Type

### Wires Assembly Options

> For PCB Mount Type

(00) Applicable for PCB Mount Type

### Assembly Option

(0) Applicable for PCB Mount Type

### Wire Size

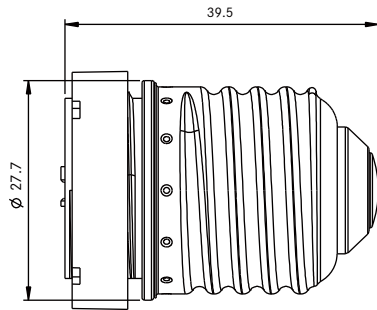
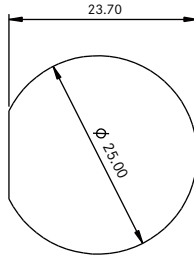
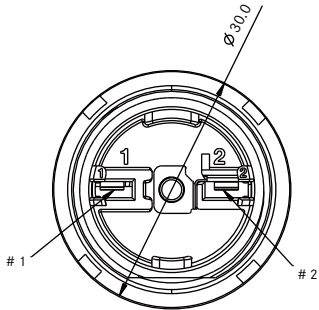
> For PCB Mount Type

(00) Applicable for PCB Mount Type

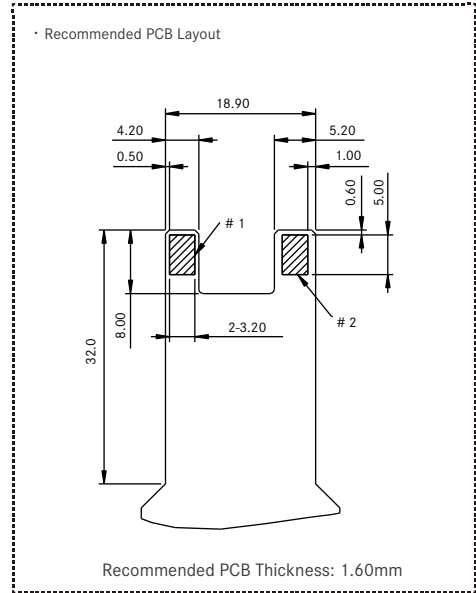
【Note】 Design and specification are subject to change without notice.

# Physical Dimension | SSL 2.3

## ▾ Screw Base



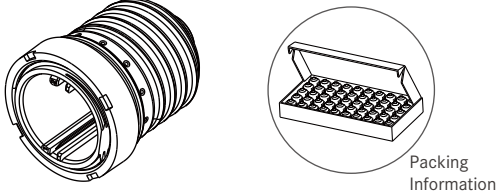
Unit: mm



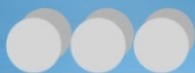
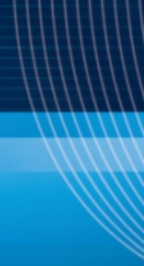
Unit: mm

## Find Our Standard Products | SSL 2.3

### SSL 2.3 EZ-B

	 <p>Packing Information</p>
Part Number	SSL23-D2S00-000001

【Note】 Design and specification are subject to change without notice.



**B.C.E. S.r.l.** - Via Regina Pacis, 54/c - I 41049 Sassuolo (MO), Italy

Tel: (+39) 0536 811616 Fax: (+39) 0536 811500 E-mail: [bce@bce.it](mailto:bce@bce.it) Web: [www.bce.it](http://www.bce.it)

