

KEL Half Pitch (1.27mm) Connectors Outline & Line-up



Half Pitch Connectors Outline

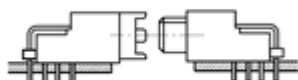
Our half pitch connectors (1.27mm pitch) are in wide use, primarily for industrial equipment. In the over 20 years since its market release variations have been added, and it is a long-run product that has been continuously adopted for a number of equipment.



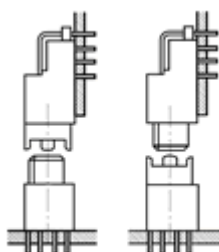
Product Line-up

Series	Product Outline	No. of contacts
8800 Series	Board to Board Connector	20, 26, 30, 32, 34, 40, 50, 52, 60, 68, 80, 100
8832E-FS Series	Board to Board Connector / Flexible Stack Height Type	20, 30, 40, 50, 60, 80, 100
8806/8807 Series	Board to Board Connector / Multi-Pin Type	120, 140, 160, 180, 200
8900 Series	Board to Board Connector (Low Profile Type)	20, 30, 40, 50, 60, 80, 100, 120
8900MS Series	Board to Board Connector (Low Profile Type) / SMT Type	20, 30, 40, 50, 60, 80, 100, 120
8911-FL Series	Board to Board Connector (Low Profile Type) / Selective Mating Height Type	20, 30, 40, 50, 60, 80, 100
8903N-FS Series	Board to Board Connector (Low Profile Type) / Flexible Stack Type	40, 50, 60, 68, 80, 100
8825E(R) Series	Board to Cable Connector / IDC for 0.635mm FC (#30 AWG) One-Touch Locking Ejector System	20, 26, 30, 32, 34, 40, 50, 60, 68, 80, 100
8822E Series	Board to Cable Connector / IDC for 1.27mm FC (#28 AWG) One-Touch Locking Ejector System	20, 26, 30, 32, 34, 36, 40, 50, 52, 60, 68, 80, 100
8822 Series	Board to Cable Connector / IDC for 1.27mm (#28 AWG)	20, 26, 30, 32, 34, 40, 50, 52, 60, 68
8925(E) Series	Board to Cable Connector (Low Profile Type) / IDC for 0.635mm FC (#30 AWG) One-Touch Locking Ejector System	20, 30, 40, 50, 60, 68, 80, 100
8840/8850/8855 Series	Board to Cable Connector / Fully EMI Shielded I/O Connector	20, 28, 34, 50, 60, 68, 80, 100

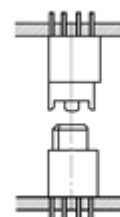
Mating Variations



[Horizontal Mating]



[Vertical Mating]



[Stacked Mating]