

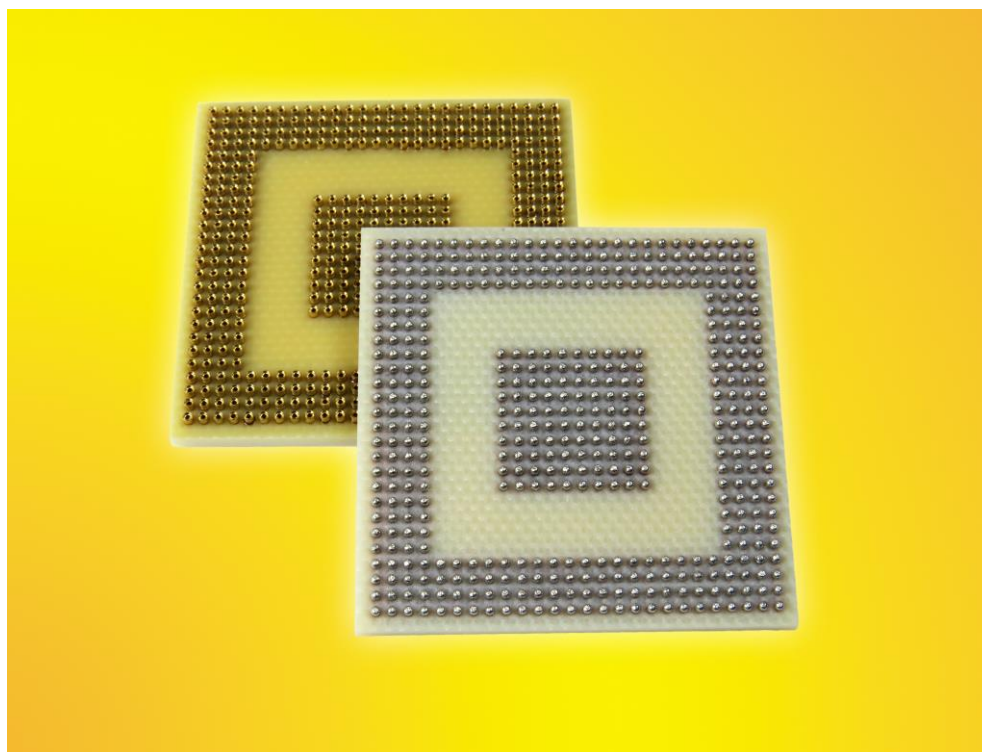


Chip Size 1.27mm Pitch Socket Adapter for BGA452

Users can socket their 452 ball 1.27mm pitch IC's with socket whose footprint same as IC footprint

EAGAN, MN - January, 2017 - Ironwood Electronics' new high performance socket adapter - SF-BGA452A-B-32F allows 1.27mm pitch, 35x35mm body, 26X26 array IC to be placed in socket and operated without compromising electrical performance.

The [Giga-snaP™ BGA socket adapter](#) pair consists of SF-BGA452A-B-32F, patented female BGA sockets with machined pins epoxy over molded into an assembly that matches the male pin LS-BGA452A-31 adapter. The RoHS compliant SF-BGA452A-B-32F BGA socket is soldered to a PCB using standard soldering methods without warping which results in reliable connection to PCB. Both BGA socket and adapter are constructed with high temperature FR-4 body assuring match with target PCB's and preventing failures that occur due to CTE mismatch. LS-BGA452A-31 BGA adapter, to which the user attaches a target 452 ball device or other compatible chip, is plugged into the female BGA socket on the board, thereby chip is interconnected and the system is ready to go.



The [BGA socket adapters](#) have the same solder ball types as the IC they are emulating. The Giga-snaP™ BGA socket adapters require half the force of conventional adapters for the 452 pin device due pin/clip interconnect design. The electrical path of the Giga-snaP™ BGA socket adapters is a high priority performance issue with the physical length from the top connection point on the male adapter to the solder ball on the female socket is 4.5 mm. This is the shortest connection length by far for machined pin sockets, therefore providing better transmission of high frequency signals. These adapters passed environmental tests (MIL-STD) and qualified for various stringent applications. The Giga-snaP™ BGA socket adapter line is available in many different pin counts/pitches and customs can be delivered in days.

(January, 2017)

B.C.E. S.r.l. - Via Regina Pacis, 54/c - I 41049 Sassuolo (MO), Italy

Tel: (+39) 0536 811616

Fax: (+39) 0536 811500

E-mail: bce@bce.it

Web: www.bce.it