

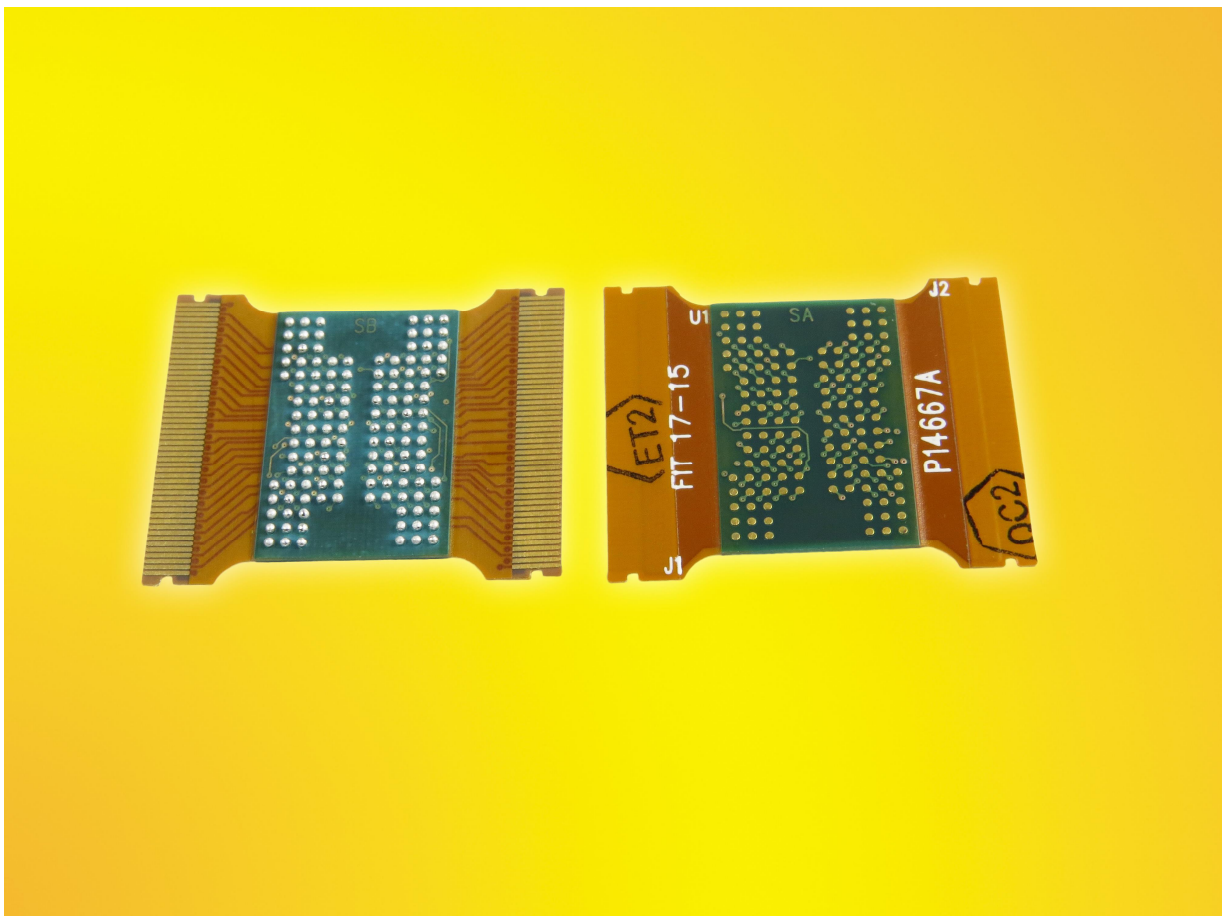


**Ironwood**  
ELECTRONICS

## Probing Adapter for NANDFLASH

***Full Speed Debugging of 1mm pitch BGA132 is made easier with PB-BGA132E-NANDFLASH-01 Probe Adapter***

EAGAN, MN - May, 2015 - Ironwood Electronics' PB-BGA132E-NANDFLASH-01 Probe Adapter which allows high-speed testing of Nand Flash while accessing the signals using testers via test pads. Ironwood Electronics is an expert in developing high-speed interfaces for processors, peripheral IC's and memory devices and is a development partner with both Keysight and Tektronix. Features of the PB-BGA132E-NANDFLASH-01 include shortest possible trace length for maximum speed, low inductance, low capacitance, blind and buried via PCB design technology. This probe adapter is designed to interface 1mm pitch Ball Grid Array packages to SMT pads on the target PCB while bringing the signals out for probing. Ironwood's PB-BGA132E-NANDFLASH-01 Probe Adapter consists of rigid flex PCB with solder balls on the bottom side. The probe adapter can be soldered to the target system board in place of BGA132, 1mm pitch, 11x17 array, 12mmX18mm body using standard BGA soldering methods. Nand flash can be soldered on the top side of probe adapter that employs a flex wing design to deliver all data, address, control, and other signals to test pads on 0.4mm centers. The flex wing test pads are interfaced to logic analyzer or other test equipment using appropriate cable connector. Alternatively, this probe adapter can be used inside a BGA socket for solderless solution.



(May, 2015)

**B.C.E. S.r.l.** - Via Regina Pacis, 54/c - I 41049 Sassuolo (MO), Italy

Tel: (+39) 0536 811616

Fax: (+39) 0536 811500

E-mail: [bce@bce.it](mailto:bce@bce.it)

Web: [www.bce.it](http://www.bce.it)