

Amphenol LTW SATA II IP67

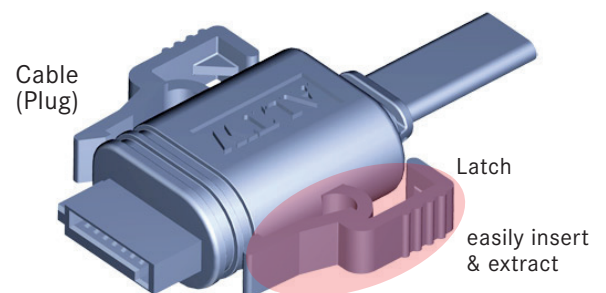
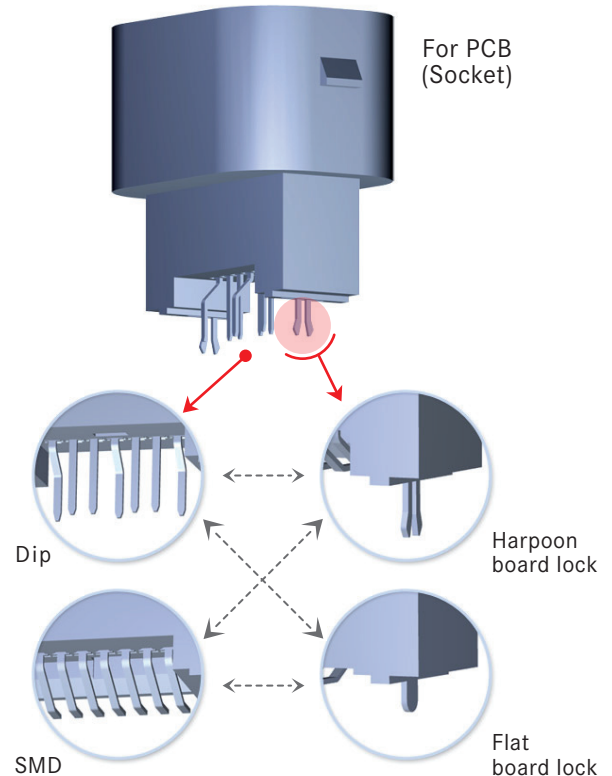
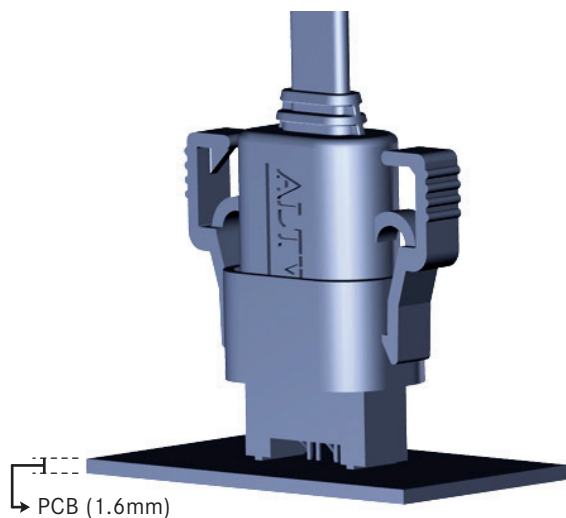
ALTW's SATA II with latch provides secure, fast and reliable IP67 connection.

It includes Cable and PCB type for SMD or DIP.

Advantages

Waterproof	SATA 2.6 / IP67
Time saving	With latch, insertion and extraction are easy and quick.

- ✓ Available contacts : 7P
- ✓ Current Capacity : 1.5A
- ✓ Over-molded Wires Size : #26
- ✓ 15V DC
- ✓ 1.6, 2.6, 3.2mm mounting board-lock available
- ✓ Black color for all connector housings and over-molding
- ✓ UL recognized materials
- ✓ Lead Free and RoHS Compliant
- ✓ PCB thickness 1.6 mm
- ✓ IEC 06529 / IP67



*SATA III and various design of latch are also available, please contact our sales for further information.

For further information, please contact :

Sales & Marketing Department **B.C.E. S.r.l.** - Via Regina Pacis, 54/c - Sassuolo (MO) - I 41049 - Italy
Tel.: 0536 811616 - Fax: 0536 811500 - Web: www.bce.it - E-mail: bce@bce.it

About Amphenol LTW

LTW Technology, established in 1993, is a professional designer and manufacturer of waterproof connectors. In April of 2010, LTW Technology was acquired by Amphenol Group and officially changed its company name to "Amphenol LTW Technology Co., Ltd.". Amphenol LTW actively devote to various outdoor and industrial applications by successfully developing high-end waterproof connectors to meet strict requirements; also has many worldwide patents and certification such as ISO 14001. ISO 9001 and NMEA 2000.... Amphenol LTW is not only a supplier of waterproof connectors but also a solution provider in diversified market segments.