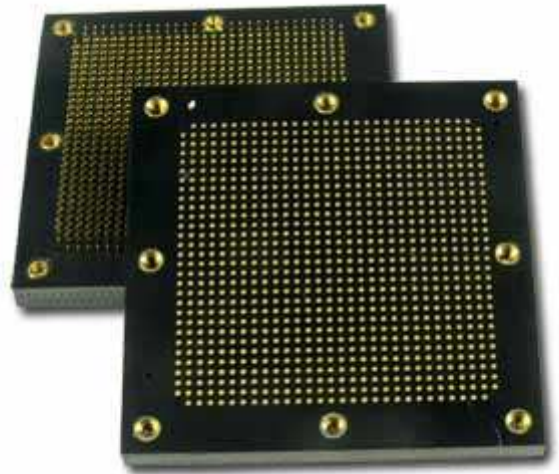


Male Pin Adapters

Pin adapters allow GHz sockets to mount on PCB where no mounting hole exist and plated thru hole exist for each contact instead of SMT pads. Ironwood's standard GHz elastomer or Spring pin sockets or other technology sockets can be mounted on male pin adapters.



Standard Parts

- [Male Pin Adapters](#)

The male pin adapter consists of standard high temperature FR4 with pressed in terminal pins and threaded inserts for mounting the socket. The top side of adapter has gold plated pads to receive socket interconnect and the bottom side has 0.006" to 0.018" diameter pin tails. These pins can be soldered to the plated thru holes in the target board. Then socket can be mounted to the threaded insert.

GHz Sockets mounted to adapter can be either inserted into PCB holes for soldering or plugged on to a Giga-snaP female SMT adapter.

