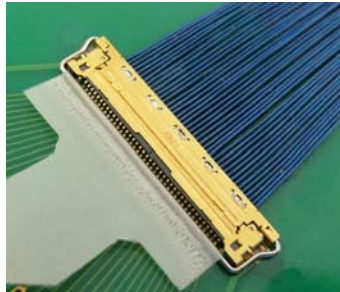


CABLINE®-VS



Overview :

For the further evolution on Flat Panel Display, such as the "Embedded DisplayPort™" application, as a leader of LED backlight Panel connector field (- share No.1(*1) in the latest technology LED Backlight Flat panel connector for Notebook PC field,) I-PEX has been proposed a new product "CABLINE®-VS"

CABLINE®-VS series are formally certified the latest VESA® standard specification, "VESA®16:9 Wide Notebook Panel Standard Version 1" as a standard connector. This new specification corresponds for LED backlight and future's mainstream of aspect ratio 16:9, and our CABLINE®-VS is employed on LED Backlight Panel as a standard connector. The background of this certification indicates our existing "High" market share in the slim type Notebook PC of LED Backlight market. Moreover, CABLINE®-VS series' excellent high speed performance can bring smooth & seamless transition to DisplayPort™ from LVDS.

Currently LED Backlight in the Notebook PC market holds more than 50% market share, and it is considered to be 100% share in the future. I-PEX continue to build up the supply chain for the growing LED Backlight market and the prospective expansion of DisplayPort™ market in the future.

(*1)Confirmed by I-PEX in Oct, 2008.

VESA®: Video Electronics Standard Association

DisplayPort™ is the newest digital video interface standard from VESA®

Features :

1. Designed for high speed transmission of 2.7Gbps or more.
2. With various simulations on a latest simulation tool, ideal impedance matching of the inside signal of a connector and GND Path has been achieved.
3. The whole connector is covered by metal shell. Furthermore, it's shortest certain GND route by the multiple points of ground contact can perform the excellent EMI characteristic.
4. Double locking structure is available, the standard built-in lock and optional pull bar locking, allow easy and certain operation.
5. Receptacle: Secure highly reliable contact structure of the W-point contact under severe environments.
6. Receptacle: Over-molding design under the connector can bring the benefit of minimum Pattern prohibition areas and the design flexibility of board wiring and VIA hole.

Electrically characteristic (for horizontal matching co-axial connector) :

1. Pitch: 0.5mm
2. Height: 1.0mm
3. Cable size:

SGC(Small Gage Coaxial Cable): AWG #40

Discrete: AWG #32

Twin Coax : AWG #40

For more information, contact us to: bce@bce.it ; or browse into our website: www.bce.it

(September, 2009)